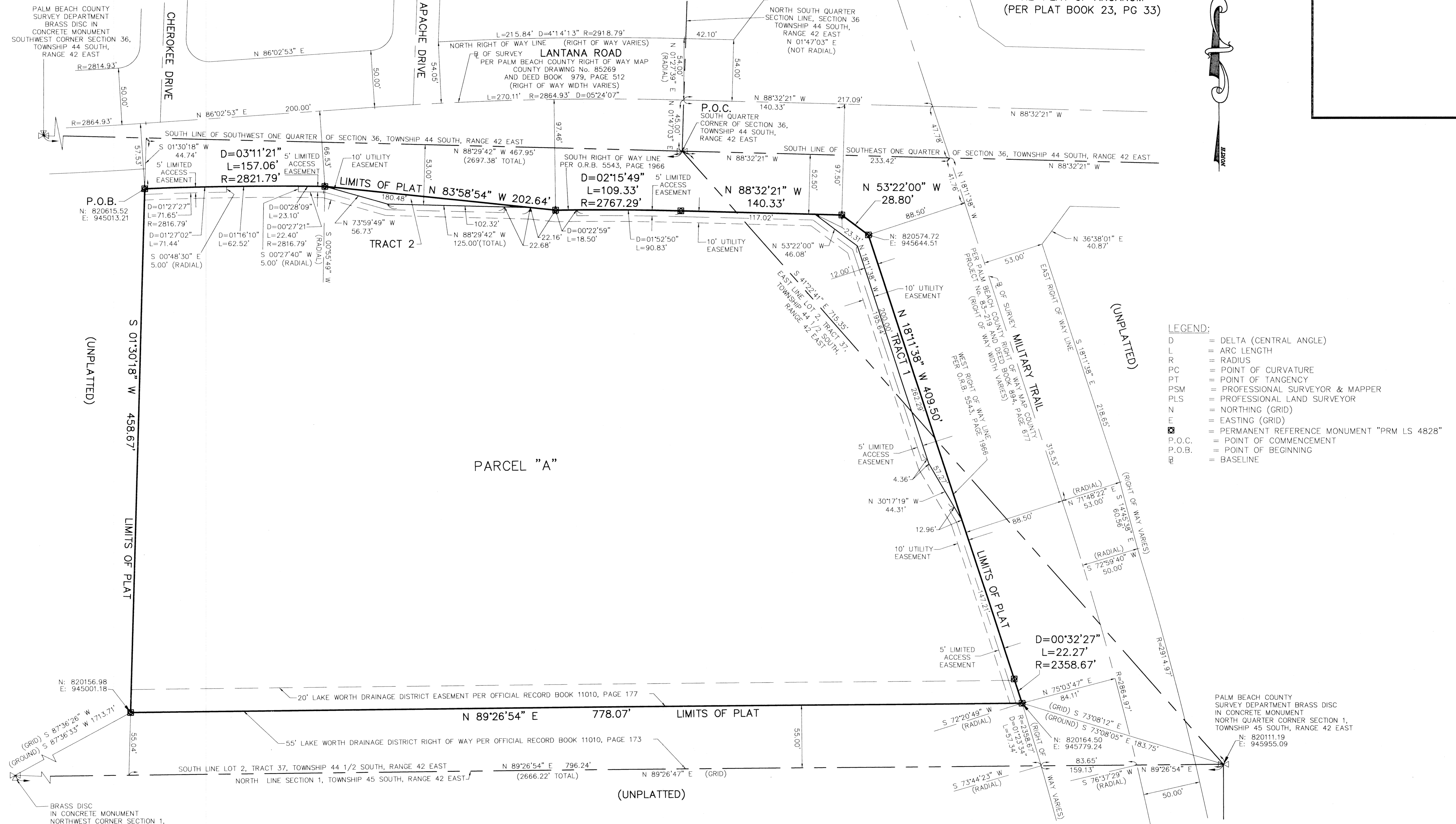


**MILITARY AND LANTANA M.U.P.D. - PLAT No. 1**  
 BEING A PORTION OF LOTS 1 AND 2, HIATUS TRACT 37,  
 TOWNSHIP 44 1/2 SOUTH, RANGE 42 EAST,  
 PALM BEACH COUNTY, FLORIDA  
 SHEET 2 OF 2  
 MARCH 1999

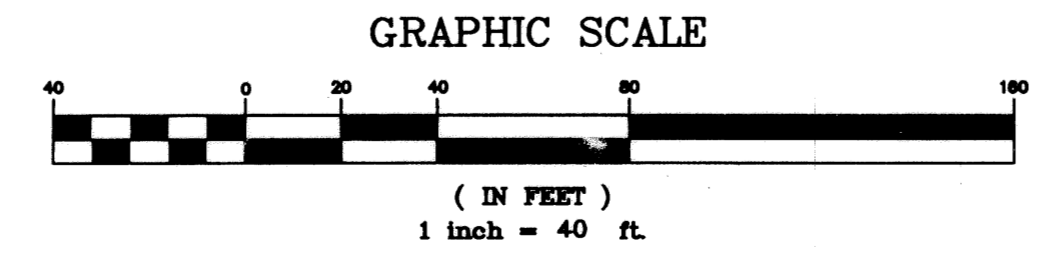
5490-000

KOKOMO TRAILER SUBDIVISION  
 (PER PLAT BOOK 25, PG 127)

RE-PLAT OF ARCANUM  
 (PER PLAT BOOK 23, PG 33)



- LEGEND:**
- D = DELTA (CENTRAL ANGLE)
  - L = ARC LENGTH
  - R = RADIUS
  - PC = POINT OF CURVATURE
  - PT = POINT OF TANGENCY
  - PSM = PROFESSIONAL SURVEYOR & MAPPER
  - PLS = PROFESSIONAL LAND SURVEYOR
  - N = NORTHING (GRID)
  - E = EASTING (GRID)
  - ☒ = PERMANENT REFERENCE MONUMENT "PRM LS 4828"
  - P.O.C. = POINT OF COMMENCEMENT
  - P.O.B. = POINT OF BEGINNING
  - B = BASELINE



SUBDIVISION Military + Lantana  
 BOOK 85 PAGE 41  
 FLOOD ZONE FLOOD MAP # 175-B  
 QUAD # 33 ZONING MOFO  
 SE 98-13 ZIP CODE 33463  
 TAZ 435  
 PUD NAME Military + Lantana MUPD

<b>MILITARY AND LANTANA M.U.P.D. - PLAT No. 1</b>	
<b>NICK MILLER, INC.</b> Surveying & Mapping Consultants	SHEET NO. <b>2 OF 2</b>
	SCALE: 1" = 40' DATE: MARCH 1999 JOB NO. 98043 FILE: PAGE2.DWG