



THIS INSTRUMENT WAS PREPARED BY:
JEFF S. HODAPP OF
CARNAHAN-PROCTOR AND ASSOCIATES, INC.
CONSULTING ENGINEERS
 SURVEYORS ENGINEERS PLANNERS
 6191 WEST ATLANTIC BLVD., MARGATE, FLORIDA 33063
 JANUARY 1998 950508J JSH

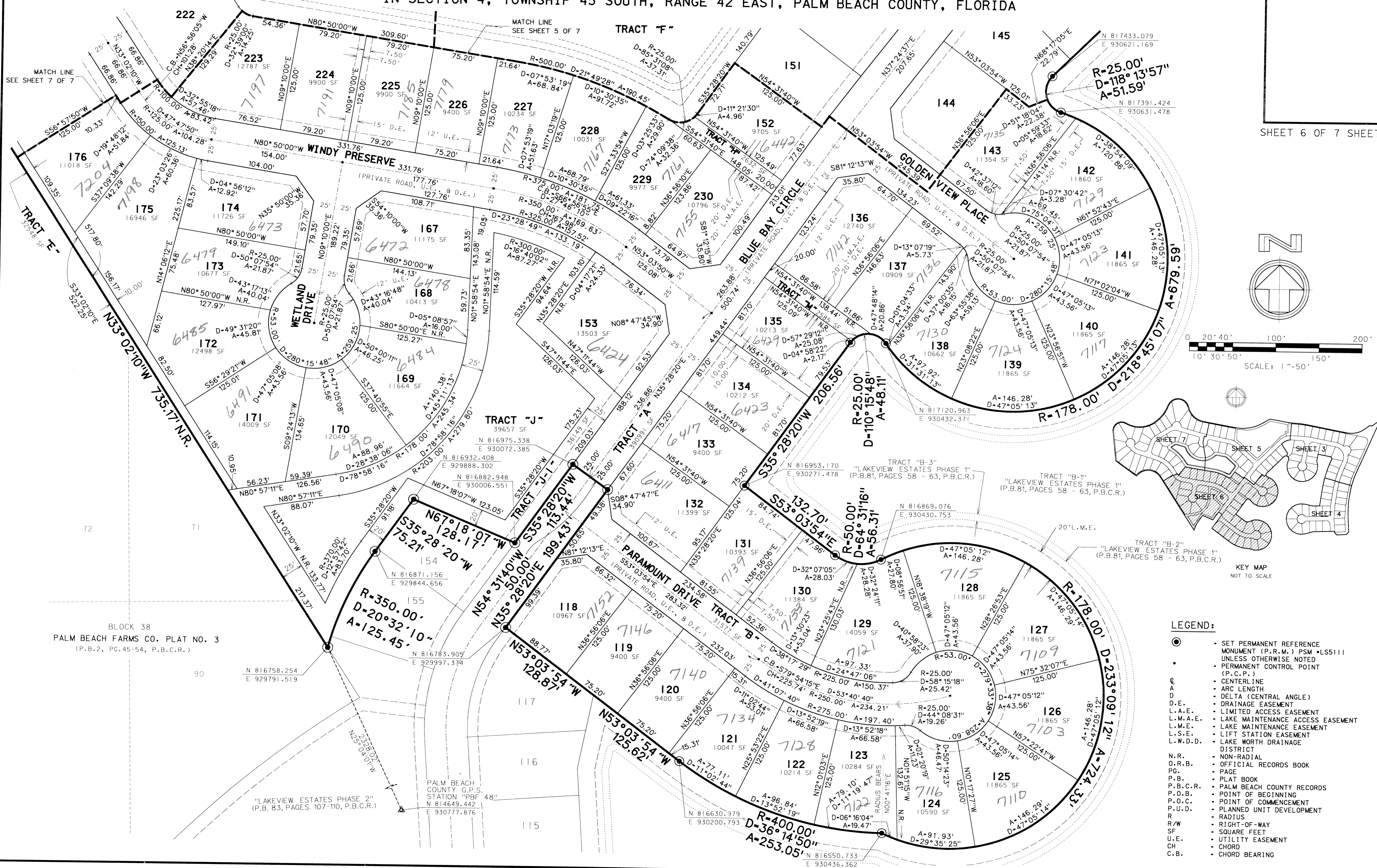
SMITH DAIRY EAST P.U.D.

0677-004

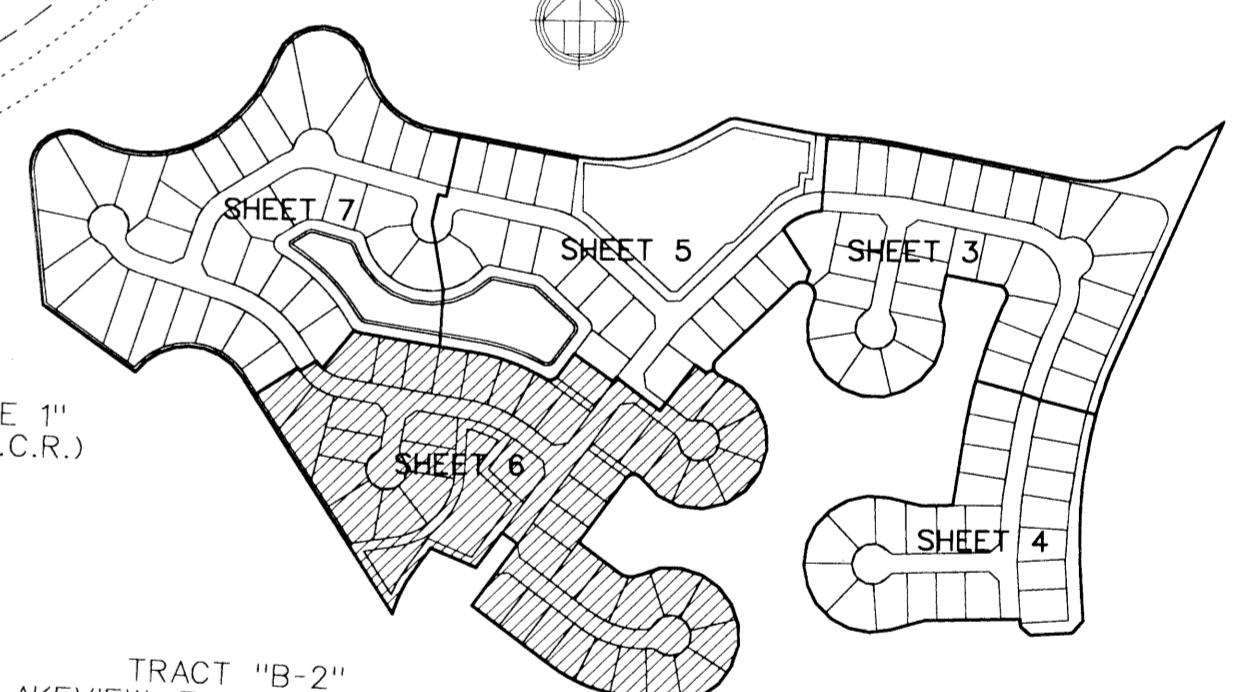
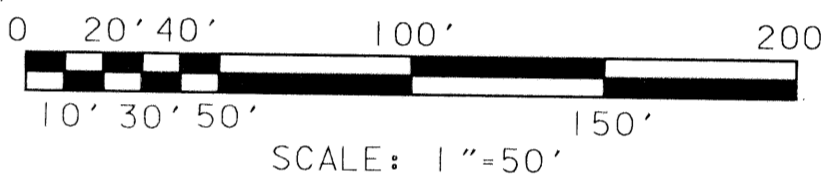
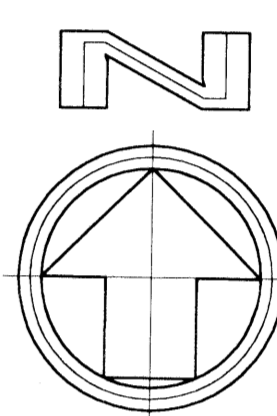
187

LAKEVIEW ESTATES PHASES 3, 4 & 5

A REPLAT OF A PORTION OF BLOCKS 38 AND 39, "PALM BEACH FARMS CO. PLAT NO. 3"
 (P.B.2, PGS.45-54, P.B.C.R.) AND THE RIGHTS-OF-WAY INCLUDED THEREIN,
 IN SECTION 4, TOWNSHIP 45 SOUTH, RANGE 42 EAST, PALM BEACH COUNTY, FLORIDA



SHEET 6 OF 7 SHEETS



- LEGEND:**
- SET PERMANENT REFERENCE MONUMENT (P.R.M.) PSM •LS5111 UNLESS OTHERWISE NOTED
 - PERMANENT CONTROL POINT (P.C.P.)
 - CENTERLINE
 - ARC LENGTH
 - DELTA (CENTRAL ANGLE)
 - DRAINAGE EASEMENT
 - LIMITED ACCESS EASEMENT
 - LAKE MAINTENANCE ACCESS EASEMENT
 - LAKE MAINTENANCE EASEMENT
 - LIFT STATION EASEMENT
 - LAKE WORTH DRAINAGE DISTRICT
 - NON-RADIAL
 - OFFICIAL RECORDS BOOK
 - PAGE
 - PLAT BOOK
 - PALM BEACH COUNTY RECORDS
 - POINT OF BEGINNING
 - POINT OF COMMENCEMENT
 - PLANNED UNIT DEVELOPMENT
 - RADIUS
 - RIGHT-OF-WAY
 - SQUARE FEET
 - UTILITY EASEMENT
 - CHORD
 - CHORD BEARING

BLOCK 38
 PALM BEACH FARMS CO. PLAT NO. 3
 (P.B.2, PG.45-54, P.B.C.R.)

PALM BEACH COUNTY G.P.S. STATION "PBF 48"
 N 814649.442
 E 930777.876

SUBDIVISION: Lakeview Estates Phases 3, 4, 5
 PAGE: 187
 FLOOD MAP# 170A
 ZONING: PD
 QUAD# 44
 SE 95-87
 TAZ 142
 PUD NAME: Smith Dairy East

FILE: G:\projects\95081\95081pp6.dgn
 DATE: 05-Feb-99 08:32