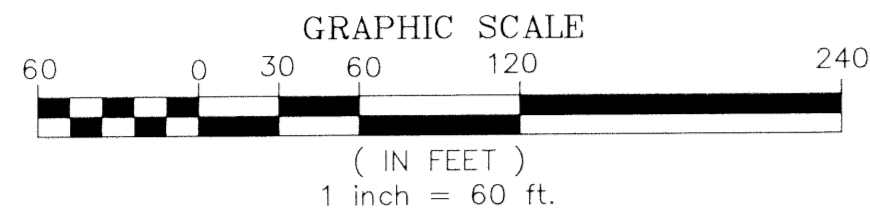


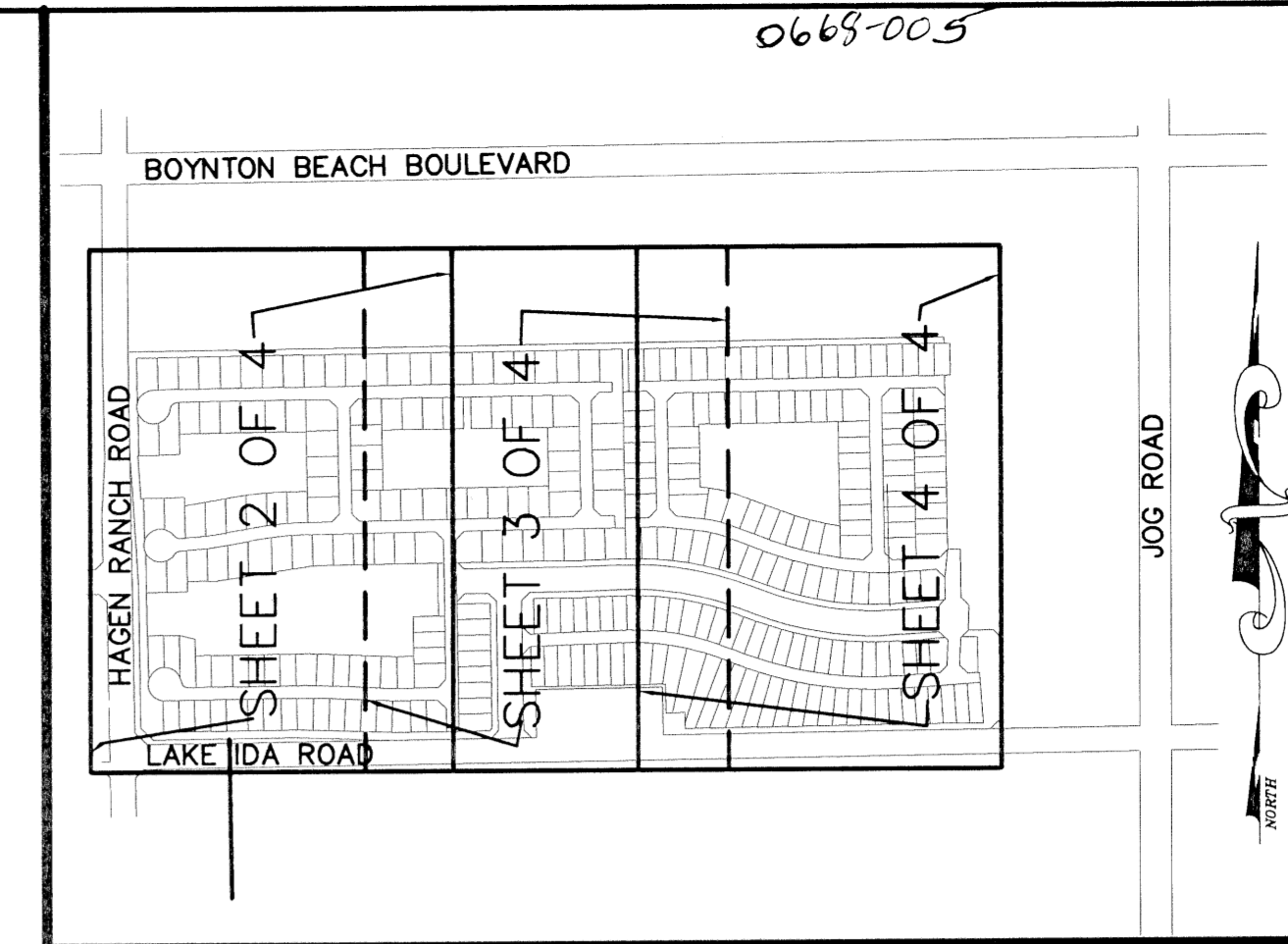
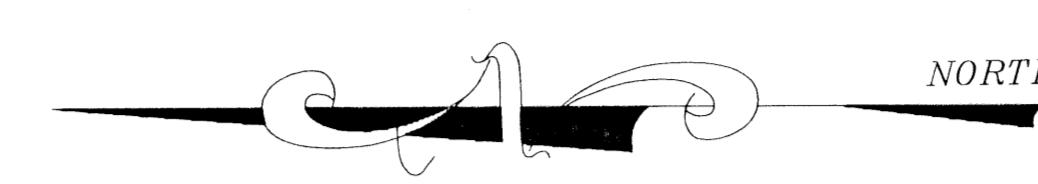
HUNTINGTON WALK PLAT NO.2

A PLANNED UNIT DEVELOPMENT

A REPLAT OF A PORTION OF TRACTS 104, 121 THROUGH 128, ALL OF TRACTS 97 THROUGH 103, BLOCK 9 AND THAT 15.00 FOOT WIDE RIGHT-OF-WAY LYING ADJACENT TO SAID TRACTS 97 THROUGH 104 AND THAT 15.00 FOOT WIDE RIGHT-OF-WAY LYING ADJACENT TO SAID TRACTS 97 AND 128, "PALM BEACH FARMS COMPANY PLAT NO.1", ACCORDING TO THE PLAT THEREOF, AS RECORDED IN PLAT BOOK 2, PAGES 26 THROUGH 28 AND TRACT "K" AND A PORTION OF TRACTS "B", "D" AND "U", "HUNTINGTON WALK PLAT NO. 1, A P.U.D." ACCORDING TO THE PLAT THEREOF, AS RECORDED IN PLAT BOOK 83, PAGES 44 THROUGH 50 ALL OF THE PUBLIC RECORDS OF PALM BEACH COUNTY, FLORIDA, LYING IN SECTIONS 9 AND 10, TOWNSHIP 46 SOUTH, RANGE 42 EAST, PALM BEACH COUNTY, FLORIDA



THIS INSTRUMENT PREPARED BY
DAVID P. LINDLEY
OF
CAULFIELD and WHEELER, INC.
SURVEYORS - ENGINEERS - PLANNERS
7301-A WEST PALMETTO PARK ROAD, SUITE 100A
BOCA RATON, FLORIDA 33433 - (561)392-1991
OCTOBER - 1998



177

STATE OF FLORIDA
COUNTY OF PALM BEACH
THIS PLAT WAS FILED FOR
RECORD AT _____ M.
THIS _____ DAY OF _____
A.D. 1999 AND DULY RECORDED
IN PLAT BOOK _____ ON
PAGES _____ AND _____

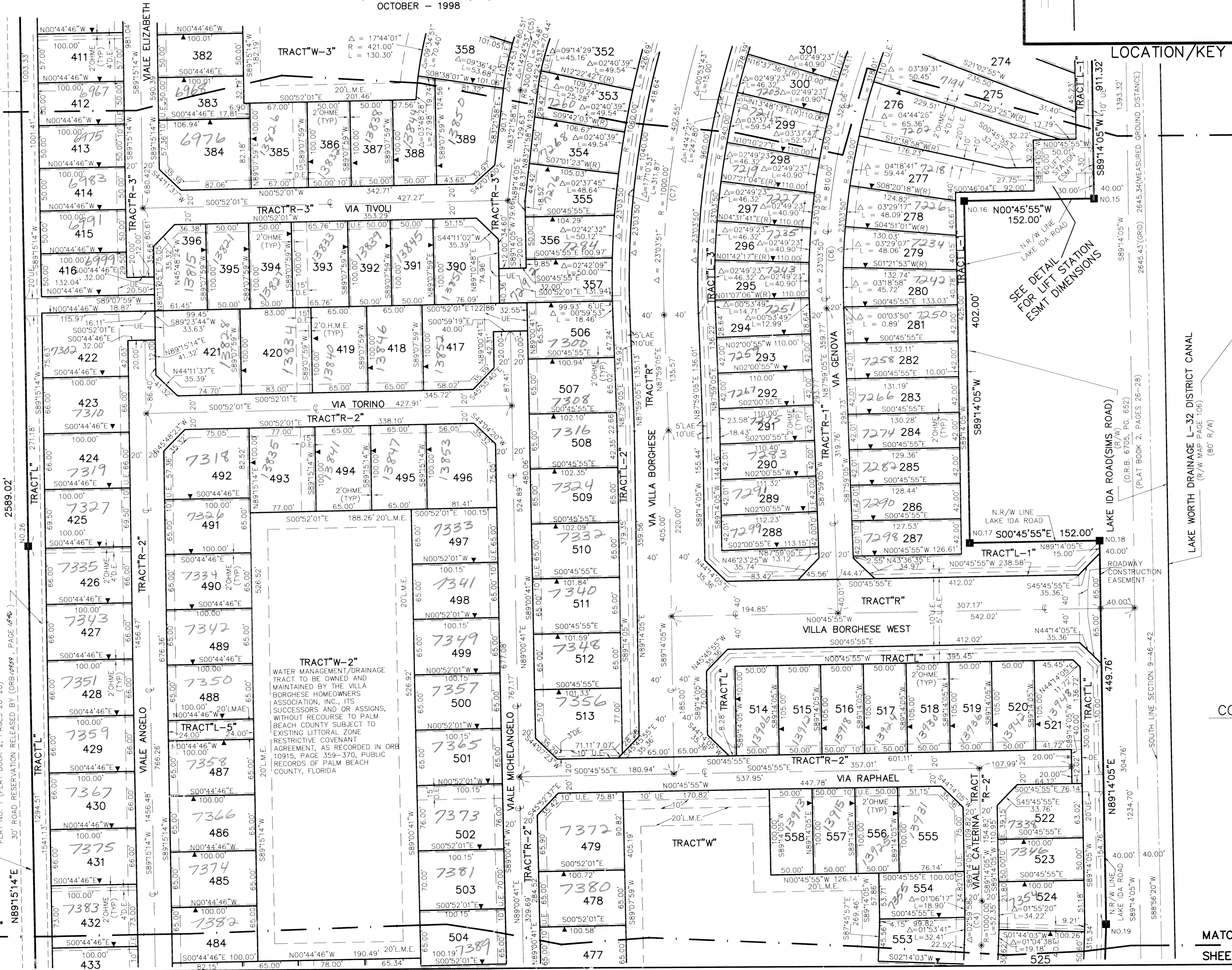
DOROTHY H. WILKEN
CLERK CIRCUIT COURT

BY: _____
DEPUTY CLERK

SHEET 4 OF 4
MATCH LINE "B"

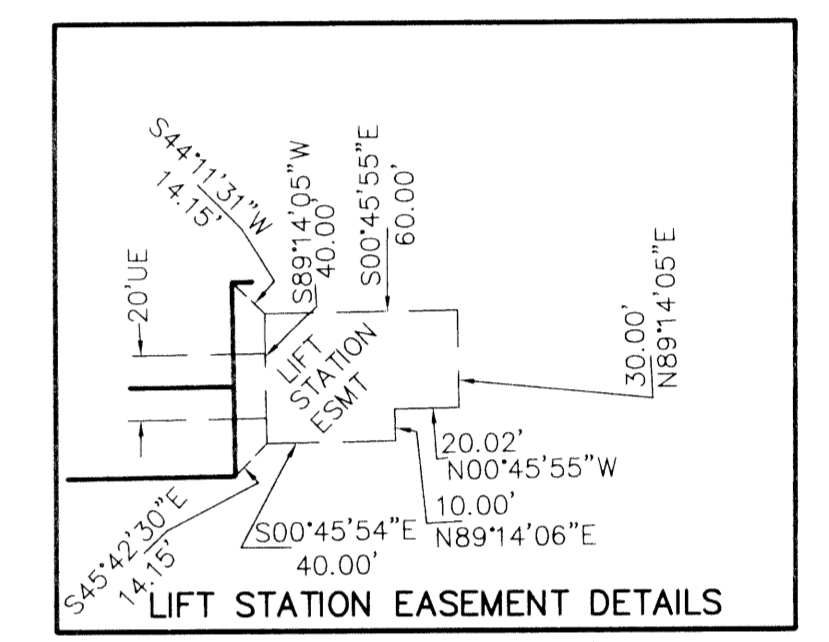
BLOCK 9,
PALM BEACH FARMS COMPANY PLAT NO. 1
(PLAT BOOK 2, PAGES 26-28)

MATCH LINE "A"
SHEET 2 OF 4



LOCATION/KEY MAP N.T.S. **SHEET 3 OF 4**

SHEET 4 OF 4
MATCH LINE "B"



PRM NO.	NORTHING	EASTING
NO. 1	778330.502	932509.291
NO. 2	778330.745	932527.880
NO. 3	778330.750	932510.182
NO. 4	778330.510	932510.723
NO. 5	777675.241	932518.711
NO. 6	777675.816	932558.707
NO. 7	777517.938	932560.978
NO. 8	777493.281	932586.339
NO. 9	777413.241	932584.071
NO. 10	777414.318	932662.435
NO. 11	777389.660	932687.781
NO. 12	777140.676	932691.202
NO. 13	777100.128	932651.753
NO. 14	777098.414	932527.021
NO. 15	777086.241	931615.754
NO. 16	777238.232	931613.724
NO. 17	777232.862	931211.748
NO. 18	777080.871	931213.778
NO. 19	777074.864	930764.045
NO. 20	777084.656	930448.848
NO. 21	777078.643	929988.855
NO. 22	777118.086	929958.273
NO. 23	777568.147	929951.460
NO. 24	778017.842	929924.652
NO. 25	778316.786	929920.128
NO. 26	778333.644	931214.566
NO. 27	778350.501	932509.004

NOTES COORDINATES, BEARINGS AND DISTANCES

COORDINATES SHOWN ARE GRID
DATUM = NAD 83 1990 ADJUSTMENT
ZONE = FLORIDA EAST
LINEAR UNIT = US SURVEY FEET
COORDINATE SYSTEM 1983 STATE PLANE
TRANSVERSE MERCATOR PROJECTION
ALL DISTANCES ARE GROUND
SCALE FACTOR = 1.000290
GROUND DISTANCE X SCALE FACTOR = GRID DISTANCE
BEARINGS AS SHOWN HEREON ARE GRID DATUM, NAD 83 1990
ADJUSTMENT, FLORIDA EAST ZONE.

CURVE NO.	CHORD BEARING	CHORD DISTANCE
(C1)	N83°59'42"E	167.75'
(C2)	N84°13'34"E	166.88'
(C3)	S89°15'56"E	52.35'
(C4)	S89°15'56"E	52.35'
(C5)	S76°09'32"E	75.28'
(C6)	S80°29'00"E	323.86'
(C7)	S80°28'59"E	399.83'
(C8)	S81°27'41"E	433.24'
(C9)	S81°27'41"E	515.53'
(C10)	S81°27'41"E	433.22'

MATCH LINE "A"
SHEET 2 OF 4

Huntington Walk
Plat 177
FLOOD MAP # 8000A
CLAD # S1+36
ZONING PUD
SE 95-54
TAZ 965
FUD NAME Huntington Walk