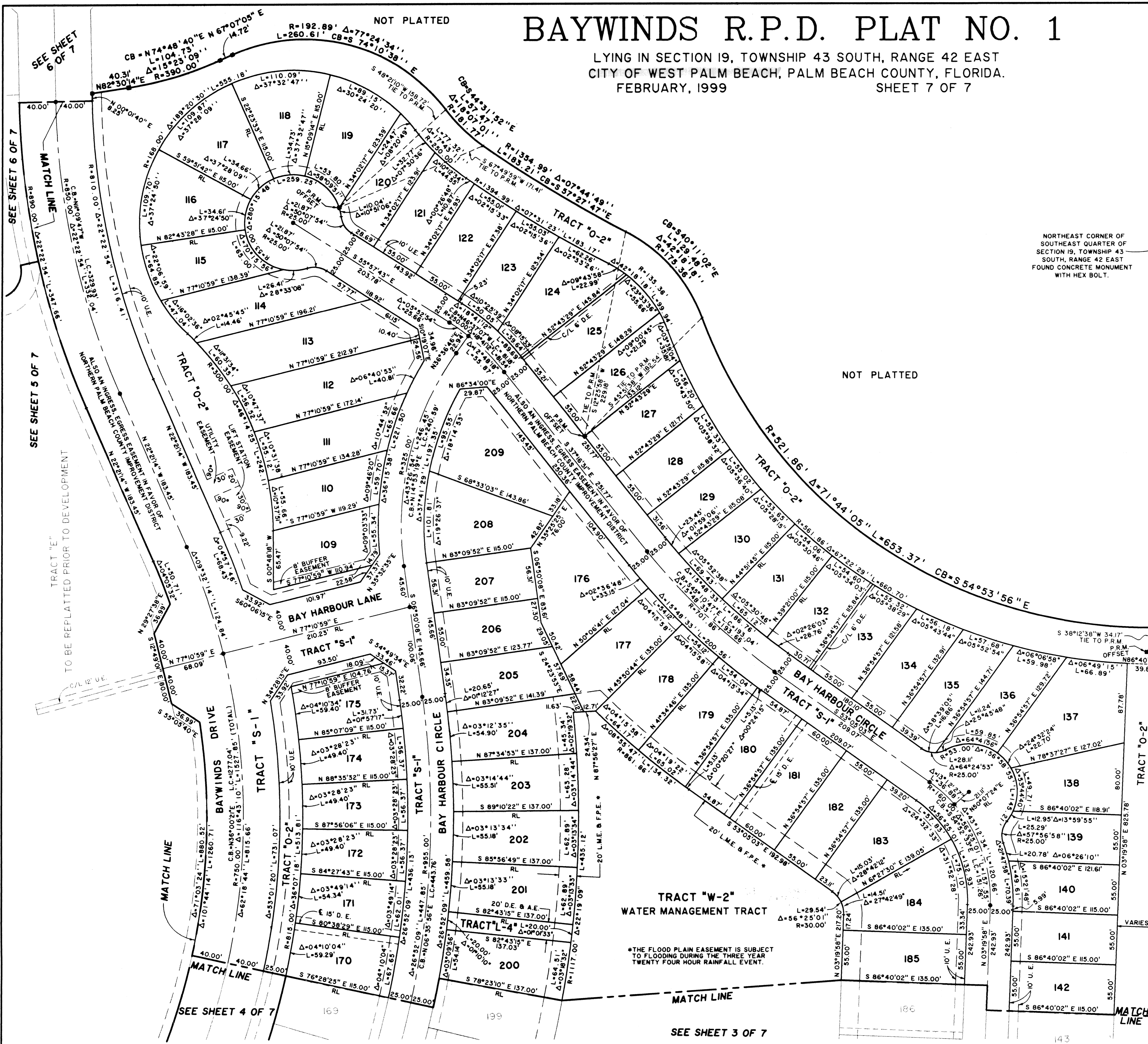
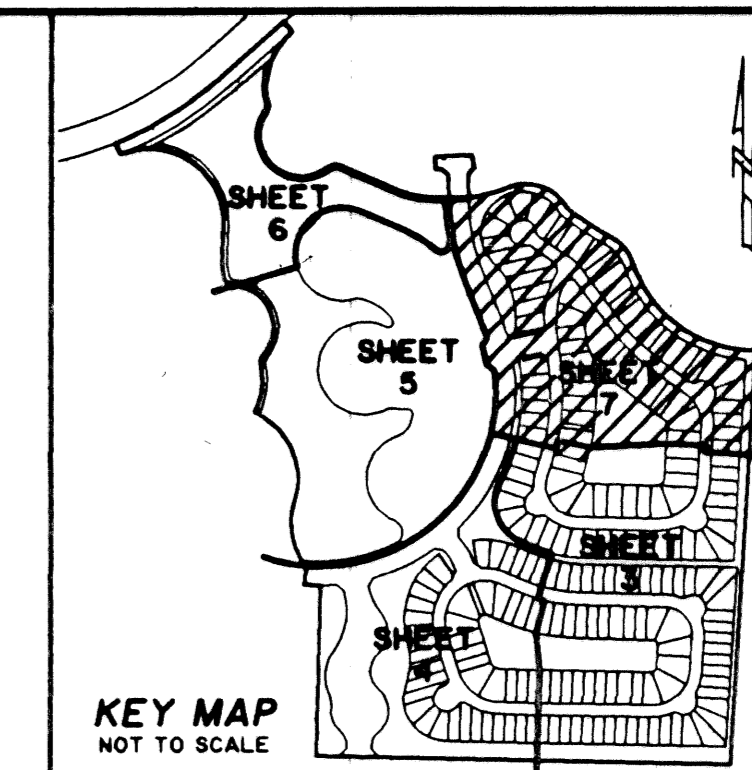


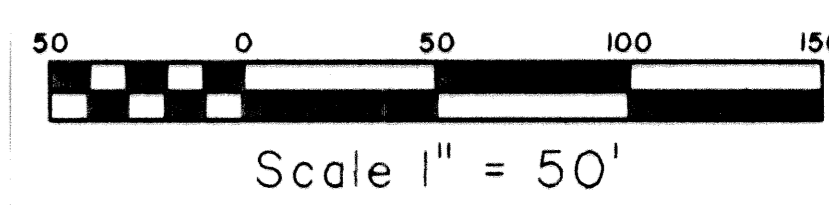
# BAYWINDS R.P.D. PLAT NO. 1

LYING IN SECTION 19, TOWNSHIP 43 SOUTH, RANGE 42 EAST  
CITY OF WEST PALM BEACH, PALM BEACH COUNTY, FLORIDA.  
FEBRUARY, 1999  
SHEET 7 OF 7

# 143



NORTHEAST CORNER OF  
SOUTHEAST QUARTER OF  
SECTION 19, TOWNSHIP 43  
SOUTH, RANGE 42 EAST  
FOUND CONCRETE MONUMENT  
WITH HEX BOLT.



OAKTON LAKES R.P.D.  
P.B. 80, PG.33

TRACT "W-2"  
WATER MANAGEMENT TRACT  
\*THE FLOOD PLAIN EASEMENT IS SUBJECT  
TO FLOODING DURING THE THREE YEAR  
TWENTY FOUR HOUR RAINFALL EVENT.

Landmark Surveying & Mapping Inc.  
1850 Forest Hill Boulevard  
Ph. (561) 433-5405 Suite 100 W.P.B. Florida

**BAYWINDS R.P.D. PLAT NO. 1**

2399PLIE

TAZ 209