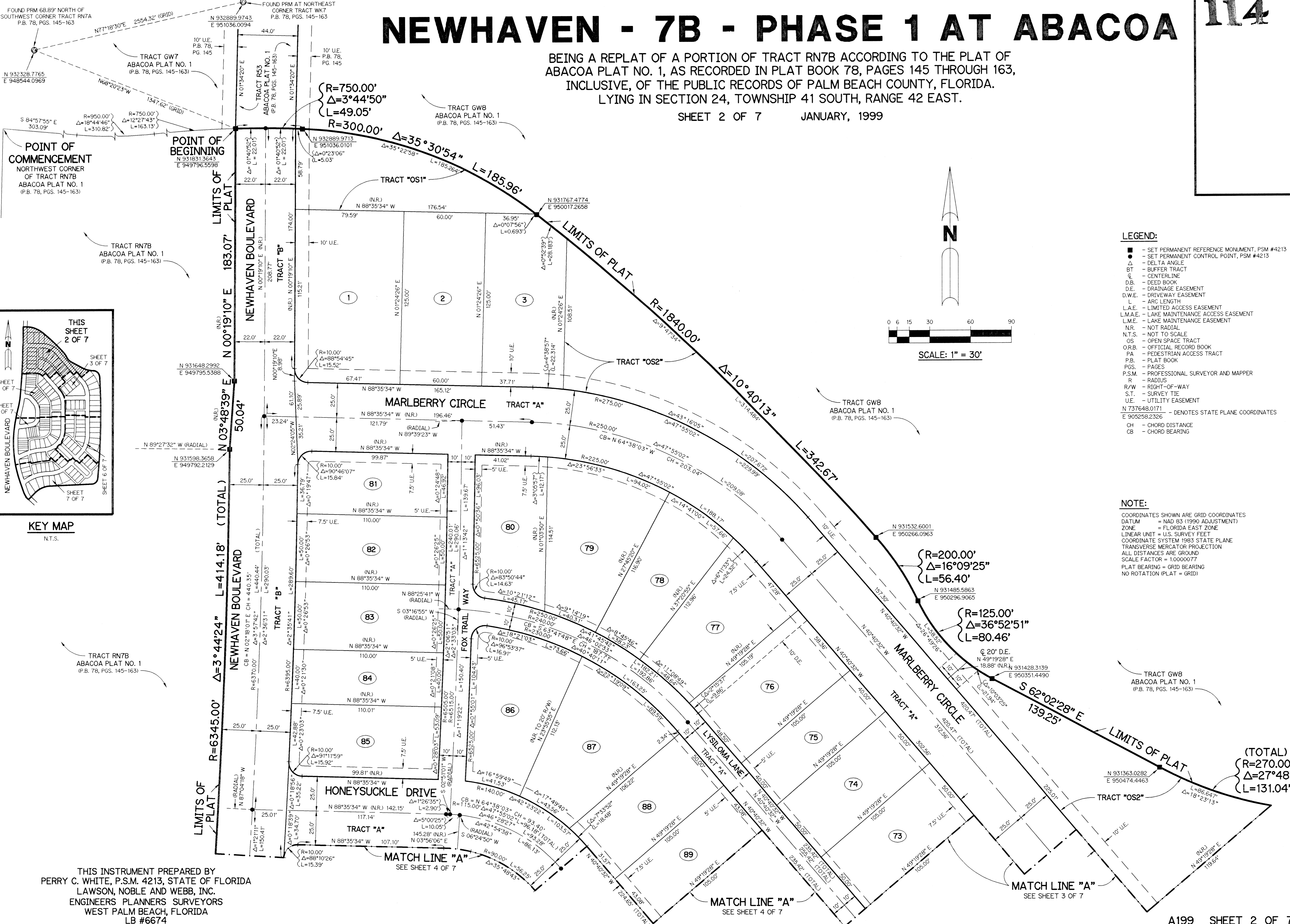


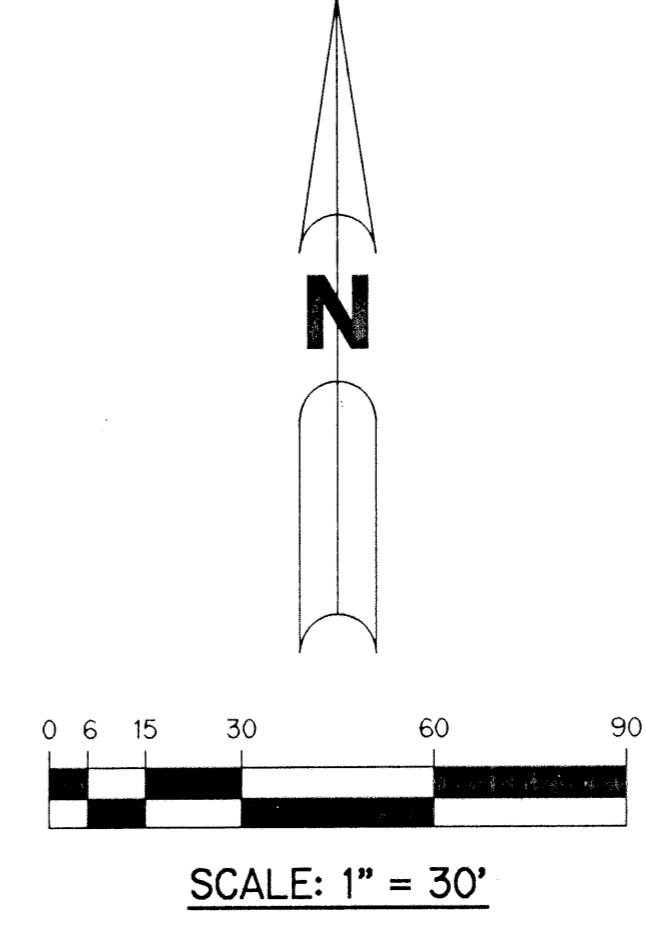
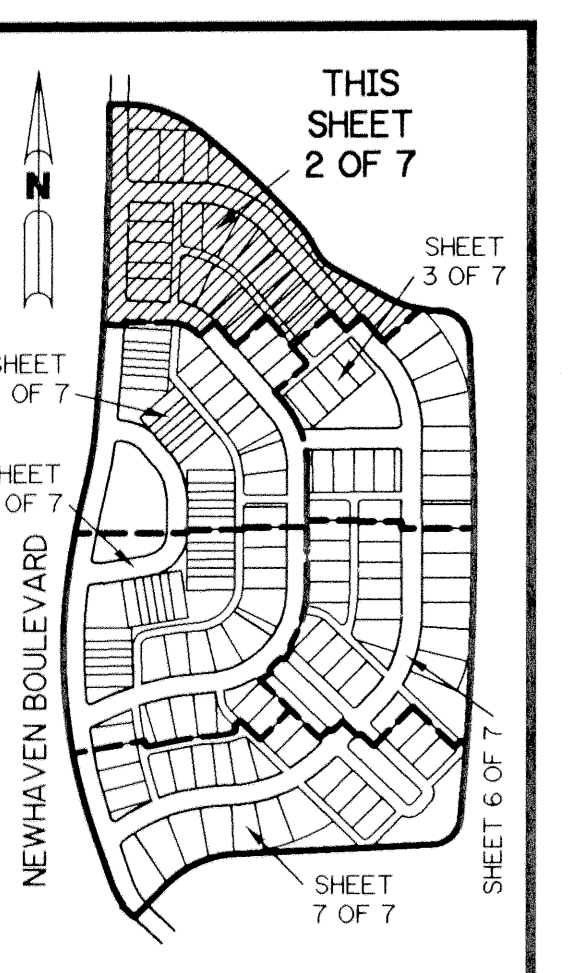
NEWHAVEN - 7B - PHASE 1 AT ABACOA

BEING A REPLAT OF A PORTION OF TRACT RN7B ACCORDING TO THE PLAT OF ABACOA PLAT NO. 1, AS RECORDED IN PLAT BOOK 78, PAGES 145 THROUGH 163, INCLUSIVE, OF THE PUBLIC RECORDS OF PALM BEACH COUNTY, FLORIDA. LYING IN SECTION 24, TOWNSHIP 41 SOUTH, RANGE 42 EAST.

SHEET 2 OF 7 JANUARY, 1999



POINT OF COMMENCEMENT
NORTHWEST CORNER
OF TRACT RN7B
ABACOA PLAT NO. 1
(P.B. 78, PGS. 145-163)



- LEGEND:**
- - SET PERMANENT REFERENCE MONUMENT, PSM #4213
 - - SET PERMANENT CONTROL POINT, PSM #4213
 - Δ - DELTA ANGLE
 - BT - BUFFER TRACT
 - CL - CENTERLINE
 - D.B. - DEED BOOK
 - D.E. - DRAINAGE EASEMENT
 - D.W.E. - DRIVEWAY EASEMENT
 - L - ARC LENGTH
 - L.A.E. - LIMITED ACCESS EASEMENT
 - L.M.E. - LAKE MAINTENANCE ACCESS EASEMENT
 - L.M.E. - LAKE MAINTENANCE EASEMENT
 - NR. - NOT RADIAL
 - N.T.S. - NOT TO SCALE
 - OS - OPEN SPACE TRACT
 - O.R.B. - OFFICIAL RECORD BOOK
 - PA - PEDESTRIAN ACCESS TRACT
 - P.B. - PLAT BOOK
 - PGS. - PAGES
 - P.S.M. - PROFESSIONAL SURVEYOR AND MAPPER
 - R - RADIUS
 - R/W - RIGHT-OF-WAY
 - S.T. - SURVEY TIE
 - U.E. - UTILITY EASEMENT
 - N 737648.0171
E 905258.2326 - DENOTES STATE PLANE COORDINATES
 - CH - CHORD DISTANCE
 - CB - CHORD BEARING

NOTE:

COORDINATES SHOWN ARE GRID COORDINATES
 DATUM = NAD 83 (1990 ADJUSTMENT)
 ZONE = FLORIDA EAST ZONE
 LINEAR UNIT = U.S. SURVEY FEET
 COORDINATE SYSTEM 1983 STATE PLANE
 TRANSVERSE MERCATOR PROJECTION
 ALL DISTANCES ARE GROUND
 SCALE FACTOR = 1.0000077
 PLAT BEARING = GRID BEARING
 NO ROTATION (PLAT = GRID)

THIS INSTRUMENT PREPARED BY
 PERRY C. WHITE, P.S.M. 4213, STATE OF FLORIDA
 LAWSON, NOBLE AND WEBB, INC.
 ENGINEERS PLANNERS SURVEYORS
 WEST PALM BEACH, FLORIDA
 LB #6674