

POLO OAKS - REPLAT OF LOTS 85 AND 86

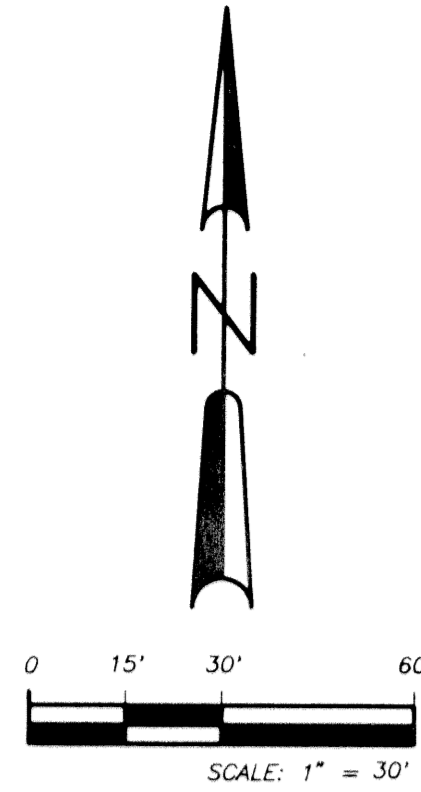
BEING A REPLAT OF A PORTION OF THE POLO OAKS
PART OF THE POLO CLUB P.U.D., (P.B. 71, PGS. 117 - 123)
LYING IN SECTION 26, TOWNSHIP 46 SOUTH, RANGE 42 EAST
PALM BEACH COUNTY, FLORIDA.

MAY 1998

SHEET 2 OF 2

0436-054

39



STATE OF FLORIDA
COUNTY OF PALM BEACH

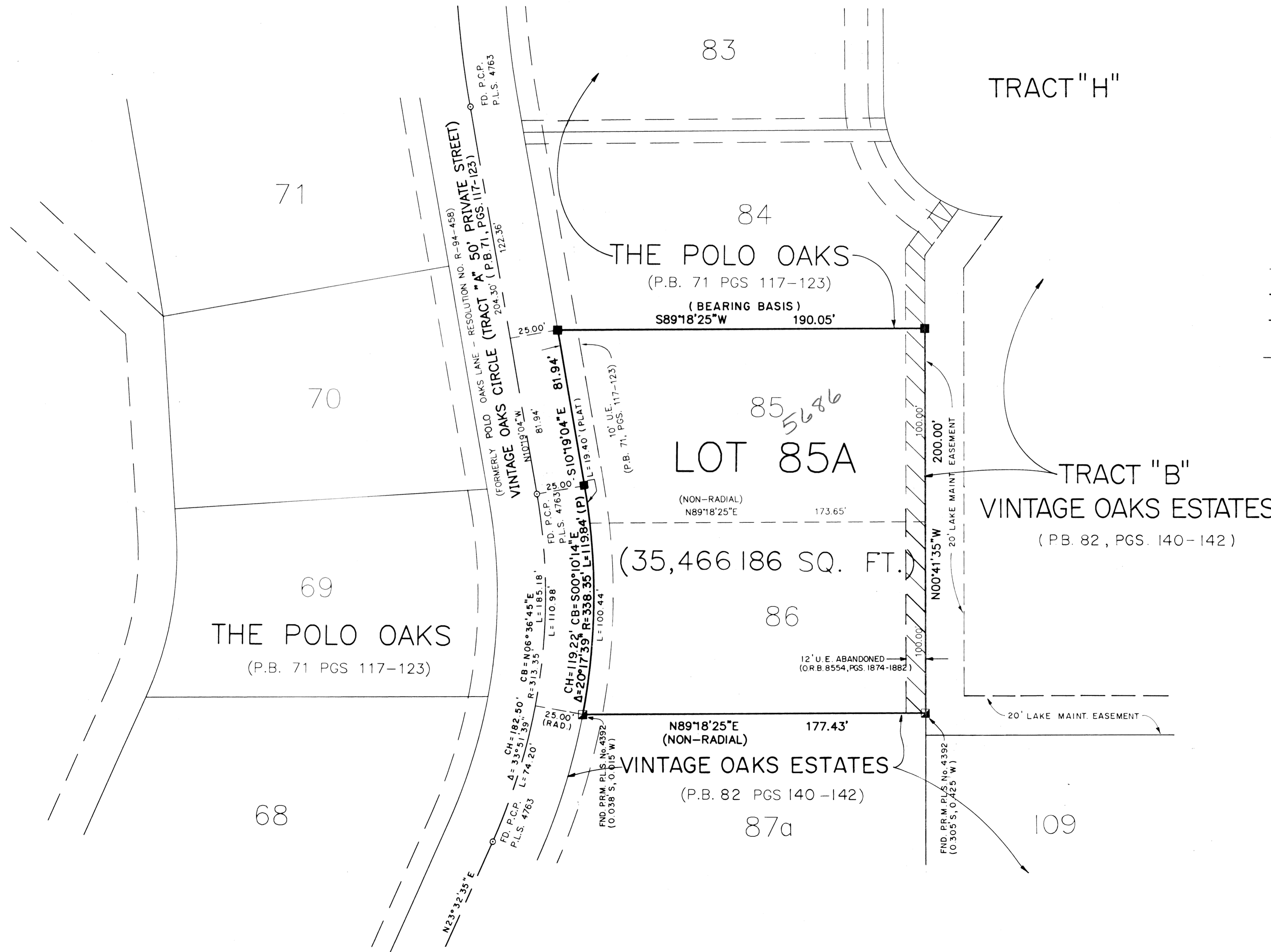
This plat was filed for
record at _____, this _____
day of _____, 1998,
and duly recorded in
Plat Book No. _____ on
Pages _____ thru _____.

DOROTHY H. WILKIN
Clerk Circuit Court

By: _____

ABBREVIATION LEGEND

C/CALC	CALCULATED DIMENSION
D.E.	DRAINAGE EASEMENT
DISC	BRASS DISC
FD/FND	FOUND
L.B.	LICENSED BUSINESS
L.S.	LAND SURVEYOR
N.R.	NON-RADIAL
O.R.B.	OFFICIAL RECORD BOOK
P/PLAT	PREVIOUSLY PLATTED
P.B.	PLAT BOOK
P.C.P.	PERMANENT CONTROL POINT
P.L.S.	PROFESSIONAL LAND SURVEYOR
P.O.B.	POINT OF BEGINNING
P.O.C.	POINT OF COMMENCEMENT
P.R.M.	PERMANENT REFERENCE MONUMENT
PC	POINT OF CURVATURE
PK	PK BRAND NAIL
PT	POINT OF TANGENCY
R/REC	RECORD DATA
R/W	RIGHT-OF-WAY
REF.	REFERENCE
RGE	RANGE
SEC.	SECTION
TWP.	TOWNSHIP
TYP.	TYPICAL
U.E.	UTILITY EASEMENT
N #	STATE PLANE NORTHING
E #	STATE PLANE EASTING
CH	CHORD LENGTH
CB	CHORD BEARING
○	DENOTES PERMANENT CONTROL POINT FOUND (P.C.P.) P.L.S. 4763 UNLESS OTHERWISE NOTED
⊠	DENOTES PERMANENT REFERENCE MONUMENT FOUND P.L.S. 4392 UNLESS OTHERWISE NOTED
■	DENOTES PERMANENT REFERENCE MONUMENT SET P.L.S. 4544 - L.B. 4574 UNLESS OTHERWISE NOTED
●	DENOTES SET 3/4" PIPE & CAP "PETSCHÉ" UNLESS OTHERWISE NOTED.



Subdivision Polo Oaks 101585786
Book 84
Page 39
Flood Map # 22016
Quad # 37
Zoning PUD
SE
TAZ 982
PUB NAME Polo Club

REV. REVISE PER P.B. COUNTY COMMENTS 9-3-98
REV. REVISE PER P.B. COUNTY COMMENTS 6-30-98

PETSCHÉ & ASSOCIATES, INC.
Professional Engineers - Land Surveyors - Development Consultants - Testing Services
2581 Metrocentre Boulevard, Suite 6, West Palm Beach, Florida 33407 (561) 640-3800
1600 Redbud Boulevard, Suite 402, McKinney, Texas 75069 (972) 562-9606

POLO OAKS
REPLAT OF LOTS 85 AND 86
SECTION 26, TOWNSHIP 46S., RANGE 42E.
PALM BEACH COUNTY, FLORIDA

Drawn by: R. HAGLER	Date: MAY 1998	SCALE: 1" = 30'	JOB NUMBER: 96002PL.DWG 93-061	SHEET OF 2 OF 2
Designed by:	Checked by: R. HAGLER			