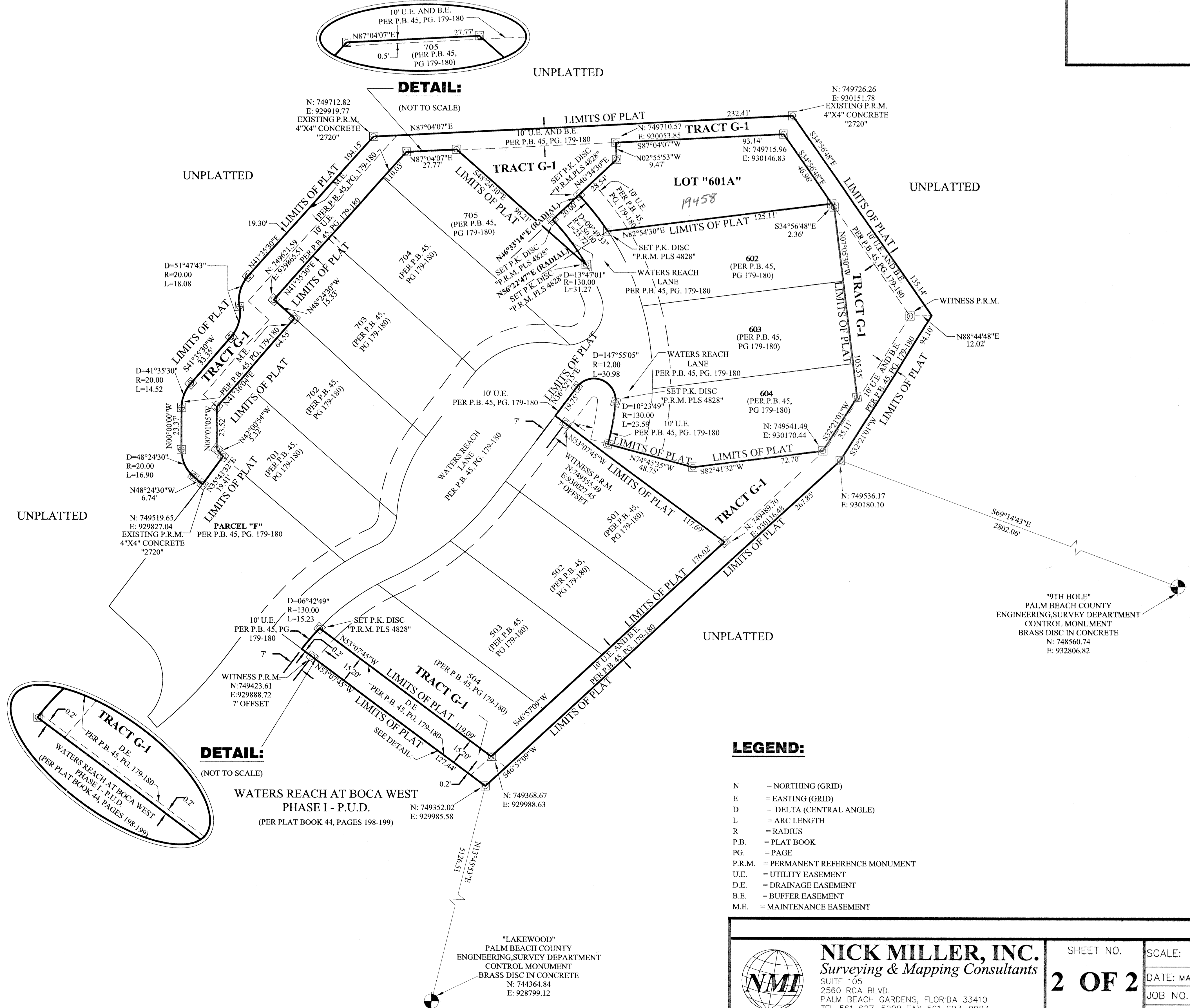


0214-029

# WATERS REACH AT BOCA WEST PHASE II - P.U.D. - REPLAT No.1

BEING A REPLAT OF LOT 601 AND PARCEL 'G' OF WATERS REACH AT BOCA WEST- PHASE II - P.U.D., AS RECORDED IN PLAT BOOK 45, PAGES 179 - 180 OF THE PUBLIC RECORDS OF PALM BEACH COUNTY, FLORIDA, IN SECTION 9, TOWNSHIP 47 SOUTH, RANGE 42 EAST PALM BEACH COUNTY, FLORIDA.

MARCH 1998  
SHEET 2 OF 2

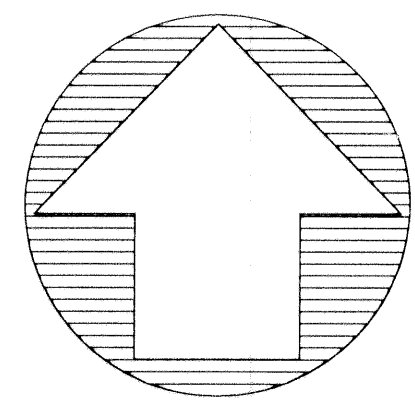


### DETAIL:

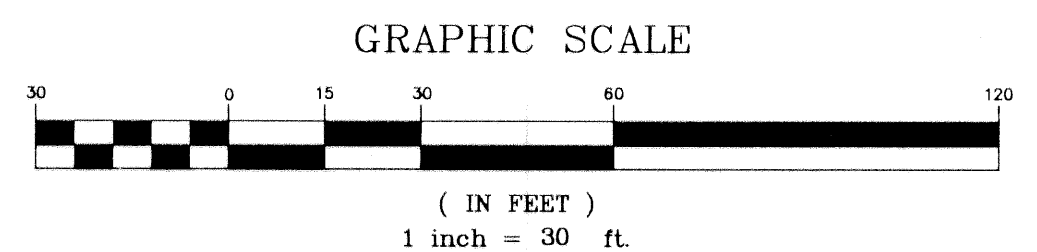
(NOT TO SCALE)

### LEGEND:

- N = NORTHING (GRID)
- E = EASTING (GRID)
- D = DELTA (CENTRAL ANGLE)
- L = ARC LENGTH
- R = RADIUS
- P.B. = PLAT BOOK
- PG. = PAGE
- P.R.M. = PERMANENT REFERENCE MONUMENT
- U.E. = UTILITY EASEMENT
- D.E. = DRAINAGE EASEMENT
- B.E. = BUFFER EASEMENT
- M.E. = MAINTENANCE EASEMENT



**NORTH**



SUBDIVISION Waters Reach at Boca West  
 BOOK 84  
 FLOOD ZONE FLOOD MAP #2806  
 QUAD # 53  
 SE  
 TAZ 607  
 FUD NAME Waters Reach at Boca West

	<b>NICK MILLER, INC.</b>		SHEET NO.
	Surveying & Mapping Consultants		<b>2 OF 2</b>
	SUITE 105 2560 RCA BLVD. PALM BEACH GARDENS, FLORIDA 33410		SCALE: 1"=30'
	TEL. 561 627-5200 FAX 561 627-0983 D.B.P.R. LICENSED BUSINESS No. 4318		DATE: MARCH 1998
			JOB NO. 98003
			FILE: 98003-1.dwg

"LAKEWOOD"  
PALM BEACH COUNTY  
ENGINEERING SURVEY DEPARTMENT  
CONTROL MONUMENT  
BRASS DISC IN CONCRETE  
N: 744364.84  
E: 928799.12

"9TH HOLE"  
PALM BEACH COUNTY  
ENGINEERING SURVEY DEPARTMENT  
CONTROL MONUMENT  
BRASS DISC IN CONCRETE  
N: 748560.74  
E: 932806.82