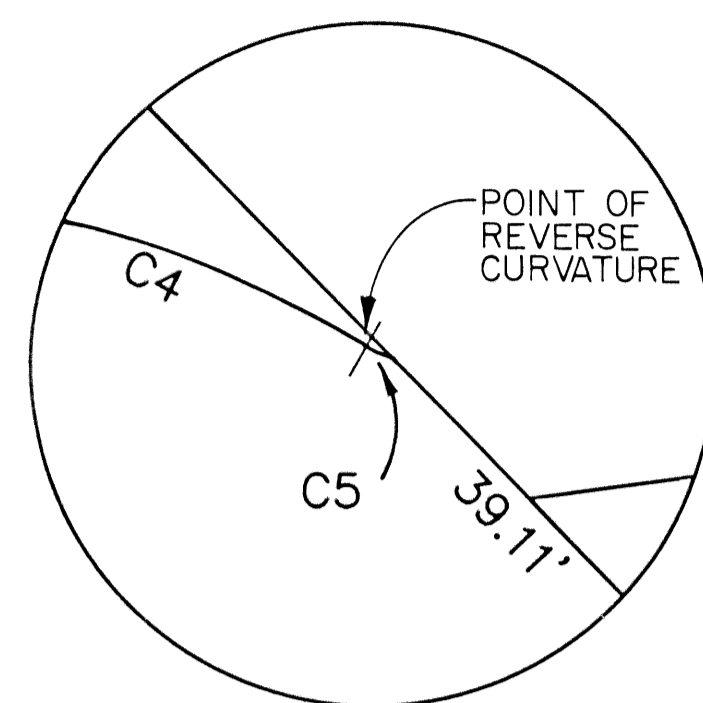
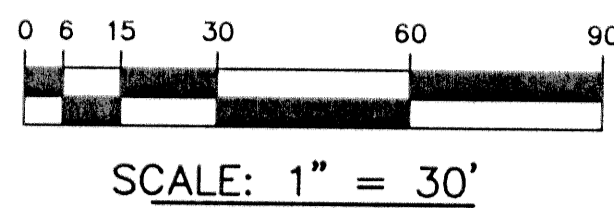
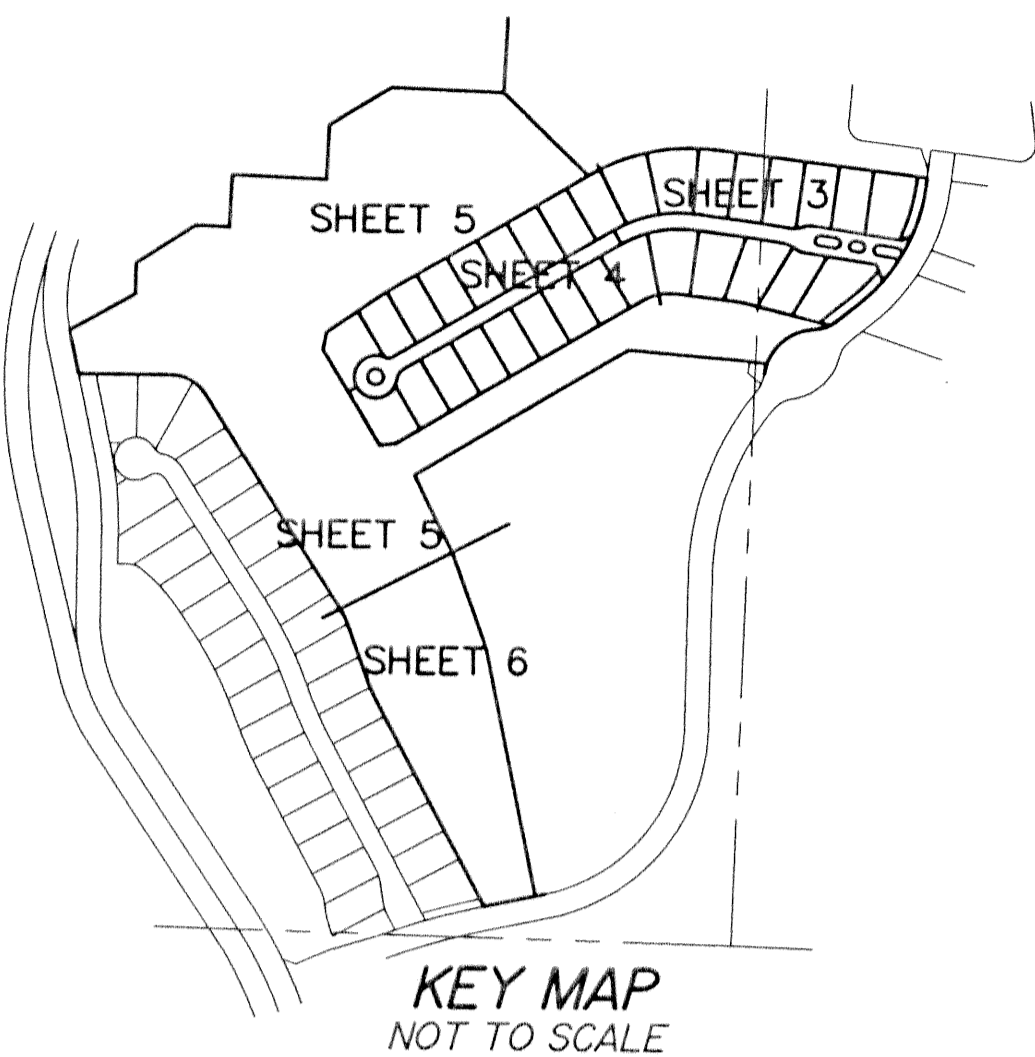


BALLENISLES Pod 8b

BEING A PORTION OF SECTIONS 11 AND 12, TOWNSHIP 42 SOUTH, RANGE 42 EAST, PALM BEACH COUNTY, FLORIDA, CITY OF PALM BEACH GARDENS AND A REPLAT OF A PORTION OF THE PLAT OF BOUNDARY OF GOLF CLUB SITE OF THE PROFESSIONAL GOLFERS' ASSOCIATION OF AMERICA, RECORDED IN PLAT BOOK 27, PAGES 182 AND 183, OF THE PUBLIC RECORDS OF PALM BEACH COUNTY, FLORIDA

SHEET 3 OF 6

NOVEMBER 1998

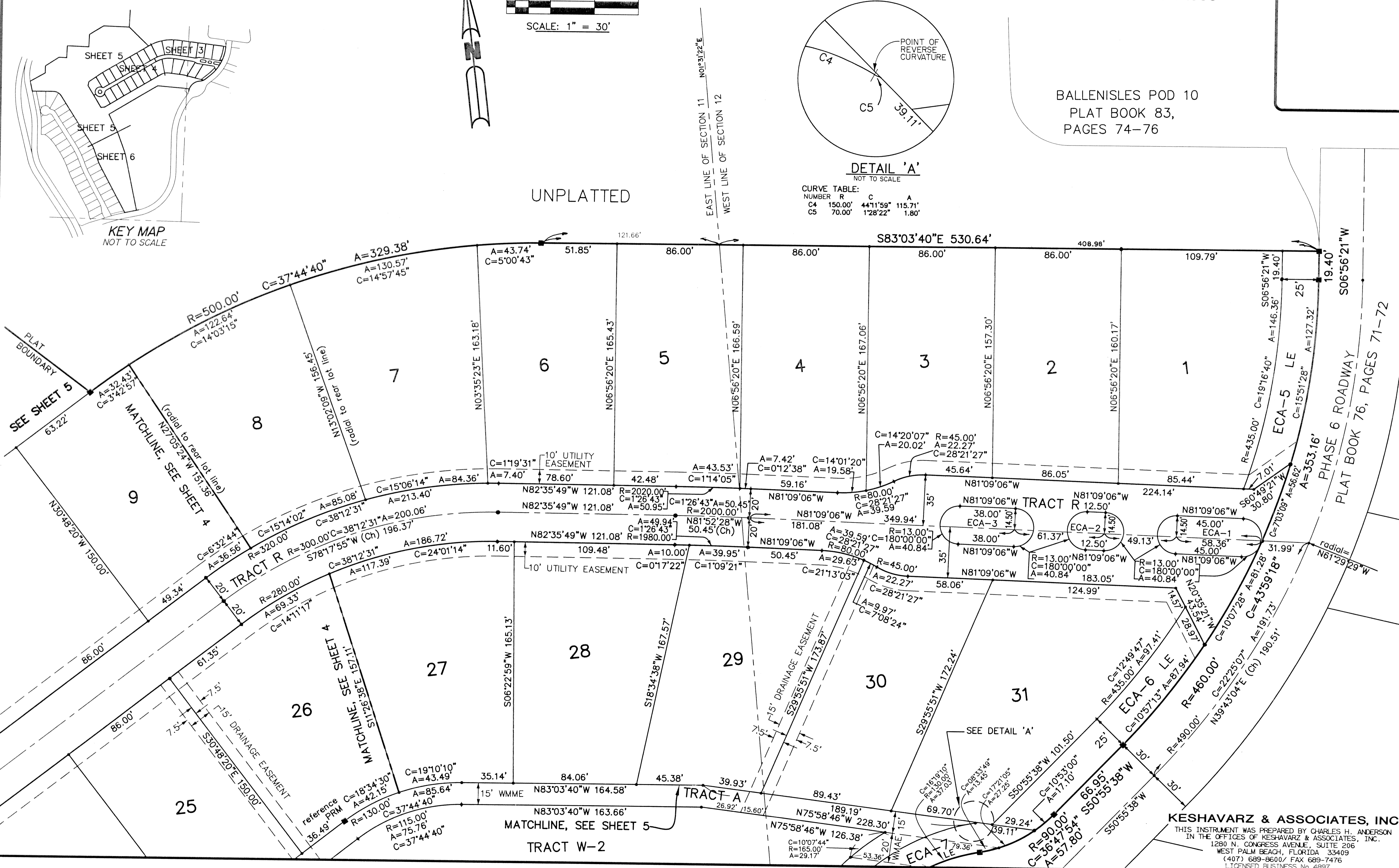


DETAIL 'A'
NOT TO SCALE

| CURVE NUMBER | R | C | A |
|--------------|---------|----------|---------|
| C4 | 150.00' | 441'59" | 115.71' |
| C5 | 70.00' | 1'28'22" | 1.80' |

BALLENISLES POD 10
PLAT BOOK 83,
PAGES 74-76

UNPLATTED



KESHAVARZ & ASSOCIATES, INC.
THIS INSTRUMENT WAS PREPARED BY CHARLES H. ANDERSON
IN THE OFFICES OF KESHAVARZ & ASSOCIATES, INC.
1280 N. CONGRESS AVENUE, SUITE 206
WEST PALM BEACH, FLORIDA 33409
(407) 689-8600 / FAX 689-7476
LICENSED BUSINESS No. 4897