

WATER MANAGEMENT TRACT No. 10  
TO BE MAINTAINED BY SMITH FARM MASTER ASSOCIATION, INC.

- LEGEND:**
- ⊙ = PERMANENT REFERENCE MONUMENT "P.L.S. 4828"
  - ⊙ = PERMANENT CONTROL POINT "P.C.P. 4828"
  - R = RADIUS
  - L = ARC LENGTH
  - Δ = DELTA (CENTRAL ANGLE)
  - PC = POINT OF CURVATURE
  - PT = POINT OF TANGENCY
  - PSM = PROFESSIONAL SURVEYOR & MAPPER
  - PLS = PROFESSIONAL LAND SURVEYOR
  - UE = UTILITY EASEMENT
  - DE = DRAINAGE EASEMENT
  - LAE = LIMITED ACCESS EASEMENT
  - LMAE = LAKE MAINTENANCE ACCESS EASEMENT
  - LME = LAKE MAINTENANCE EASEMENT
  - N = NORTHING (GRID)
  - E = EASTING (GRID)
  - (C) = CALCULATED
  - (R) = RADIAL
  - (T) = TANGENT
  - MREE = MAINTENANCE AND ROOF EAVE EASEMENT

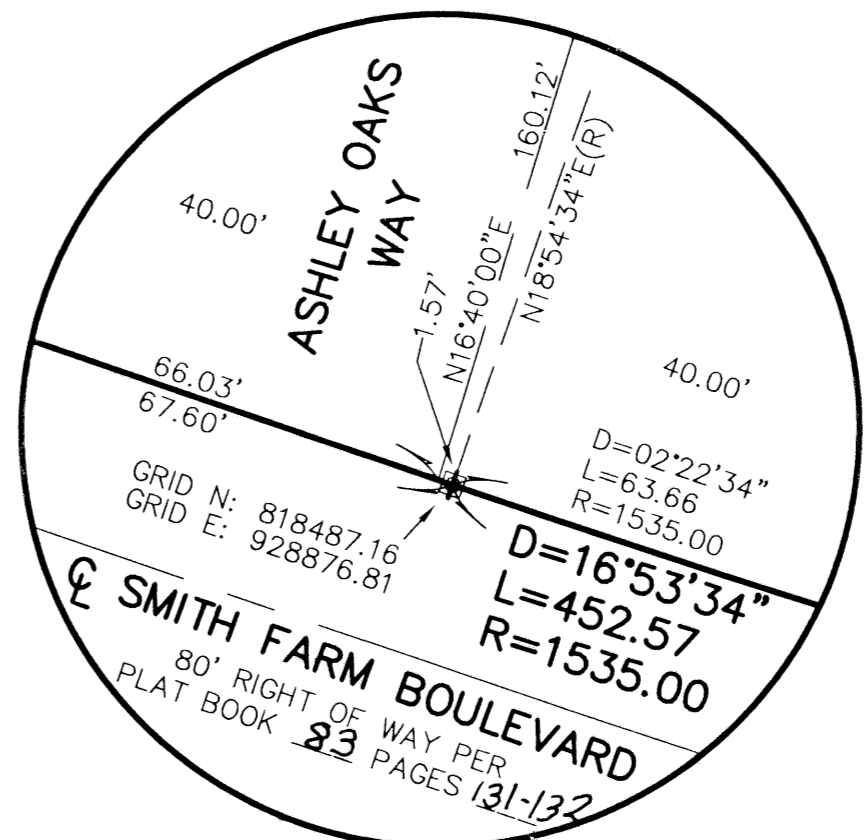
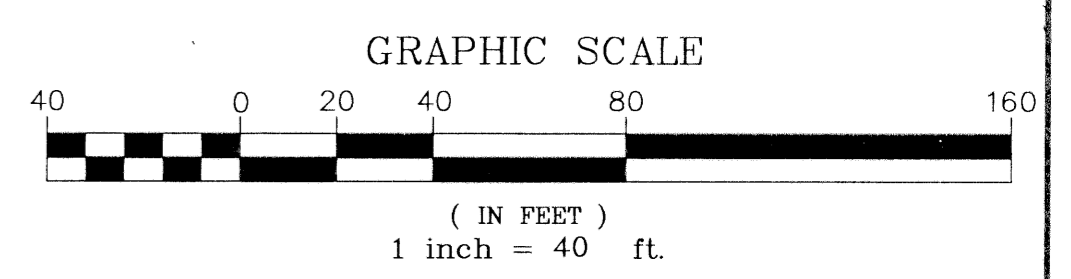
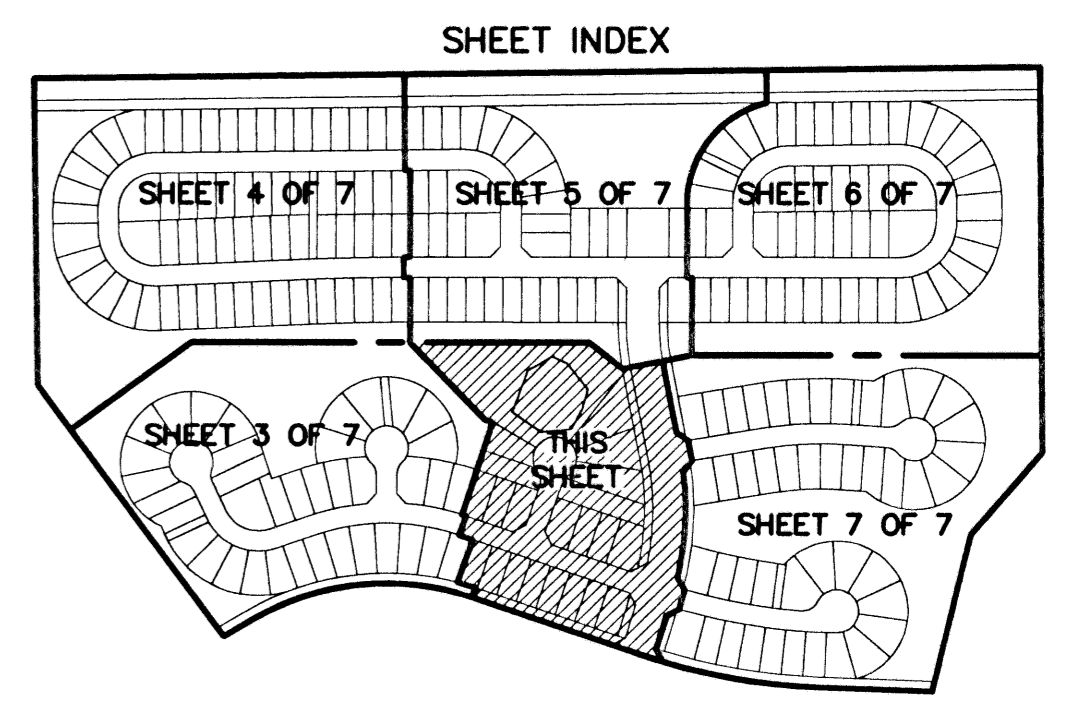
NOTE: POSITION OF SECTION CORNERS  
CALCULATED BASED ON PALM BEACH  
COUNTY SURVEY DEPARTMENT VALUES.

**SMITH DAIRY WEST P.U.D. - PLAT No. 8**  
 BEING A REPLAT OF PART OF BLOCK 38 OF PALM BEACH FARMS  
 COMPANY PLAT No. 3, AS RECORDED IN PLAT BOOK 2, PAGES  
 45 THROUGH 54 OF THE PUBLIC RECORDS OF PALM BEACH COUNTY, FLORIDA  
 IN PART OF SECTION 4, TOWNSHIP 45 SOUTH, RANGE 42 EAST,  
 PALM BEACH COUNTY, FLORIDA  
 SHEET 2 OF 7  
 MARCH 1998

**MASTER PLAN SMITH DAIRY PODS I, J, K AND L**

TRACT B1	0.58 Ac.
TRACT B2	0.39 Ac.
TRACT B3	0.04 Ac.
TRACT B4	0.04 Ac.
TRACT B5	0.32 Ac.
TRACT B6	0.13 Ac.
TRACT B7	0.17 Ac.
TRACT B8	1.40 Ac.
TRACT 1	3.09 Ac.
WATER MANAGEMENT TRACT 9	2.26 Ac.
WATER MANAGEMENT TRACT 10	8.21 Ac.
WATER MANAGEMENT TRACT 11	8.77 Ac.
TRACT OS-1	0.29 Ac.
TRACT OS-2	0.05 Ac.
TRACT OS-3	0.06 Ac.
TRACT OS-4	0.05 Ac.
TRACT OS-5	0.10 Ac.
TRACT OS-6	0.05 Ac.
TRACT OS-7	0.05 Ac.
TRACT OS-8	0.05 Ac.
TRACT OS-9	0.53 Ac.
TRACT OS-10	0.36 Ac.
ASHLEY OAKS WAY	1.75 Ac.
BOXLEAF PLACE	0.31 Ac.
COTTON ROSE LANE	0.40 Ac.
DOWNDRAWS LANE	0.82 Ac.
GREAT OAK DRIVE	2.23 Ac.
OAK GROVE CIRCLE	4.92 Ac.
LOTS	35.55 Ac.
<b>TOTAL:</b>	<b>72.97 Ac.</b>

PETITION No. PDD = 94-97  
 ZONING DISTRICT = P.U.D.  
 FUTURE LAND USE = MR-5  
 NUMBER OF UNITS = 257  
 DENSITY = 5.06 D.U./ACRES



Subdivision: Smith Dairy West  
 Book: 92  
 Page: 172  
 Flood Map #: 170A  
 Zoning: PUD  
 Quad #: 49  
 SE: 86-106  
 TAZ: 442  
 PUD Name: Smith Dairy West

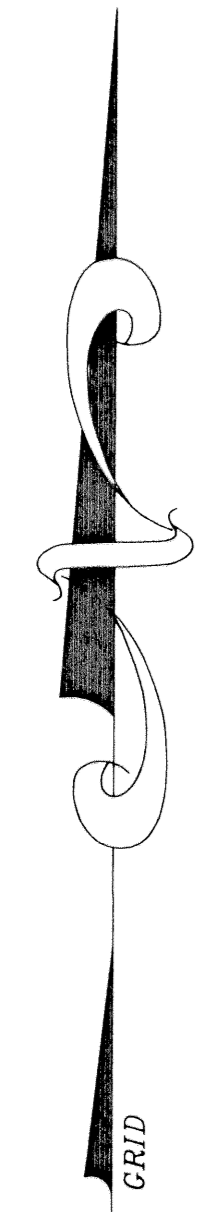
SCALE: 1"=40'  
 DATE: MAR. 1998

**NMI NICK MILLER, INC.**  
 Surveying & Mapping Consultants

**SMITH DAIRY WEST P.U.D. - PLAT No. 8**

2560 RCA Blvd., Suite 105  
 Palm Beach Gardens, Florida 33410  
 (561) 627-5200  
 D.B.P.R. Business License No. 4318

DRAWING NUMBER  
 94014DZ



GRID N: 818625.75  
 GRID E: 928472.25

SMITH DAIRY WEST P.U.D.  
 PLAT No. 7, PHASE I  
 PER PLAT BOOK 83, PAGES 131-132

SEE DETAIL  
 THIS SHEET