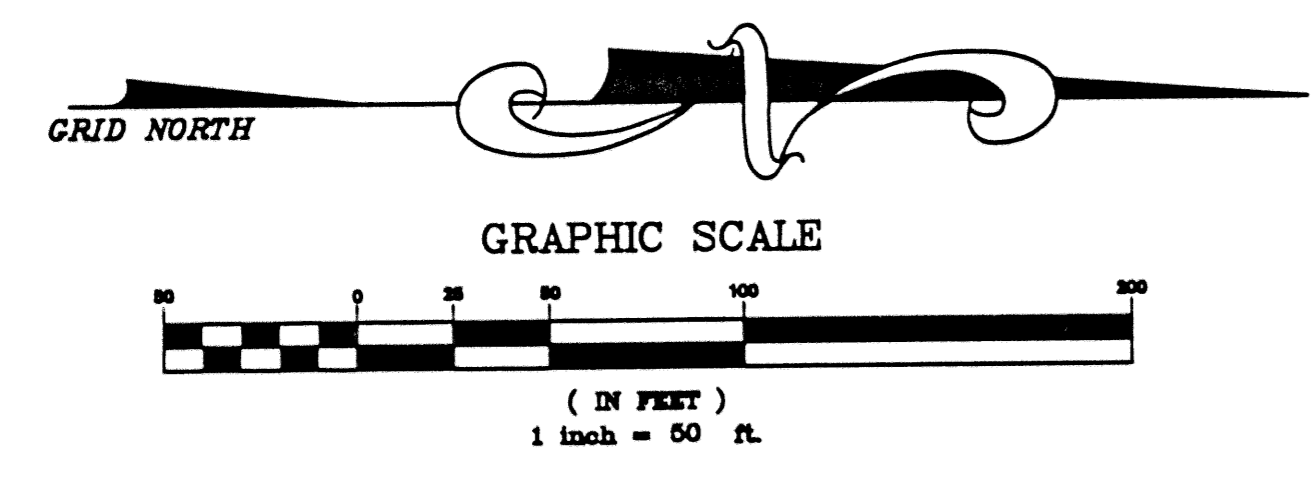


GATEWAY APARTMENTS, P.U.D.

A PORTION OF SECTION 18, TOWNSHIP 45 SOUTH, RANGE 43 EAST,
PALM BEACH COUNTY, FLORIDA

SHEET 5 OF 5

JULY, 1998

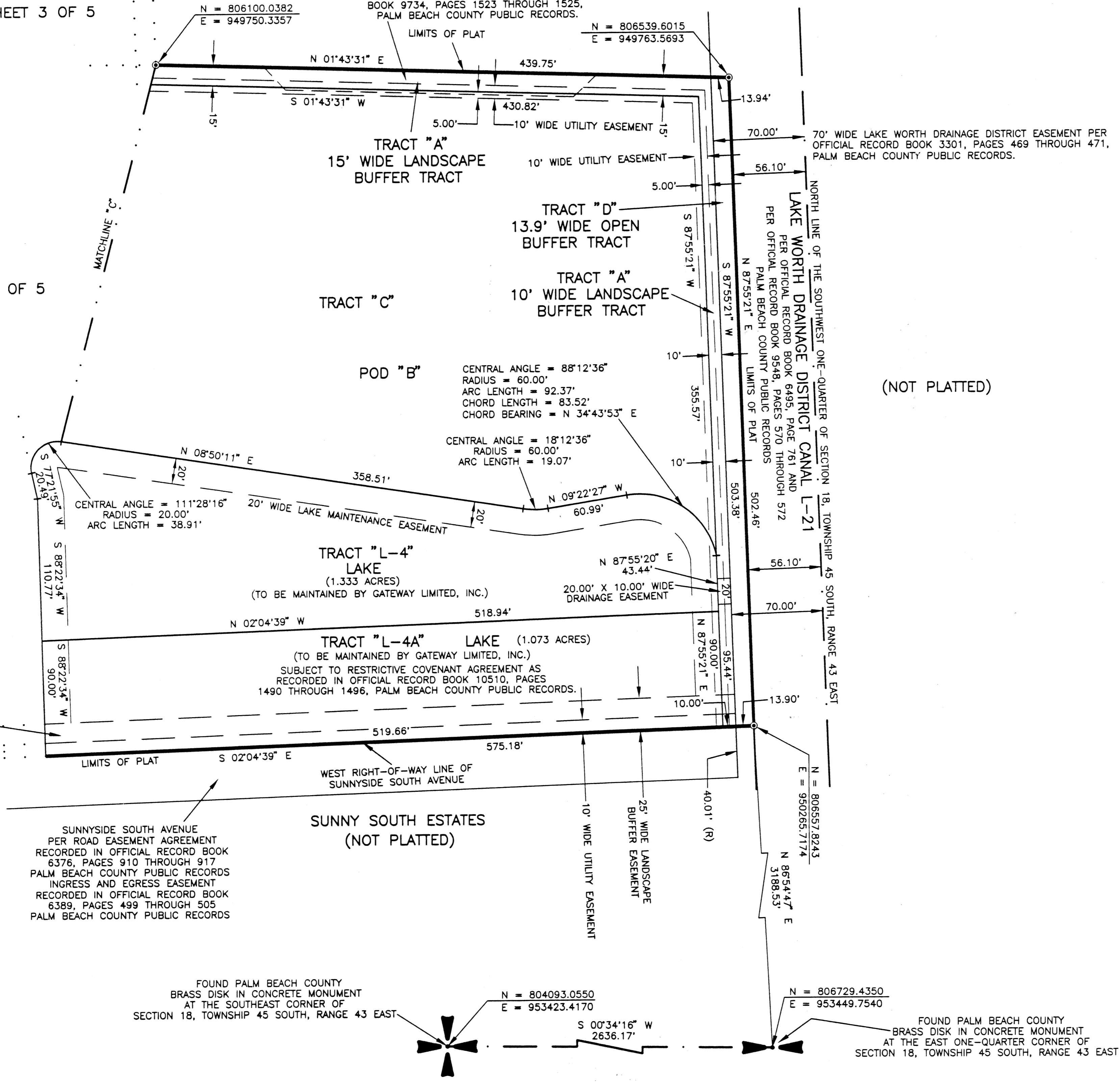


SEE SHEET 3 OF 5

SEE SHEET 4 OF 5

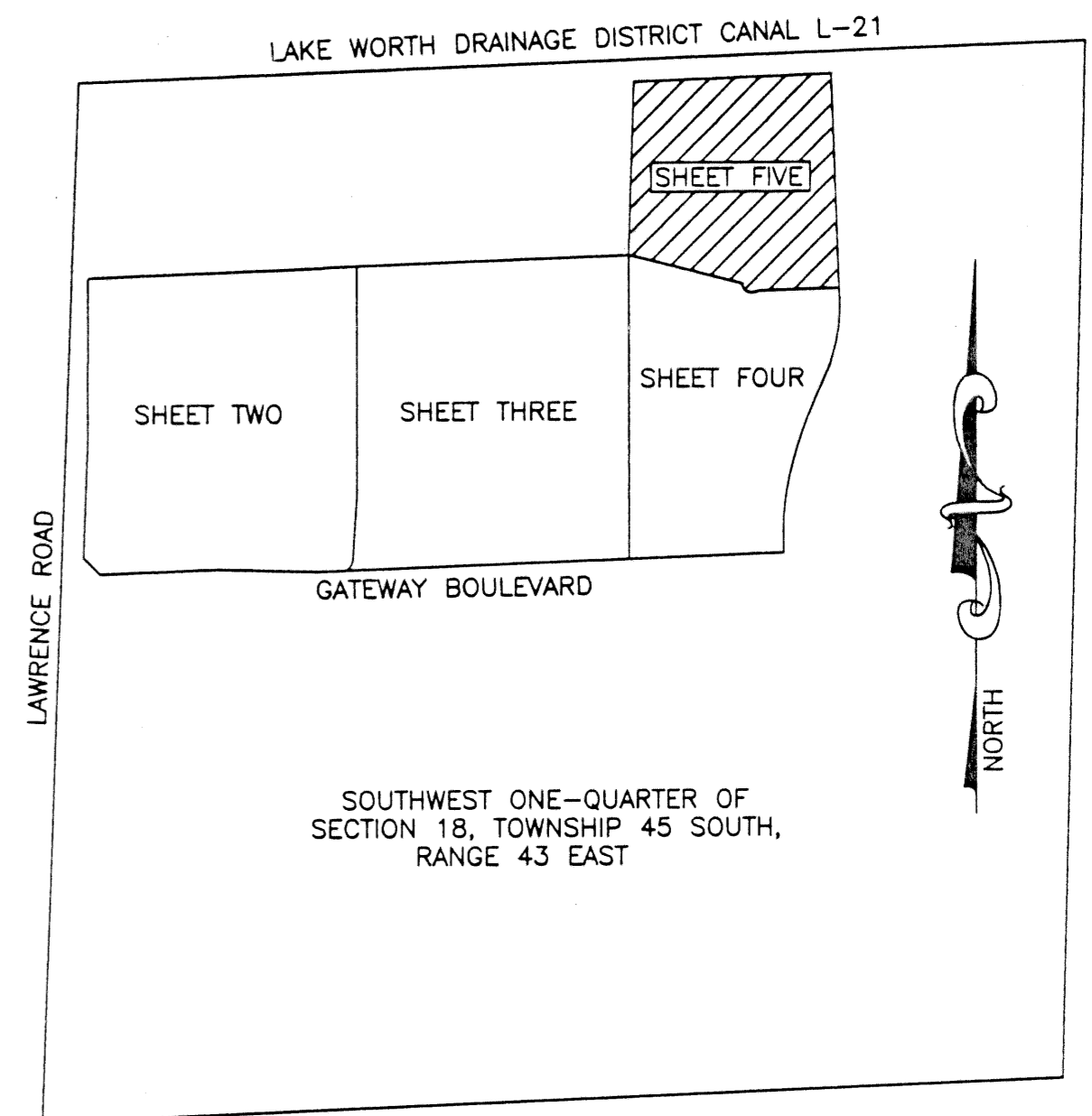
PLAT OF LAWRENCE LAKE, A P.U.D.
PLAT BOOK 64, PAGE 106-107
PALM BEACH COUNTY, FLORIDA

NOTE: NON-EXCLUSIVE EASEMENT PER OFFICIAL RECORD
BOOK 9734, PAGES 1523 THROUGH 1525,
PALM BEACH COUNTY PUBLIC RECORDS.



LOCATION AND KEY MAP

NOT TO SCALE



NOTES

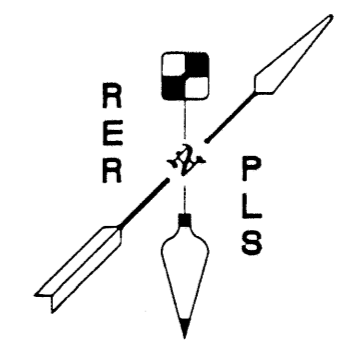
1. THE SURVEY BEARINGS SHOWN HEREON ARE BASED ON THE WEST LINE OF THE SOUTHWEST ONE-QUARTER OF SECTION 18, TOWNSHIP 45 SOUTH, RANGE 43 EAST.
N 02°03'35" E (PLAT BEARING) = 00°00'03" = COUNTERCLOCKWISE BEARING ROTATION (PLAT TO GRID)
N 02°03'32" E (GRID BEARING)
2. COORDINATES SHOWN ARE GRID
3. DATUM = NAD 83, 1990 ADJUSTMENT
4. ZONE = FLORIDA EAST
5. LINEAR UNIT = US SURVEY FOOT
6. COORDINATE SYSTEM 1983 STATE PLANE TRANSVERSE MERCATOR PROJECTION
7. ALL DISTANCES ARE GROUND
8. SCALE FACTOR = 1.0000394
9. GROUND DISTANCE X SCALE FACTOR = GRID DISTANCE
10. NO BUILDINGS OR ANY KIND OF CONSTRUCTION OR TREES OR SHRUBS SHALL BE PLACED ON ANY EASEMENT WITHOUT PRIOR WRITTEN APPROVAL OF ALL EASEMENT BENEFICIARIES AND ALL APPLICABLE COUNTY APPROVALS OR PERMITS AS REQUIRED FOR SUCH ENCROACHMENTS.
11. WHERE DRAINAGE EASEMENTS AND UTILITY EASEMENTS CROSS, DRAINAGE EASEMENTS TAKE PRECEDENCE.
12. ALL LINES INTERSECTING CURVES ARE RADIAL UNLESS OTHERWISE NOTED AS (NOT RADIAL).

LEGEND

- ⊙ = DENOTES P.R.M. (PERMANENT REFERENCE MONUMENT)
- = NOT TO SCALE

ABBREVIATIONS

- CA = CENTRAL ANGLE
- CB = CHORD BEARING
- C = CENTERLINE
- L = ARC LENGTH
- (N.R.) = NOT RADIAL
- R = RADIUS



ROLAND E. ROLLINS
PROFESSIONAL LAND SURVEYOR
2119 SOUTHEAST SUNFLOWER STREET
PORT ST. LUCIE, FLORIDA 34952
561-398-1509

SUBDIVISION Gateway Apartments
BOOK 83 PAGE 159 FLOOD MAP # 190 B
FLOOD ZONE B ZONING PUD
QUAD # 19 ZIP CODE 33462
SE 96-74
TAZ 425
PUD NAME Gateway Apartments