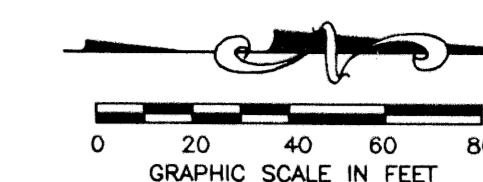


ADDISON RESERVE REPLAT LAKE 19

PART OF GLENEAGLES/POLO CLUB WEST P.U.D.
SITUATE IN SECTION 28, TOWNSHIP 46 SOUTH, RANGE 42 EAST
AND BEING A REPLAT OF TRACTS LK-19, L-19A THRU L-19F,
AND A PORTION OF TRACT GC-4,
"ADDISON RESERVE PLAT THREE" (PB 78, PGS 5-12) AND
A PORTION OF TRACTS LK-19 AND L-19G,
ALL OF TRACT GC-3 AND A PORTION OF TRACT GC-6,
"ADDISON RESERVE PLAT FOUR" (PB 79, PGS 76-81)
PALM BEACH COUNTY, FLORIDA
APRIL, 1998 SHEET 3 OF 4

153

STATE OF FLORIDA
COUNTY OF PALM BEACH
THIS PLAT WAS FILED FOR
RECORD _____ DAY OF _____
AD, 1998 AND DULY RECORDED
IN PLAT BOOK _____ ON PAGES
_____ AND _____
DOROTHY H. WILKEN, CLERK
BY: _____, D.C.

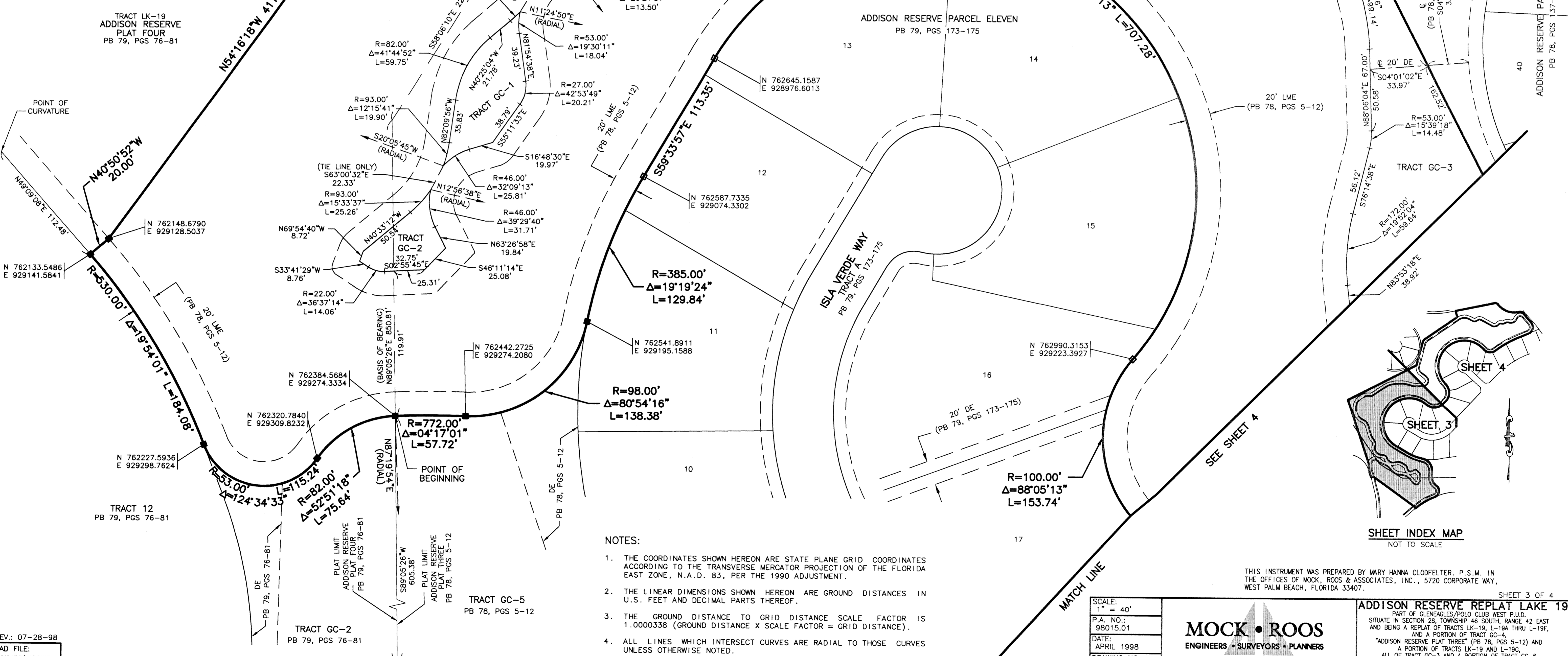


- LEGEND**
- BE BUFFER EASEMENT
 - DE DRAINAGE EASEMENT
 - Δ CENTRAL (DELTA) ANGLE
 - L ARC LENGTH
 - LAE LIMITED ACCESS EASEMENT
 - LMAE LAKE MAINTENANCE ACCESS EASEMENT
 - LME LAKE MAINTENANCE EASEMENT
 - PB PLAT BOOK
 - PG(S) PAGE(S)
 - R RADIUS
 - UE UTILITY EASEMENT
 - PERMANENT REFERENCE MONUMENT FOUND PLS# 4763
 - PERMANENT REFERENCE MONUMENT SET PLS# 4763

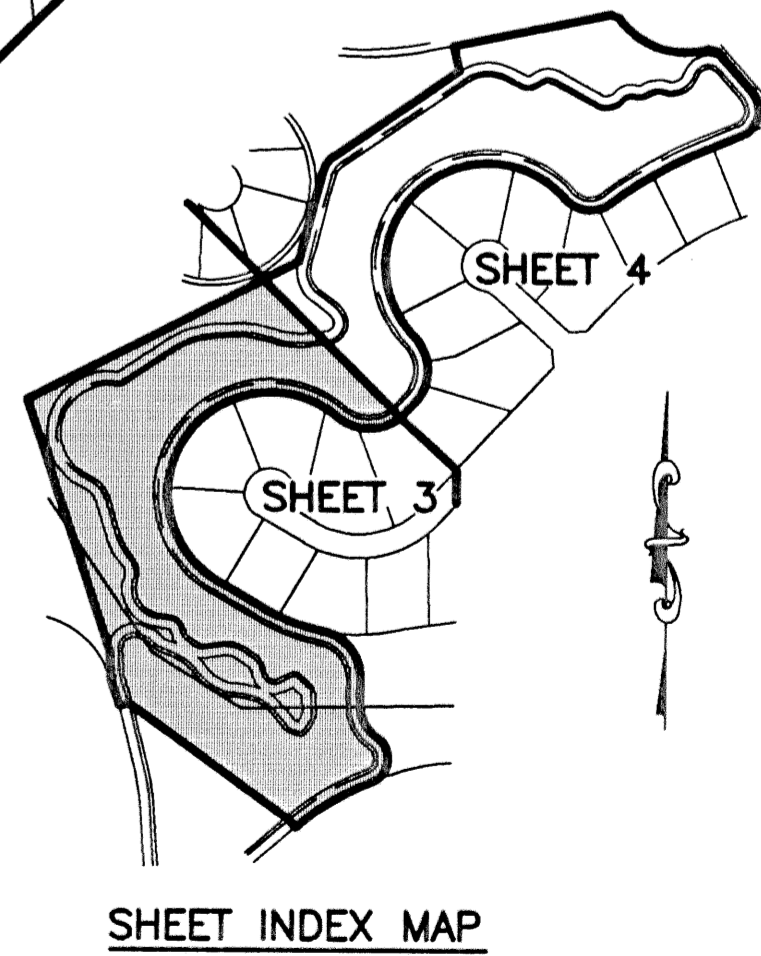
TRACT LK-19
TO BE MAINTAINED BY
ADDISON RESERVE MASTER PROPERTY
OWNERS ASSOCIATION, INC.
ITS SUCCESSORS AND ASSIGNS
SUBJECT TO EXISTING LITTORAL ZONE
RESTRICTIVE COVENANT AGREEMENT
ORB 10531, PG 258

TRACT GC-4
ADDISON RESERVE
PLAT THREE
PB 78, PGS 5-12

CIRCUIT COURT SEAL



- NOTES:**
1. THE COORDINATES SHOWN HEREON ARE STATE PLANE GRID COORDINATES ACCORDING TO THE TRANSVERSE MERCATOR PROJECTION OF THE FLORIDA EAST ZONE, N.A.D. 83, PER THE 1990 ADJUSTMENT.
 2. THE LINEAR DIMENSIONS SHOWN HEREON ARE GROUND DISTANCES IN U.S. FEET AND DECIMAL PARTS THEREOF.
 3. THE GROUND DISTANCE TO GRID DISTANCE SCALE FACTOR IS 1.0000338 (GROUND DISTANCE X SCALE FACTOR = GRID DISTANCE).
 4. ALL LINES WHICH INTERSECT CURVES ARE RADIAL TO THOSE CURVES UNLESS OTHERWISE NOTED.



SCALE: 1" = 40'
P.A. NO.: 98015.01
DATE: APRIL 1998
DRAWING NO.: 46-42-28-164

MOCK • ROOS
ENGINEERS • SURVEYORS • PLANNERS
5720 Corporate Way, West Palm Beach, Florida 33407
(561) 683-3113, fax 478-7248

ADDISON RESERVE REPLAT LAKE 19
PART OF GLENEAGLES/POLO CLUB WEST P.U.D.
SITUATE IN SECTION 28, TOWNSHIP 46 SOUTH, RANGE 42 EAST
AND BEING A REPLAT OF TRACTS LK-19, L-19A THRU L-19F,
AND A PORTION OF TRACT GC-4,
"ADDISON RESERVE PLAT THREE" (PB 78, PGS 5-12) AND
A PORTION OF TRACTS LK-19 AND L-19G,
ALL OF TRACT GC-3 AND A PORTION OF TRACT GC-6
"ADDISON RESERVE PLAT FOUR" (PB 79, PGS 76-81)
PALM BEACH COUNTY, FLORIDA

ADDISON RESERVE
REPLAT LAKE 19
PAGE 153
FLOOD ZONE 215A
ZONING K5/15E
QUAD# 52
SEC 20-215
TAX# 478
FUD NAME Addison Reserve

REV: 07-28-98
CAD FILE:
TWCADD\ADDIRP41

SHEET 3 OF 4