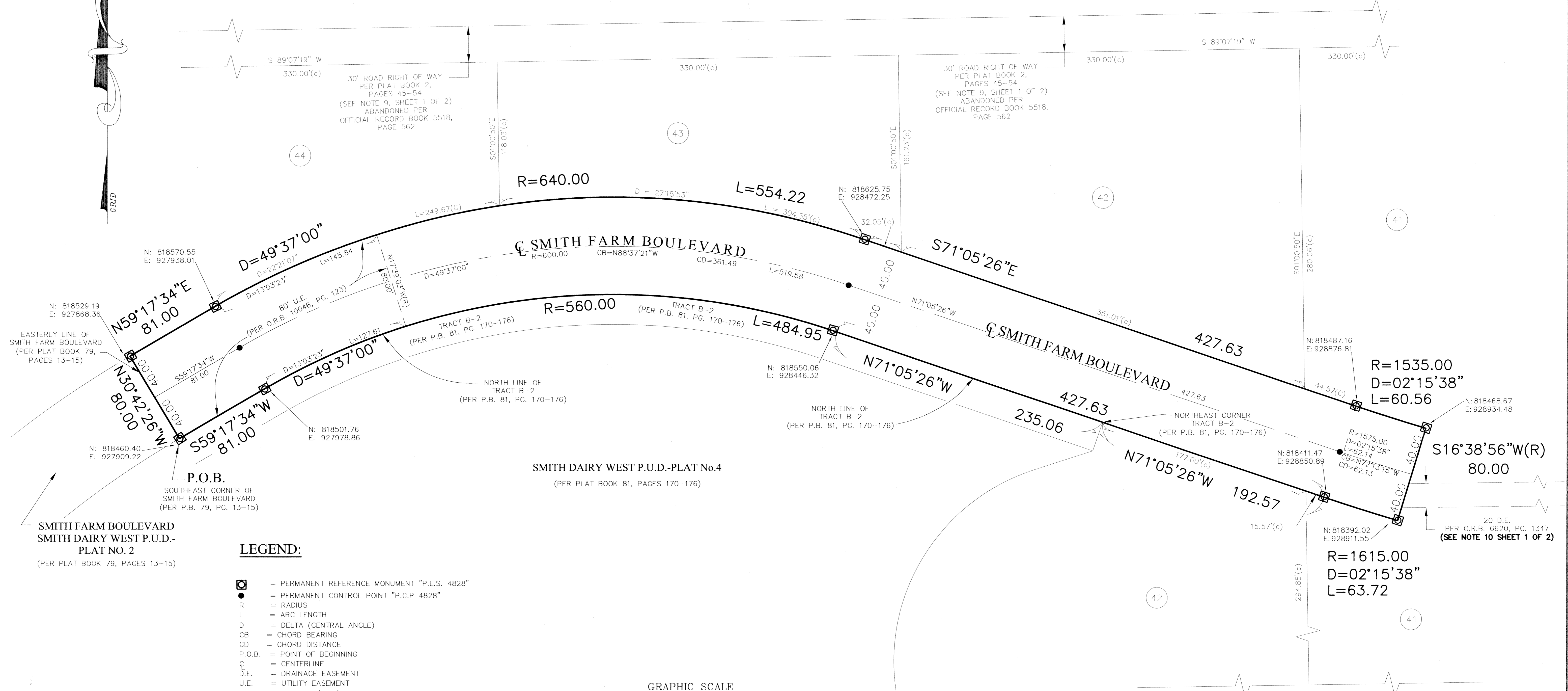
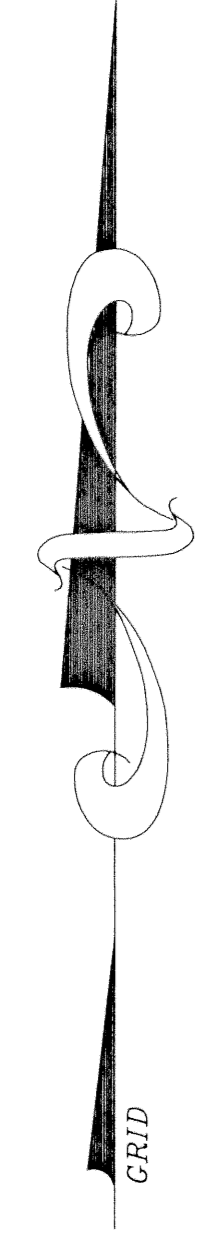
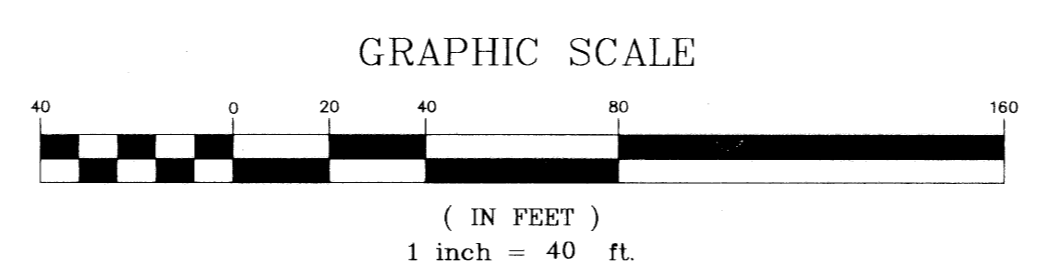


**SMITH DAIRY WEST P.U.D.—PLAT No. 7, PHASE I**  
 BEING A REPLAT OF PART OF BLOCK 38 OF PALM BEACH FARMS  
 COMPANY PLAT No. 3, AS RECORDED IN PLAT BOOK 2, PAGES  
 45 THROUGH 54 OF THE PUBLIC RECORDS OF PALM BEACH COUNTY, FLORIDA  
 IN PART OF SECTION 4, TOWNSHIP 45 SOUTH, RANGE 42 EAST,  
 PALM BEACH COUNTY, FLORIDA  
 SHEET 2 OF 2  
 JUNE 1998



**LEGEND:**

- ☐ = PERMANENT REFERENCE MONUMENT "P.L.S. 4828"
- = PERMANENT CONTROL POINT "P.C.P. 4828"
- R = RADIUS
- L = ARC LENGTH
- D = DELTA (CENTRAL ANGLE)
- CB = CHORD BEARING
- CD = CHORD DISTANCE
- P.O.B. = POINT OF BEGINNING
- C = CENTERLINE
- D.E. = DRAINAGE EASEMENT
- U.E. = UTILITY EASEMENT
- N = NORTHING(GRID)
- E = EASTING(GRID)
- (C) = CALCULATED
- (R) = RADIAL
- 44 = TRACT AND BLOCK NUMBER, PER PALM BEACH FARMS COMPANY PLAT No. 3 PER PLAT BOOK 2, PAGES 45-54
- O.R.B. = OFFICIAL RECORD BOOK
- PG. = PAGE
- P.B. = PLAT BOOK



SUBDIVISION Smith Dairy West P.U.D. Phase I  
 PAGE 132  
 FLOOD MAP # 1704A  
 ZONING PUD  
 QUAD # 49  
 SE 14-77  
 TAZ 942  
 PUD NAME Smith Dairy West

SCALE: 1"=40'	 <b>NICK MILLER, INC.</b> <i>Surveying &amp; Mapping Consultants</i>
DATE: JUNE 1998	
<b>SMITH DAIRY WEST P.U.D.—PLAT No. 7, PHASE I</b>	
2560 RCA Blvd., Suite 105 Palm Beach Gardens, Florida 33410 (561) 627-5200 D.B.P.R. Business License No. 4318	DRAWING NUMBER 94014FP_1