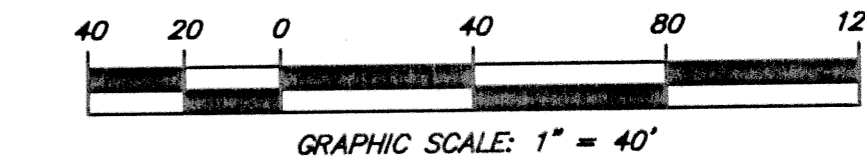
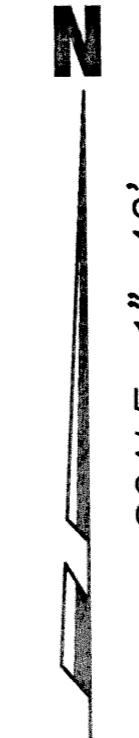


PLAT OF HAVERHILL SQUARE

A REPLAT OF A PORTION OF TRACTS 9 AND 24, MODEL LAND COMPANY
SUBDIVISION OF THE NORTH 1/2 OF SECTION 24, TOWNSHIP 44 SOUTH, RANGE 42 EAST
CITY OF GREENACRES, PALM BEACH COUNTY, FLORIDA

SEPTEMBER, 1998
SHEET 2 OF 2 SHEETS

TRACT 9
MODEL LAND COMPANY SUBDIVISION
(PLAT BOOK 5, PAGE 76; P.B.C.R.)



SURVEYOR'S NOTES:

- P.O.B. INDICATES POINT OF BEGINNING
- P.O.C. INDICATES POINT OF COMMENCEMENT
- O.R.B. INDICATES OFFICIAL RECORDS BOOK
- P.G. INDICATES PAGE
- P.B.C.R. INDICATES PALM BEACH COUNTY RECORDS
- U.E. INDICATES UTILITY EASEMENT
- L.A.E. INDICATES LIMITED ACCESS EASEMENT
- ⊙ INDICATES PERMANENT REFERENCE MONUMENT (P.R.M.) NO. 4315

GENERAL NOTES:

NOTICE: THIS PLAT, AS RECORDED IN ITS GRAPHIC FORM, IS THE OFFICIAL DEPICTION OF THE SUBDIVIDED LANDS DESCRIBED HEREIN AND WILL IN NO CIRCUMSTANCES BE SUPPLANTED IN AUTHORITY BY ANY OTHER GRAPHIC OR DIGITAL FORM OF THE PLAT.
THERE MAY BE ADDITIONAL RESTRICTIONS THAT ARE NOT RECORDED ON THIS PLAT THAT MAY BE FOUND IN THE PUBLIC RECORDS OF THIS COUNTY AND/OR THIS CITY.

BEARINGS SHOWN HEREON ARE RELATIVE TO AN ASSUMED MERIDIAN. THE WEST LINE OF THE NORTHWEST ONE-QUARTER (NW 1/4) OF SECTION 24, TOWNSHIP 44 SOUTH, RANGE 42 EAST IS ASSUMED TO BEAR NORTH 01°54'32" EAST.

NO BUILDING NOR ANY KIND OF CONSTRUCTION OTHER THAN ASPHALT PAVEMENT, SHALL BE PLACED ON UTILITY, DRAINAGE, WATER OR SEWER EASEMENTS.

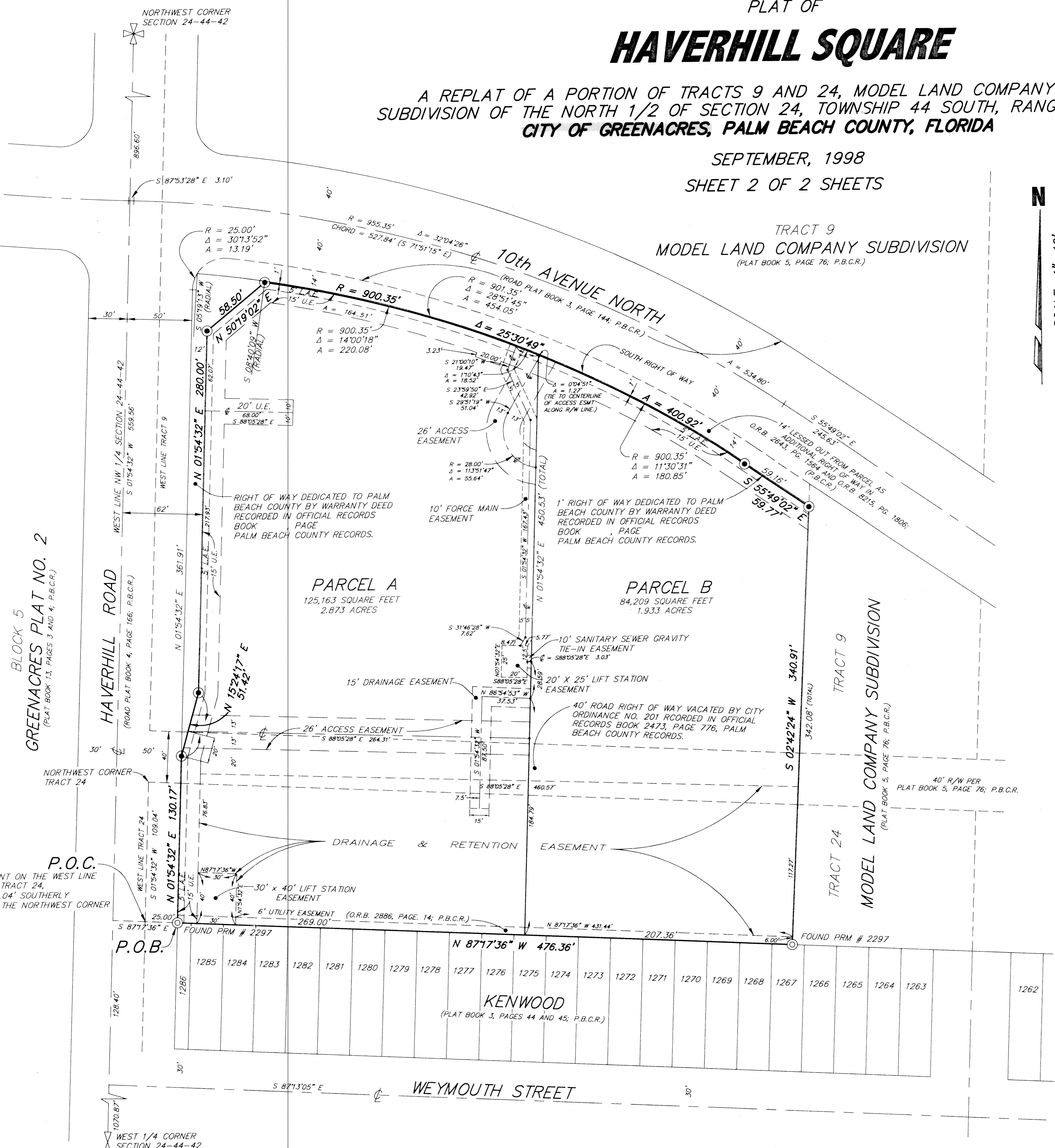
STRUCTURES, TREES OR SHRUBS SHALL NOT BE PLACED IN DRAINAGE, MAINTENANCE OR UTILITY EASEMENTS WITHOUT THE PERMISSION OF THE OCCUPYING UTILITY.

PALM BEACH COUNTY WATER UTILITIES DEPARTMENT SHALL HAVE THE RIGHT TO CONSTRUCT AND MAINTAIN WATER AND SEWER FACILITIES WITHIN UTILITY EASEMENTS AS SHOWN HEREON.

WHERE DRAINAGE, UTILITY, WATER OR SEWER EASEMENTS CROSS, DRAINAGE EASEMENTS SHALL TAKE PRECEDENCE.

NOTICE: BUILDING SETBACK LINES SHALL BE IN ACCORDANCE WITH CITY OF GREENACRES ORDINANCES AND SITE PLAN APPROVAL.

THE LANDS SHOWN HEREON ARE SUBJECT TO TERMS AND CONDITIONS AS CONTAINED IN THE DECLARATION OF COVENANTS, CONDITIONS, RESTRICTIONS AND EASEMENTS AS RECORDED IN OFFICIAL RECORDS BOOK 10342, PAGE 1819, OF THE PUBLIC RECORDS OF PALM BEACH COUNTY, FLORIDA.



BLOCK 5
GREENACRES PLAT NO. 2
(PLAT BOOK 13, PAGES 3 AND 4; P.B.C.R.)

HAVERHILL ROAD
(ROAD PLAT BOOK 4, PAGE 166; P.B.C.R.)

WEST LINE NW 1/4 SECTION 24-44-42
S 01°54'32" W 559.56'

WEST 1/4 CORNER SECTION 24-44-42

PARCEL A
125,163 SQUARE FEET
2.873 ACRES

PARCEL B
84,209 SQUARE FEET
1.933 ACRES

TRACT 9
MODEL LAND COMPANY SUBDIVISION
(PLAT BOOK 5, PAGE 76; P.B.C.R.)

TRACT 24
MODEL LAND COMPANY SUBDIVISION
(PLAT BOOK 5, PAGE 76; P.B.C.R.)

KENWOOD
(PLAT BOOK 3, PAGES 44 AND 45; P.B.C.R.)

SUBDIVISION Haverhill Square
BOOK 83
PAGE 17
FLOOD ZONE
QUAD #
SE
TAZ 590
PUD NAME City of Greenacres

THIS INSTRUMENT WAS PREPARED BY: DAVID E. ROHAL
CRAVEN THOMPSON & ASSOCIATES, INC.
SURVEYORS ENGINEERS PLANNERS
3563 N.W. 53RD STREET FORT LAUDERDALE FLORIDA 33309
(954) 739-6400

