

THIS INSTRUMENT WAS PREPARED BY:
JEFF S. HODAPP OF
CARNAHAN-PROCTOR AND ASSOCIATES, INC.
CONSULTING ENGINEERS
 SURVEYORS ENGINEERS PLANNERS
 6191 WEST ATLANTIC BLVD., MARGATE, FLORIDA 33063
 FEBRUARY 1997 930506D JSH

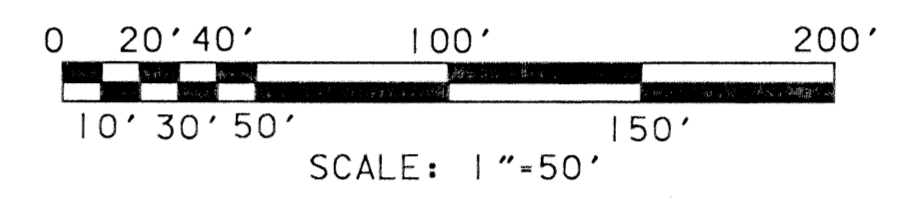
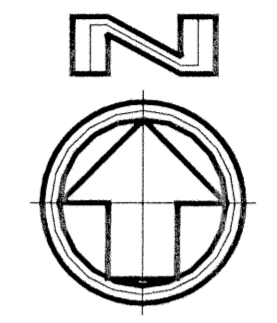
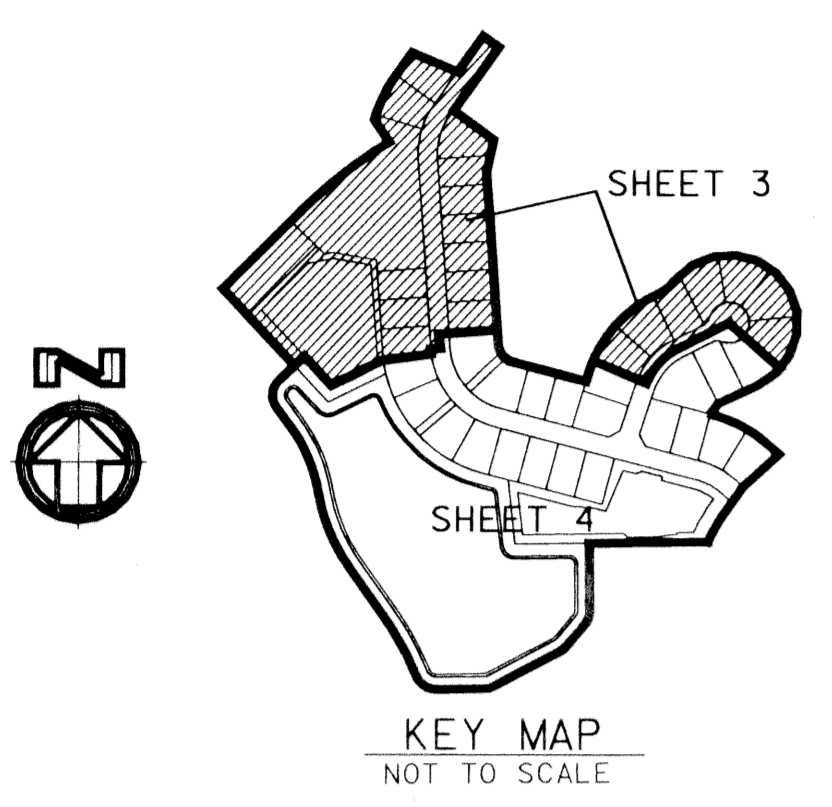
SMITH DAIRY EAST P.U.D.

0677-002

109

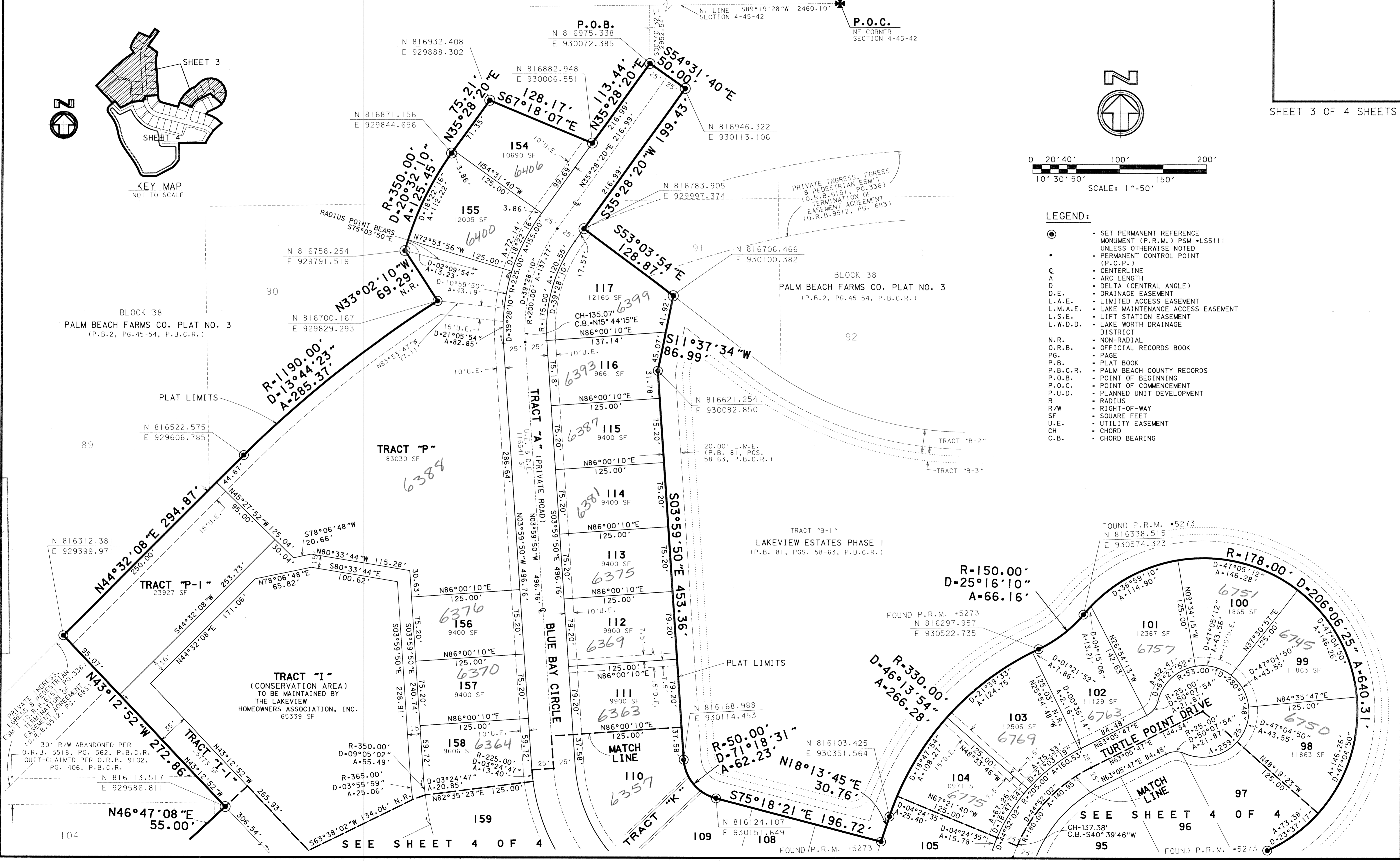
LAKEVIEW ESTATES PHASE 2

A REPLAT OF A PORTION OF BLOCK 38, "PALM BEACH FARMS CO. PLAT NO. 3"
 (P.B.2, PGS.45-54, P.B.C.R.) AND THE RIGHTS-OF-WAY INCLUDED THEREIN,
 IN SECTION 4, TOWNSHIP 45 SOUTH, RANGE 42 EAST, PALM BEACH COUNTY, FLORIDA



SHEET 3 OF 4 SHEETS

- LEGEND:**
- SET PERMANENT REFERENCE MONUMENT (P.R.M.) PSM #LS5111 UNLESS OTHERWISE NOTED
 - PERMANENT CONTROL POINT (P.C.P.)
 - ⊕ CENTERLINE
 - ⤵ ARC LENGTH
 - Δ DELTA (CENTRAL ANGLE)
 - D.E. DRAINAGE EASEMENT
 - L.A.E. LIMITED ACCESS EASEMENT
 - L.M.A.E. LAKE MAINTENANCE ACCESS EASEMENT
 - L.S.E. LIFT STATION EASEMENT
 - L.W.D.D. LAKE WORTH DRAINAGE DISTRICT
 - N.R. NON-RADIAL
 - O.R.B. OFFICIAL RECORDS BOOK
 - PG. PAGE
 - P.B. PLAT BOOK
 - P.B.C.R. PALM BEACH COUNTY RECORDS
 - P.O.B. POINT OF BEGINNING
 - P.O.C. POINT OF COMMENCEMENT
 - P.U.D. PLANNED UNIT DEVELOPMENT
 - R. RADIUS
 - R/W RIGHT-OF-WAY
 - SF. SQUARE FEET
 - U.E. UTILITY EASEMENT
 - CH. CHORD
 - C.B. CHORD BEARING



Lakeview Estates
 PHASE 2
 FLOOD MAP # 1704
 ZONING P.O.D.
 SE 44-57 ZIP CODE 33437
 TAZ 042
 PUD NAME Smith Dairy East

PRIVATE INGRESS
 EGRESS & PEDESTRIAN
 ESM-T
 TERMINATION OF
 EASEMENT AGREEMENT
 (O.R.B. 6151, PG. 336)
 (O.R.B. 9512, PG. 683)

FILE: g:\proj\egrs\ae08\c\se08\plp3.dgn
 DATE: 04-AUG-98 11:35

104

SEE SHEET 4 OF 4

109

105

SEE SHEET 4 OF 4

96

95