

AUTONATION OF PALM BEACH

(MULTI-USE PLANNED DEVELOPMENT)

A REPLAT OF A PORTION OF TRACT 1 IN BLOCK 4 OF "THE PALM BEACH FARMS CO. PLAT NO. 3", AS RECORDED IN PLAT BOOK 2 AT PAGES 45 THROUGH 54, TOGETHER WITH A PORTION OF TRACT 28 IN BLOCK 1 OF "THE PALM BEACH FARMS CO. PLAT NO. 9", AS RECORDED IN PLAT BOOK 5 AT PAGE 58, BOTH OF THE PUBLIC RECORDS OF PALM BEACH COUNTY, FLORIDA AND TOGETHER WITH A SUBDIVISION OF THAT PORTION OF THE UNPLATTED LANDS IN THE NORTHEAST ONE-QUARTER LYING SOUTH OF OKEECHOBEE BOULEVARD AND WEST OF FLORIDA'S TURNPIKE, PALM BEACH COUNTY, FLORIDA SITUATE, LYING AND BEING IN SECTION 27, TOWNSHIP 43 SOUTH, RANGE 42 EAST

IN 4 SHEETS
PREPARED BY:

PBSJ

POST, BUCKLEY, SCHUH & JERNIGAN, INC.

FLORIDA CERTIFICATE OF AUTHORIZATION NUMBER LB 24

2001 N.W. 107th AVENUE

MIAMI, FLORIDA 33172-2507

(305) 592-7275

JULY 1998

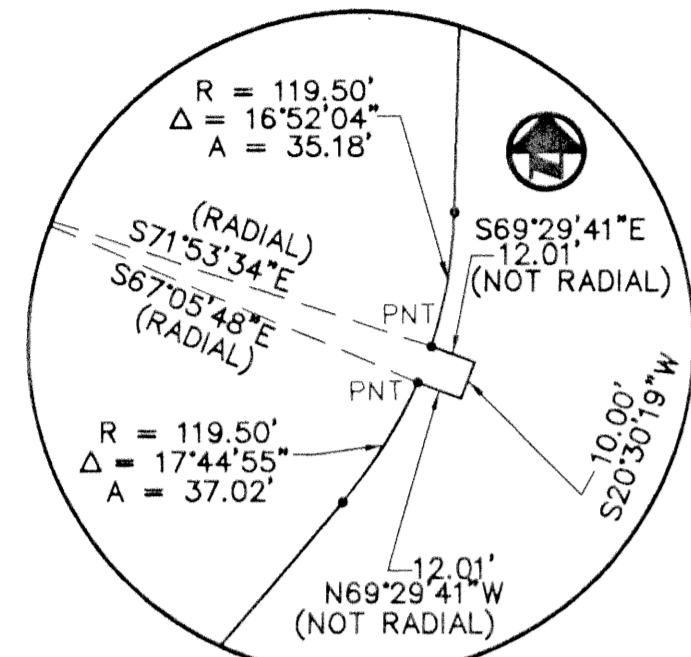
SCALE AS SHOWN

SHEET 4 OF 4 SHEETS

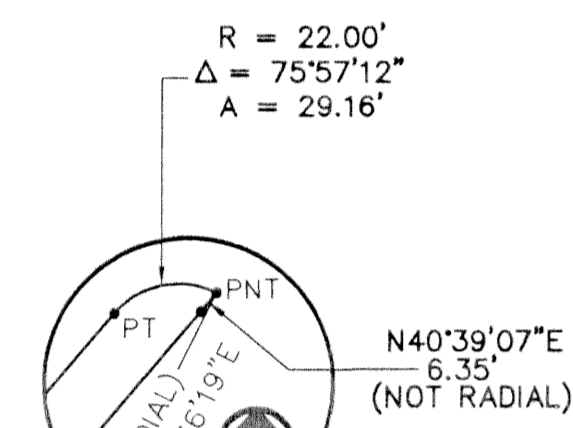
5000-273

95

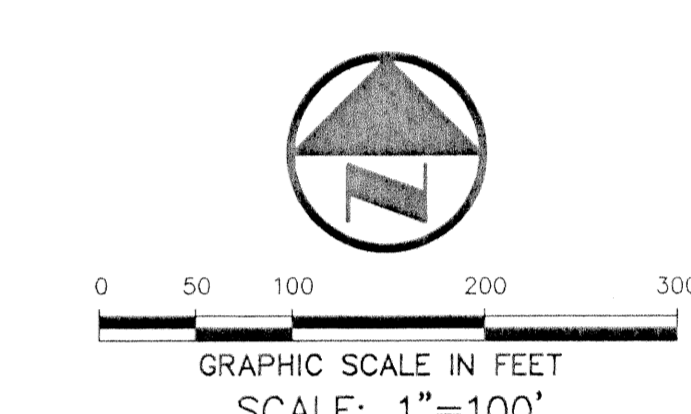
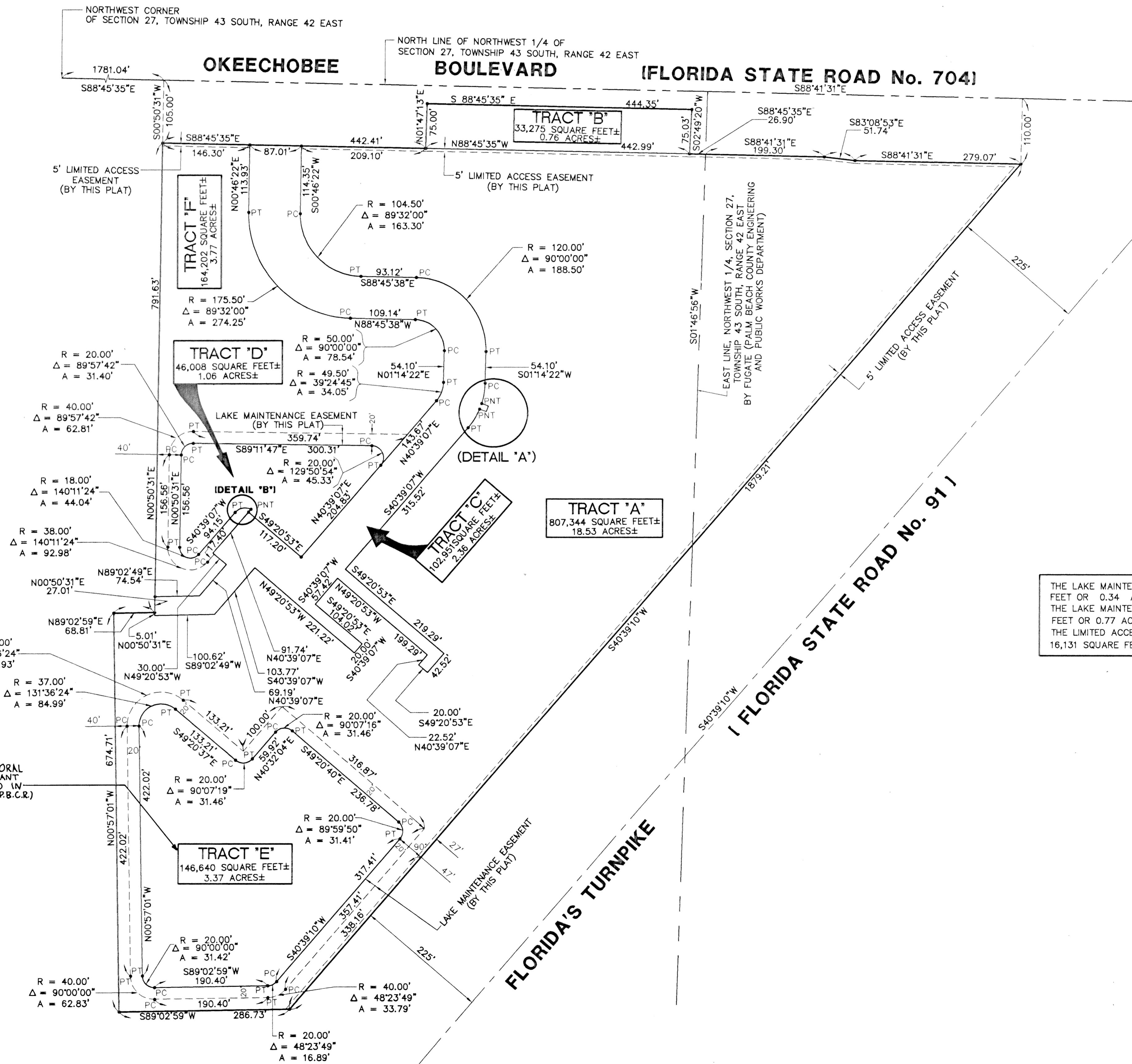
STATE OF FLORIDA)
COUNTY OF PALM BEACH) SS
THIS PLAT WAS FILED FOR RECORD
AT _____ THIS _____
DAY OF _____, 1998
AND DULY RECORDED IN PLAT BOOK
_____ ON PAGES _____
THROUGH _____
DOROTHY H. WILKEN
CLERK OF THE CIRCUIT COURT
BY: _____ DEPUTY CLERK



DETAIL "A"
SCALE=1"=50'



DETAIL "B"
SCALE=1"=50'



TRACT	AREA TABULATION	
	SQUARE FEET ±	ACRES ±
"A"	807,344	18.53
"B"	33,275	0.76
"C"	102,951	2.36
"D"	46,008	1.06
"E"	146,640	3.37
"F"	164,202	3.77
TOTAL	1,300,420	29.85

THE LAKE MAINTENANCE EASEMENT SURROUNDING THE AFOREMENTIONED TRACT "D" CONTAINS 14,763 SQUARE FEET OR 0.34 ACRES, MORE OR LESS.
THE LAKE MAINTENANCE EASEMENT SURROUNDING THE AFOREMENTIONED TRACT "E" CONTAINS 33,692 SQUARE FEET OR 0.77 ACRES, MORE OR LESS.
THE LIMITED ACCESS RIGHT OF WAY EASEMENTS AS SHOWN HEREON CONTAIN A CUMULATIVE TOTAL OF 16,131 SQUARE FEET OR 0.37 ACRES, MORE OR LESS.

LEGEND:

- L.W.D.D. - LAKE WORTH DRAINAGE DISTRICT
- P.B.C.R. - PALM BEACH COUNTY RECORDS
- O.R.B. - OFFICIAL RECORDS BOOK
- D.B. - DEED BOOK
- P.B. - PLAT BOOK
- P. - PAGE
- ∅ - CENTERLINE
- N - NORTHING
- E - EASTING
- PT - POINT OF TANGENCY
- PC - POINT OF CURVATURE
- R - RADIUS
- A - ARC LENGTH
- Δ - CENTRAL ANGLE

FOR PLAT GEOMETRY AND PRIOR ENCUMBRANCES OF RECORD, SEE SHEETS 2 AND 3 OF 4

SUBDIVISION: Autonation of Palm Beach
 BOOK: 03 PAGE: 95
 PLAT NO: 95
 PLAT ZONE: B
 COUNTY: MUPD
 DATE: 95-22
 PUB NAME: Autonation of Palm Beach
 142
 810

MULT-4.dwg 7-27-98 20456 pm EST