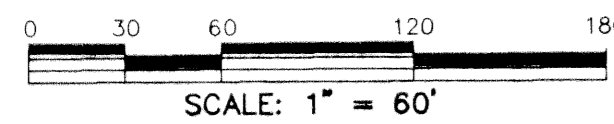
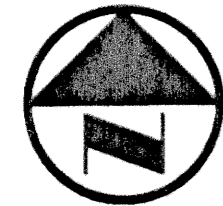


# AUTONATION OF PALM BEACH

5000-273

93

(MULTI-USE PLANNED DEVELOPMENT)  
 A REPLAT OF A PORTION OF TRACT 1 IN BLOCK 4 OF 'THE PALM BEACH FARMS CO. PLAT NO. 3', AS RECORDED IN PLAT BOOK 2 AT PAGES 45 THROUGH 54, TOGETHER WITH A PORTION OF TRACT 28 IN BLOCK 1 OF 'THE PALM BEACH FARMS CO. PLAT NO. 9', AS RECORDED IN PLAT BOOK 5 AT PAGE 58, BOTH OF THE PUBLIC RECORDS OF PALM BEACH COUNTY, FLORIDA AND TOGETHER WITH A SUBDIVISION OF THAT PORTION OF THE UNPLATTED LANDS IN THE NORTHEAST ONE-QUARTER LYING SOUTH OF OKEECHOBEE BOULEVARD AND WEST OF FLORIDA'S TURNPIKE, PALM BEACH COUNTY, FLORIDA SITUATE, LYING AND BEING IN SECTION 27, TOWNSHIP 43 SOUTH, RANGE 42 EAST



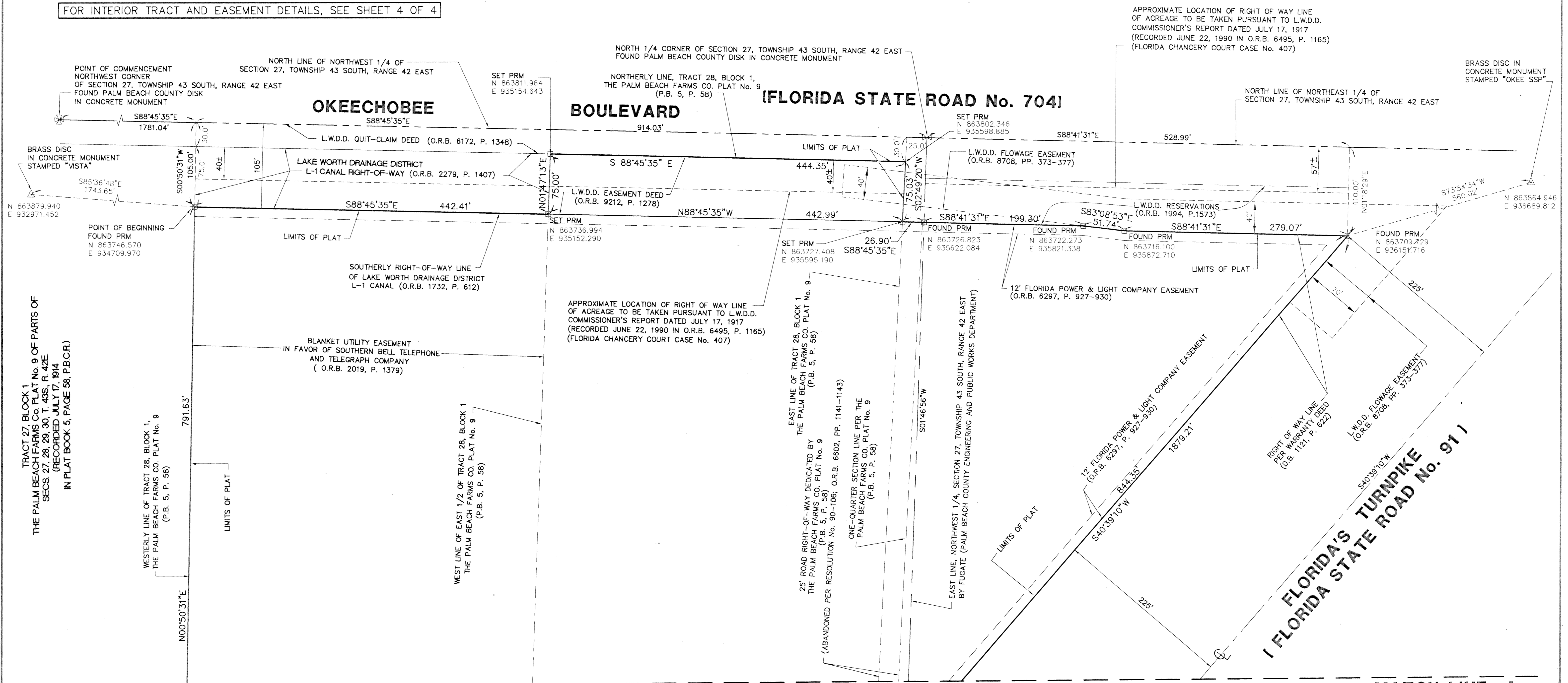
**LEGEND:**

- L.W.D.D. - LAKE WORTH DRAINAGE DISTRICT
- P.B.C.R. - PALM BEACH COUNTY RECORDS
- O.R.B. - OFFICIAL RECORDS BOOK
- D.B. - DEED BOOK
- P.B. - PLAT BOOK
- P. - PAGE
- ⊙ - CENTERLINE
- N - NORTHING
- E - EASTING
- PRM - DENOTES PERMANENT REFERENCE MONUMENT (P.R.M.)

FOR INTERIOR TRACT AND EASEMENT DETAILS, SEE SHEET 4 OF 4

IN 4 SHEETS  
 PREPARED BY:  
**PBSJ**  
**POST, BUCKLEY, SCHUH & JERNIGAN, INC.**  
 FLORIDA CERTIFICATE OF AUTHORIZATION NUMBER LB 24  
 2001 N.W. 107th AVENUE  
 MIAMI, FLORIDA 33172-2507  
 (305) 592-7275  
 JULY 1998      SCALE AS SHOWN      SHEET 2 OF 4 SHEETS

STATE OF FLORIDA )  
 COUNTY OF PALM BEACH ) SS  
 THIS PLAT WAS FILED FOR RECORD  
 AT \_\_\_\_\_ THIS \_\_\_\_\_  
 DAY OF \_\_\_\_\_, 1998  
 AND DULY RECORDED IN PLAT BOOK  
 THROUGH \_\_\_\_\_  
 ON PAGES \_\_\_\_\_  
 DOROTHY H. MILKEN  
 CLERK OF THE CIRCUIT COURT  
 BY: \_\_\_\_\_  
 DEPUTY CLERK



TRACT 27, BLOCK 1  
 THE PALM BEACH FARMS CO. PLAT No. 9 OF PARTS OF  
 SECS. 27, 28, 29, 30, T. 43S., R. 42E.  
 (RECORDED JULY 17, 1914  
 IN PLAT BOOK 5, PAGE 58, P.B.C.R.)

SUBDIVISION: Autonation of Palm  
 BOOK: 82  
 PAGE: 88  
 FLOOD MAP # 1514  
 ROAD # 31  
 ZONING: MUPD  
 SE 95-22  
 ZIP CODE: 33417  
 PREP NAME: Autonation of Palm

**MATCH LINE A**  
 SEE SHEET 3 OF 4

**MATCH LINE A**  
 SEE SHEET 3 OF 4

MULTIPLAN 7/27/98 20038 04 1317