

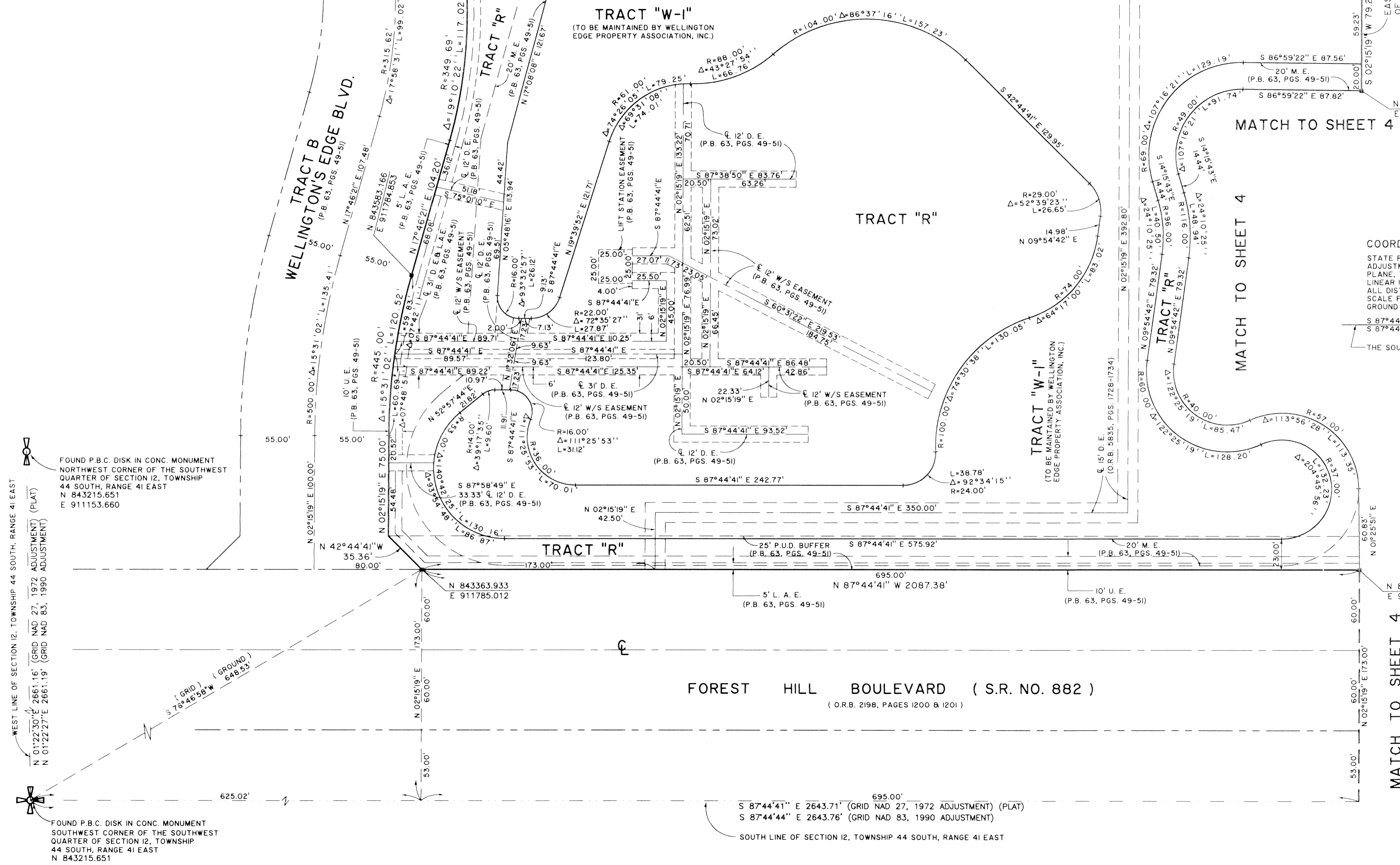
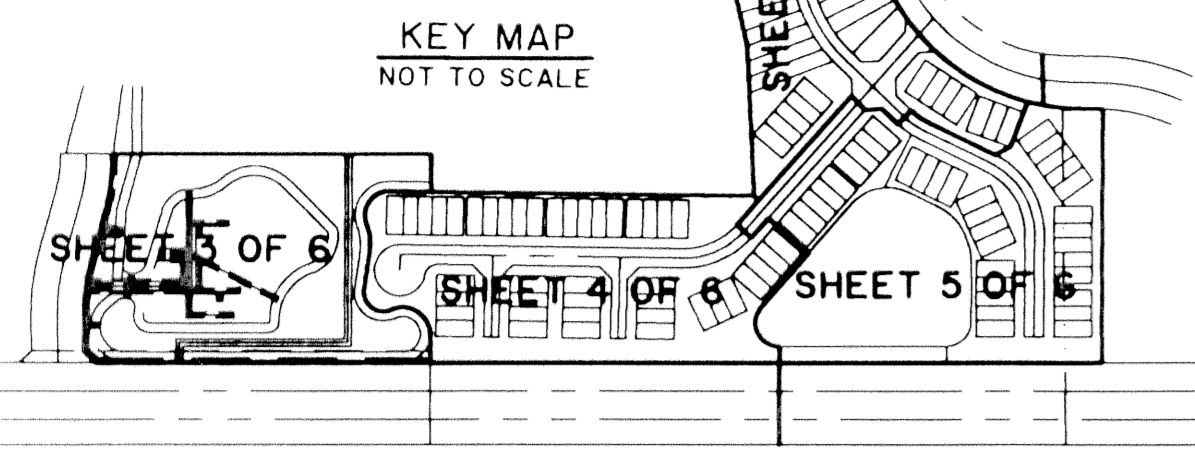
# WELLINGTON'S EDGE PARCEL 78 - PHASE 2, A P.U.D.

BEING THE REPLAT OF TRACTS A AND C AND A PORTION OF TRACT D, WELLINGTON'S EDGE PLAT NO. 1 AS RECORDED IN PLAT BOOK 63, PAGES 49 THRU 51, PUBLIC RECORDS OF PALM BEACH COUNTY, FLORIDA AND THE REPLAT OF A PORTION OF BLOCK 18, PALM BEACH FARMS COMPANY PLAT NO. 3, AS RECORDED IN PLAT BOOK 2, PAGES 45 THROUGH 54, PUBLIC RECORDS OF PALM BEACH COUNTY, FLORIDA AND A PORTION OF SECTION 12, TOWNSHIP 44 SOUTH, RANGE 41 EAST, VILLAGE OF WELLINGTON, PALM BEACH COUNTY, FLORIDA.

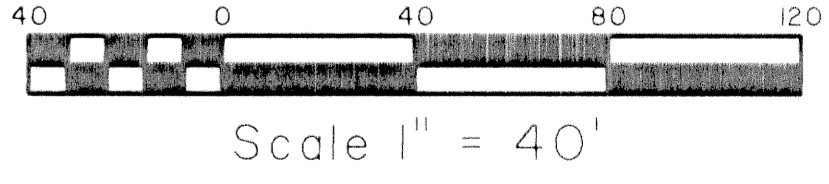
SHEET 3 OF 6

JULY, 1997

STATE OF FLORIDA  
 COUNTY OF PALM BEACH  
 THIS PLAT WAS FILED FOR RECORD AT \_\_\_\_\_  
 M. THIS DAY OF \_\_\_\_\_ 19\_\_\_\_  
 AND DULY RECORDED IN PLAT BOOK NO. \_\_\_\_\_  
 ON PAGE \_\_\_\_\_  
 DOROTHY H. WILKEN, CLERK OF THE CIRCUIT COURT  
 BY \_\_\_\_\_ U.C.



**COORDINATE NOTE:**  
 STATE PLANE COORDINATES SHOWN ARE GRID DATUM, NAD 83 1990 ADJUSTMENT, FLORIDA EAST ZONE, COORDINATE SYSTEM 1983 STATE PLANE, TRANSVERSE MERCATOR PROJECTION  
 LINEAR UNIT = US SURVEY FEET  
 ALL DISTANCES ARE GROUND  
 SCALE FACTOR = 1.0000170  
 GROUND DISTANCE X SCALE FACTOR = GRID DISTANCE  
 S 87°44'41" (PLAT BEARING) 00°00'03" COUNTERCLOCKWISE ROTATION  
 S 87°44'44" (GRID BEARING) PLAT TO GRID  
 THE SOUTH LINE OF SECTION 12, TOWNSHIP 44 SOUTH, RANGE 41 EAST.



SUBDIVISION # Wellington's Edge Parcel 78 Phase 2  
 BOOK 83 PAGE 70  
 FLOOD MAP # 1008  
 ZONING RTS/SE  
 QUAD # 68  
 SE 86-141  
 ZIP CODE 33414  
 PUD NAME Village of Wellington

TAZ 1007

**Landmark Surveying & Mapping Inc.**  
 1850 Forest Hill Boulevard  
 Ph. (561) 433-5405 Suite 100 W.P.B. Florida

**WELLINGTON'S EDGE  
 PARCEL 78 - PHASE 2, A P.U.D.**