

Fox Properties Plat

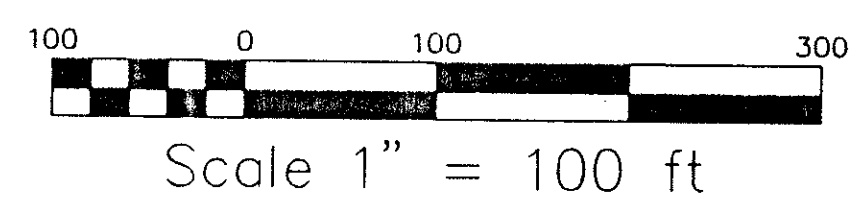
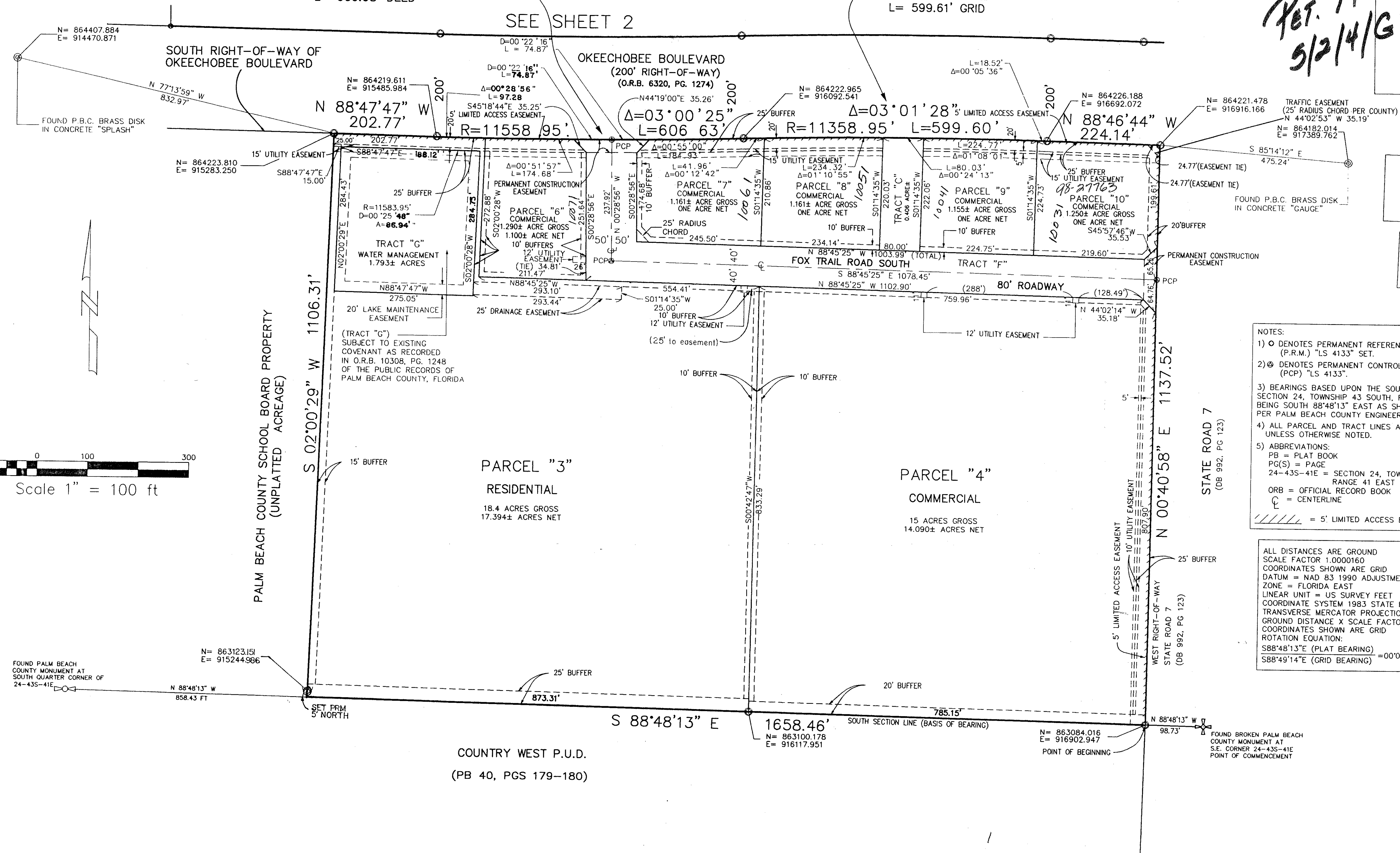
LYING IN SECTION 24, TOWNSHIP 43 SOUTH, RANGE 41 EAST
PALM BEACH COUNTY, FLORIDA

APRIL 1998
SHEET 3 OF 3

R= 11559.16' GRID AND DEED
L= 606.64' GRID
L= 606.68' DEED

R= 11359.16' GRID AND DEED
L= 599.59' DEED
L= 599.61' GRID

*RET. 74-81
5/2/4/G*



- NOTES:
- 1) \odot DENOTES PERMANENT REFERENCE MONUMENT (P.R.M.) "LS 4133" SET.
 - 2) \oplus DENOTES PERMANENT CONTROL POINT (PCP) "LS 4133".
 - 3) BEARINGS BASED UPON THE SOUTH LINE OF SECTION 24, TOWNSHIP 43 SOUTH, RANGE 41 EAST BEING SOUTH 88°48'13" EAST AS SHOWN HEREON, PER PALM BEACH COUNTY ENGINEERING DEPARTMENT.
 - 4) ALL PARCEL AND TRACT LINES ARE NON-RADIAL UNLESS OTHERWISE NOTED.
 - 5) ABBREVIATIONS:
PB = PLAT BOOK
PG(S) = PAGE
24-43S-41E = SECTION 24, TOWNSHIP 43 SOUTH RANGE 41 EAST
ORB = OFFICIAL RECORD BOOK
C = CENTERLINE
//// = 5' LIMITED ACCESS EASEMENT

ALL DISTANCES ARE GROUND
SCALE FACTOR 1.0000160
COORDINATES SHOWN ARE GRID
DATUM = NAD 83 1990 ADJUSTMENT
ZONE = FLORIDA EAST
LINEAR UNIT = US SURVEY FEET
COORDINATE SYSTEM 1983 STATE PLANE
TRANSVERSE MERCATOR PROJECTION
GROUND DISTANCE X SCALE FACTOR = GRID
COORDINATES SHOWN ARE GRID
ROTATION EQUATION:
S88°48'13"E (PLAT BEARING) = 00°01'01" COUNTER
S88°49'14"E (GRID BEARING) = 00°01'01" CLOCKWISE PLAT TO GRID

FOUND PALM BEACH COUNTY MONUMENT AT SOUTH QUARTER CORNER OF 24-43S-41E
N= 863123.151
E= 915244.986

FOUND BROKEN PALM BEACH COUNTY MONUMENT AT S.E. CORNER 24-43S-41E POINT OF COMMENCEMENT
N= 863084.016
E= 916902.947
POINT OF BEGINNING

THIS INSTRUMENT WAS PREPARED BY ROBERT P. BLASZYK, PSM, IN THE OFFICES OF

Messler & Associates
CONSULTING ENGINEERS
11211 Prosperity Farms Road, Suite C 301, Palm Beach Gardens, Florida 33410
Phone (561) 627-2226 Fax (561) 624-1569

NOTICE: THIS PLAT, AS RECORDED IN ITS GRAPHIC FORM, IS THE OFFICIAL DEPICTION OF THE SUBDIVIDED LANDS DESCRIBED HEREIN AND WILL IN NO CIRCUMSTANCES BE SUPPLANTED IN AUTHORITY BY ANY OTHER GRAPHIC OR DIGITAL FORM OF THIS PLAT. THERE MAY BE ADDITIONAL RESTRICTIONS THAT ARE NOT RECORDED ON THIS PLAT THAT MAY BE FOUND IN THE PUBLIC RECORDS OF PALM BEACH COUNTY.

PROJ. NO. 96-054P
PLAT 4/09/98
SHT 3 OF 3
File name: C:\EP\DWG\FORSE.DWG

SECTION 24 Fox Properties
BOOK 83 PAGE 67
FLOOD MAP # 506
ZONING MUPD
SF 74-81
ZIP CODE 33410
PUD NAME Fox Property

TAP 804,1063

0703-001

83/67