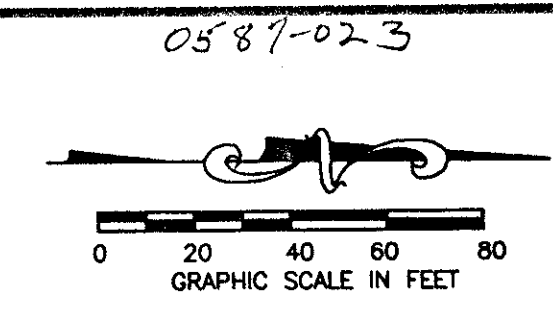


WINSTON TRAILS PARCEL FOURTEEN

PART OF WINSTON TRAILS P.U.D.
SITUATE IN SECTION 2, TOWNSHIP 45 SOUTH, RANGE 42 EAST
PALM BEACH COUNTY, FLORIDA
APRIL, 1998 SHEET 3 OF 5

FOUND PALM BEACH
COUNTY BRASS DISK
N 820030.0890
E 937949.6430



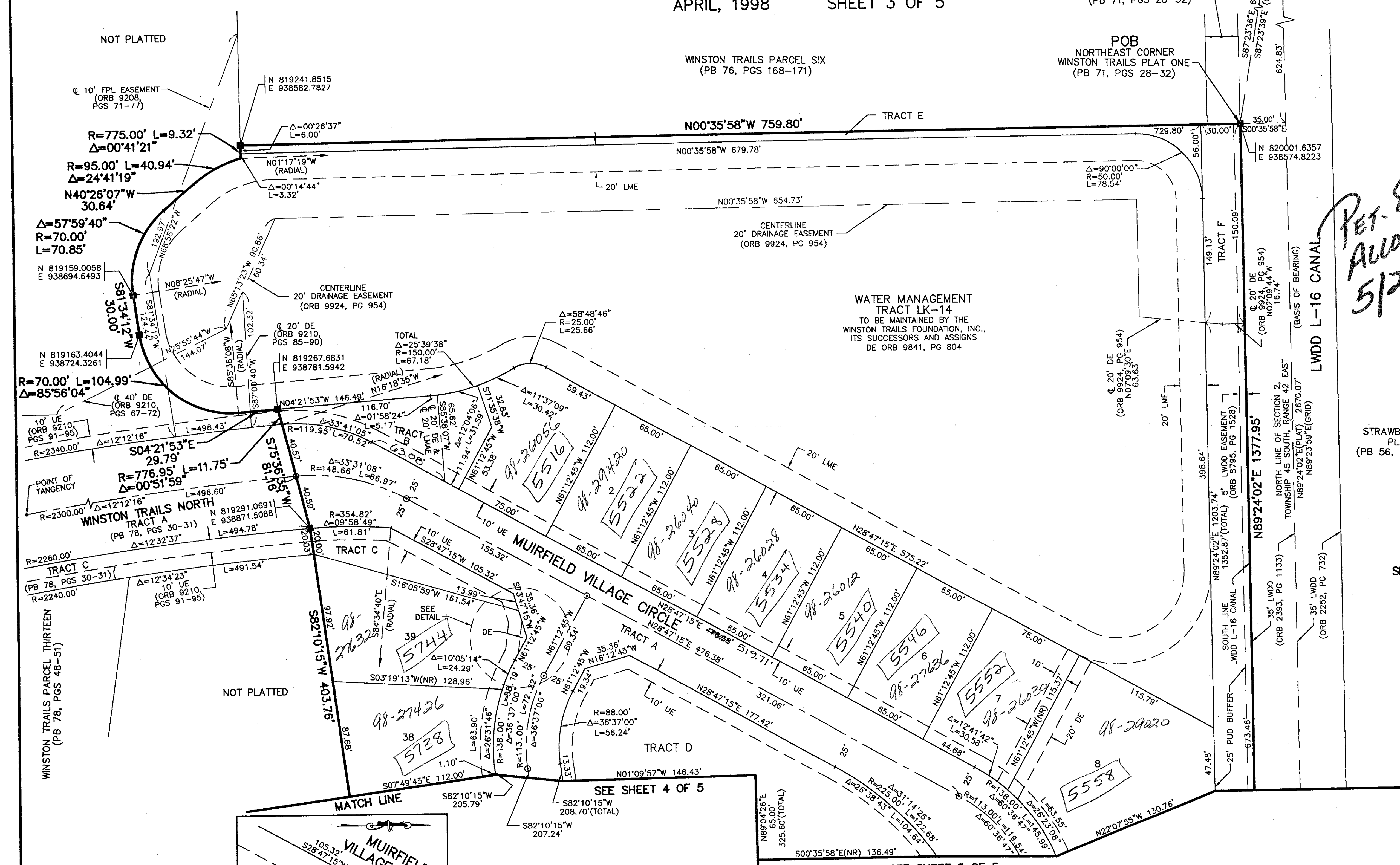
192

STATE OF FLORIDA
COUNTY OF PALM BEACH

THIS PLAT WAS FILED FOR
RECORD _____ DAY OF _____
AD, 1998 AND DULY RECORDED
IN PLAT BOOK _____ ON PAGES
_____ AND _____

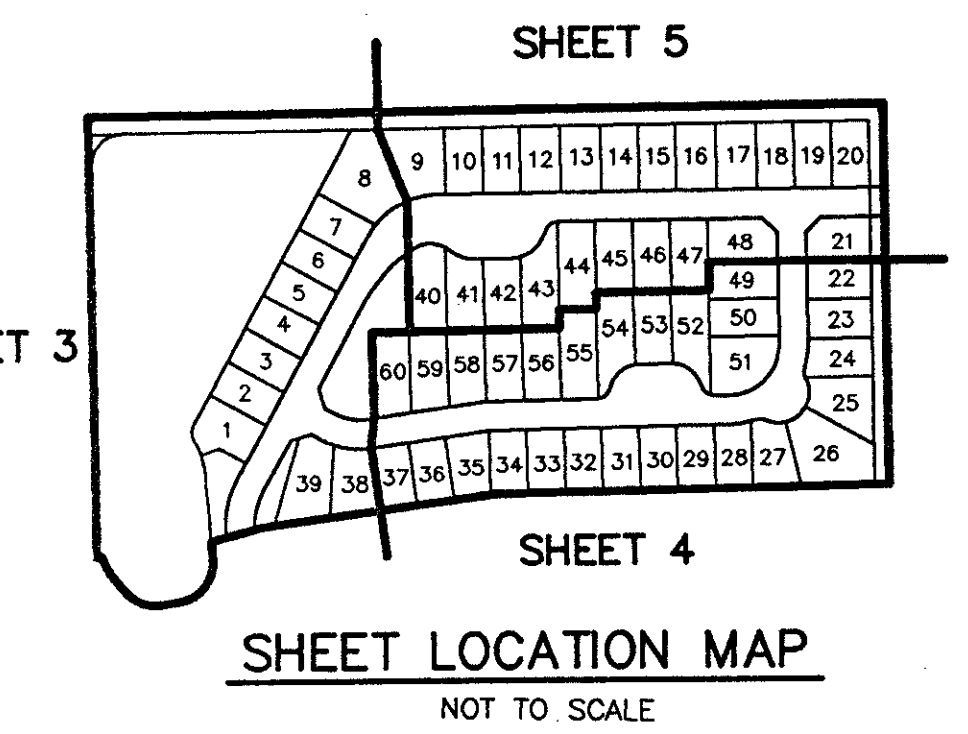
DOROTHY H. WILKEN, CLERK
BY: _____, D.C.

CIRCUIT COURT SEAL



- LEGEND**
- A ARC LENGTH
 - B ACCESS AND MAINTENANCE EASEMENT
 - C BUFFER EASEMENT
 - D CENTRAL (DELTA) ANGLE
 - E DRAINAGE EASEMENT
 - F FLORIDA POWER & LIGHT
 - G LIMITED ACCESS EASEMENT
 - H LAKE MAINTENANCE EASEMENT
 - I LAKE MAINTENANCE ACCESS EASEMENT
 - J POINT OF BEGINNING
 - K POINT OF COMMENCEMENT
 - L PLANNED UNIT OF DEVELOPMENT
 - M NON-RADIAL
 - N OFFICIAL RECORD BOOK
 - O PLAT BOOK
 - P PAGE(S)
 - Q RADIUS
 - R TYPICAL
 - S UTILITY EASEMENT
 - T PERMANENT REFERENCE MONUMENT
 - U FOUND PLS# 4763
 - V PERMANENT REFERENCE MONUMENT
 - W SET PLS# 4763
 - X PERMANENT CONTROL POINT
 - Y SET PLS# 4763
 - Z CENTERLINE

RET-87-112
Assoc. #0001
5/2/2/I



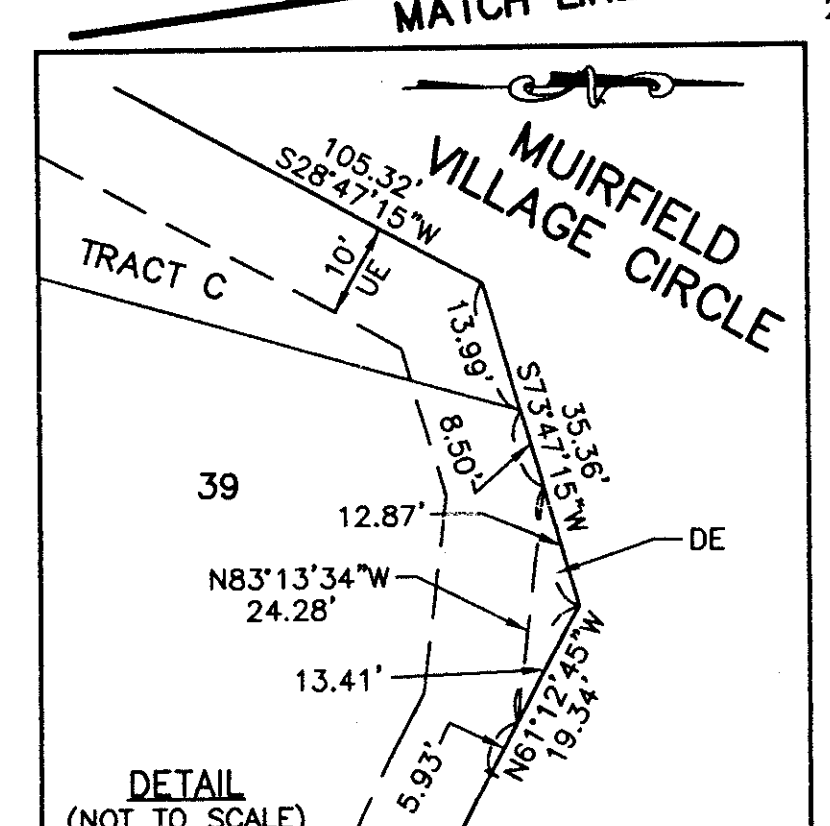
ALL DISTANCES ARE GROUND
SCALE FACTOR = 1.0000338

N89°23'59"E (Grid) 00°00'03" Bearing
N89°24'02"E (Plat) = Counter Clockwise Rotation (Plat to Grid)

North line of Section 2
Township 45 South, Range 42 East

COORDINATES SHOWN ARE GRID
DATUM = NAD 83 1990 ADJUSTMENT
ZONE = FLORIDA EAST
LINEAR UNIT = US SURVEY FEET
COORDINATE SYSTEM 1983 STATE PLANE
TRANSVERSE MERCATOR PROJECTION
GROUND DISTANCE X SCALE FACTOR = GRID

SUBDIVISION * Winston Trails
BOOK 82 PAGE 192
FLOOD ZONE B FLOOD MAP #1756
QUAD # 34 ZONING RS1JE
RE 87-112 ZIP CODE 33443
PUD NAME Winston Trails



THIS INSTRUMENT WAS PREPARED BY MARY HANNA CLODFELTER, P.S.M. IN THE OFFICES OF MOCK, ROOS & ASSOCIATES, INC., 5720 CORPORATE WAY, WEST PALM BEACH, FLORIDA 33407.

SCALE: 1"=40'	MOCK • ROOS ENGINEERS SURVEYORS PLANNERS
P.A. NO.: 95200.02	
DATE: DECEMBER 1997	
DRAWING NO.: 45-42-02-99	

**WINSTON TRAILS
PARCEL FOURTEEN**

PART OF WINSTON TRAILS P.U.D.
SITUATE IN SECTION 2, TOWNSHIP 45 SOUTH,
RANGE 42 EAST
PALM BEACH COUNTY, FLORIDA

0587-023

82/192

REV: 04-22-98
CAD FILE:
MUSSWINT/WINTRP27

SHEET 3 OF 5