

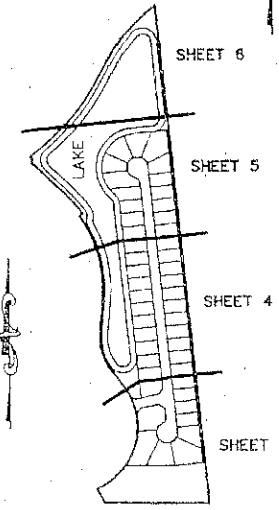
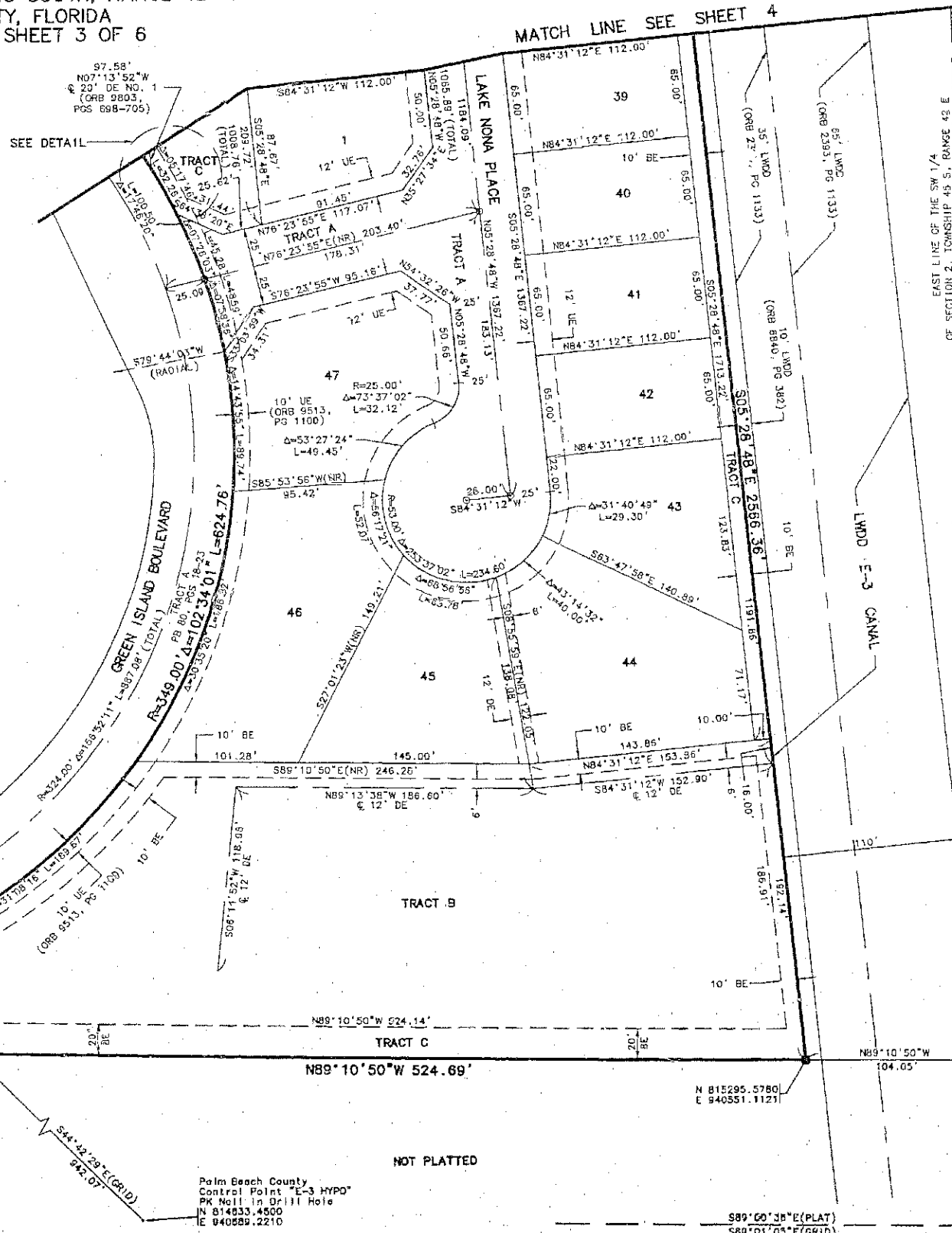
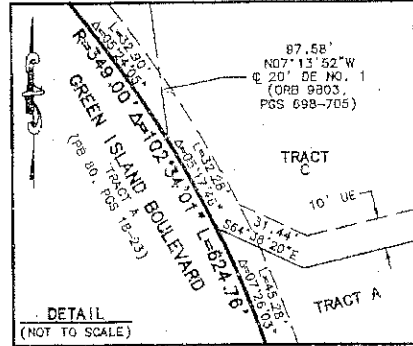
WINSTON TRAILS PARCEL ELEVEN PHASE II

PART OF WINSTON TRAILS P.U.D.
SITUATE IN SECTION 2, TOWNSHIP 45 SOUTH, RANGE 42 EAST
PALM BEACH COUNTY, FLORIDA
NOVEMBER, 1997 SHEET 3 OF 6

0587-024

186

STATE OF FLORIDA
COUNTY OF PALM BEACH
THIS PLAT WAS FILED FOR
RECORD
THIS DAY OF _____
AD, 1997 AND DULY RECORDED
IN PLAT BOOK _____ ON PAGE
_____ AND _____
DOROTHY H. WILKEN, CLERK
BY _____ D.C.
CIRCUIT COURT SEAL



SHEET INDEX MAP
NOT TO SCALE

- LEGEND**
- L ARC LENGTH
 - BE BUFFER EASEMENT
 - Δ CENTRAL (DELTA) ANGLE
 - LD DRAINAGE EASEMENT
 - LDWD LAKE WORTH DRAINAGE DISTRICT
 - LAE LIMITED ACCESS EASEMENT
 - LME LAKE MAINTENANCE EASEMENT
 - ORB OFFICIAL RECORD BOOK
 - PG PLAT BOOK
 - PG(S) PAGE(S)
 - R RADIUS
 - LMAE LAKE MAINTENANCE ACCESS EASEMENT
 - UE UTILITY EASEMENT
 - ⊙ PERMANENT CONTROL POINT
 - SET PS# 4763
 - ⊠ 4x4 CONCRETE PERMANENT REFERENCE MONUMENT SET PS# 4763
 - ⊡ 4x4 CONCRETE PERMANENT REFERENCE MONUMENT FOUND PS# 4763
 - C CENTERLINE
 - (NR) NON-RADIAL

NOTES:

1. THE COORDINATES SHOWN HEREON ARE STATE PLANE GRID COORDINATES ACCORDING TO THE TRANSVERSE MERCATOR PROJECTION OF THE FLORIDA EAST ZONE, N.A.D. 83, PER THE 1990 ADJUSTMENT.
2. THE LINEAR DIMENSIONS SHOWN HEREON ARE GROUND DISTANCES IN U.S. FEET AND DECIMAL PARTS THEREOF.
3. THE GROUND DISTANCE TO GRID DISTANCE SCALE FACTOR IS 1.0000488 (GROUND DISTANCE X SCALE FACTOR = GRID DISTANCE).
4. ALL LINES WHICH INTERSECT CURVES ARE RADIAL TO THOSE CURVES UNLESS OTHERWISE NOTED.

Permanent Reference Monument (PSM #4763)
Southeast corner of WINSTON TRAILS PARCEL ELEVEN
N 814752.5324
E 939995.1787

Palm Beach County Control Point "E-3 HYPO"
PK Nail in Drill Hole
N 814633.4500
E 940669.2210

S89°00'36"E (Plat) 00°00'29" Bearing
S89°01'05"E (Grid) Counterclockwise
Rotation
(Plat to Grid)

South line of the Southwest 1/4 Section 02-45-42

THIS INSTRUMENT WAS PREPARED BY MARY HANNA CLODFELTER, P.S.M. IN THE OFFICES OF MOCK, ROOS & ASSOCIATES, INC., 5720 CORPORATE WAY, WEST PALM BEACH, FLORIDA 33407.

SCALE:	1" = 40'
P.L. NO.:	27011-00
DATE:	NOVEMBER 1997
DRAWING NO.:	45-42-02-00

MOCK ROOS
ENGINEERS ARCHITECTS PLANNERS
5720 Corporate Way, West Palm Beach, Florida 33407
(561) 643-3113, fax 478-7248

WINSTON TRAILS
PARCEL ELEVEN PHASE II
PART OF WINSTON TRAILS P.U.D.
SITUATE IN SECTION 2, TOWNSHIP 45 SOUTH,
RANGE 42 EAST
PALM BEACH COUNTY, FLORIDA

WINTRP21.dwg 6-1-98 12:31:36 pm EST

REVISION: 01-02-98
CAD FILE:
AUSMNT/WINTRP21

Palm Beach County
Control Point "E-3 HYPO"
PK Nail in Drill Hole
N 814833.4500
E 940889.2210

S89°00'36"E (PLAT)
S89°01'05"E (GRID)

NOT PLATTED

NOT PLATTED