

# IBIS COMMERCIAL PLAT

A PORTION OF SECTIONS 13 AND 24, TOWNSHIP 42 SOUTH, RANGE 41 EAST,  
CITY OF WEST PALM BEACH, PALM BEACH COUNTY, FLORIDA

PREPARED BY  
DAVID P. LINDLEY  
OF  
CAULFIELD and WHEELER, INC.  
ENGINEERS - PLANNERS - SURVEYORS  
7301-A WEST PALMETTO PARK ROAD, SUITE 100A  
BOCA RATON, FLORIDA 33433 - (561)392-1991  
MARCH - 1997

139

STATE OF FLORIDA  
COUNTY OF PALM BEACH  
THIS PLAT WAS FILED FOR  
RECORD AT \_\_\_\_\_ M.  
THIS \_\_\_\_\_ DAY OF \_\_\_\_\_  
A.D. 1998 AND DULY RECORDED  
IN PLAT BOOK \_\_\_\_\_ ON  
PAGES \_\_\_\_\_ AND \_\_\_\_\_  
DOROTHY H. WILKEN  
CLERK CIRCUIT COURT

BY: \_\_\_\_\_  
DEPUTY CLERK

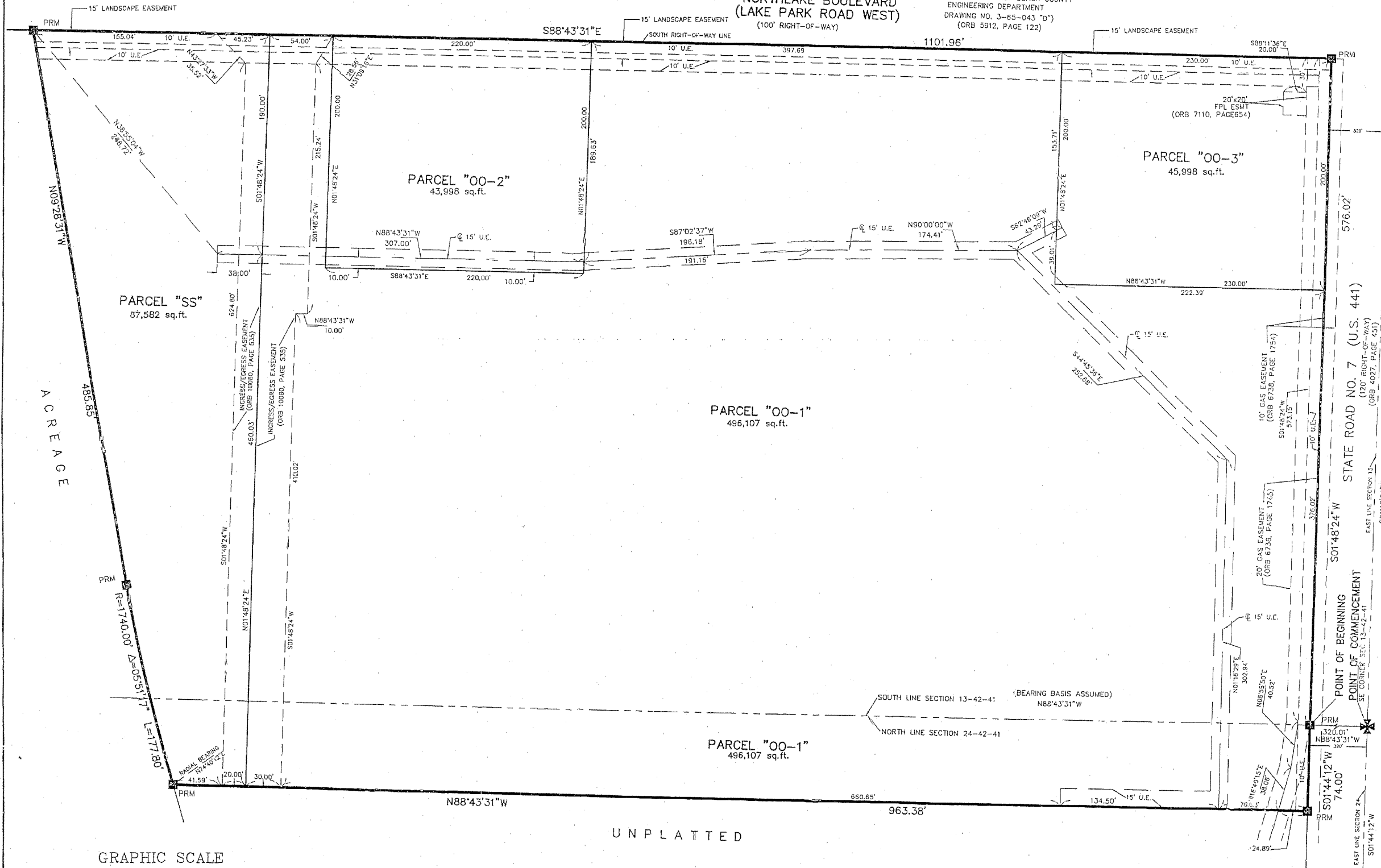
SHEET 2 OF 2

UNPLATTED

NORTH

NORTHLAKE BOULEVARD  
(LAKE PARK ROAD WEST)  
(100' RIGHT-OF-WAY)

(REFERENCE: PALM BEACH COUNTY  
ENGINEERING DEPARTMENT  
DRAWING NO. J-65-043 "0")  
(ORB 5912, PAGE 122)



GRAPHIC SCALE

