

THE VINEYARDS

BEING A REPLAT OF TRACTS 11, 12 AND 13, BLOCK 81, PALM BEACH FARMS COMPANY PLAT NO. 3, AS RECORDED IN PLAT BOOK 2, PAGES 45-54, PUBLIC RECORDS OF PALM BEACH COUNTY, FLORIDA, LYING IN SECTION 30, TOWNSHIP 47 SOUTH, RANGE 42 EAST, PALM BEACH COUNTY, FLORIDA

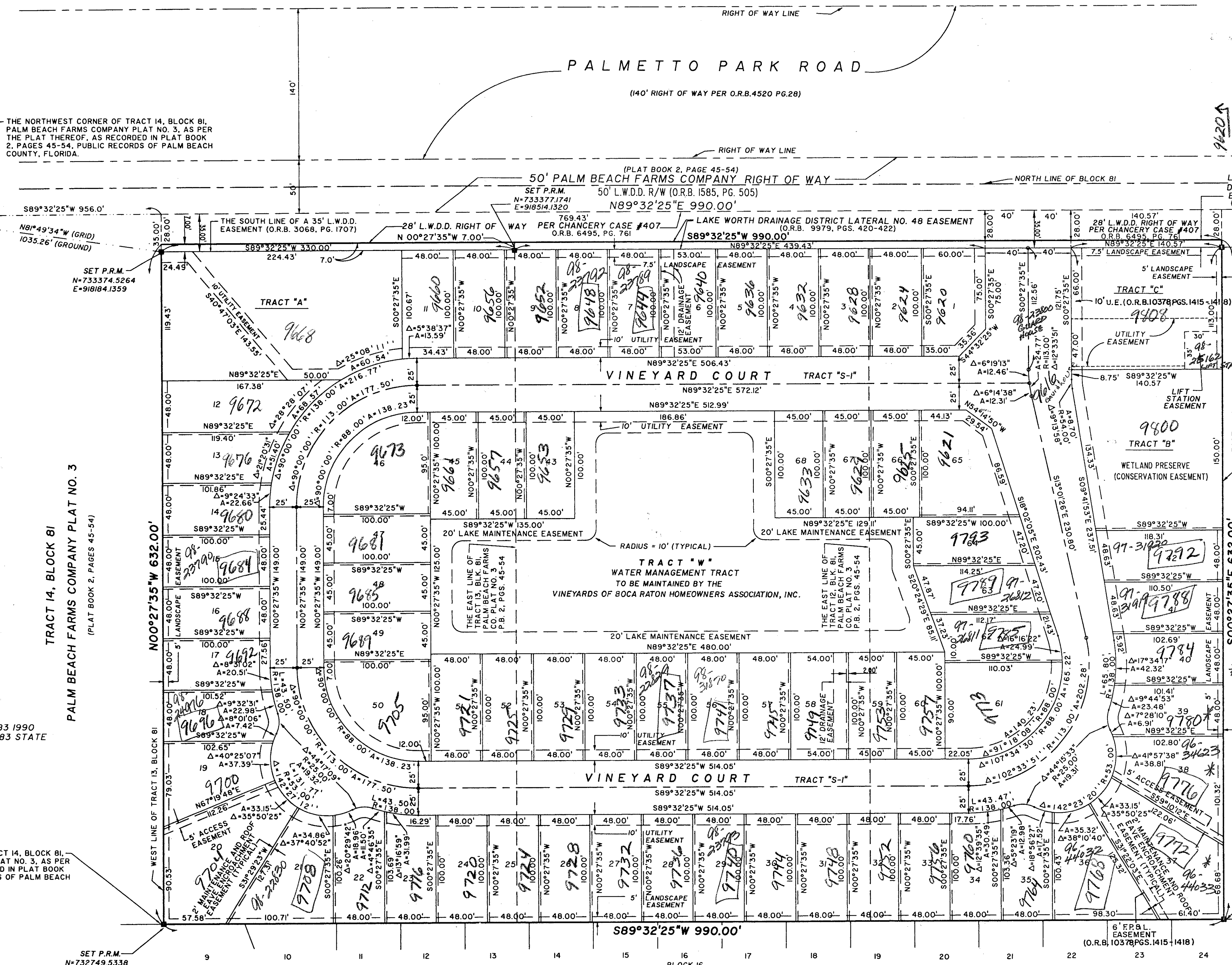
SHEET 3 OF 3

0708-001

137

PALMETTO PARK WOODS
(PLAT BOOK 62, PAGE 97)

STATE OF FLORIDA
COUNTY OF PALM BEACH
THIS PLAT WAS FILED FOR RECORD AT _____
M, THIS _____ DAY OF _____ 19____
AND DULY RECORDED IN PLAT BOOK NO. _____
ON PAGE _____
DOROTHY H. WILKEN, CLERK OF THE CIRCUIT COURT
BY _____ D.C.



PET. 96-8
CURRENT
5/3/31M

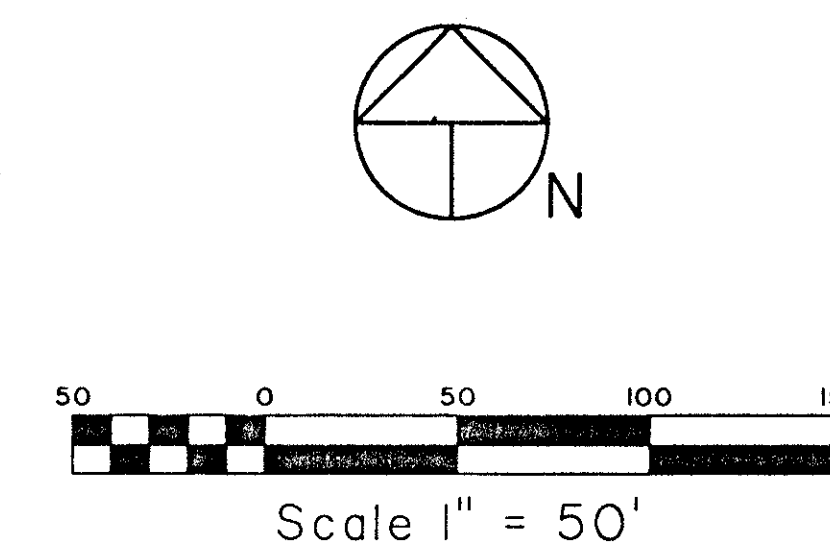
* Lots 38, 39
+ 40 - MAX
1 STORY PER
CONDITION
A-4

82/137

FOUND PALM BEACH COUNTY
BRASS DISC "HAMY"
N=733503.2870
E=914489.1420

FOUND PALM BEACH COUNTY
BRASS DISC "BUDS"
N=733521.8620
E=917158.3820

THE NORTHWEST CORNER OF TRACT 14, BLOCK 81,
PALM BEACH FARMS COMPANY PLAT NO. 3, AS PER
THE PLAT THEREOF, AS RECORDED IN PLAT BOOK
2, PAGES 45-54, PUBLIC RECORDS OF PALM BEACH
COUNTY, FLORIDA.



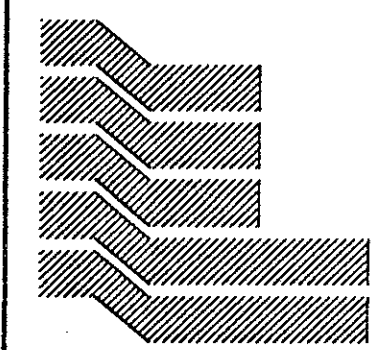
COORDINATE NOTE:
STATE PLANE COORDINATES SHOWN ARE GRID DATUM, NAD 83 1990
ADJUSTMENT, FLORIDA EAST ZONE, COORDINATE SYSTEM 1983 STATE
PLANE TRANSVERSE MERCATOR PROJECTION.
LINEAR UNIT = US SURVEY FEET
ALL DISTANCES ARE GROUND
SCALE FACTOR = 1.0000201
GROUND DISTANCE x SCALE FACTOR = GRID DISTANCE
BEARINGS SHOWN HEREON ARE GRID DATUM, NAD 83 1990
ADJUSTMENT.

THE SOUTHEAST CORNER OF TRACT 14, BLOCK 81,
PALM BEACH FARMS COMPANY PLAT NO. 3, AS PER
THE PLAT THEREOF, AS RECORDED IN PLAT BOOK
2, PAGES 45-54, PUBLIC RECORDS OF PALM BEACH
COUNTY, FLORIDA.

SET P.R.M.
N=732749.5338
E=918169.1505

SET P.R.M.
N=732757.4769
E=919179.1386

PLAT OF SANDALFOOT COVE SECTION FOUR
(PLAT BOOK 29, PAGE 241)



Landmark Surveying & Mapping Inc.
1850 Forest Hill Boulevard
L.B. 4396
Ph. (407) 433-5405 Suite 100 W.P.B. Florida

THE VINEYARDS

0708-001

11/2 788
PAGE 137
BLOCK 81 - 2408
TRACT 13
ZIP CODE 33463
Vineyards