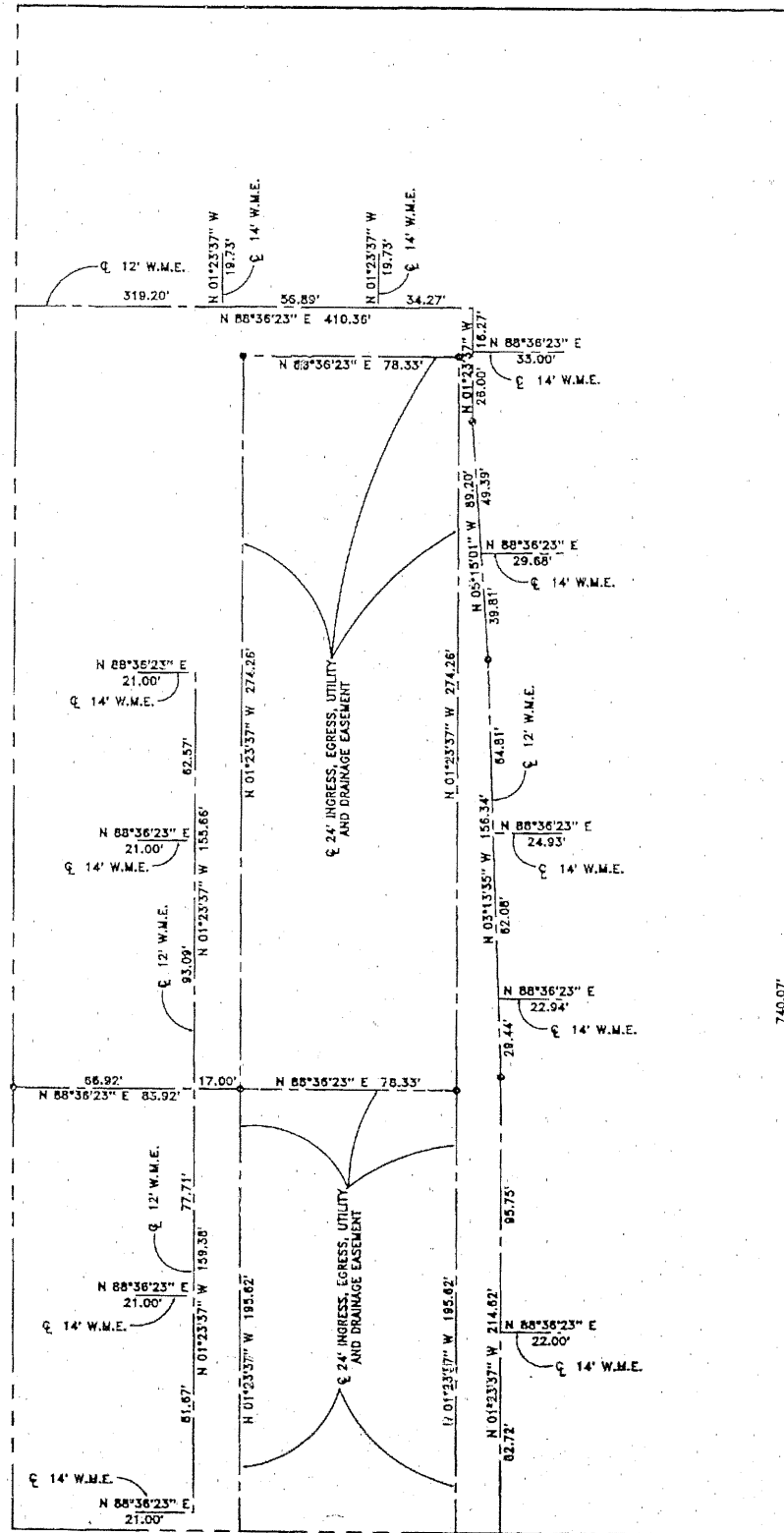


CITATION CLUB REPLAT
 BEING A REPLAT OF A PORTION OF CITATION CLUB AS RECORDED IN PLAT BOOK 76,
 PAGES 181 THROUGH 187, PUBLIC RECORDS OF PALM BEACH COUNTY, FLORIDA AND A
 PORTION OF SECTION 25, TOWNSHIP 46 SOUTH, RANGE 42 EAST, CITY OF DELRAY BEACH,
 PALM BEACH COUNTY, FLORIDA.
 SHEET 6 OF 8 SHEETS
 N 88°43'24" E 660.07' NOT PLATTED MAY, 1998

132

STATE OF FLORIDA
 COUNTY OF PALM BEACH
 This Plat was filed for record at _____
 M. This day of _____, 19____
 and duly recorded in Plat Book No. _____
 on Page _____
 Dorothy H. Wilken, Clerk of the Circuit Court
 By _____ D.C.



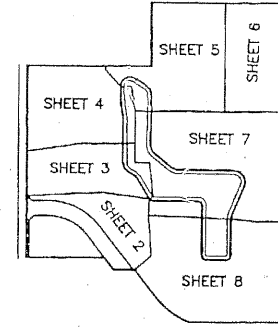
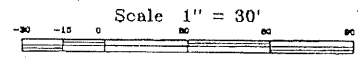
MATCH TO SHEET 5

MATCH TO SHEET 7

S 01°24'58" E 1682.52'

740.07'

HAMMOCK RESERVE
 (PLAT BOOK 80, PAGES 166 - 175)



KEY MAP
 NOT TO SCALE

	Landmark Surveying & Mapping Inc. 1850 FOREST HILL BOULEVARD PH. (561)433-5405 SUITE 100 W.P.B. FLORIDA
	CITATION CLUB REPLAT