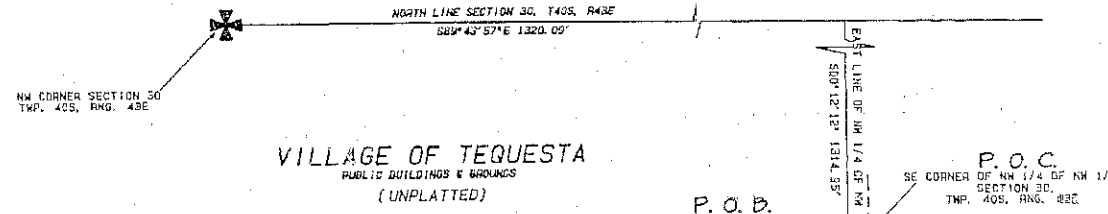
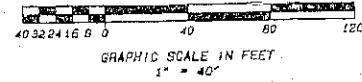


STERLING HOUSE OF TEQUESTA

LYING IN THE NORTHWEST QUARTER OF SECTION 30, TOWNSHIP 40 SOUTH,
RANGE 43 EAST, VILLAGE OF TEQUESTA, PALM BEACH COUNTY, FLORIDA

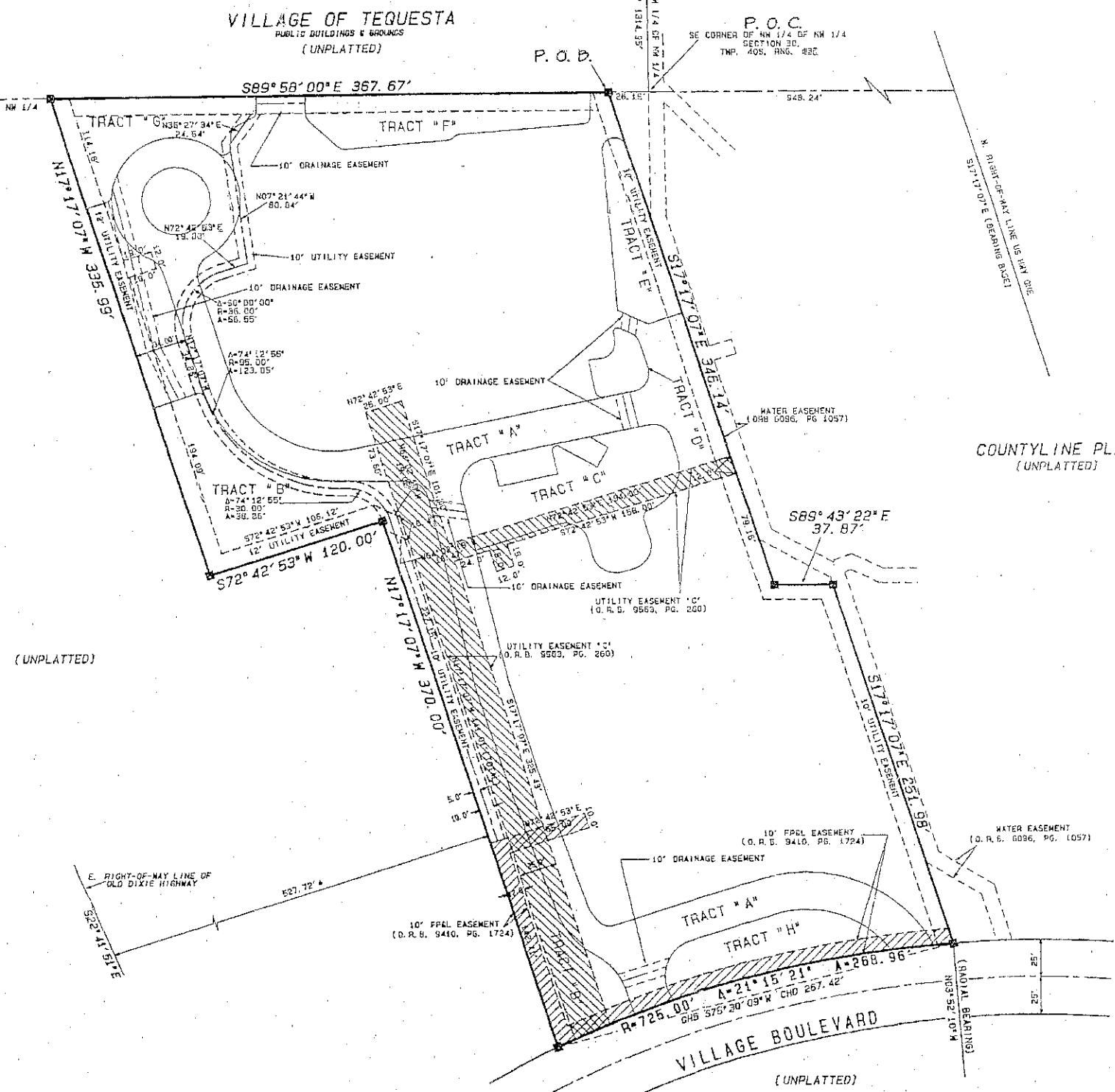
SHEET 2 OF 3
APRIL 1998

103



LEGEND

| | |
|----------------|--|
| P.O.B. | POINT OF BEGINNING |
| P.O.C. | POINT OF COMMENCEMENT |
| SET 4x4 | PERMANENT REFERENCE MONUMENT |
| R | RADIUS OF CURVE |
| A | CENTRAL ANGLE OF CURVE |
| L | ARC LENGTH OF CURVE |
| CHB | CHORD BEARING OF CURVE |
| CHD | CHORD DISTANCE OF CURVE |
| [Solid line] | UTILITY EASEMENTS DEDICATED ON THIS PLAT |
| [Hatched line] | EXISTING UTILITY EASEMENTS |



- SURVEYOR'S NOTES:**
- BUILDING SETBACK LINES SHALL CONFORM TO CURRENT VILLAGE OF TEQUESTA REQUIREMENTS.
 - NO BUILDINGS OF ANY KIND OF CONSTRUCTION SHALL BE PLACED ON UTILITY EASEMENTS. LANDSCAPING OF UTILITY EASEMENTS SHALL REQUIRE PRIOR APPROVAL OF THE VILLAGE OF TEQUESTA AND ALL UTILITIES OCCUPYING SAME.
 - BEARINGS SHOWN HEREON ARE BASED UPON THE WESTERLY RIGHT-OF-WAY LINE OF U.S. HIGHWAY NO. 1, BEING SOUTH 17°17'07" EAST.
 - ALL LOT LINES ARE NON-RADIAL UNLESS OTHERWISE NOTED.
 - THE VILLAGE OF TEQUESTA SHALL HAVE THE RIGHT, BUT NOT THE OBLIGATION, TO MAINTAIN ANY PORTION OF THE DRAINAGE SYSTEM ENCOMPASSED BY THIS PLAT WHICH IS ASSOCIATED WITH THE DRAINAGE OF THE SYSTEM, INCLUDING THE RIGHT TO UTILIZE FOR PROPER PURPOSES ANY AND ALL DRAINAGE, AND LAKE MAINTENANCE ACCESS EASEMENTS AND TRACTS ASSOCIATED WITH SAID DRAINAGE SYSTEM.
 - THERE MAY BE ADDITIONAL RESTRICTIONS THAT ARE NOT RECORDED ON THIS PLAT THAT MAY BE FOUND IN THE PUBLIC RECORDS OF PALM BEACH COUNTY, FLORIDA.
 - SEE SHEET 2 OF 3 FOR UTILITY EASEMENTS.
 - SEE SHEET 3 OF 3 FOR INGRESS & EGRESS TRACT *A*, STORM WATER MANAGEMENT TRACTS *B* THROUGH *H*, AND DRAINAGE EASEMENTS.

THIS INSTRUMENT WAS PREPARED BY DAN M. DAILEY, P.S.M.
DAILEY AND ASSOCIATES, INC., 112 N. U.S. HWY. ONE
TEQUESTA, FLORIDA 33469

DAILEY AND ASSOCIATES, INC.
SURVEYING & MAPPING
112 N. U.S. HIGHWAY NO. 1
TEQUESTA, FLORIDA 33469
PHONE: (561) 746-8424