

KEY MAP
NOT TO SCALE

ABERDEEN-PLAT NO. 26 REPLAT

A PORTION OF A PLANNED UNIT DEVELOPMENT
 LYING IN SECTIONS 15 AND 16, TOWNSHIP 45 SOUTH, RANGE 42 EAST,
 BEING A REPLAT OF A PORTION OF ABERDEEN-PLAT NO. 26 AS RECORDED IN
 PLAT BOOK 79, PAGES 2 THRU 7, PUBLIC RECORDS OF PALM BEACH COUNTY, FLORIDA.
 SHEET 4 OF 6
 OCTOBER, 1997

0270-032

ABERDEEN
 N 807488.009
 E 933764.534
 FND. PBCO CONC. MON.

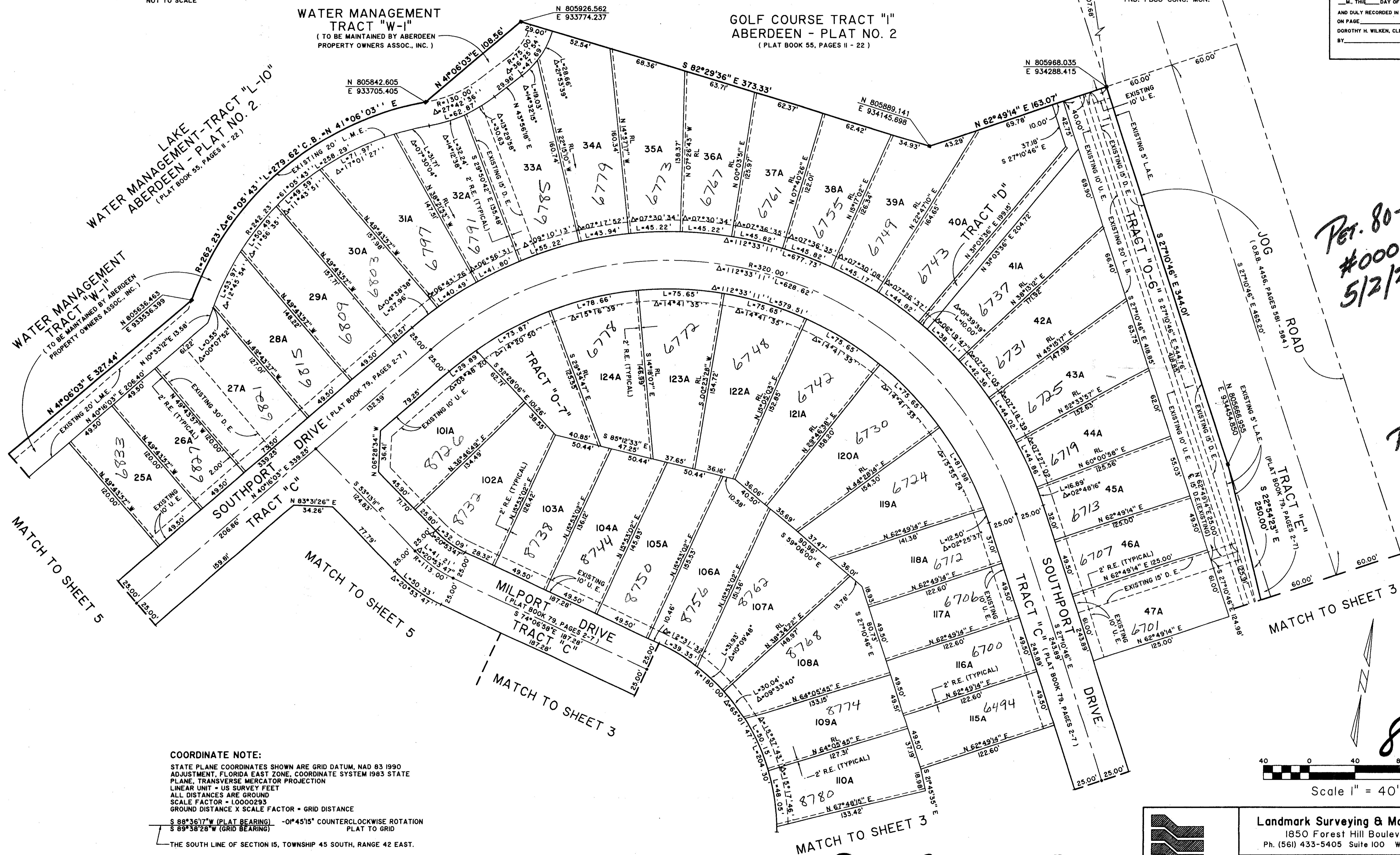
CIBA
 N 803977.959
 E 935030.827
 FND. PBCO CONC. MON.

97

STATE OF FLORIDA
 COUNTY OF PALM BEACH
 THIS PLAT WAS FILED FOR RECORD AT _____
 M. THE DAY OF _____ 19____
 ON PAGE _____
 AND DULY RECORDED IN PLAT BOOK NO. _____
 DOROTHY H. WILKEN, CLERK OF THE CIRCUIT COURT
 BY _____ D.C.

WATER MANAGEMENT TRACT "W-1"
 (TO BE MAINTAINED BY ABERDEEN PROPERTY OWNERS ASSOC., INC.)

GOLF COURSE TRACT "I"
 ABERDEEN - PLAT NO. 2
 (PLAT BOOK 55, PAGES 11 - 22)



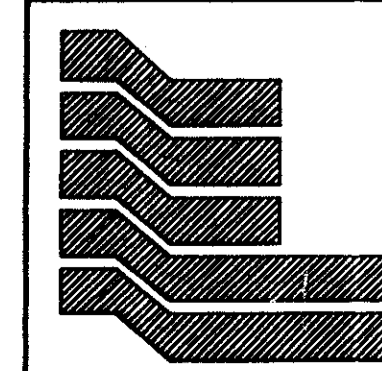
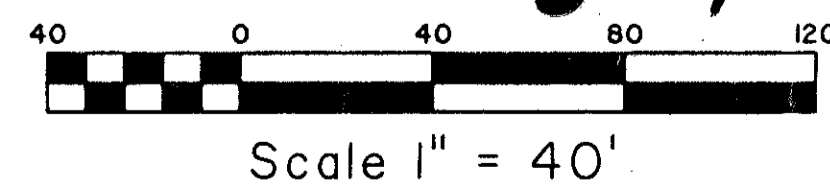
*Per. 80-153E
 #0001
 5/2/2/I*

Pool

8/2/97

COORDINATE NOTE:

STATE PLANE COORDINATES SHOWN ARE GRID DATUM, NAD 83 1990
 ADJUSTMENT, FLORIDA EAST ZONE, COORDINATE SYSTEM 1983 STATE
 PLANE, TRANSVERSE MERCATOR PROJECTION
 LINEAR UNIT = US SURVEY FEET
 ALL DISTANCES ARE GROUND
 SCALE FACTOR = 1.0000293
 GROUND DISTANCE X SCALE FACTOR = GRID DISTANCE
 S 88°36'17" W (PLAT BEARING) -0°45'15" COUNTERCLOCKWISE ROTATION
 S 89°38'28" W (GRID BEARING) PLAT TO GRID
 THE SOUTH LINE OF SECTION 15, TOWNSHIP 45 SOUTH, RANGE 42 EAST.



Landmark Surveying & Mapping Inc.
 1850 Forest Hill Boulevard
 Ph. (561) 433-5405 Suite 100 W.P.B. Florida

ABERDEEN-PLAT NO. 26 REPLAT

0270-032

Subdivision
 BOOK 02
 FLOOD MAP # 1854
 FLOOD ZONE 0
 ZONING FC
 ROAD # 49734
 ZIP CODE 33436
 SE 80-153
 FUD NAME Aberdeen
 T&E
 442