

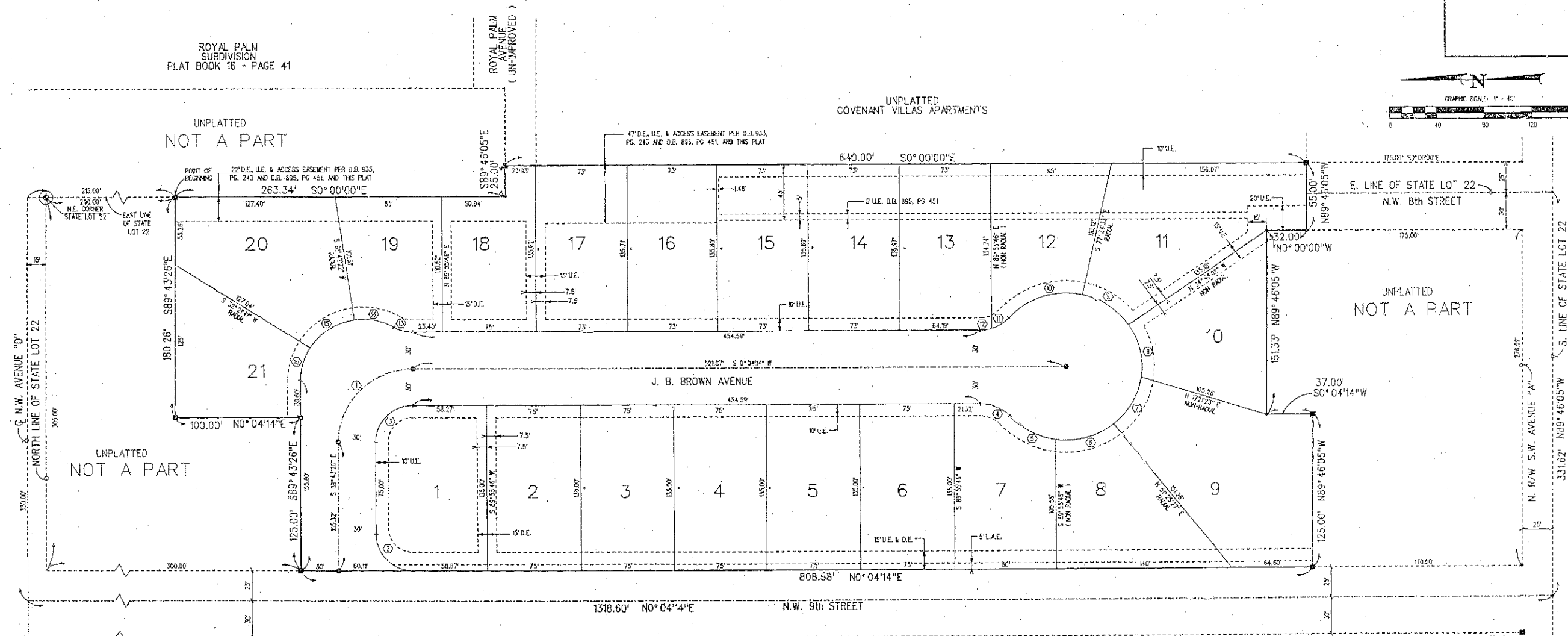
PLAT OF COVENANT GARDENS

A SUBDIVISION OF A PART OF STATE LOT 22
IN SECTION 31, TOWNSHIP 43 SOUTH, RANGE 37 EAST, BELLE GLADE
PALM BEACH COUNTY, FLORIDA

SHEET 2 OF 2

APRIL 1998

91



CURVE DATA			
CURVE	LENGTH	DELTA	RADIUS
1	94.03	89°47'40"	60.00
2	47.23	90°12'20"	30.00
3	47.02	89°47'40"	30.00
4	25.23	48°11'23"	30.00
5	42.11	40°12'52"	60.00
6	48.82	46°37'17"	60.00
7	45.03	43°00'00"	60.00
8	45.03	43°00'00"	60.00
9	45.03	43°00'00"	60.00
10	63.40	60°32'37"	60.00
11	16.29	31°06'33"	30.00
12	8.94	17°04'44"	30.00
13	15.59	29°46'51"	30.00
14	33.29	38°08'42"	60.00
15	43.06	49°20'40"	60.00
16	28.00	32°05'08"	50.00

LEGEND

L.A.E. DENOTES LIMITED ACCESS EASEMENT
 U.E. DENOTES UTILITY EASEMENT
 D.E. DENOTES DRAINAGE EASEMENT
 ● DENOTES P.R.M. SET (PSL)
 ○ DENOTES P.C.P. TO BE SET

NOTE:
 5 FT. UTILITY EASEMENT (U.E.) AS SHOWN ON
 LOTS 11 THRU 15 IS NOT SUBJECT TO THE
 BUILDING OR LANDSCAPING RESTRICTION AS
 SHOWN IN SURVEYOR'S NOTE No. 3 ON SHEET 1 of 2.

MOSELY ADDITION
PLAT BOOK 26 - PAGE 24

Atlantic Land Design
RICHARD D. ADAMS, JR.
 Professional Surveyor and Mapper
WEYANT & ASSOCIATES
 CONSULTING ENGINEERS

JOB No. 92386PTZ