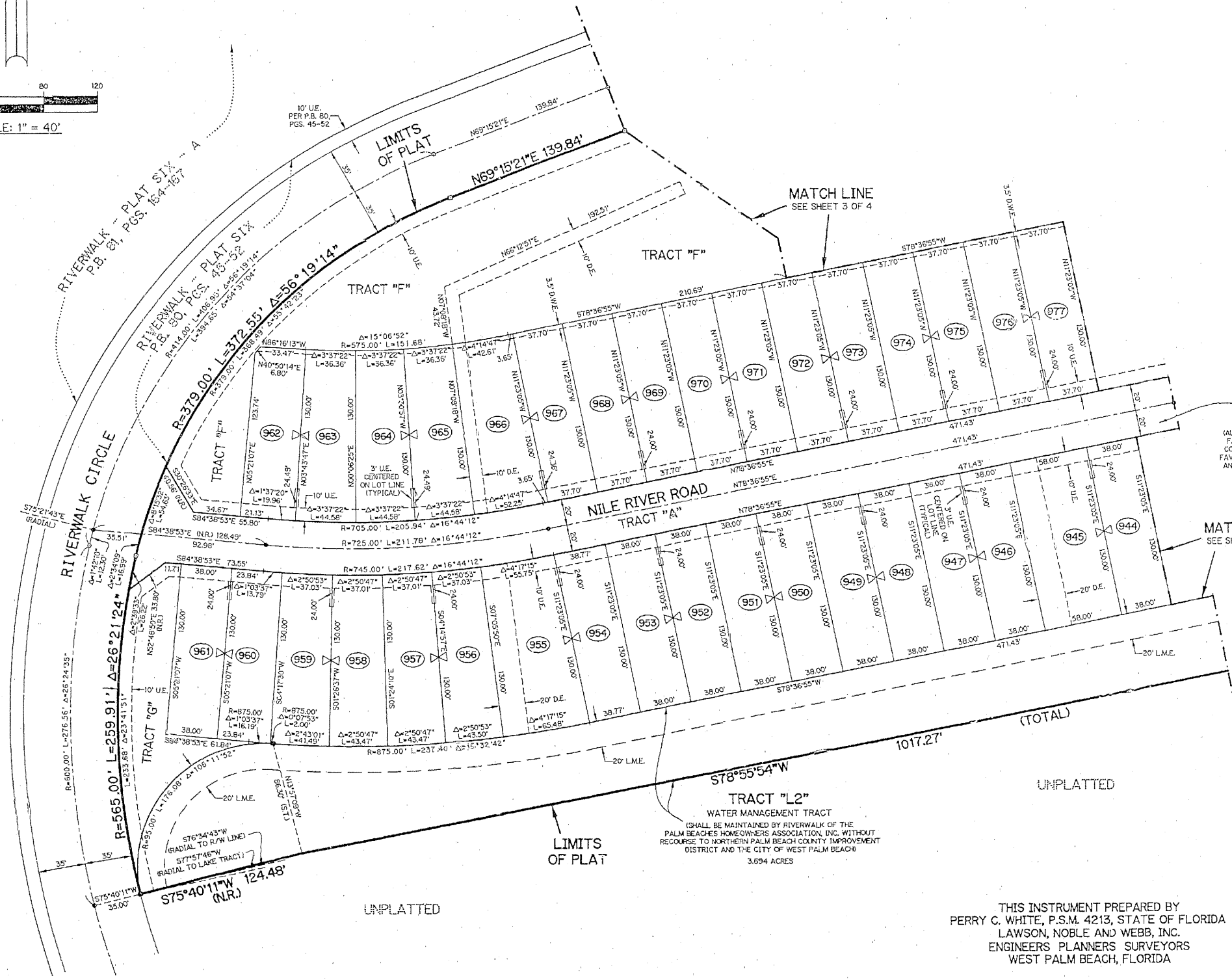
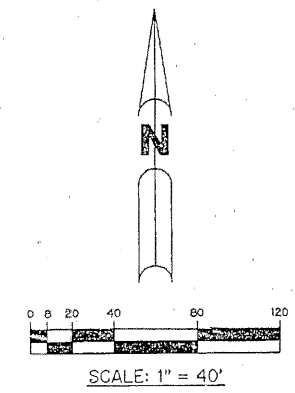


# RIVERWALK - PLAT NINE

A PARCEL OF LAND LYING IN SECTION 21, TOWNSHIP 43 SOUTH,  
RANGE 42 EAST, CITY OF WEST PALM BEACH,  
PALM BEACH COUNTY, FLORIDA.

SHEET 4 OF 4      DECEMBER, 1997



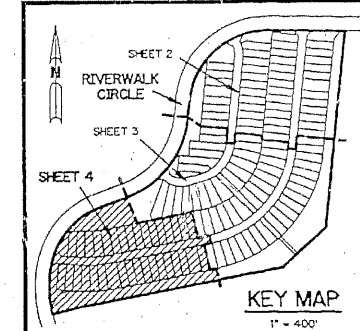
**LEGEND:**

- ◻ - FOUND PERMANENT REFERENCE MONUMENT, PLS #4213
- ◻ - FOUND PERMANENT CONTROL POINT, PLS #4213
- ◻ - SET PERMANENT REFERENCE MONUMENT, PLS #4213
- ◻ - SET PERMANENT CONTROL POINT, PLS #4213
- Δ - DELTA ANGLE
- DE - BUFFER EASEMENT
- D.E. - DRAINAGE EASEMENT
- D.W.E. - DRAINAGE, WALL & LANDSCAPE EASEMENT
- L - ARC LENGTH
- L.M.E. - LAKE MAINTENANCE EASEMENT
- N.R. - NOT RADIAL
- N.T.S. - NOT TO SCALE
- O.R.B. - OFFICIAL RECORD BOOK
- P.B. - PLAT BOOK
- P.G.S. - PAGES
- PLS - PROFESSIONAL LAND SURVEYOR
- P.S.M. - PROFESSIONAL SURVEYOR AND MAPPER
- R - RADIUS
- R.E. - RIVERWALK EASEMENT
- R/W - RIGHT-OF-WAY
- S.T. - SURVEY TIE
- UE - UTILITY EASEMENT
- ⊗ - INDICATES COMMON BUILDING LINE

**TRACT "A"**  
(ALSO AN INGRESS-EGRESS EASEMENT IN FAVOR OF THE NORTHERN PALM BEACH COUNTY IMPROVEMENT DISTRICT AND IN FAVOR OF THE CITY OF WEST PALM BEACH AND ALSO A PUBLIC UTILITY EASEMENT.)

**MATCH LINE**  
SEE SHEET 3 OF 4

THIS INSTRUMENT PREPARED BY  
PERRY C. WHITE, P.S.M. 4213, STATE OF FLORIDA  
LAWSON, NOBLE AND WEBB, INC.  
ENGINEERS PLANNERS SURVEYORS  
WEST PALM BEACH, FLORIDA



A209.RW9      SHEET 4 OF 4