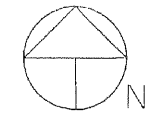
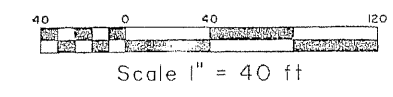


PLAT NO. 11 POINT MANALAPAN

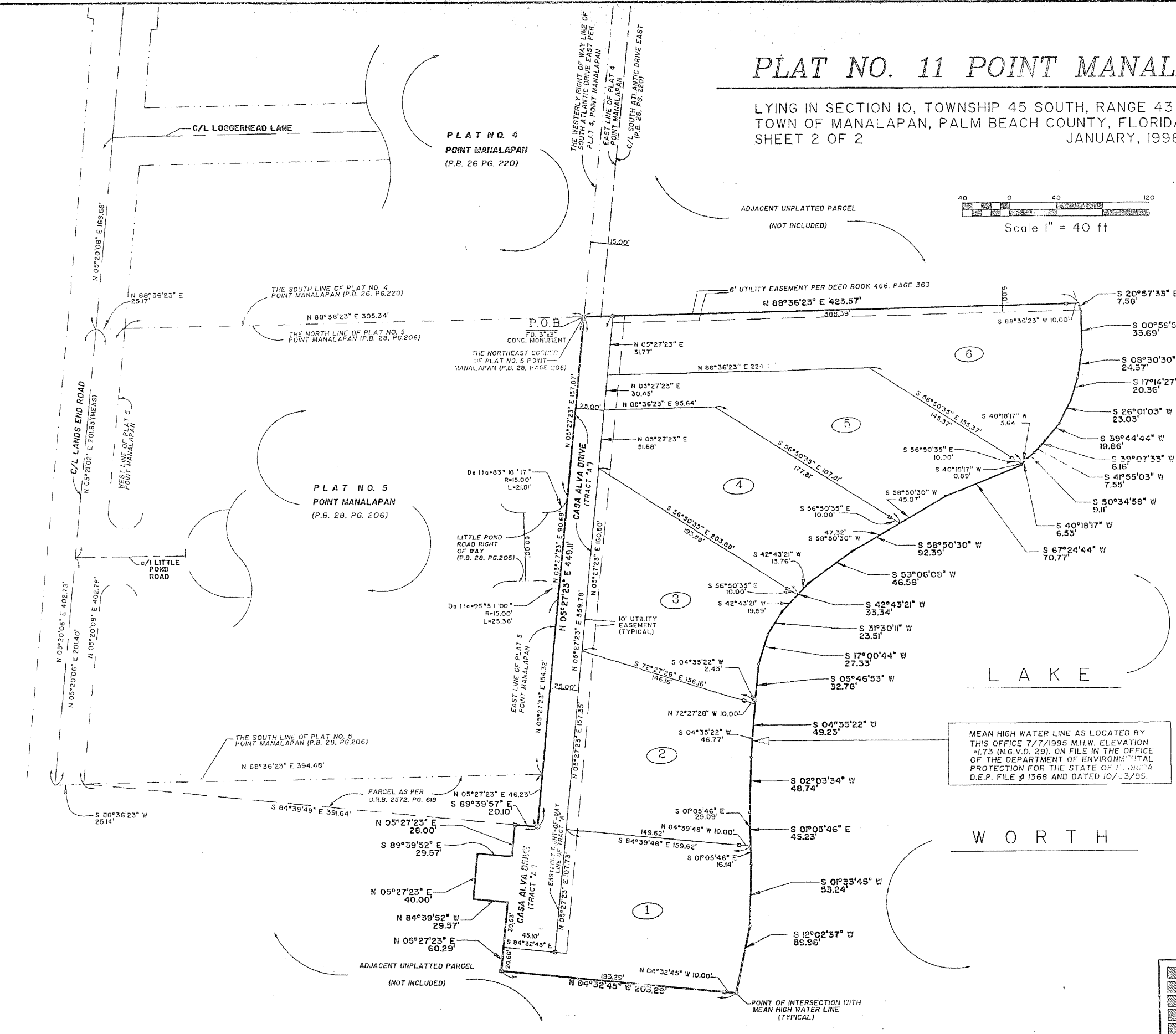
LYING IN SECTION 10, TOWNSHIP 45 SOUTH, RANGE 43 EAST
TOWN OF MANALAPAN, PALM BEACH COUNTY, FLORIDA
SHEET 2 OF 2
JANUARY, 1998

STATE OF FLORIDA
 COUNTY OF PALM BEACH
 THIS PLAT WAS FILED FOR RECORD AT _____
 ON _____ DAY OF _____ 19____
 AND PUBLICLY RECORDED IN PLAT BOOK NO. _____
 ON PAGE _____
 DOROTHY H. WILKEN, CLERK OF THE CIRCUIT COURT
 BY _____ D.C.



TABULATION DATA (LOT AREAS)

LOT NO.	SQ. FEET	ACRES
1	21,780.49	0.50
2	21,780.35	0.50
3	21,780.0	0.50
4	21,780.0	0.50
5	21,780.0	0.50
6	29,372.48	0.67



MEAN HIGH WATER LINE AS LOCATED BY
 THIS OFFICE 7/7/1995 M.H.W. ELEVATION
 =1.73 (N.G.V.D. 29) ON FILE IN THE OFFICE
 OF THE DEPARTMENT OF ENVIRONMENTAL
 PROTECTION FOR THE STATE OF FLORIDA
 D.E.P. FILE # 1368 AND DATED 10/13/95.

Landmark Surveying & Mapping Inc.
 1850 Forest Hill Boulevard
 Ph. (561) 433-5405 Suite 100 W.P.B. Florida

PLAT NO. 11 POINT MANALAPAN