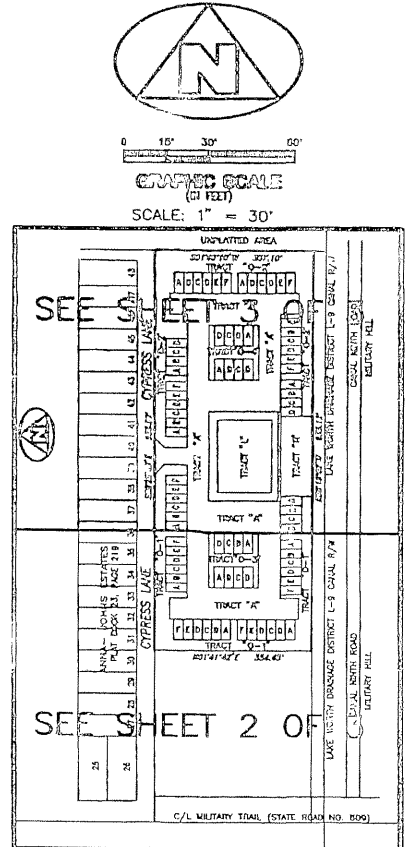
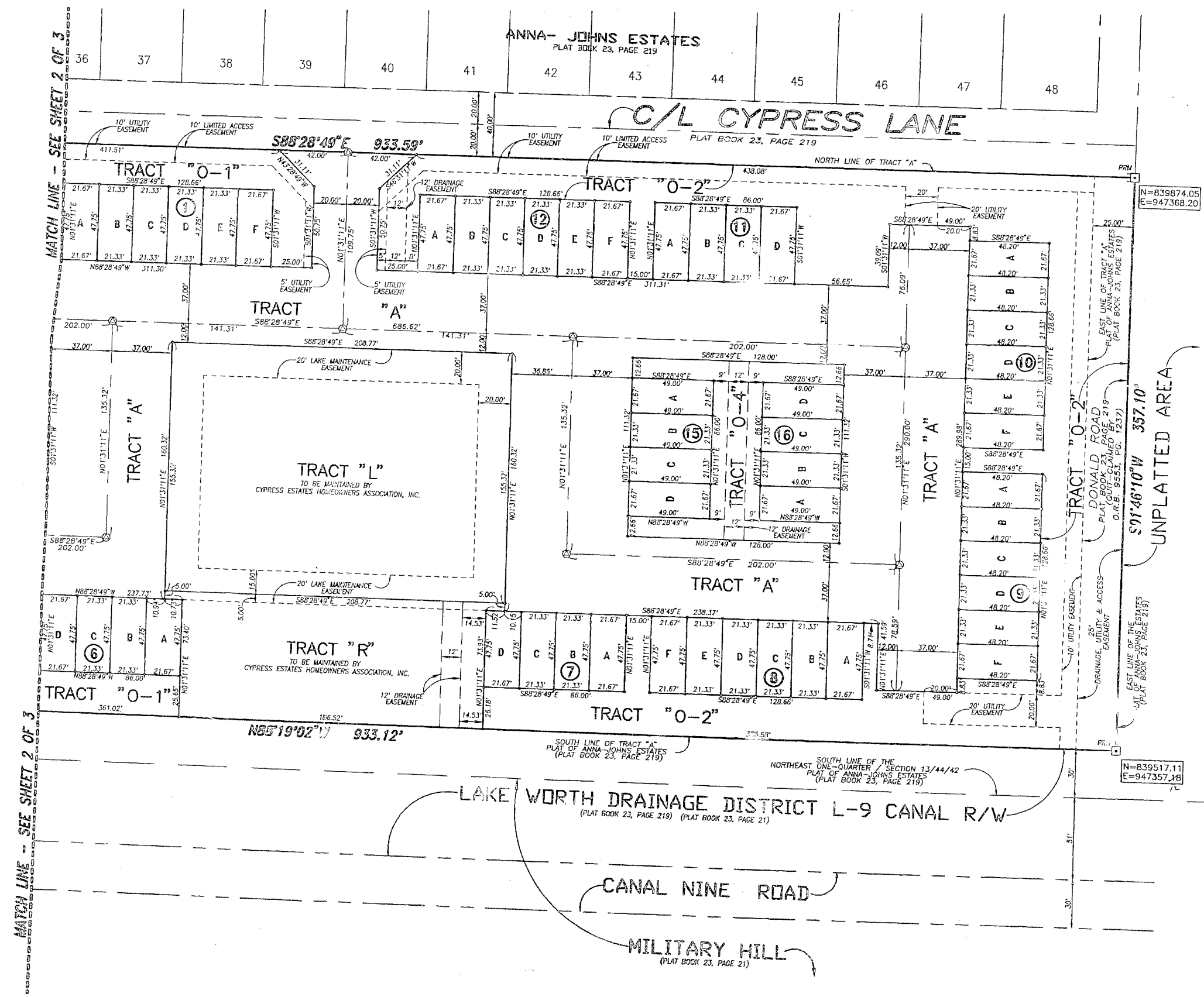


DECEMBER 1997 CYPRESS ESTATES OF PALM SPRINGS SHEET 3 of 3

124

BEING A REPLAT OF TRACT "A", LESS THE WEST 350 FEET THEREOF, AND A PORTION OF DONALD ROAD RIGHT-OF-WAY (NOW QUIT-CLAIMED), ANNA-JOHNS ESTATES, AS RECORDED IN PLAT BOOK 23, PAGE 219, PUBLIC RECORDS, PALM BEACH COUNTY, FLORIDA, AND LYING IN THE NORTHEAST ONE-QUARTER OF SECTION 13, TOWNSHIP 44 SOUTH, RANGE 42 EAST, VILLAGE OF PALM SPRINGS, PALM BEACH COUNTY, FLORIDA.



- SURVEYOR'S NOTES AND LEGEND:**
1. IN THOSE INSTANCES WHERE UTILITY/DRAINAGE STRUCTURES ARE CONSTRUCTED IN CONFLICT WITH THE PLATTED PERMANENT CONTROL POINTS (P.C.P.) POSITION, SURVEYORS UNPLATTED AS PERMITTED CONTROL POINTS SHALL BE SET TO REFERENCE THE PLATTED P.C.P. POSITION.
 2. LINES WHICH INTERSECT CURVES ARE NOT RADIAL, UNLESS OTHERWISE NOTED.
 3. C/L DENOTES CENTERLINE
 4. [Symbol] DENOTES A SET #2424 PERMANENT REFERENCE MONUMENT (P.R.M.)
 5. [Symbol] DENOTES A SET #2424 PERMANENT CONTROL POINT (P.C.P.)
 6. N=839874.05 = NORTHING COORDINATE
E=947368.20 = EASTING COORDINATE
 7. THE BEARINGS SHOWN HEREON ARE BASED ON STATE PLANE GRID AZIMUTHS ACCORDING TO THE TRANSVERSE MERIDIAN PROJECTION OF THE FLORIDA EAST ZONE, NAD, 83, AS PER THE 1990 ADJUSTMENT.

THIS INSTRUMENT WAS PREPARED BY W.A. R. VAN CAUPEM, R.L.S., IN AND FOR THE OFFICES OF BENCH MARK LAND SURVEYING & MAPPING, INC., 4152 WEST BLUE HERON BOULEVARD, SUITE 121, RIVERA BEACH, FLORIDA

BENCH MARK
Land Surveying and Mapping, Inc.
4152 West Blue Heron Blvd., Suite 121, Riviera Beach, FL 33404
Fax (407) 644-9059 Phone (407) 642-2102

RECORD PLAT
CYPRESS ESTATES OF PALM SPRINGS

DATE	FILE	DATE	FILE
5/28/98	14035	5/28/98	14035
SCALE 1" = 30'	SHEET 3 OF 3		