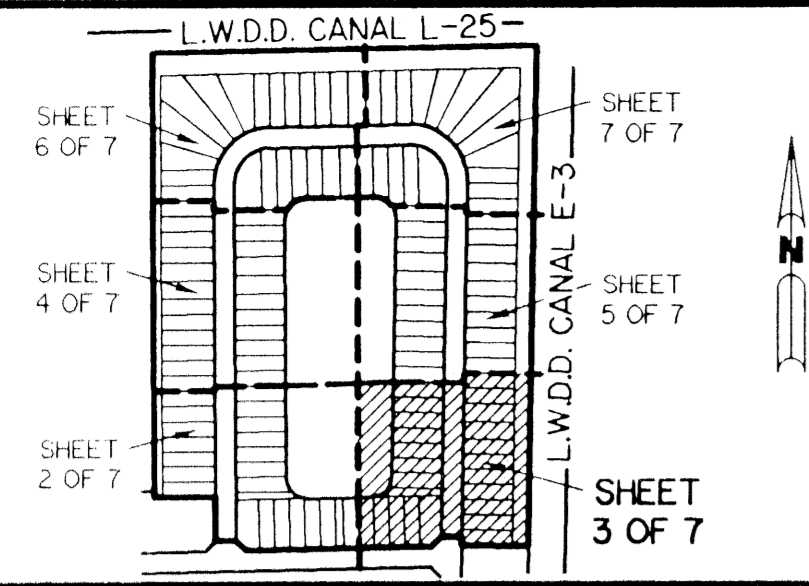


A PLANNED UNIT DEVELOPMENT

MAJESTIC ISLES - PLAT THREE

BEING A REPLAT OF A PORTION OF TRACTS 37, 38, 39, AND 40 ACCORDING TO THE PLAT OF THE SUBDIVISION OF SECTION 26, TOWNSHIP 45 SOUTH, RANGE 42 EAST. AS RECORDED IN PLAT BOOK 6, PAGE 26, PUBLIC RECORDS OF PALM BEACH COUNTY, FLORIDA.

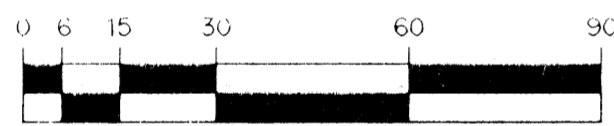
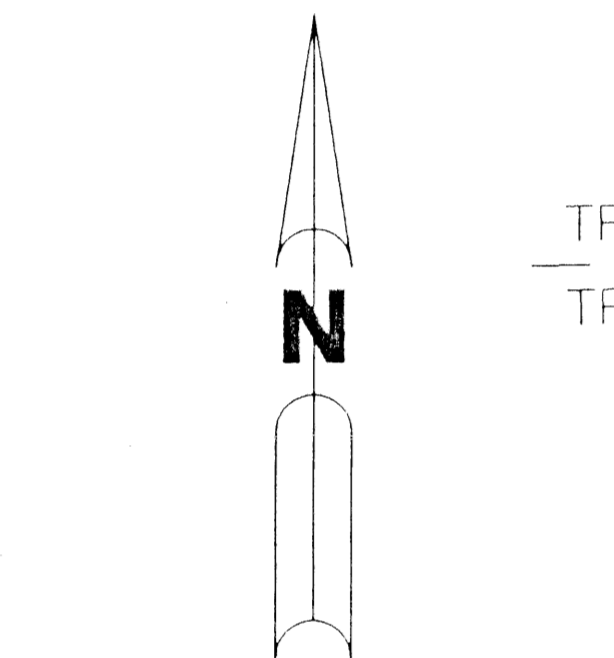
SHEET 3 OF 7 MARCH, 1995



KEY MAP
N.T.S.

*PET. 88-139B
NO SCHOOLS- RESTRICTIVE
COVENANT
5/3/3/K*

TRACT "L3"
WATER MANAGEMENT TRACT
(SHALL BE MAINTAINED BY MAJESTIC ISLES ASSOCIATION, INC. WITHOUT RECOURSE TO PALM BEACH COUNTY)
4.431 ACRES



SCALE: 1" = 30'

TRACT 38 SUB.
TRACT 37 SUB.

