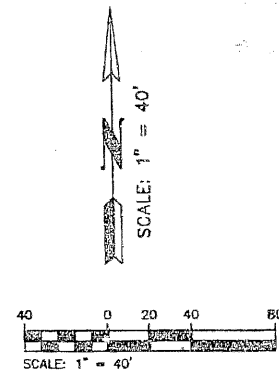


# CENTREPARK-PLAT 3

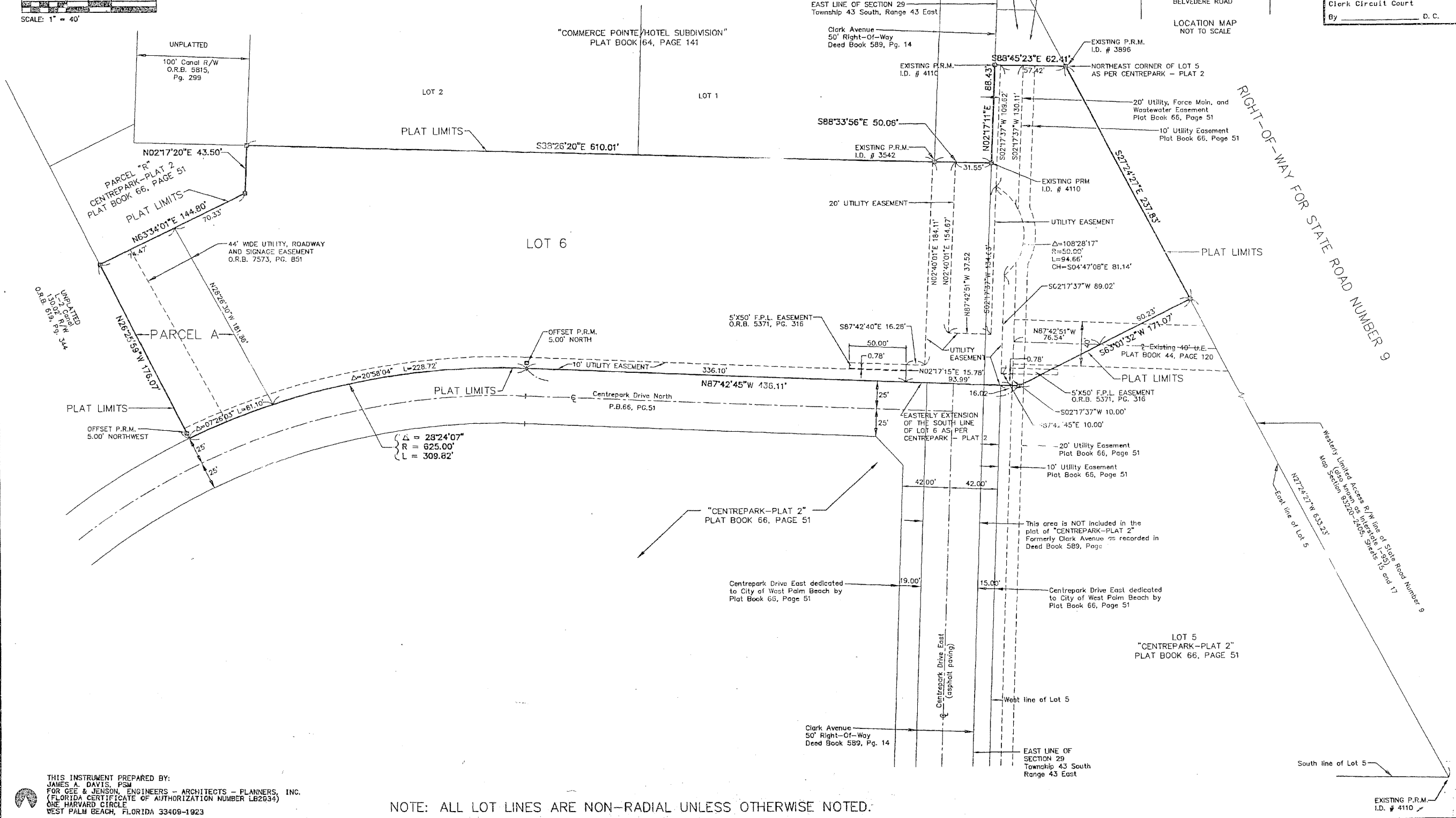
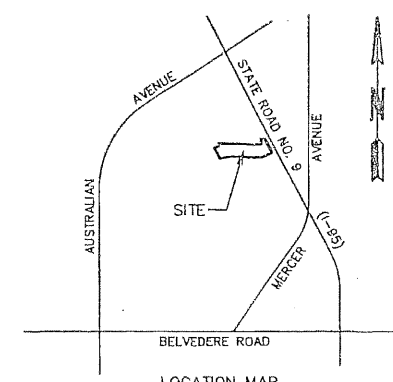
BEING A REPLAT OF LOTS 5 AND 6 OF CENTREPARK - PLAT 2  
AS RECORDED IN PLAT BOOK 66, PAGE 51, OF THE PUBLIC RECORDS IN AND FOR  
PALM BEACH COUNTY, FLORIDA, LYING IN SECTIONS 28 AND 29, TOWNSHIP 43 SOUTH,  
RANGE 43 EAST, CITY OF WEST PALM BEACH, PALM BEACH COUNTY, FLORIDA

SHEET NO. 2 OF 2

GEE & JENSON  
ENGINEERS - ARCHITECTS - PLANNERS, INC.  
WEST PALM BEACH, FLORIDA  
APRIL 1997



STATE OF FLORIDA  
COUNTY OF PALM BEACH  
This plat was filed for  
record at \_\_\_\_\_ M. this \_\_\_\_\_ day  
of \_\_\_\_\_ 1997, and duly  
recorded in Plat Book No. \_\_\_\_\_  
on Pages \_\_\_\_\_ thru \_\_\_\_\_  
DOROTHY H. WILKEN  
Clerk Circuit Court  
By \_\_\_\_\_ D. C.



THIS INSTRUMENT PREPARED BY:  
JAMES A. DAVIS, PSM  
FOR GEE & JENSON, ENGINEERS - ARCHITECTS - PLANNERS, INC.  
(FLORIDA CERTIFICATE OF AUTHORIZATION NUMBER LB2634)  
ONE HARVARD CIRCLE  
WEST PALM BEACH, FLORIDA 33409-1923

NOTE: ALL LOT LINES ARE NON-RADIAL UNLESS OTHERWISE NOTED.