

# NORTH OAKS P.U.D.

IN PART OF SECTION 27, TOWNSHIP 46 SOUTH, RANGE 42 EAST  
PALM BEACH COUNTY, FLORIDA  
SHEET NO. 5 OF 5

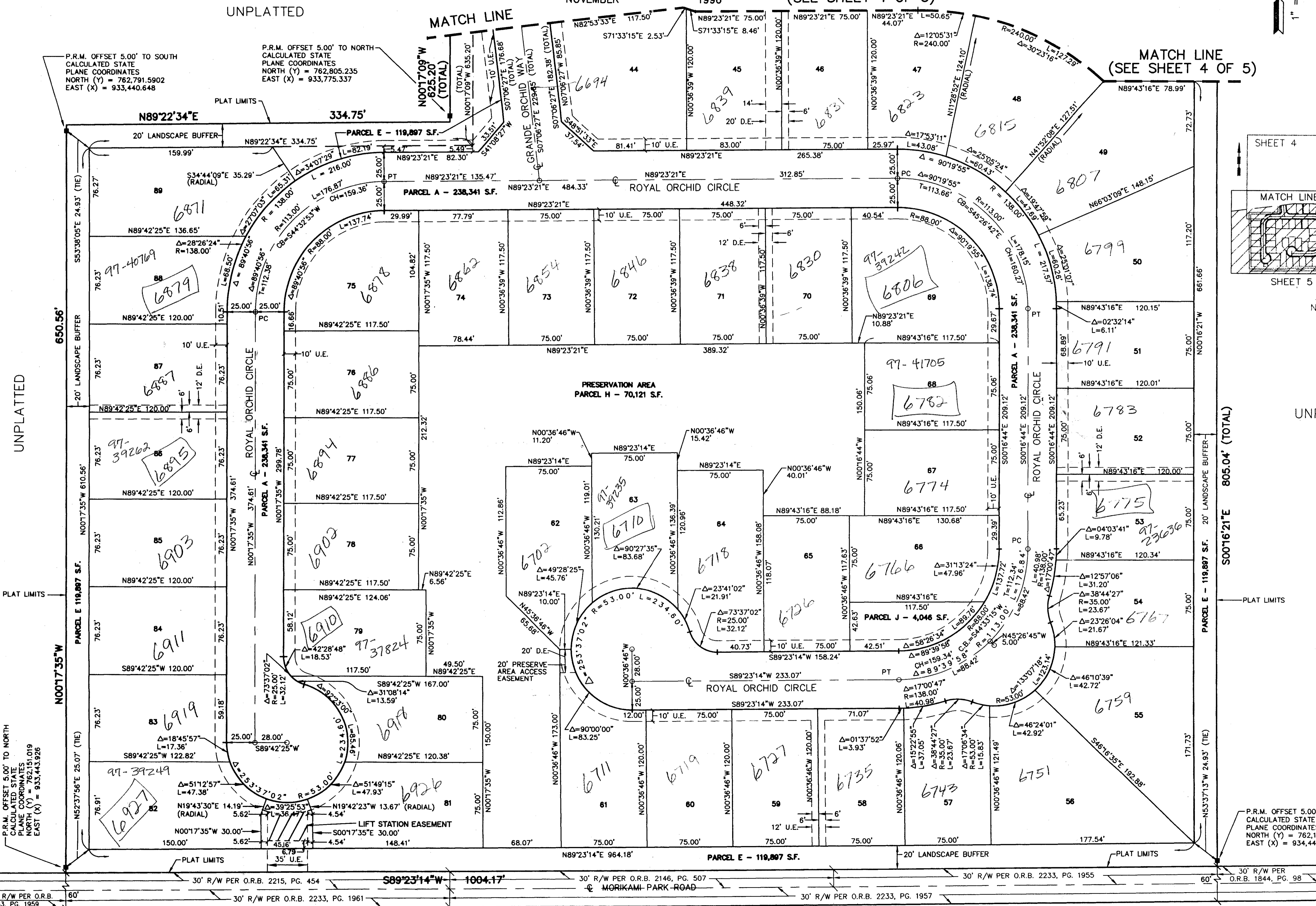
GEE & JENSON  
ENGINEERS - ARCHITECTS - PLANNERS, INC.  
WEST PALM BEACH, FLORIDA  
NOVEMBER 1996

(SEE SHEET 4 OF 5)



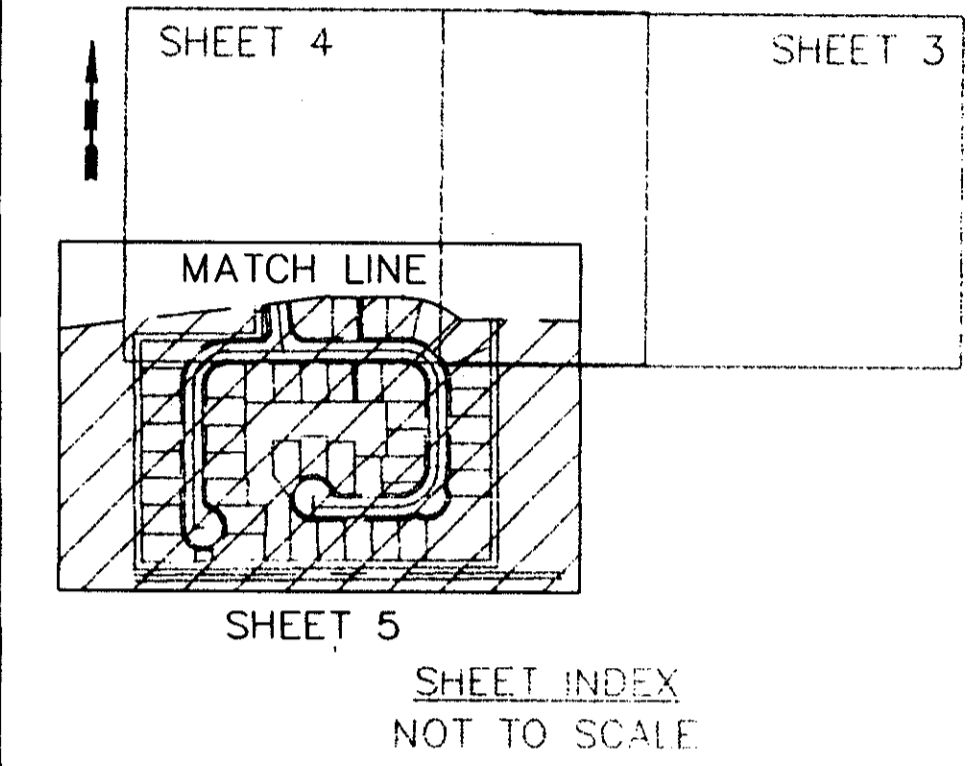
# 191

STATE OF FLORIDA  
COUNTY OF PALM BEACH  
This plat was filed for  
record on this day  
of 1997, and duly  
recorded in Plat Book No.  
on Pages thru  
DOROTHY H. WILKEN  
Clerk Circuit Court  
By \_\_\_\_\_ D. C.



SUBDIVISION \* NORTH OAKS  
BOOK 88 PAGE 191  
FLOOD ZONE B FLOOD MAP # 215A  
QUAD # 37 ZONING PUD  
SE ZIP CODE 33496  
PUD NAME NORTH OAKS

COMPUTED B.C. / MH  
DRAWN CADD  
CHECKED  
APPROVED  
JOB NO. 96-212



SHEET INDEX  
NOT TO SCALE

P.R.M. OFFSET 5.00' TO NORTH  
CALCULATED STATE  
PLANE COORDINATES  
NORTH (Y) = 762,151.019  
EAST (X) = 933,443.926

P.R.M. OFFSET 5.00' TO NORTH  
CALCULATED STATE  
PLANE COORDINATES  
NORTH (Y) = 762,161.760  
EAST (X) = 934,448.074

NOTE: ALL LOT LINES ARE NON-RADIAL UNLESS OTHERWISE NOTED.

THIS INSTRUMENT PREPARED BY:  
JAMES A. DAVIS, P.S.M.  
GEE & JENSON ENGINEERS  
(FLORIDA CERTIFICATE OF AUTHORIZATION NUMBER LB2935)  
ONE HARVARD CIRCLE  
WEST PALM BEACH, FLORIDA 33409-1923