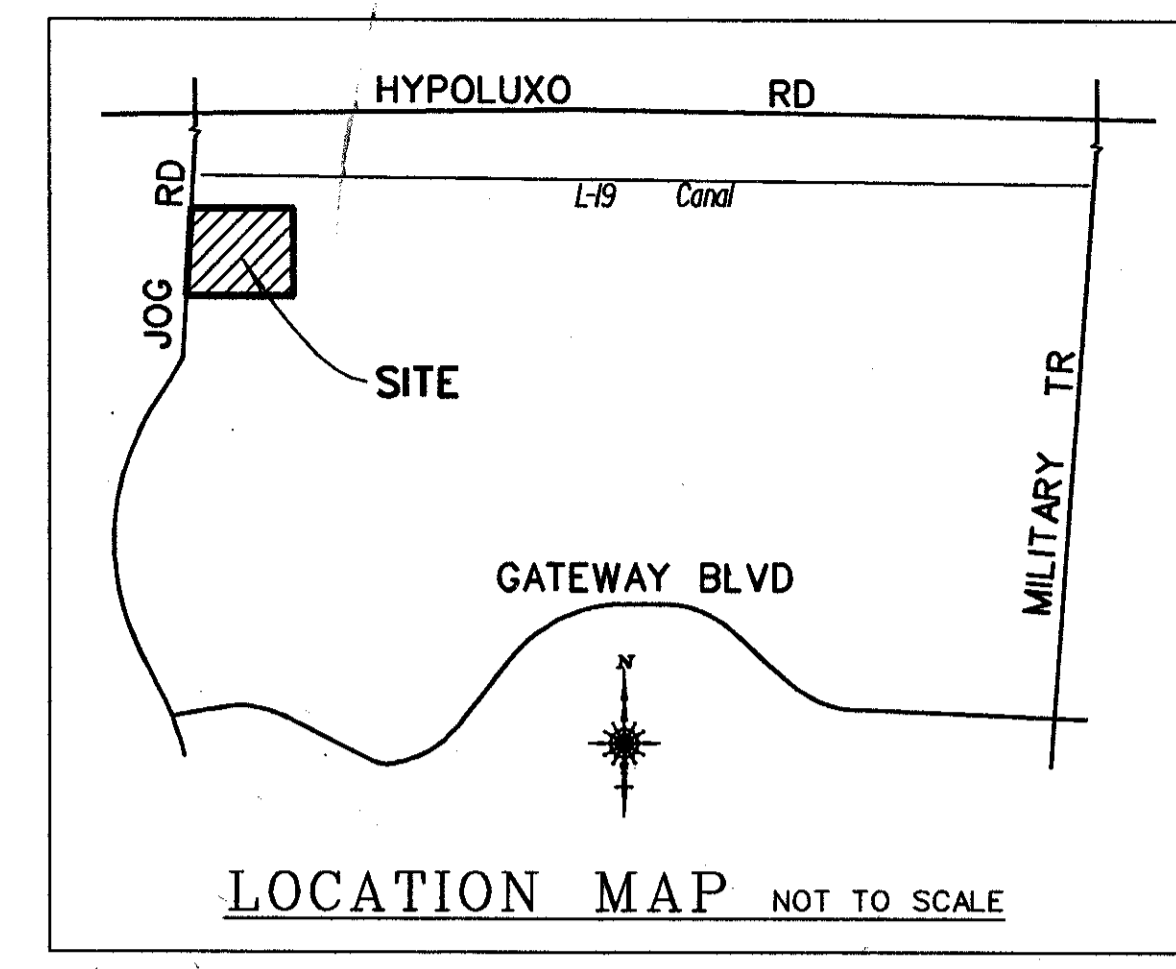


0669-002

156

COUNTY OF PALM BEACH )  
STATE OF FLORIDA )  
This Plat was filed for record at 8:03 AM  
this 03 day of September 1997  
and duly recorded in Plat Book No. 80  
on page 156  
DOROTHY H. WILKEN, Clerk of Circuit Court  
by Hugh J. Dawalt



PLAT OF  
FIRE STATION NO. 46  
A PORTION OF JOG ROAD RESIDENTIAL P.U.D.  
IN THE SOUTHEAST QUARTER OF SECTION 10,  
TOWNSHIP 45 SOUTH, RANGE 42 EAST  
PALM BEACH COUNTY, FLORIDA  
JANUARY 1997

DEDICATION

KNOWN ALL MEN BY THESE PRESENTS THAT THE BOARD OF COUNTY COMMISSIONERS OF PALM BEACH COUNTY, FLORIDA, A POLITICAL SUBDIVISION OF THE STATE OF FLORIDA, OWNER OF THE LAND SHOWN HEREON AS FIRE STATION NO. 46 "A PORTION OF JOG ROAD RESIDENTIAL P.U.D.", BEING IN SECTION 10, TOWNSHIP 45 SOUTH, RANGE 42 EAST, PALM BEACH COUNTY, FLORIDA, BEING MORE PARTICULARLY DESCRIBED AS FOLLOWS:

A PARCEL OF LAND FOR GOVERNMENT PURPOSES IN THE SOUTHEAST QUARTER OF SECTION 10, TOWNSHIP 45 SOUTH, RANGE 42 EAST, PALM BEACH COUNTY, FLORIDA, MORE PARTICULARLY DESCRIBED AS FOLLOWS:

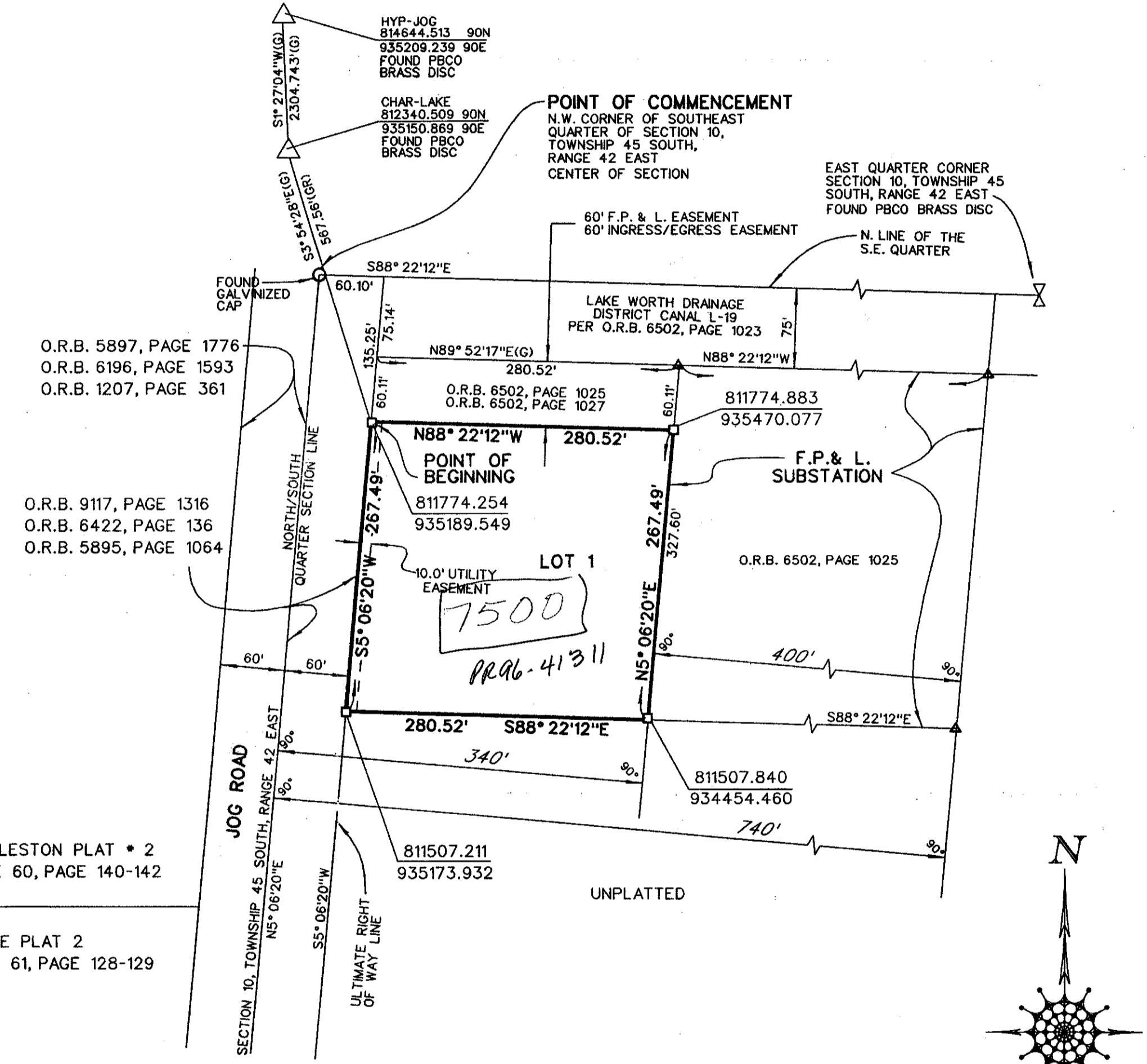
COMMENCE AT THE NORTHWEST CORNER OF SOUTHEAST QUARTER OF SECTION 10, TOWNSHIP 45 SOUTH, RANGE 42 EAST; THENCE S 88° 22' 12" E, ALONG THE NORTH LINE OF THE SOUTHEAST QUARTER TO THE ULTIMATE EAST RIGHT-OF-WAY OF JOG ROAD PALM BEACH COUNTY PROJECT NO. 94503, A DISTANCE OF 60.10 FEET; THENCE S 5° 06' 20" W, ALONG THE ULTIMATE EAST RIGHT-OF-WAY LINE OF JOG ROAD TO THE POINT OF BEGINNING, A DISTANCE OF 135.25 FEET; THENCE CONTINUE S 5° 06' 20" W, ALONG THE ULTIMATE EAST RIGHT-OF-WAY OF JOG ROAD TO THE WESTERLY EXTENSION OF THE SOUTH LINE OF THAT PARCEL OF LAND RECORDED IN OFFICIAL RECORD BOOK 6502, PAGE 1025, OF THE PUBLIC RECORDS OF PALM BEACH COUNTY, FLORIDA, (FLORIDA POWER & LIGHT SUB-STATION), A DISTANCE OF 267.49 FEET; THENCE S 88° 22' 12" E, ALONG SAID LINE TO THE SOUTHWEST CORNER OF SAID PARCEL, A DISTANCE OF 280.52 FEET; THENCE N 5° 06' 20" E, ALONG THE WEST LINE OF SAID PARCEL TO THE SOUTH LINE OF A 60.0 FOOT FLORIDA POWER & LIGHT/INGRESS & EGRESS EASEMENT, RECORDED IN OFFICIAL RECORD BOOK 6502, PAGE 1025 AND OFFICIAL RECORD BOOK 6502, PAGE 1027, OF THE PUBLIC RECORDS OF PALM BEACH COUNTY, FLORIDA, A DISTANCE OF 267.49 FEET; THENCE N 88° 22' 12" W, ALONG SAID SOUTH LINE TO THE POINT OF BEGINNING A DISTANCE OF 280.52 FEET.

PARCEL CONTAINS 1.72 ACRES MORE OR LESS.

HAVE CAUSED THE SAME TO BE SURVEYED AND PLATTED AS SHOWN HEREON AND DO HEREBY MAKE THE FOLLOWING DEDICATIONS AND RESERVATIONS:

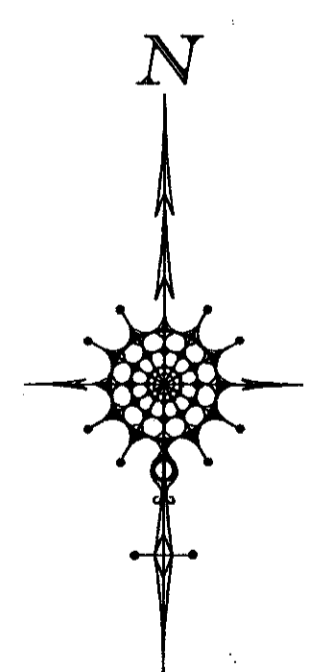
- 1) THE UTILITY EASEMENTS AS SHOWN HEREON ARE HEREBY DEDICATED IN PERPETUITY FOR THE CONSTRUCTION AND MAINTENANCE OF UTILITY FACILITIES, INCLUDING CABLE TELEVISION SYSTEMS. THE INSTALLATION OF CABLE TELEVISION SYSTEMS SHALL NOT INTERFERE WITH THE CONSTRUCTION AND MAINTENANCE OF OTHER UTILITIES.

- LEGEND  
O.R.B. - OFFICIAL RECORD BOOK  
F.P.L. - FLORIDA POWER & LIGHT  
P.L.S. - PROFESSIONAL LAND SURVEYOR  
□ - SET PERMANENT REFERENCE MONUMENT LS 4733  
▲ - FOUND IRON ROD & CAP OSO  
● - PROPERTY CORNER  
PBCO - PALM BEACH COUNTY  
OSO - OBIEN, SUTTER, OBIEN  
G - GRID  
OS - OFFSET  
GR - GROUND



TABULAR DATA

PETITION NUMBER	94-016
ZONING CLASSIFICATION	LR3
TOTAL ACERAGE	1.72 ACRES
NUMBER OF TRACTS	1



PREPARING SURVEYOR'S STATEMENT  
THIS INSTRUMENT WAS PREPARED BY JOHN A. MURNAN, P.L.S., IN THE OFFICE OF THE SURVEY SECTION OF THE DEPARTMENT OF ENGINEERING & PUBLIC WORKS FOR PALM BEACH COUNTY, FLORIDA, AT 160 AUSTRALIAN AVENUE, ROOM #402, WEST PALM BEACH, FLORIDA 33406.

SURVEYORS NOTES  
1 NO BUILDINGS OR ANY KIND OF CONSTRUCTION OR TREES OR SHRUBS SHALL BE PLACED ON ANY EASEMENT WITHOUT PRIOR WRITTEN APPROVAL OF ALL EASEMENT BENEFICIARIES AND ALL APPLICABLE COUNTY APPROVALS OR PERMITS AS REQUIRED FOR SUCH ENCROACHMENTS.  
2 WHEN DRAINAGE AND UTILITY EASEMENTS CROSS, DRAINAGE EASEMENTS SHALL TAKE PRECEDENCE.  
3 THERE MAY BE ADDITIONAL RESTRICTIONS THAT ARE NOT RECORDED ON THIS PLAT THAT MAY BE FOUND IN THE PUBLIC RECORDS OF THIS COUNTY.

TITLE CERTIFICATION  
STATE OF FLORIDA )  
COUNTY OF PALM BEACH )  
WE, UNIVERSAL LAND TITLE, INC., A TITLE INSURANCE COMPANY AS DULY LICENSED IN THE STATE OF FLORIDA DO HEREBY CERTIFY THAT WE HAVE EXAMINED THE TITLE TO THE HEREON DESCRIBED PROPERTY; THAT WE FIND THE TITLE TO THE PROPERTY IS VESTED TO BOARD OF COUNTY COMMISSIONERS OF PALM BEACH COUNTY, A POLITICAL SUBDIVISION OF THE STATE OF FLORIDA AND THAT THERE ARE NO OTHER ENCROACHMENTS OF RECORD.  
DATED: 6-29-97 UNIVERSAL LAND TITLE, INC.

BY: Eileen C. Elms  
TITLE: Commercial Account Manager

BEARING NOTE  
BEARINGS CITED ARE RELATIVE TO AN ASSUMED BEARING OF S 88° 22' 12" E ON THE NORTH LINE OF THE SOUTHEAST QUARTER OF SECTION 10, TOWNSHIP 45 SOUTH, RANGE 42 EAST.  
STATE PLANE COORDINATES  
COORDINATES SHOWN ARE GRID DATUM - NAD 83, 1990 ADJUSTMENT ZONE - FLORIDA EAST LINEAR UNIT - US SURVEY FOOT COORDINATE SYSTEM 1983 STATE PLANE TRANSVERSE MERCATOR PROJECTION ALL DISTANCES ARE GROUND GROUND DISTANCE X SCALE FACTOR = GRID DISTANCE SCALE FACTOR - 1.0000303  
N89° 52' 17" E GRID = 1° 45' 31" COUNTERCLOCKWISE PLAT TO GRID

SURVEYORS CERTIFICATE  
THIS IS TO CERTIFY THAT THE PLAT SHOWN HEREON IS A TRUE AND CORRECT REPRESENTATION OF A SURVEY MADE UNDER MY RESPONSIBLE DIRECTION AND SUPERVISION; THAT SAID SURVEY IS ACCURATE TO THE BEST OF MY KNOWLEDGE AND BELIEF; THAT PERMANENT REFERENCE MONUMENTS ("P.R.M.S.") HAVE BEEN PLACED AS REQUIRED BY LAW; AND, FURTHER, THAT THE SURVEY DATA COMPLIES WITH ALL THE REQUIREMENTS OF CHAPTER 177, FLORIDA STATUTES, AS AMENDED, AND THE ORDINANCES OF PALM BEACH COUNTY, FLORIDA.

COUNTY APPROVALS  
COUNTY ENGINEER:  
THIS PLAT IS HEREBY APPROVED FOR RECORD PURSUANT TO PALM BEACH COUNTY ORDINANCE 95-33, AND IN ACCORDANCE WITH SEC. 177.071(2), F.S., THIS 2 DAY OF Sept, 1997  
George T. Webb, P.E.  
COUNTY ENGINEER

IN WITNESS WHEREOF, THE BOARD OF COUNTY COMMISSIONERS OF PALM BEACH COUNTY, FLORIDA HAS CAUSED THESE PRESENTS TO BE SIGNED BY ITS CHAIRMAN AND ITS SEAL AFFIXED HERETO THIS 19th DAY of August, 1997.  
BOARD OF COUNTY COMMISSIONERS  
ATTEST: DOROTHY H. WILKEN, CLERK OF THE CIRCUIT COURT  
By: Debra Dawalt, Deputy Clerk  
Burt Aaronson, Chairman

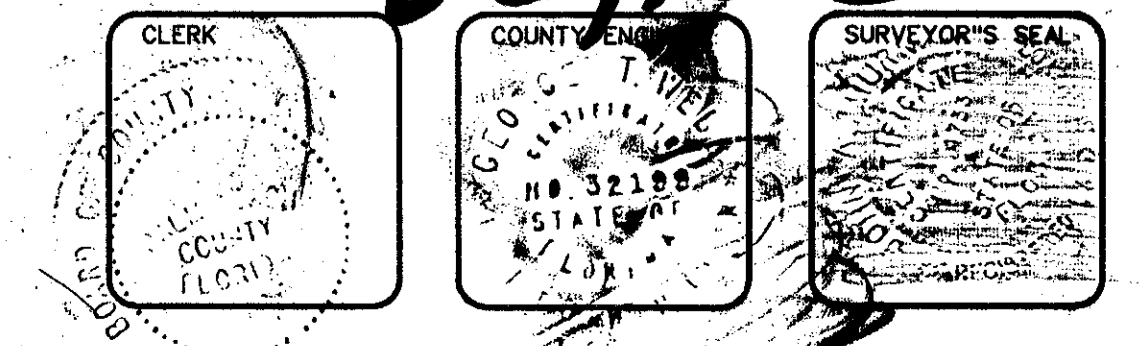
7/10/97  
DATE  
John A. Murnan  
JOHN A. MURNAN, P.L.S.  
LICENSE NO. 4733  
STATE OF FLORIDA

PLAT OF FIRE STATION NO. 46  
BOOK 80 PAGE 156  
FLOOD ZONE B FLOOD MAP # 185A  
QUAD # 34  
SECTION 10  
PUB NAME JOG Road Residential

PALM BEACH COUNTY  
ENGINEERING AND PUBLIC WORKS  
ENGINEERING SERVICES  
160 AUSTRALIAN AVENUE  
WEST PALM BEACH, FL 33406

SCALE: 1" = 100'  
APPROVED: J.A.M.  
DRAWN: E.A.O.  
CHECKED: N.J.H.  
DATE: 12/05/96

PLAT OF  
FIRE STATION NO. 46  
DRAWING NO. S-3-97-1109  
DESIGN FILE NAME PLE095027IND  
PROJECT NO. 95027



0669-002