

CONGRESS POINT PLAZA

5000-059
125

STATE OF FLORIDA SS
COUNTY OF PALM BEACH

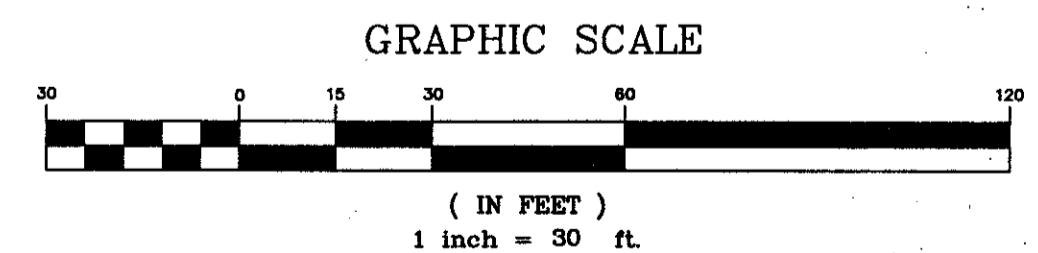
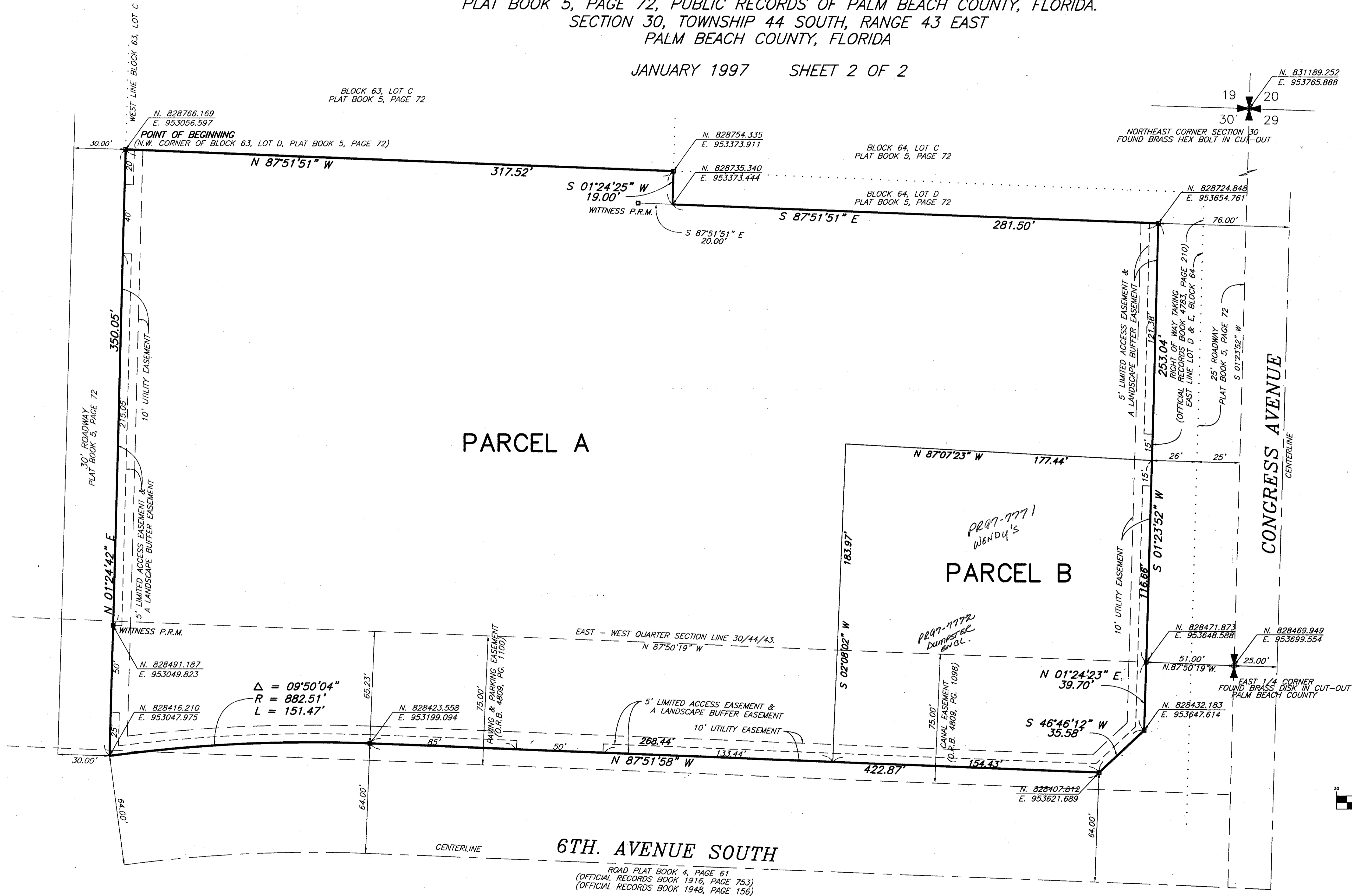
THIS PLAT WAS FILED FOR RECORD
THIS DAY OF
A.D. 1997 AND DULY
RECORDED IN PLAT BOOK _____, ON
PAGES _____ THROUGH _____.

DOROTHY H. WILKEN
CLERK OF THE CIRCUIT COURT

BY: _____ DEPUTY CLERK

A PCD AND BEING A REPLAT OF A PORTION OF BLOCK 63, 64, 65 & 66
THE PALM BEACH FARMS COMPANY PLAT NO. 7
PLAT BOOK 5, PAGE 72, PUBLIC RECORDS OF PALM BEACH COUNTY, FLORIDA.
SECTION 30, TOWNSHIP 44 SOUTH, RANGE 43 EAST
PALM BEACH COUNTY, FLORIDA

JANUARY 1997 SHEET 2 OF 2



SUBDIVISION * Congress Point Plaza
BOOK 80
PAGE 125
FLOOD MAP * 175B
ZONING CG/SE
QUAD * 18
SE 84-150
ZIP CODE 33461
PUD NAME CONGRESS POINT PLAZA

THIS INSTRUMENT WAS PREPARED BY CRAIG D. WATSON IN THE OFFICE OF BLOOMSTER PROFESSIONAL LAND SURVEYORS, INC., 641 N.E. SPENCER STREET, JENSEN BEACH FLORIDA, 34957.

BLOOMSTER
PROFESSIONAL LAND
SURVEYORS, INC.
L.B. #6018
641 N.E. SPENCER STREET
JENSEN BEACH, FLORIDA 34957
PHONE 407-334-0868

SHEET 2 OF 2	
SCALE:	1" = 30'
DATE:	12-20-96
F.B.:	SKETCH
JOB NO.:	1371
REVISIONS	