

JONES - PARCEL "C-1"

0683-005

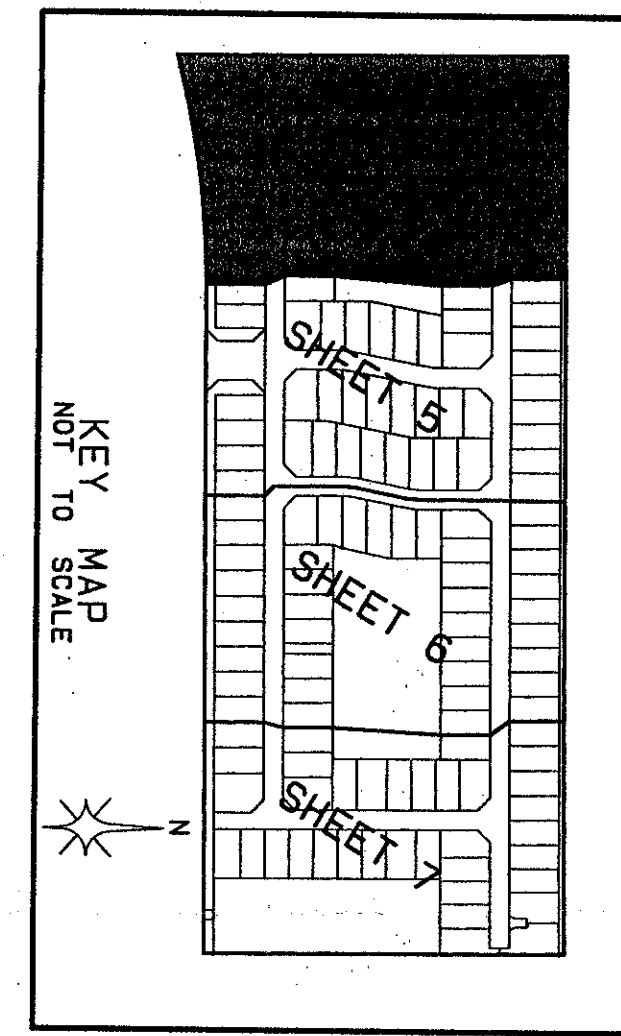
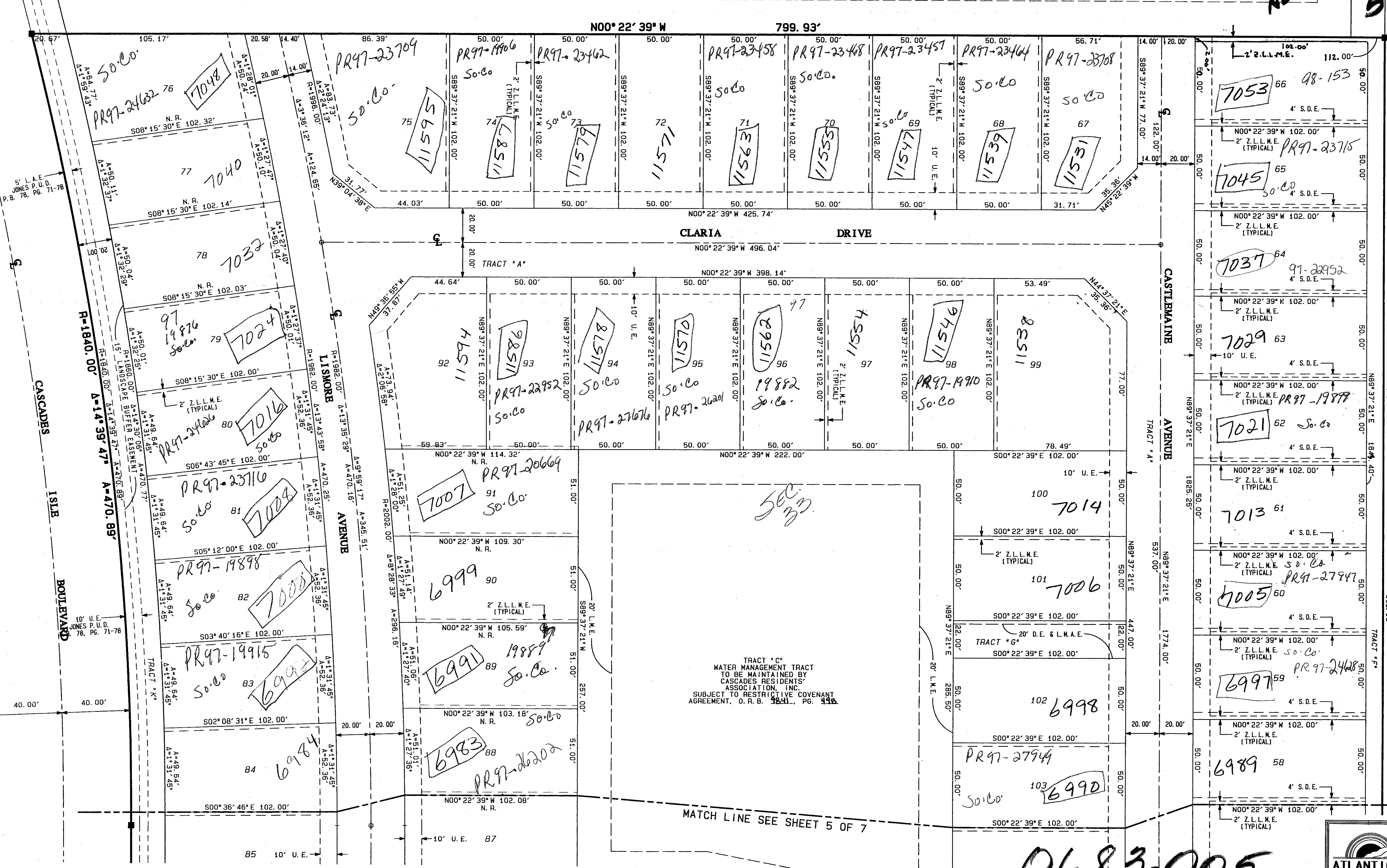
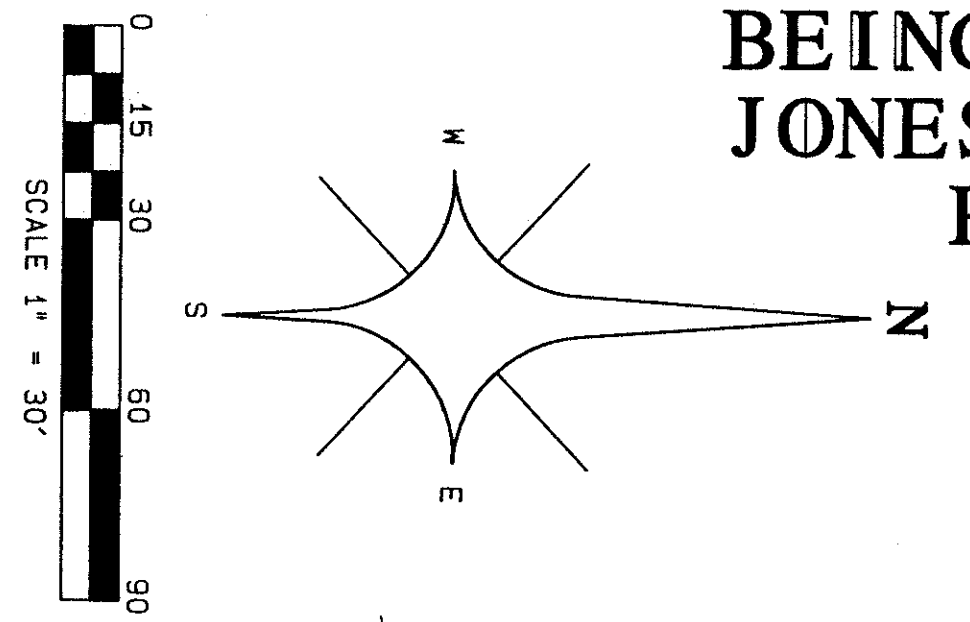
75

BEING A REPLAT OF PARCEL "C-1", TRACT "K-11" AND A PORTION OF TRACT "K-13", JONES P.U.D. AS RECORDED IN PLAT BOOK 78, PAGES 71 THROUGH 78 OF THE PUBLIC RECORDS OF PALM BEACH COUNTY, FLORIDA SITUATE IN SECTIONS 33 AND 34, TOWNSHIP 45 SOUTH, RANGE 42 EAST, PALM BEACH COUNTY, FLORIDA
 SHEET 4 OF 7

TRACT "L-8"
 JONES P.U.D.
 PLAT BOOK 78, PAGES 71-78

PET. 95-19
 ALLOC. #0001
 NO SCHOOLS-RESTR.
 COVENANT
 5/3/3/K

STATE OF FLORIDA
 COUNTY OF PALM BEACH } SS
 THIS PLAT WAS FILED FOR
 RECORD AT _____ DAY OF
 THIS _____ AD. 1997 AND
 DULY RECORDED IN PLAT BOOK
 _____ ON PAGES _____ AND
 DOROTHY H. WILKEN, CLERK
 CIRCUIT COURT
 BY: _____ DC



- LEGEND:**
- A = CENTRAL ANGLE/Delta
 - C = CENTERLINE
 - CH = CHORD
 - D.B. = DEED BOOK
 - D.E. = DRAINAGE EASEMENT
 - F.P.C.L. = FLORIDA POWER AND LIGHT COMPANY
 - L = ARC LENGTH
 - L.A.E. = LIMITED ACCESS EASEMENT
 - L.M.A.E. = LAKE MAINTENANCE ACCESS EASEMENT
 - L.M.E. = LAKE MAINTENANCE EASEMENT
 - L.M.D.D. = LAKE NORTH DRAINAGE DISTRICT
 - N.R. = NON-RADIAL
 - N.T.S. = NOT TO SCALE
 - O.R.B. = OFFICIAL RECORDS BOOK
 - P.B. = PLAT BOOK
 - P.B. = PAGE
 - P.O.B. = POINT OF BEGINNING
 - P.O.C. = POINT OF COMMENCEMENT
 - R = RADIUS (RADII)
 - R.F. = RADIAL TO FRONT LOT LINE
 - R.R. = RADIAL TO REAR LOT LINE
 - R/W = RIGHT OF WAY
 - S.D.E. = SMALE DRAINAGE EASEMENT
 - U.E. = UTILITY EASEMENT
 - W.C. = WITNESS CORNER
 - Z.L.L.M.E. = ZERO LOT LINE MAINTENANCE EASEMENT
 - PCP #4380 = PERMANENT CONTROL POINT (PCP)
 - PRM #4380 = PERMANENT REFERENCE MONUMENT (PRM)
 - SET PRM #4380

SUBDIVISION * JONES
 BOOK 80 PAGE 75
 FLOOD MAP # 2004
 ZONING PDD
 ZIP CODE 33409
 PUD NAME JONES

TRACT "C"
 WATER MANAGEMENT TRACT
 TO BE MAINTAINED BY
 CASCADES RESIDENTS'
 ASSOCIATION, INC.
 SUBJECT TO RESTRICTIVE COVENANT
 AGREEMENT, O. R. B. 32311, PG. 446

0683-005

PROFESSIONAL SURVEYORS AND MAPPERS
ATLANTIC - CARIBBEAN MAPPING, INC.
 3062 JOG ROAD GREENACRES, FLORIDA 33467
 (561) 964-7884 FAX (561) 964-1965

80/75