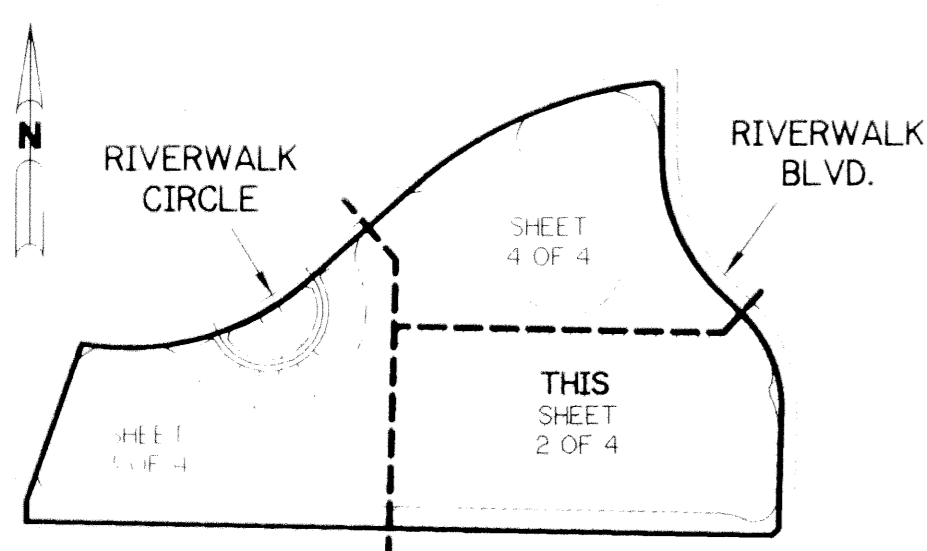


RIVERWALK - PLAT SEVEN

A PARCEL OF LAND LYING IN SECTION 21, TOWNSHIP 43 SOUTH,
RANGE 42 EAST, CITY OF WEST PALM BEACH,
PALM BEACH COUNTY, FLORIDA.

SHEET 2 OF 4 MAY, 1996



KEY MAP

MATCH LINE "B"
SEE SHEET 4 OF 4

MATCH LINE "B"
SEE SHEET 4 OF 4

LEGEND:

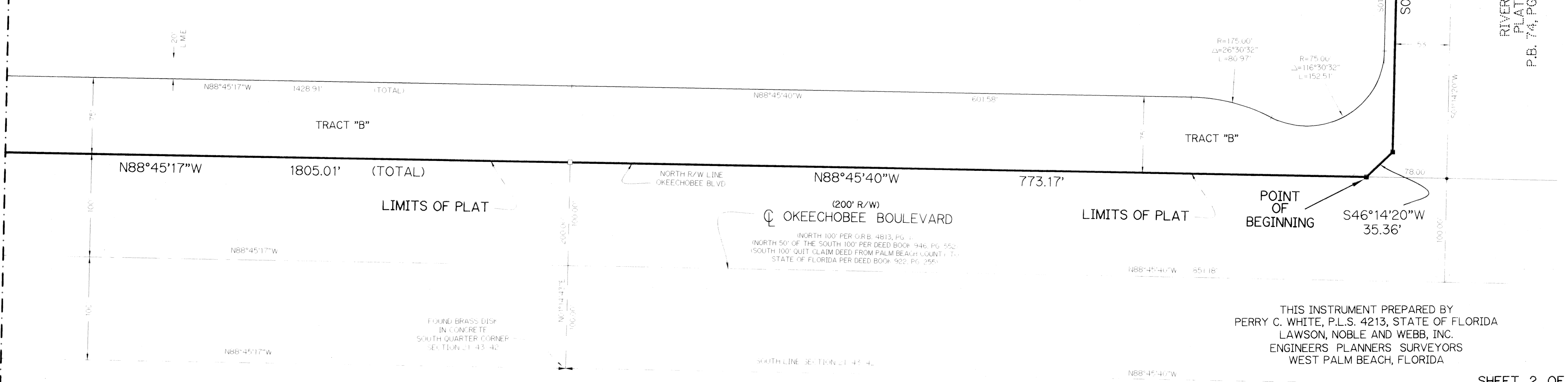
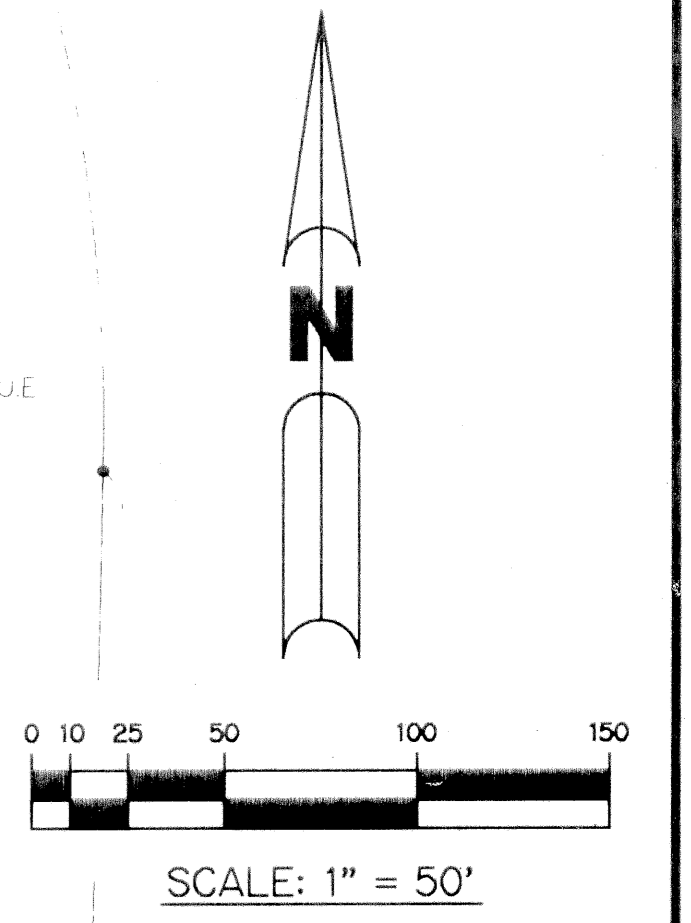
- - SET PERMANENT REFERENCE MONUMENT, PLS #4213
- - SET PERMANENT CONTROL POINT, PLS #4213
- - FOUND PERMANENT REFERENCE MONUMENT, PLS #4213
- - FOUND PERMANENT CONTROL POINT, PLS #4213
- Δ - DELTA ANGLE
- BE - BUFFER EASEMENT
- DE - DRAINAGE EASEMENT
- L - ARC LENGTH
- LME - LAKE MAINTENANCE EASEMENT
- N.R. - NOT RADIAL
- N.T.S. - NOT TO SCALE
- O.R.B. - OFFICIAL RECORD BOOK
- P.B. - PLAT BOOK
- PGS. - PAGES
- PLS - PROFESSIONAL LAND SURVEYOR
- P.S.M. - PROFESSIONAL SURVEYOR AND MAPPER
- R - RADIUS
- RE - RIVERWALK EASEMENT
- R/W - RIGHT-OF-WAY
- S.T. - SURVEY TIE
- UE - UTILITY EASEMENT

TRACT "L4"

WATER MANAGEMENT TRACT

(SHALL BE MAINTAINED BY RIVERWALK OF THE
PALM BEACHES HOMEOWNERS ASSOCIATION, INC. WITHOUT
RECOURSE TO NORTHERN PALM BEACH COUNTY IMPROVEMENT
DISTRICT AND THE CITY OF WEST PALM BEACH)
42.901 ACRES

MATCH LINE "A"
SEE SHEET 3 OF 4



RIVERWALK
PLAT ONE
P.B. 74, PGS. 157-146

THIS INSTRUMENT PREPARED BY
PERRY C. WHITE, P.L.S. 4213, STATE OF FLORIDA
LAWSON, NOBLE AND WEBB, INC.
ENGINEERS PLANNERS SURVEYORS
WEST PALM BEACH, FLORIDA

SUBDIVISION # RIVERWALK PLAT SEVEN
 BOOK 80 PAGE 54
 FLOOD ZONE FLOOD MAP #
 QUAD # ZONING
 SE ZIP CODE
 PUD NAME City of West Palm Beach TKZ 870