

0209-010

52

STATE OF FLORIDA
COUNTY OF PALM BEACH
THIS PLAT WAS FILED FOR
RECORD AT _____ M.
THIS _____ DAY OF _____
A.D. 199____ AND DULY RECORDED
IN PLAT BOOK _____ ON
PAGES _____ AND _____

DOROTHY H. WILKEN
CLERK CIRCUIT COURT

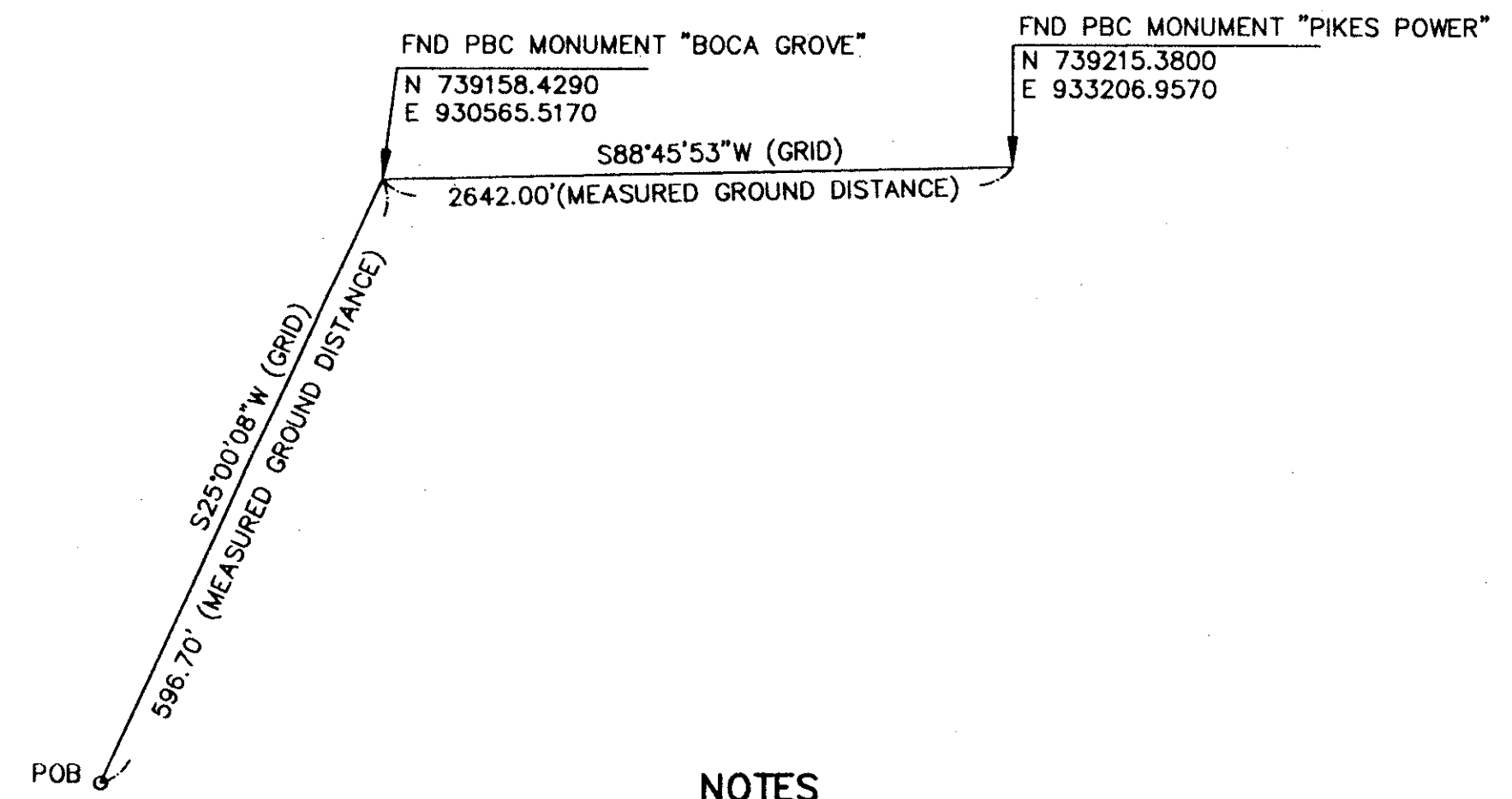
BY: _____
DEPUTY CLERK

SHEET 4 OF 4

PREPARED BY
DAVID P. LINDLEY
OF
CAULFIELD and WHEELER, INC.
ENGINEERS - PLANNERS - SURVEYORS
7301-A WEST PALMETTO PARK ROAD, SUITE 100A
BOCA RATON, FLORIDA 33433 - (407)392-1991
SEPTEMBER - 1996

GARDENS IN THE GROVE REPLAT

PART OF THE BOCA GROVE PLANTATION, P.U.D.
BEING A REPLAT OF A PORTION OF PARCEL "B", "GARDENS IN THE GROVE",
AS RECORDED IN PLAT BOOK 46, PAGES 62 THROUGH 63 OF THE PUBLIC
RECORDS OF PALM BEACH COUNTY, FLORIDA, LYING IN SECTION 21, TOWNSHIP 47 SOUTH, RANGE 42 EAST,
PALM BEACH COUNTY, FLORIDA

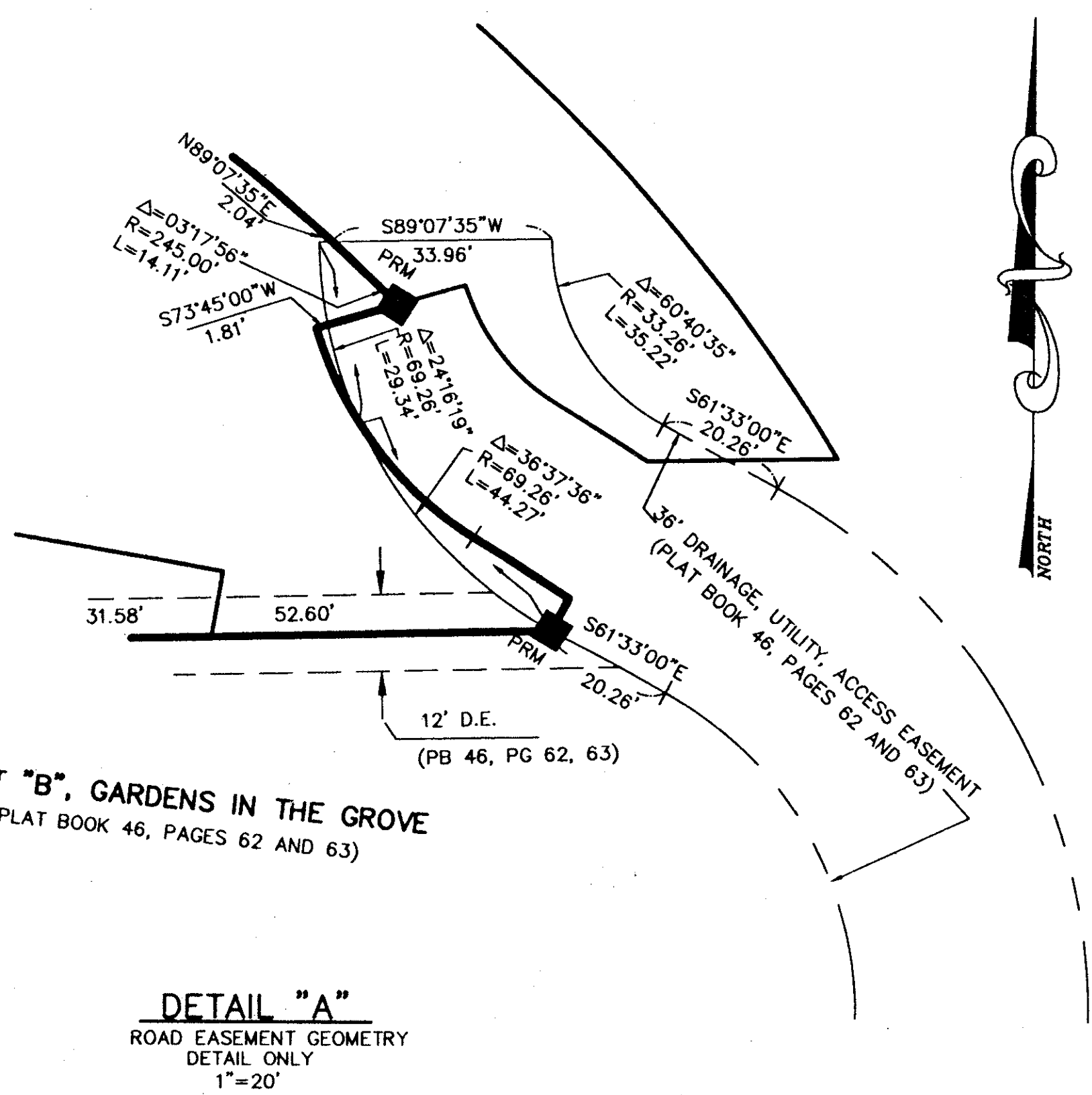
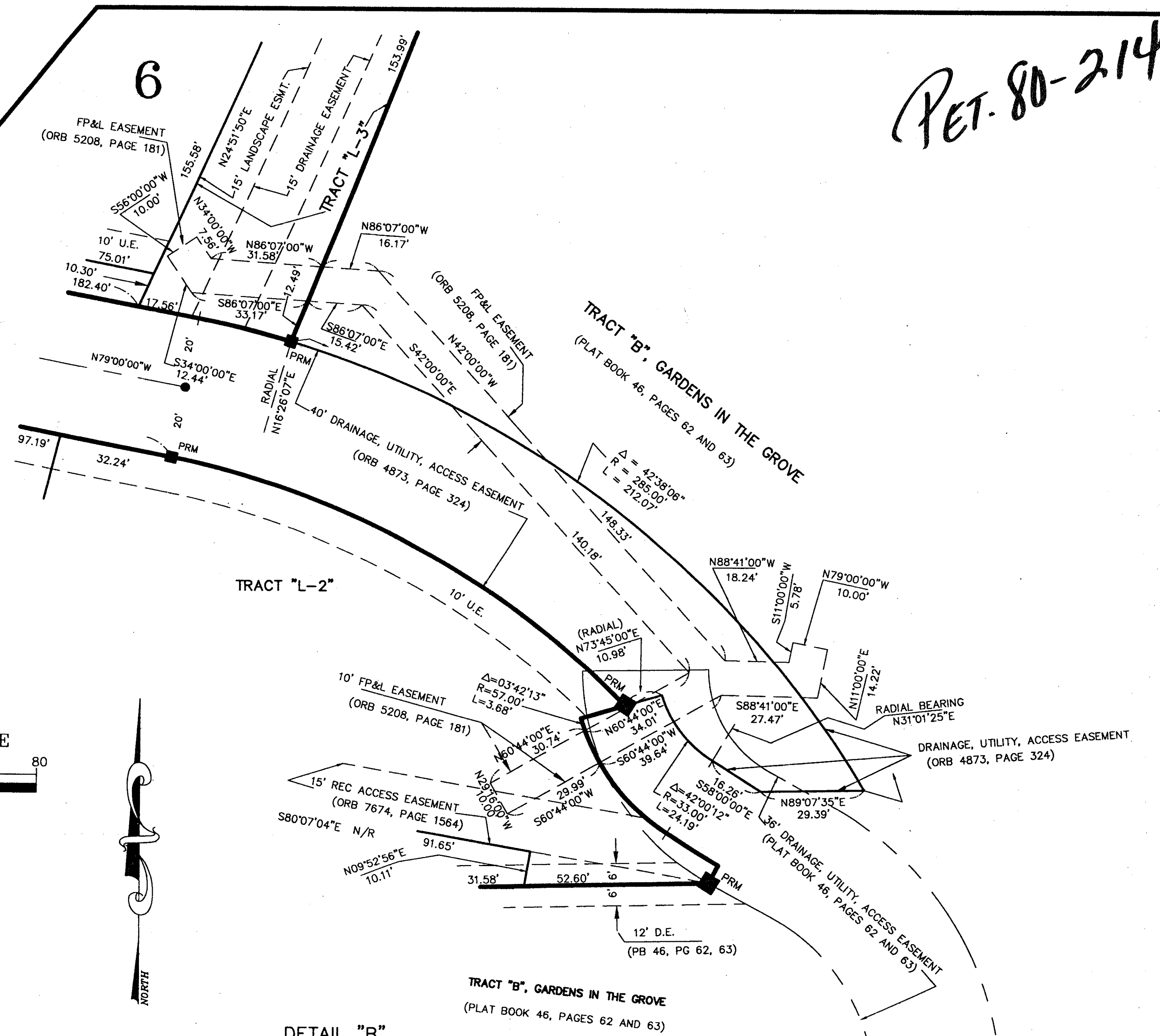


NOTES COORDINATES, BEARINGS AND DISTANCES

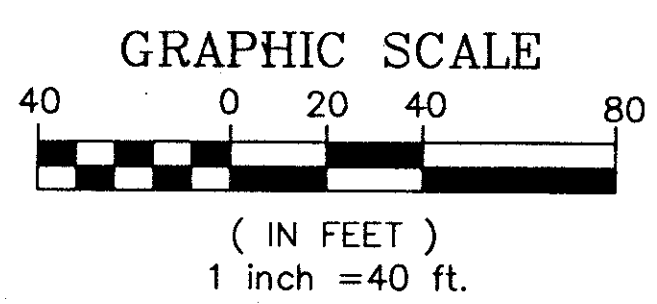
COORDINATES SHOWN ARE GRID
DATUM = NAD 83 1990 ADJUSTMENT
ZONE = FLORIDA EAST
LINEAR UNIT = US SURVEY FEET
COORDINATE SYSTEM 1983 STATE PLANE
TRANSVERSE MERCATOR PROJECTION
ALL DISTANCES ARE GROUND
SCALE FACTOR = 1.0000265
GROUND DISTANCE X SCALE FACTOR = GRID DISTANCE
N87°30'00"E (PLAT BEARING) 00°02'59" = BEARING ROTATION (CLOCKWISE)
N87°32'59"E (GRID BEARING) = BEARING ROTATION (PLAT TO GRID)
NORTH LINE "GARDENS IN THE GROVE"

PLAT TIE
N.T.S.

PET. 80-214



DETAIL "A"
ROAD EASEMENT GEOMETRY
DETAIL ONLY
1"=20'



DETAIL "B"
EASEMENT GEOMETRY
DETAIL ONLY
1"=20'

0209-010

80/52

Handwritten notes in a box:
SUBDIVISION * GARDENS IN THE GROVE
BOOK 46, PAGE 52
FLOOD ZONE B
TRAC # 24
ZONING RS-3C
TIP CODE
PLAT NAME
PLANTATION