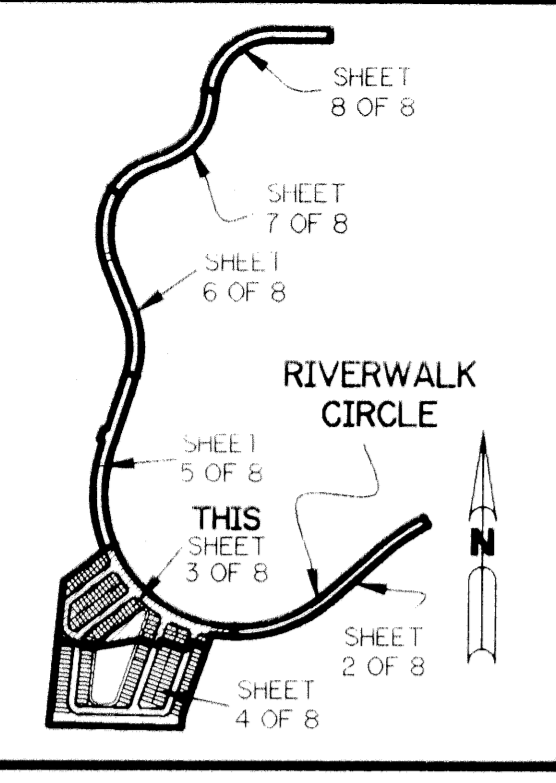


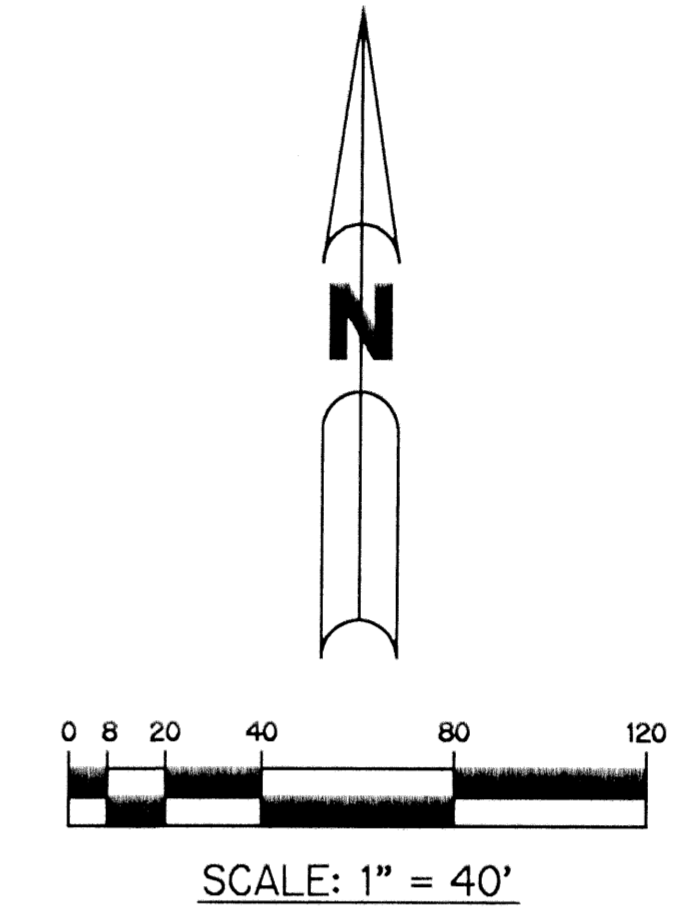
# RIVERWALK - PLAT SIX

A PARCEL OF LAND LYING IN SECTION 21, TOWNSHIP 43 SOUTH, RANGE 42 EAST, CITY OF WEST PALM BEACH, PALM BEACH COUNTY, FLORIDA.

SHEET 3 OF 8 MAY, 1997

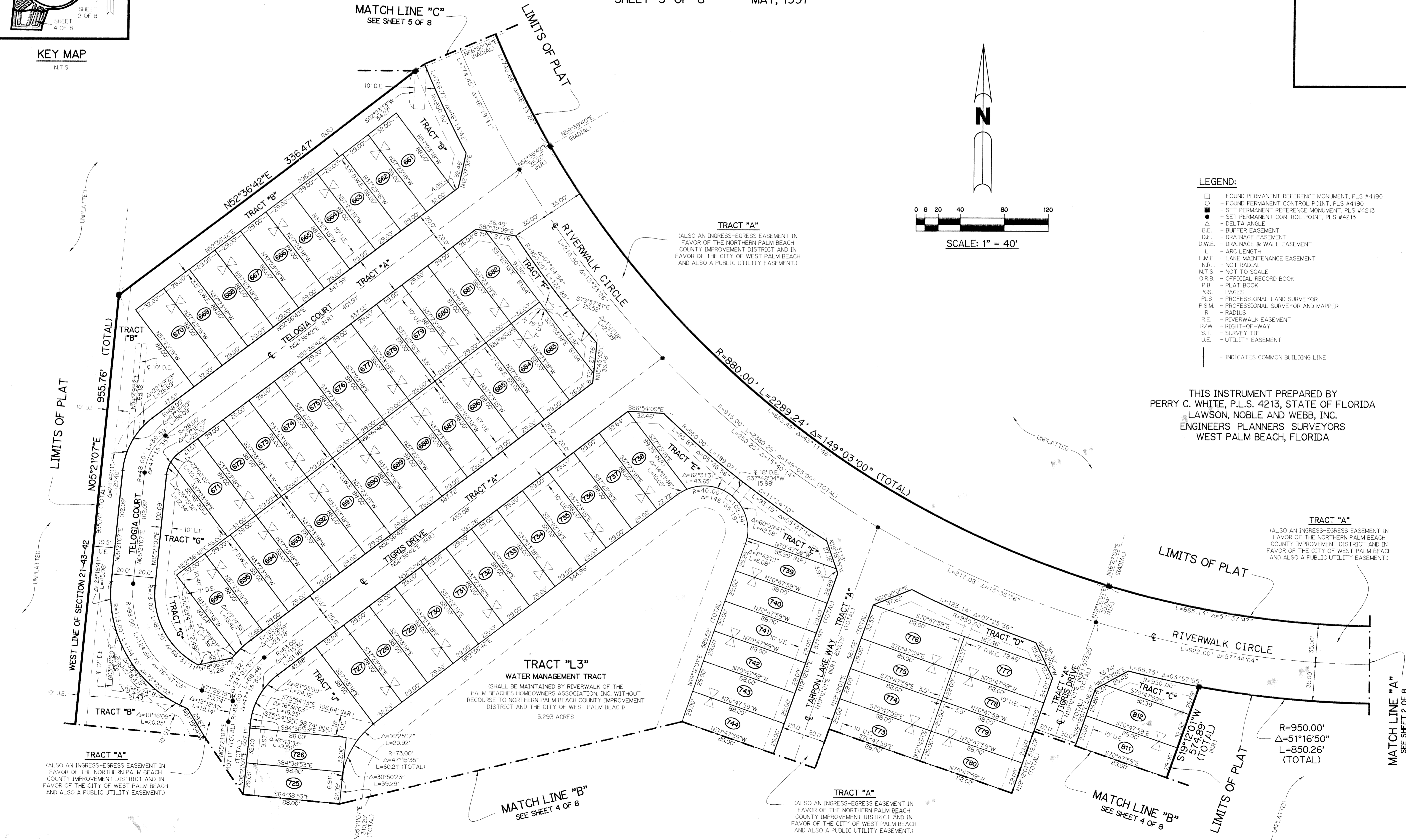


KEY MAP  
N.T.S.



**LEGEND:**

- - FOUND PERMANENT REFERENCE MONUMENT, PLS #4190
- - FOUND PERMANENT CONTROL POINT, PLS #4190
- - SET PERMANENT REFERENCE MONUMENT, PLS #4213
- - SET PERMANENT CONTROL POINT, PLS #4213
- △ - DELTA ANGLE
- B.E. - BUFFER EASEMENT
- D.E. - DRAINAGE EASEMENT
- D.W.E. - DRAINAGE & WALL EASEMENT
- L - ARC LENGTH
- L.M.E. - LAKE MAINTENANCE EASEMENT
- N.R. - NOT RADIAL
- N.T.S. - NOT TO SCALE
- O.R.B. - OFFICIAL RECORD BOOK
- P.B. - PLAT BOOK
- P.G.S. - PAGES
- P.L.S. - PROFESSIONAL LAND SURVEYOR
- P.S.M. - PROFESSIONAL SURVEYOR AND MAPPER
- R - RADIUS
- R.E. - RIVERWALK EASEMENT
- R/W - RIGHT-OF-WAY
- S.T. - SURVEY TIE
- U.E. - UTILITY EASEMENT
- - - - - INDICATES COMMON BUILDING LINE



THIS INSTRUMENT PREPARED BY  
PERRY C. WHITE, P.L.S. 4213, STATE OF FLORIDA  
LAWSON, NOBLE AND WEBB, INC.  
ENGINEERS PLANNERS SURVEYORS  
WEST PALM BEACH, FLORIDA

TRACT "A"  
(ALSO AN INGRESS-EGRESS EASEMENT IN FAVOR OF THE NORTHERN PALM BEACH COUNTY IMPROVEMENT DISTRICT AND IN FAVOR OF THE CITY OF WEST PALM BEACH AND ALSO A PUBLIC UTILITY EASEMENT.)

TRACT "L3"  
WATER MANAGEMENT TRACT  
(SHALL BE MAINTAINED BY RIVERWALK OF THE PALM BEACHES HOMEOWNERS ASSOCIATION, INC. WITHOUT RECOURSE TO NORTHERN PALM BEACH COUNTY IMPROVEMENT DISTRICT AND THE CITY OF WEST PALM BEACH)  
3.293 ACRES

TRACT "A"  
(ALSO AN INGRESS-EGRESS EASEMENT IN FAVOR OF THE NORTHERN PALM BEACH COUNTY IMPROVEMENT DISTRICT AND IN FAVOR OF THE CITY OF WEST PALM BEACH AND ALSO A PUBLIC UTILITY EASEMENT.)

TRACT "A"  
(ALSO AN INGRESS-EGRESS EASEMENT IN FAVOR OF THE NORTHERN PALM BEACH COUNTY IMPROVEMENT DISTRICT AND IN FAVOR OF THE CITY OF WEST PALM BEACH AND ALSO A PUBLIC UTILITY EASEMENT.)

SUBDIVISION \* RIVERWALK PLAT SIX  
 BOOK 80  
 FLOOD ZONE  
 QUAD \*  
 SE  
 PUD NAME  
 PAGE 47  
 FLOOD MAP \*  
 ZONING  
 CITY OF WEST PALM BEACH  
 870