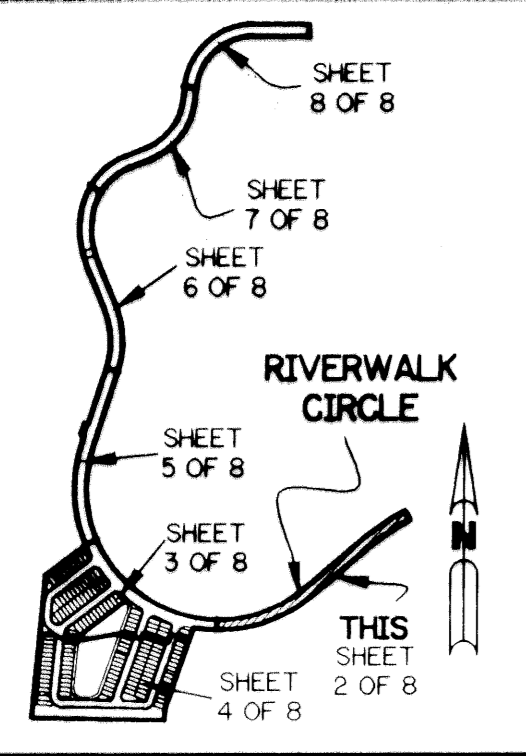


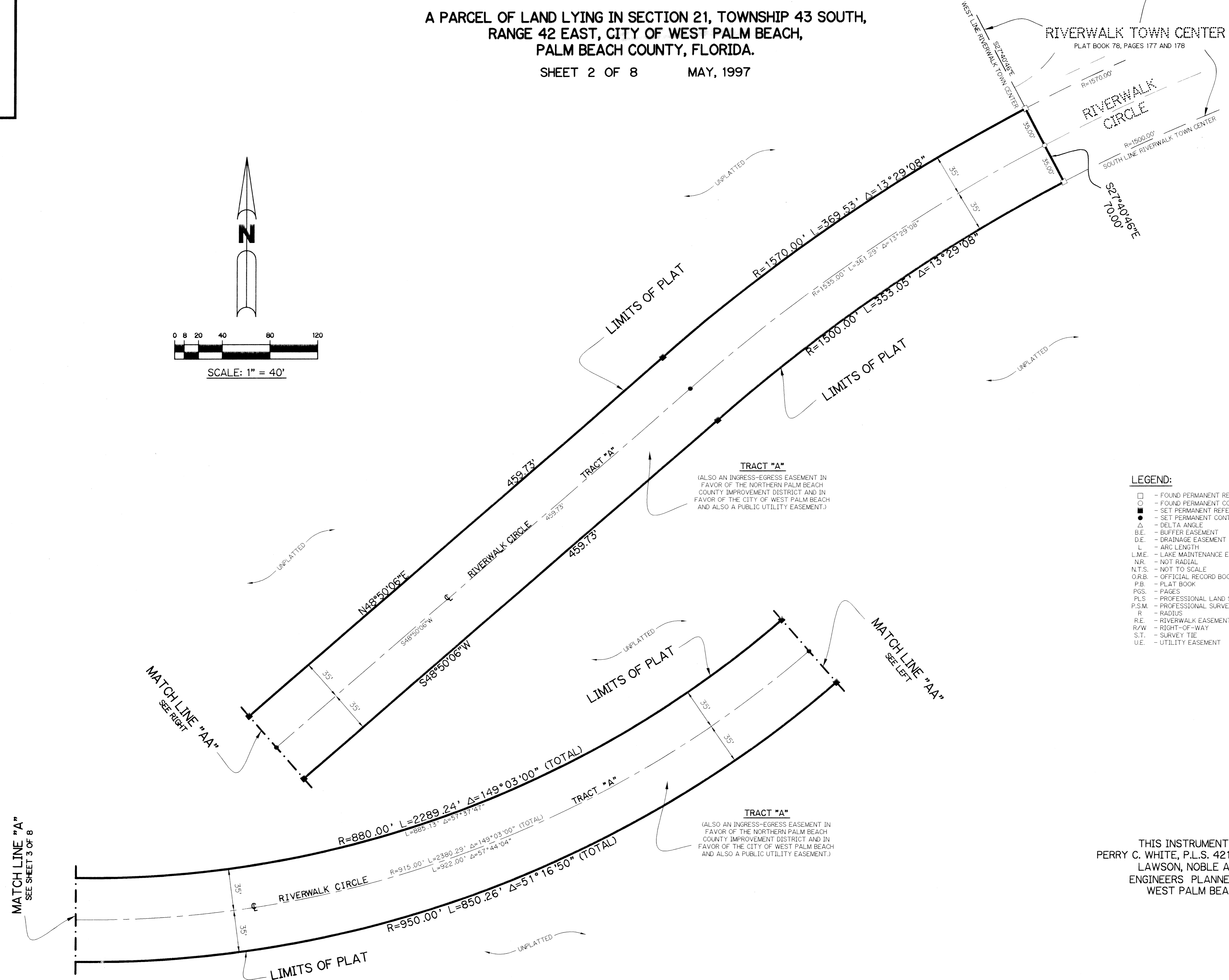
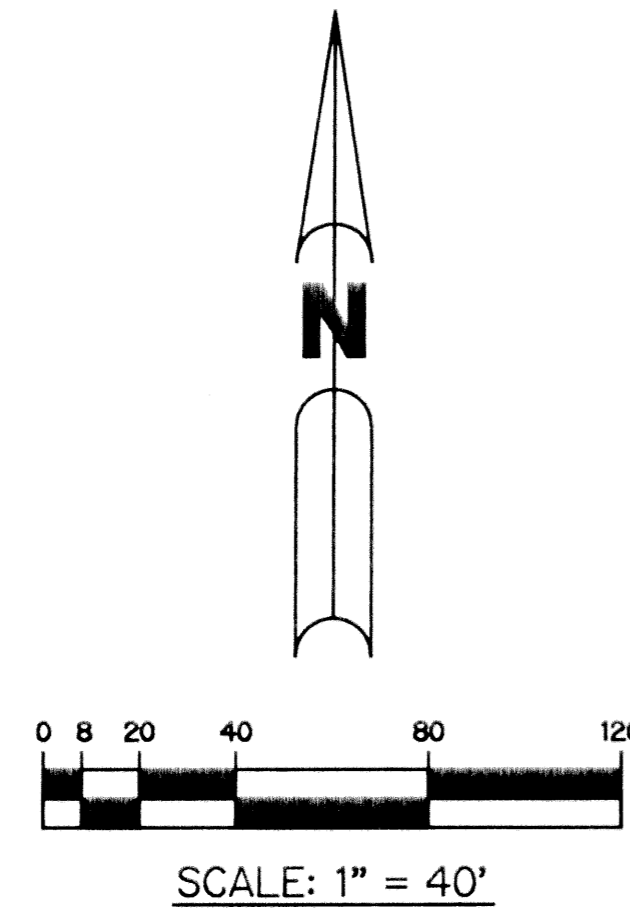
RIVERWALK - PLAT SIX

A PARCEL OF LAND LYING IN SECTION 21, TOWNSHIP 43 SOUTH,
RANGE 42 EAST, CITY OF WEST PALM BEACH,
PALM BEACH COUNTY, FLORIDA.

SHEET 2 OF 8 MAY, 1997



KEY MAP
N.T.S.



LEGEND:

- - FOUND PERMANENT REFERENCE MONUMENT, PLS #4190
- - FOUND PERMANENT CONTROL POINT, PLS #4190
- - SET PERMANENT REFERENCE MONUMENT, PLS #4213
- - SET PERMANENT CONTROL POINT, PLS #4213
- Δ - DELTA ANGLE
- B.E. - BUFFER EASEMENT
- D.E. - DRAINAGE EASEMENT
- L - ARC LENGTH
- L.M.E. - LAKE MAINTENANCE EASEMENT
- N.R. - NOT RADIAL
- N.T.S. - NOT TO SCALE
- O.R.B. - OFFICIAL RECORD BOOK
- P.B. - PLAT BOOK
- PGS. - PAGES
- PLS - PROFESSIONAL LAND SURVEYOR
- P.S.M. - PROFESSIONAL SURVEYOR AND MAPPER
- R - RADIUS
- R.E. - RIVERWALK EASEMENT
- R/W - RIGHT-OF-WAY
- S.T. - SURVEY TIE
- U.E. - UTILITY EASEMENT

THIS INSTRUMENT PREPARED BY
 PERRY C. WHITE, P.L.S. 4213, STATE OF FLORIDA
 LAWSON, NOBLE AND WEBB, INC.
 ENGINEERS PLANNERS SURVEYORS
 WEST PALM BEACH, FLORIDA

SUBDIVISION * RIVERWALK PLAT SIX
 BOOK 80
 PAGE 46
 FLOOD MAP *
 FLOOD ZONE
 ZONING
 QUAD *
 SE
 ZIP CODE
 PUD NAME CITY OF WEST PALM BEACH
 T43
 870