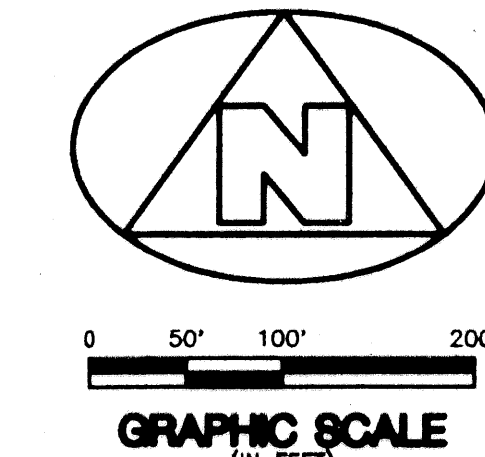
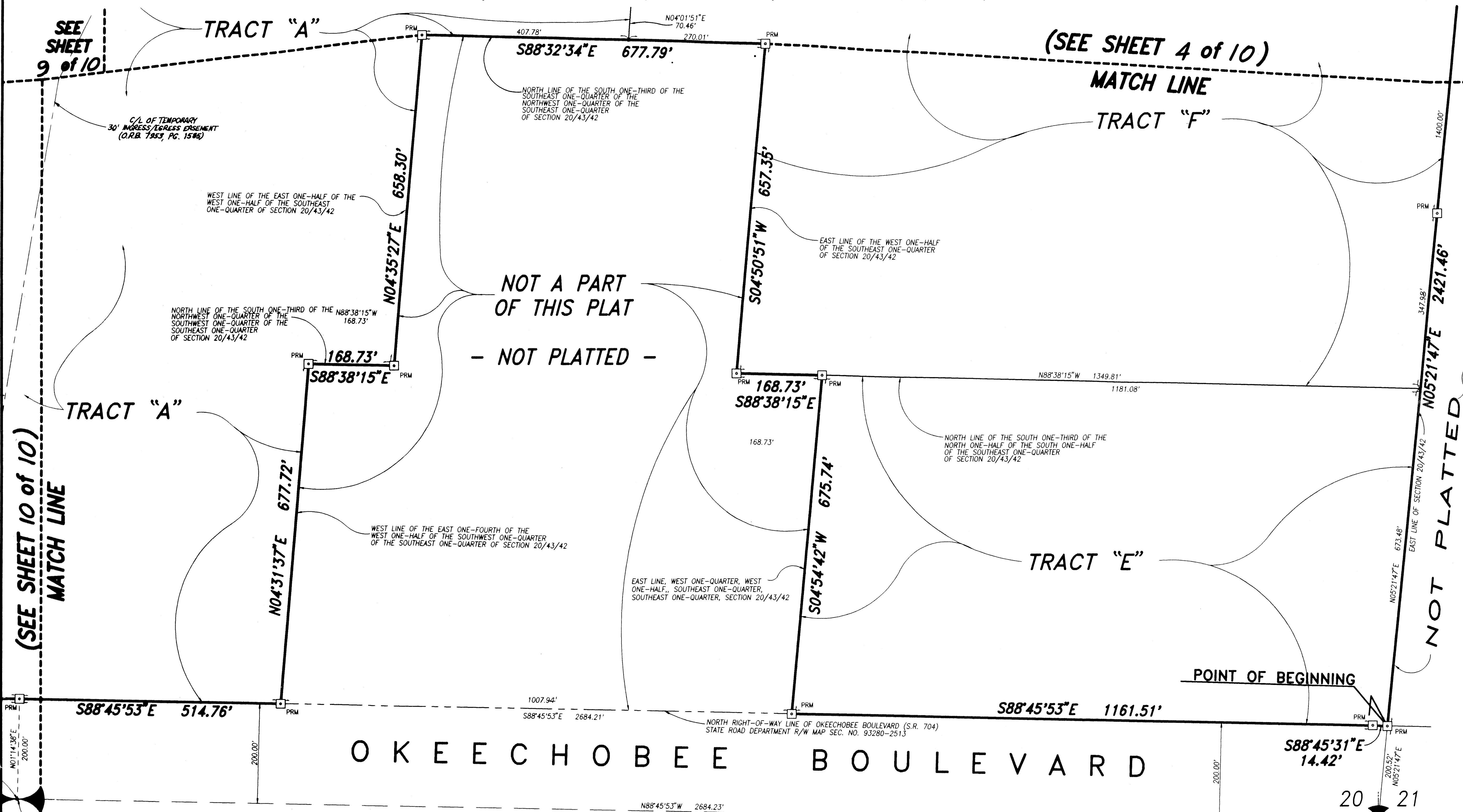


(A RESIDENTIAL PLANNED DEVELOPMENT)
LYING AND BEING IN SECTION 20, TOWNSHIP 43 SOUTH, RANGE 42 EAST, CITY OF WEST PALM BEACH, PALM BEACH COUNTY, FLORIDA

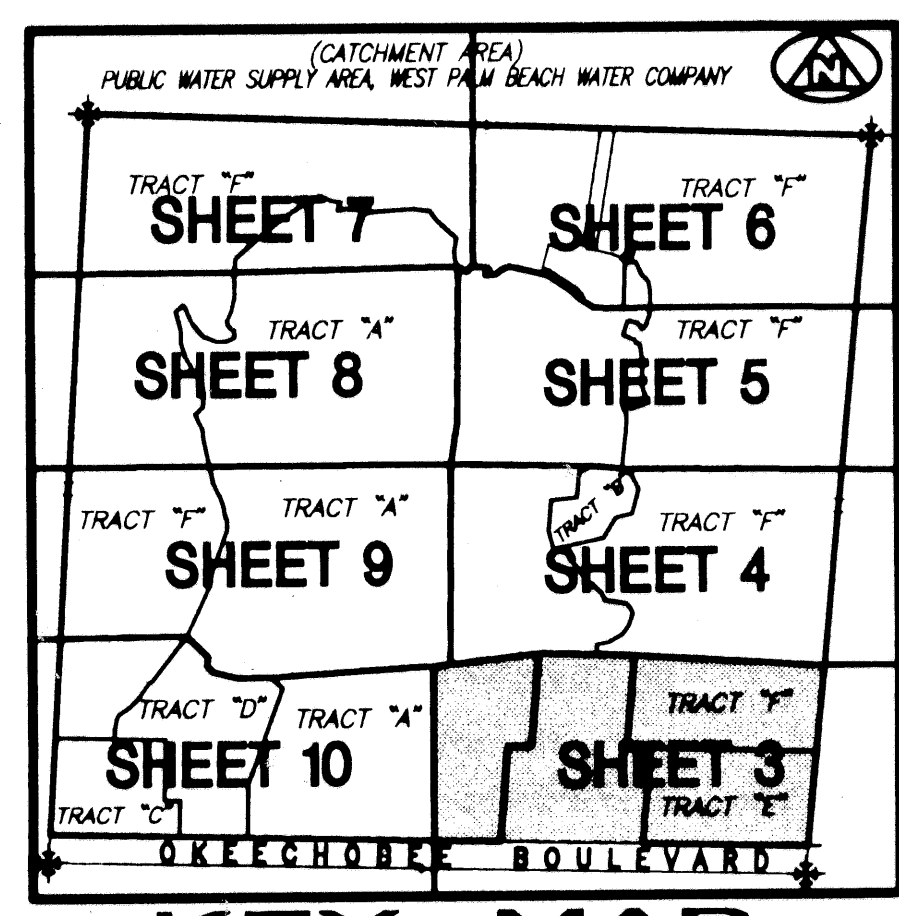


(SEE SHEET 10 of 10)
MATCH LINE

(SEE SHEET 4 of 10)
MATCH LINE

NOT A PART
OF THIS PLAT
- NOT PLATTED -

NOT PLATTED



SURVEYOR'S NOTES AND LEGEND:

1. THE BASE BEARING (BB) FOR THIS PLAT IS THE ASSUMED BEARING OF $S88^{\circ}44'60''E$ ALONG THE SOUTH LINE OF THE SOUTHWEST ONE-QUARTER OF SECTION 20, TOWNSHIP 43 SOUTH, RANGE 42 EAST, AND ALL OTHER BEARINGS ARE RELATIVE THERE TO.
2. C/L DENOTES A CENTERLINE
3. \square PRM DENOTES A SET #2424 PERMANENT REFERENCE MONUMENT (P.R.M.)
4. P.B.CO. DENOTES PALM BEACH COUNTY

POINT OF COMMENCEMENT

SOUTHEAST CORNER - SECTION 20/43/42
FOUND P.B.CO. ENGINEERING DEPARTMENT
CONCRETE MONUMENT AND BRASS DISK

THIS INSTRUMENT WAS PREPARED BY WM. R. VAN CAMPEN, R.L.S., IN AND FOR THE OFFICES OF BENCH MARK LAND SURVEYING & MAPPING, INC., 4152 WEST BLUE HERON BOULEVARD, SUITE 121, RIVIERA BEACH, FLORIDA

BENCH MARK
Land Surveying and Mapping, Inc.
4152 West Blue Heron Blvd, Suite 121, Riviera Beach, FL 33404
Fax: (407) 844-9659 Phone: (407) 848-2102

RECORD PLAT		OAKTON LAKES R.P.D.	
DWN DWG & SEC	FB	DATE	09/01/96
CKD	FILE P156-A.dwg	SCALE	1" = 100'
WO.#	P156	SHEET	3 OF 10

SUBDIVISION * OAKTON LAKES R.P.D.
 BOOK 80
 FLOOD ZONE
 QUAD *
 SE
 PUD NAME * CITY OF WEST PALM BEACH
 ZIP CODE
 TA2870

ONE-QUARTER SECTION CORNER
FOUND P.B.CO. ENGINEERING DEPARTMENT
CONCRETE MONUMENT WITH BRASS DISK