

# OFFICE DEPOT PLAT

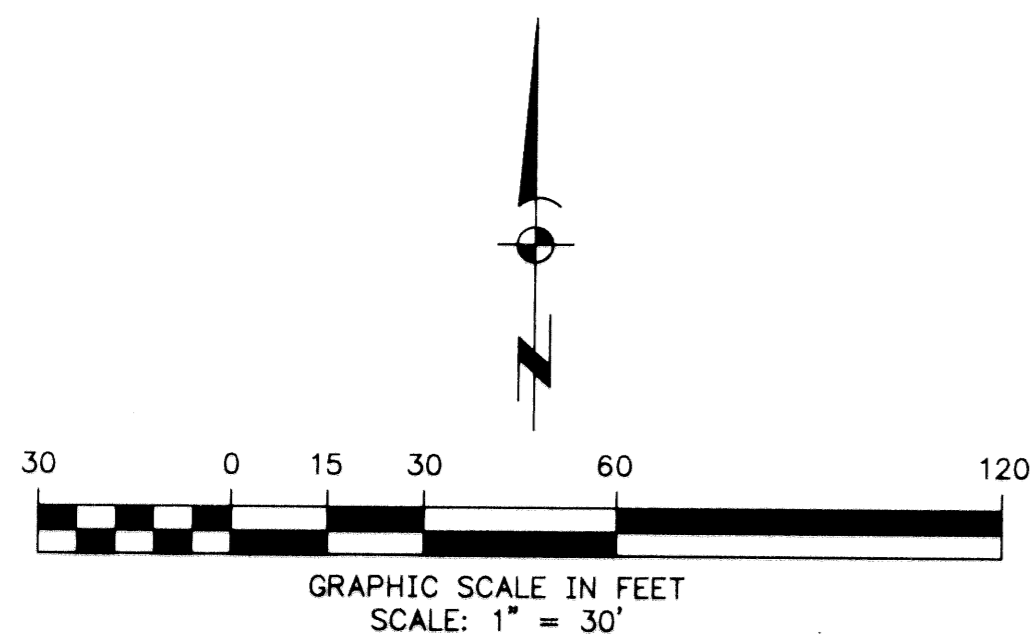
A REPLAT OF LOTS 1 THROUGH 46, LESS THE EAST 52.00 FEET OF LOTS 24 THROUGH 30, BLOCK 7, VILLA RICA SUBDIVISION, AS RECORDED IN PLAT BOOK 14, PAGE 73 OF THE PUBLIC RECORDS OF PALM BEACH COUNTY, FLORIDA, LYING IN SECTION 8, TOWNSHIP 47 SOUTH, RANGE 43 EAST, CITY OF BOCA RATON, PALM BEACH COUNTY, FLORIDA

# 134

STATE OF FLORIDA  
COUNTY OF PALM BEACH  
This plat was filed for record  
at \_\_\_\_\_ this \_\_\_\_\_  
day of \_\_\_\_\_, 1996,  
and duly recorded in Plat Book  
\_\_\_\_\_, Pages \_\_\_\_\_, through  
\_\_\_\_\_.

DOROTHY H. WILKEN  
Clerk of Circuit Court  
By: \_\_\_\_\_

SHEET 2 OF 2

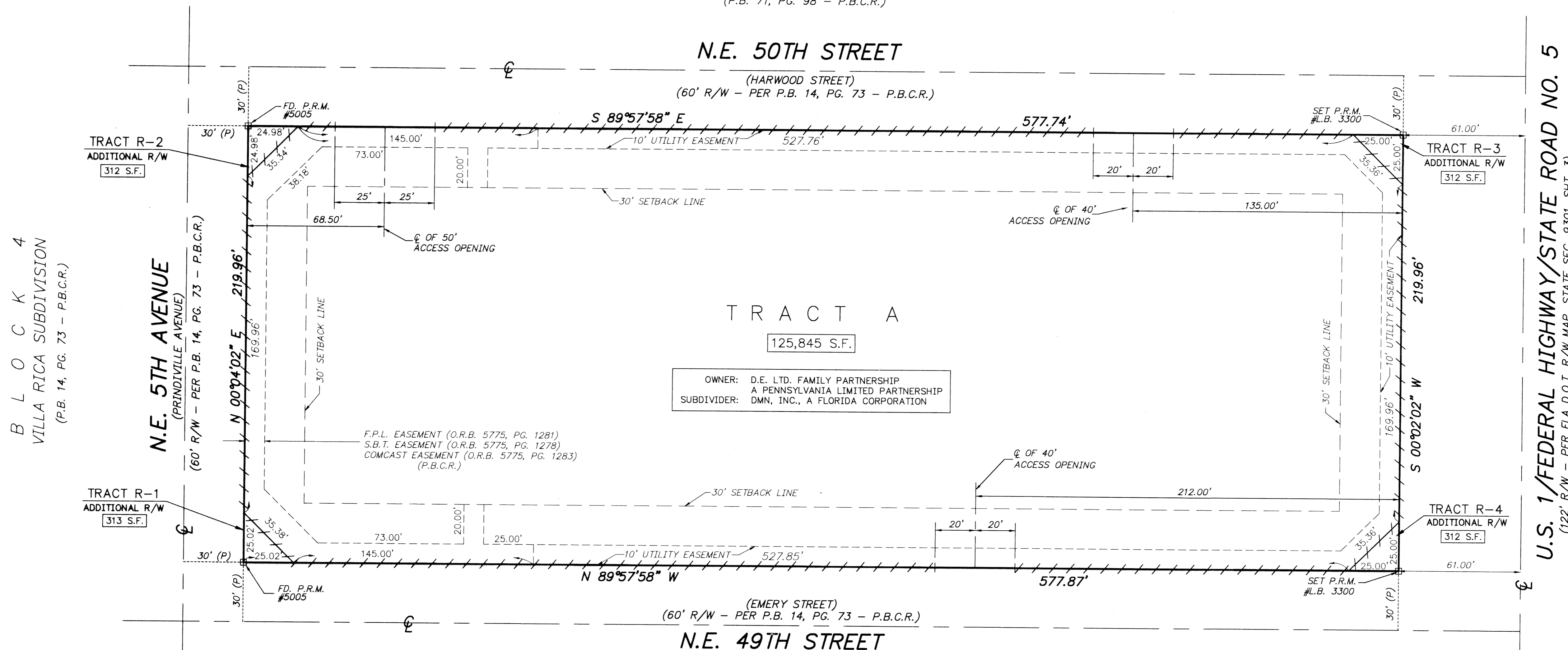


PREPARED BY:  
MICHAEL D. AVIROM, P.L.S.  
**AVIROM-HALL & ASSOCIATES, INC.**  
LAND SURVEYING/LAND DEVELOPMENT CONSULTANTS  
50 S.W. 2nd AVENUE, SUITE 102  
BOCA RATON, FLORIDA 33432  
(561) 392-2594  
SEPTEMBER, 1996

SANCTUARY PLACE  
(P.B. 71, PG. 98 - P.B.C.R.)

N.E. 50TH STREET

(HARWOOD STREET)  
(60' R/W - PER P.B. 14, PG. 73 - P.B.C.R.)



AMENDED PLAT OF VILLA RICA  
(P.B. 29, PG. 50 - P.B.C.R.)

**NOTES:**

- THERE SHALL BE NO BUILDINGS OF ANY KIND OF CONSTRUCTION PLACED ON UTILITY OR DRAINAGE EASEMENTS, EXCEPT DRIVEWAYS AND/OR SIDEWALKS.
- THERE SHALL BE NO TREES OR SHRUBS PLACED ON UTILITY EASEMENTS WHICH ARE PROVIDED FOR WATER AND SEWER USE OR UPON DRAINAGE EASEMENTS. LANDSCAPING ON OTHER UTILITY EASEMENTS SHALL BE ALLOWED ONLY AFTER CONSENT OF ALL UTILITY COMPANIES HAVING THE RIGHT TO OCCUPY THE SAME.
- BEARINGS SHOWN HEREON ARE ASSUMED WITH THE NORTH LINE OF BLOCK 7, HAVING A BEARING OF S89°57'58"E.
- BUILDING SETBACK LINES SHALL BE NO LESS THAN REQUIRED BY THE CITY OF BOCA RATON ZONING REGULATIONS.
- IN INSTANCE WHERE DRAINAGE AND UTILITY EASEMENTS INTERSECT, CONSTRUCTION, OPERATION, AND MAINTENANCE OF UTILITIES WITHIN THESE AREAS OF INTERSECTION SHALL NOT INTERFERE WITH THE CONSTRUCTION, OPERATION, AND MAINTENANCE OF DRAINAGE FACILITIES.
- DIMENSIONS, SHOWN HEREON ARE IN FEET AND DECIMAL PARTS THEREOF AND ARE BASED ON THE DEFINITION OF FOOT AS ADOPTED BY THE UNITED STATES BUREAU OF STANDARDS AND REFER TO THE HORIZONTAL PLANE.
- ABBREVIATION LEGEND: C = CENTERLINE; FLA. D.O.T. = FLORIDA DEPARTMENT OF TRANSPORTATION; F.P.L. = FLORIDA POWER & LIGHT COMPANY; O.R.B. = OFFICIAL RECORDS BOOK; P.B.C.R. = PALM BEACH COUNTY RECORDS; P. = PLAT; P.R.M. = PERMANENT REFERENCE MONUMENT; R/W = RIGHT-OF-WAY; S.B.T. = SOUTHERN BELL TELEPHONE; SEC. = SECTION; S.F. = SQUARE FEET.

**LEGEND**

- SET P.R.M. UNLESS NOTED OTHERWISE
- INDICATES NON-ACCESS LINE

**NOTICE:**

THERE MAY BE ADDITIONAL RESTRICTIONS THAT ARE NOT RECORDED ON THIS PLAT THAT MAY BE FOUND IN THE PUBLIC RECORDS OF PALM BEACH COUNTY.

**ACREAGE TABULATION**

TRACT A	125,845 SQ. FT.	2.889 ACRES
TRACT R-1	312 SQ. FT.	0.007 ACRES
TRACT R-2	312 SQ. FT.	0.007 ACRES
TRACT R-3	312 SQ. FT.	0.007 ACRES
TRACT R-4	312 SQ. FT.	0.007 ACRES
<b>TOTAL</b>	<b>127,093 SQ. FT.</b>	<b>2.917 ACRES</b>

SUBDIVISION # OFFICE DEPOT  
 BOOK 78 PAGE 134  
 FLOOD ZONE FLOOD MAP #  
 QUAD # ZONING  
 SE ZIP CODE  
 PUD NAME CITY OF BOCA RATON  
 TAZ-478