

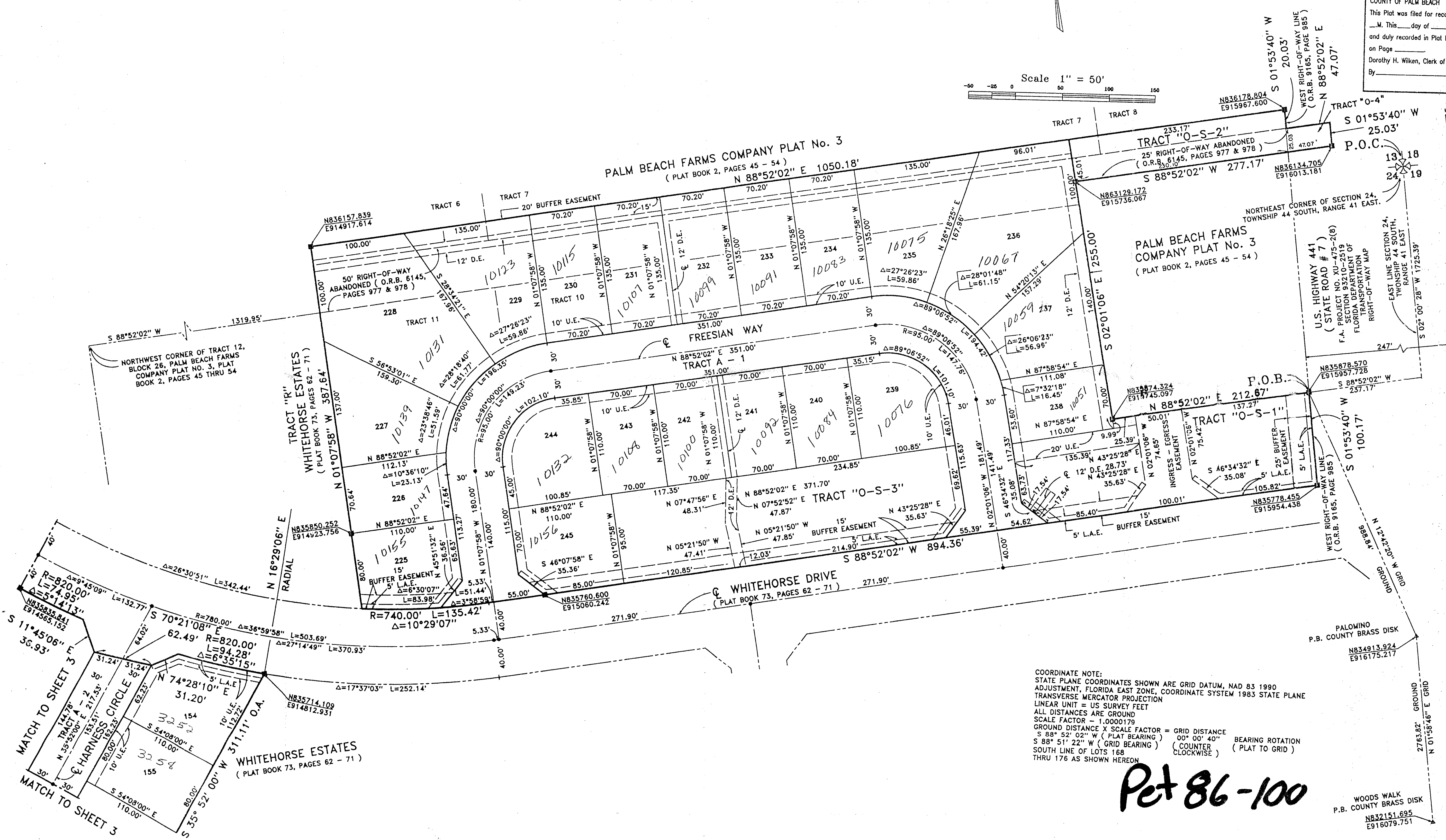
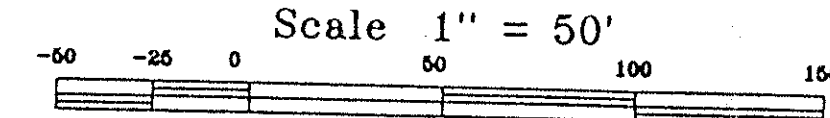
WHITEHORSE ESTATES PLAT 2
 PALM VIEW LAKES A PLANNED UNIT DEVELOPMENT
 BEING A REPLAT OF A PORTION OF TRACTS 6, 7, 8, 9, 10, AND 11, BLOCK 26,
 PALM BEACH FARMS COMPANY PLAT No. 3, AS RECORDED IN PLAT BOOK 2,
 PAGES 45 THRU 54, PUBLIC RECORDS OF PALM BEACH COUNTY, FLORIDA,
 AND A PORTION OF WHITEHORSE ESTATES AS RECORDED IN PLAT BOOK 73,
 PAGES 62 THRU 71, PUBLIC RECORDS OF PALM BEACH COUNTY, FLORIDA,
 LYING IN SECTION 24, TOWNSHIP 44 SOUTH, RANGE 41 EAST, PALM
 BEACH COUNTY, FLORIDA.
 SHEET 2 OF 4 SHEETS

JANUARY 1996

0517-002

93

STATE OF FLORIDA
 COUNTY OF PALM BEACH
 This Plat was filed for record at
 M. This day of _____, 19____
 and duly recorded in Plat Book No. _____
 on Page _____
 Dorothy H. Wilken, Clerk of the Circuit Court
 By _____ D.C.

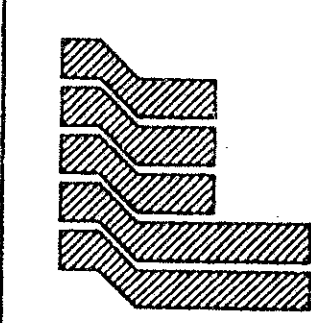


COORDINATE NOTE:
 STATE PLANE COORDINATES SHOWN ARE GRID DATUM, NAD 83 1990
 ADJUSTMENT, FLORIDA EAST ZONE, COORDINATE SYSTEM 1983 STATE PLANE
 TRANSVERSE MERCATOR PROJECTION
 LINEAR UNIT = US SURVEY FEET
 ALL DISTANCES ARE GROUND
 SCALE FACTOR = 1.0000179
 GROUND DISTANCE X SCALE FACTOR = GRID DISTANCE
 S 88° 52' 02" W (PLAT BEARING) 00° 00' 40" BEARING ROTATION
 S 88° 51' 22" W (GRID BEARING) (COUNTER CLOCKWISE) (PLAT TO GRID)
 SOUTH LINE OF LOTS 168
 THRU 176 AS SHOWN HEREON

Pet 86-100

SUBDIVISION: Whitehorse Estates
 BOOK: 78 PAGE: 93
 FLOOR MAP # 10025
 ZONING: R-15
 ZIP CODE: 33414
 RD: 86-100
 PLAT NAME: Palm View Lakes
 TAZ - 736

0517-002 78/93



Landmark Surveying & Mapping Inc.
 1850 FOREST HILL BOULEVARD
 PH. (407)433-5405 SUITE 100 W.P.B. FLORIDA
WHITEHORSE ESTATES PLAT 2