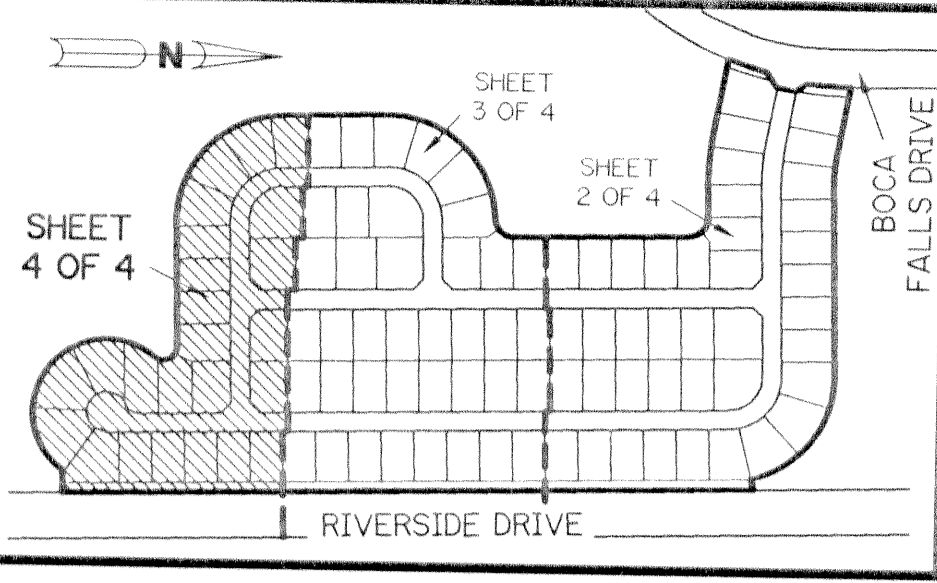


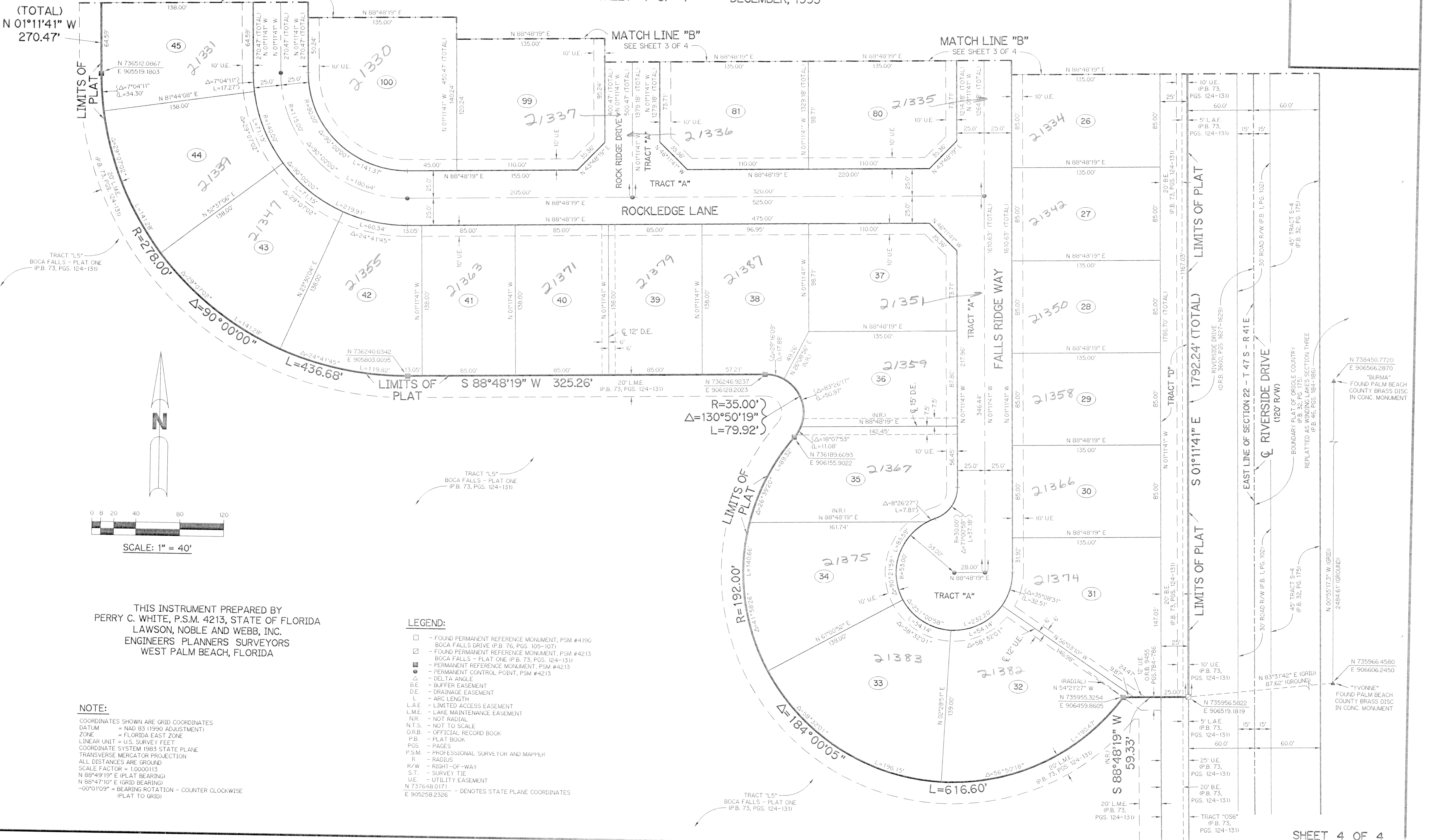
BOCA FALLS - PARCEL "S"

BEING A REPLAT OF A PORTION OF PARCEL "Z" ACCORDING TO THE PLAT OF BOCA FALLS - PLAT ONE AS RECORDED IN PLAT BOOK 73, PAGES 124 THROUGH 131, INCLUSIVE, AND ALL OF TRACTS "OS1" AND "OS2" ACCORDING TO THE PLAT OF BOCA FALLS DRIVE- NORTH HALF OF BOCA FALLS DRIVE AS RECORDED IN PLAT BOOK 76, PAGES 105 THROUGH 107, INCLUSIVE, BOTH OF THE PUBLIC RECORDS OF PALM BEACH COUNTY, FLORIDA. LYING IN SECTION 22, TOWNSHIP 47 SOUTH, RANGE 41 EAST.



KEY MAP

SHEET 4 OF 4 DECEMBER, 1995



(TOTAL)
N 01°11'41" W
270.47'

LIMITS OF PLAT

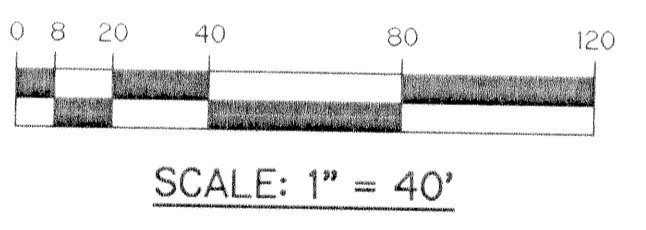
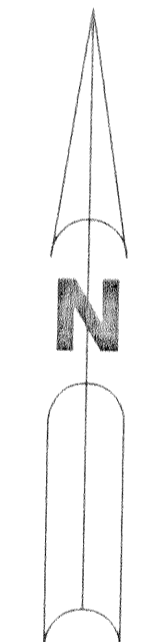
LIMITS OF PLAT

LIMITS OF PLAT

LIMITS OF PLAT

LIMITS OF PLAT

LIMITS OF PLAT



SCALE: 1" = 40'

THIS INSTRUMENT PREPARED BY
PERRY C. WHITE, P.S.M. 4213, STATE OF FLORIDA
LAWSON, NOBLE AND WEBB, INC.
ENGINEERS PLANNERS SURVEYORS
WEST PALM BEACH, FLORIDA

- LEGEND:**
- - FOUND PERMANENT REFERENCE MONUMENT, PSM #4190 BOCA FALLS DRIVE (P.B. 76, PGS. 105-107)
 - - FOUND PERMANENT REFERENCE MONUMENT, PSM #4213 BOCA FALLS - PLAT ONE (P.B. 73, PGS. 124-131)
 - - PERMANENT REFERENCE MONUMENT, PSM #4213
 - - PERMANENT CONTROL POINT, PSM #4213
 - △ - DELTA ANGLE
 - B.E. - BUFFER EASEMENT
 - D.E. - DRAINAGE EASEMENT
 - L - ARC LENGTH
 - L.A.E. - LIMITED ACCESS EASEMENT
 - L.M.E. - LAKE MAINTENANCE EASEMENT
 - N.R. - NOT RADIAL
 - N.T.S. - NOT TO SCALE
 - O.R.B. - OFFICIAL RECORD BOOK
 - P.B. - PLAT BOOK
 - P.G.S. - PAGES
 - P.S.M. - PROFESSIONAL SURVEYOR AND MAPPER
 - R - RADIUS
 - R/W - RIGHT-OF-WAY
 - S.T. - SURVEY TIE
 - U.E. - UTILITY EASEMENT
 - N 737648.0171 - DENOTES STATE PLANE COORDINATES E 905258.2326

NOTE:

COORDINATES SHOWN ARE GRID COORDINATES
DATUM = NAD 83 (1990 ADJUSTMENT)
ZONE = FLORIDA EAST ZONE
LINEAR UNIT = U.S. SURVEY FEET
COORDINATE SYSTEM 1983 STATE PLANE
TRANSVERSE MERCATOR PROJECTION
ALL DISTANCES ARE GROUND
SCALE FACTOR = 1.000013
N 88°49'19" E (PLAT BEARING)
N 88°47'10" E (GRID BEARING)
-00°01'09" = BEARING ROTATION - COUNTER CLOCKWISE (PLAT TO GRID)