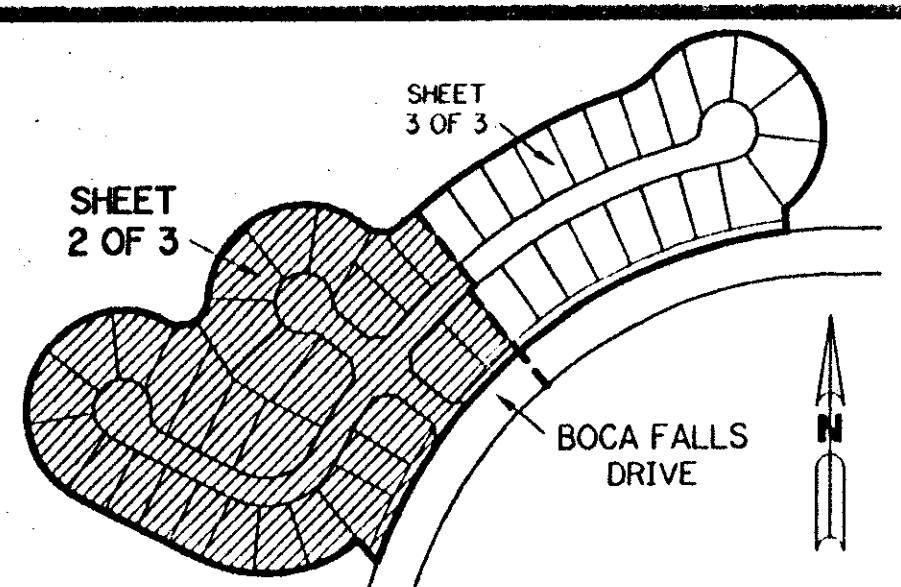


A PART OF THE BAY WINDS PLANNED UNIT DEVELOPMENT

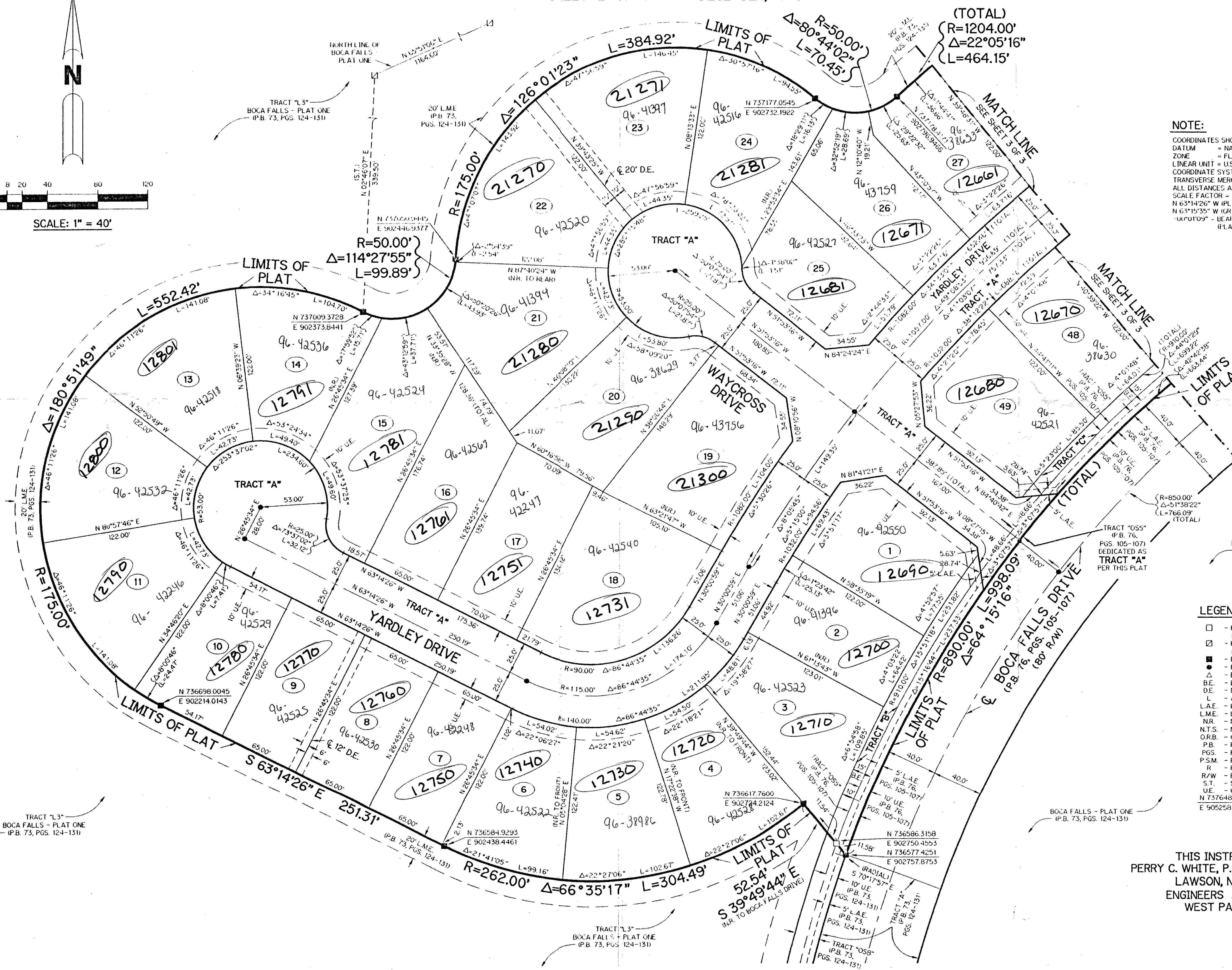
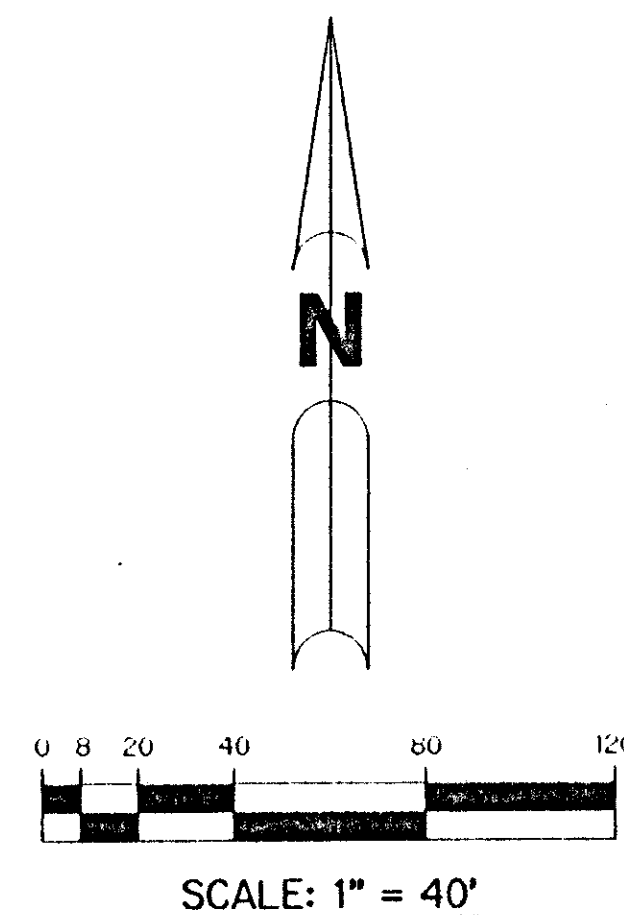
BOCA FALLS - PARCEL "P"

BEING A REPLAT OF A PORTION OF PARCEL "Z" ACCORDING TO THE PLAT OF BOCA FALLS - PLAT ONE AS RECORDED IN PLAT BOOK 73, PAGES 124 THROUGH 131, INCLUSIVE, AND ALL OF TRACT "OS5" ACCORDING TO THE PLAT OF BOCA FALLS DRIVE - NORTH HALF OF BOCA FALLS DRIVE AS RECORDED IN PLAT BOOK 76, PAGES 105 THROUGH 107, INCLUSIVE, BOTH OF THE PUBLIC RECORDS OF PALM BEACH COUNTY, FLORIDA. LYING IN SECTION 22, TOWNSHIP 47 SOUTH, RANGE 41 EAST.

SHEET 2 OF 3 DECEMBER, 1995



KEY MAP N.T.S.



NOTE:
 COORDINATES SHOWN ARE GRID COORDINATES
 DATUM = NAD 83 (1990 ADJUSTMENT)
 ZONE = FLORIDA EAST ZONE
 LINEAR UNIT = U.S. SURVEY FEET
 COORDINATE SYSTEM 1983 STATE PLANE
 TRANSVERSE MERCATOR PROJECTION
 ALL DISTANCES ARE GROUND
 SCALE FACTOR = 1.0000113
 N 63°14'26" W (PLAT BEARING)
 N 63°15'35" W (GRID BEARING)
 (GPO109) = BEARING ROTATION - COUNTERCLOCKWISE (PLAT TO GRID)

LEGEND:

- - FOUND PERMANENT REFERENCE MONUMENT, PSM #4190
- - BOCA FALLS DRIVE (P.B. 76, PGS. 105-107)
- - FOUND PERMANENT REFERENCE MONUMENT, PSM #4213
- - BOCA FALLS - PLAT ONE (P.B. 73, PGS. 124-131)
- - PERMANENT REFERENCE MONUMENT, PSM #4213
- - PERMANENT CONTROL POINT, PSM #4213
- Δ - DELTA ANGLE
- BE - BUFFER EASEMENT
- DE - DRAINAGE EASEMENT
- L - ARC LENGTH
- L.A.E. - LIMITED ACCESS EASEMENT
- L.M.E. - LAKE MAINTENANCE EASEMENT
- N.R. - NOT RADIAL
- N.T.S. - NOT TO SCALE
- O.R.B. - OFFICIAL RECORD BOOK
- P.B. - PLAT BOOK
- PGS. - PAGES
- P.S.M. - PROFESSIONAL SURVEYOR AND MAPPER
- R - RADIUS
- R/W - RIGHT-OF-WAY
- S.T. - SURVEY TIE
- U.E. - UTILITY EASEMENT
- N 73°16'48.0171" E 905258.2326' - DENOTES STATE PLANE COORDINATES

THIS INSTRUMENT PREPARED BY
 PERRY C. WHITE, P.S.M. 4213, STATE OF FLORIDA
 LAWSON, NOBLE AND WEBB, INC.
 ENGINEERS PLANNERS SURVEYORS
 WEST PALM BEACH, FLORIDA

C:\WORK\0187\0187.PLOT 6-13-96 8:11:44 AM EST