

# Boynton Waters West I

AT LAKES OF BOYNTON BEACH PUD - POD C

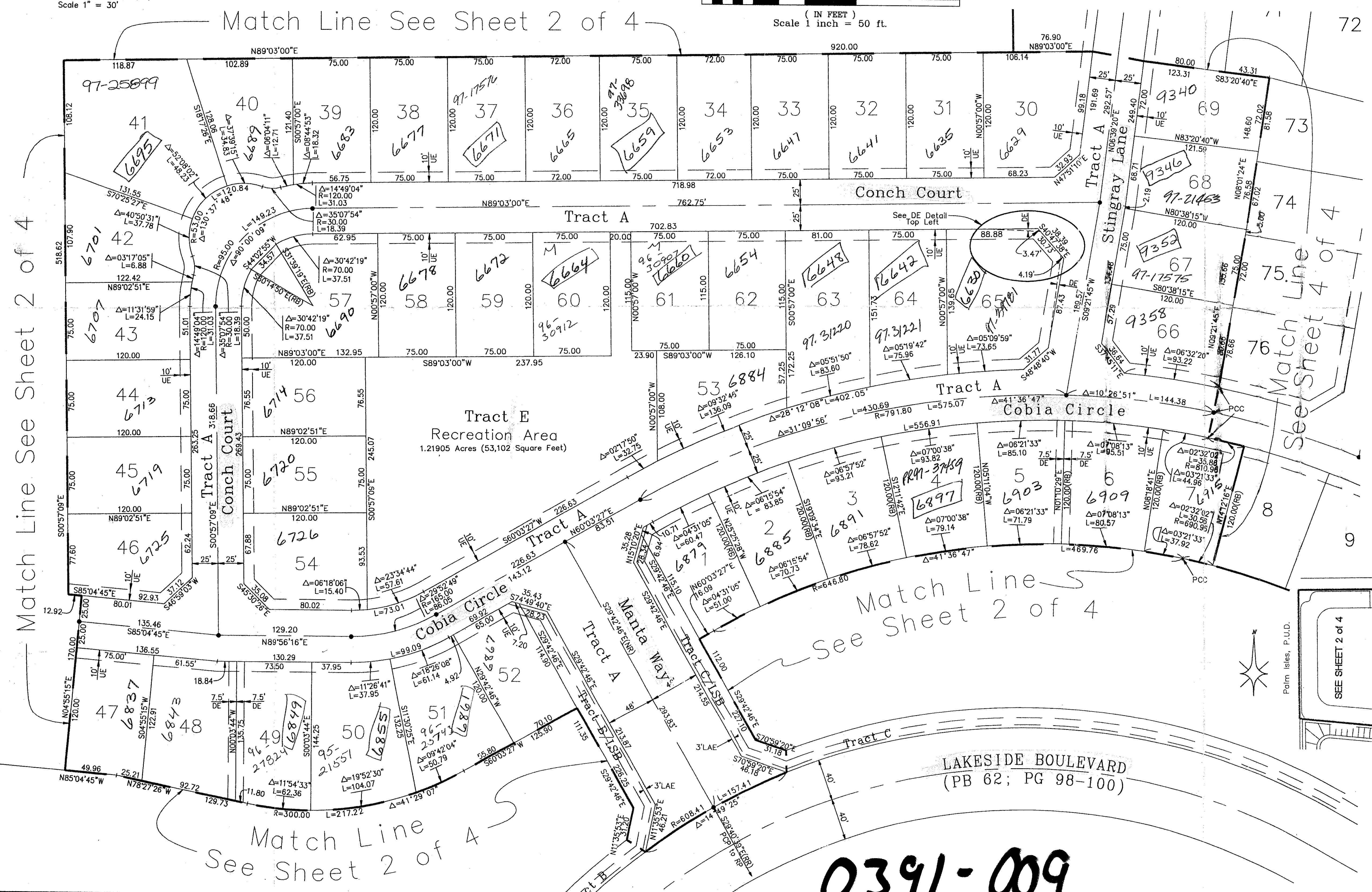
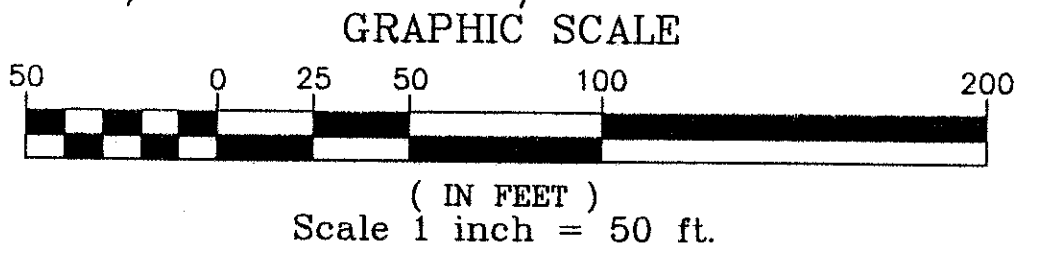
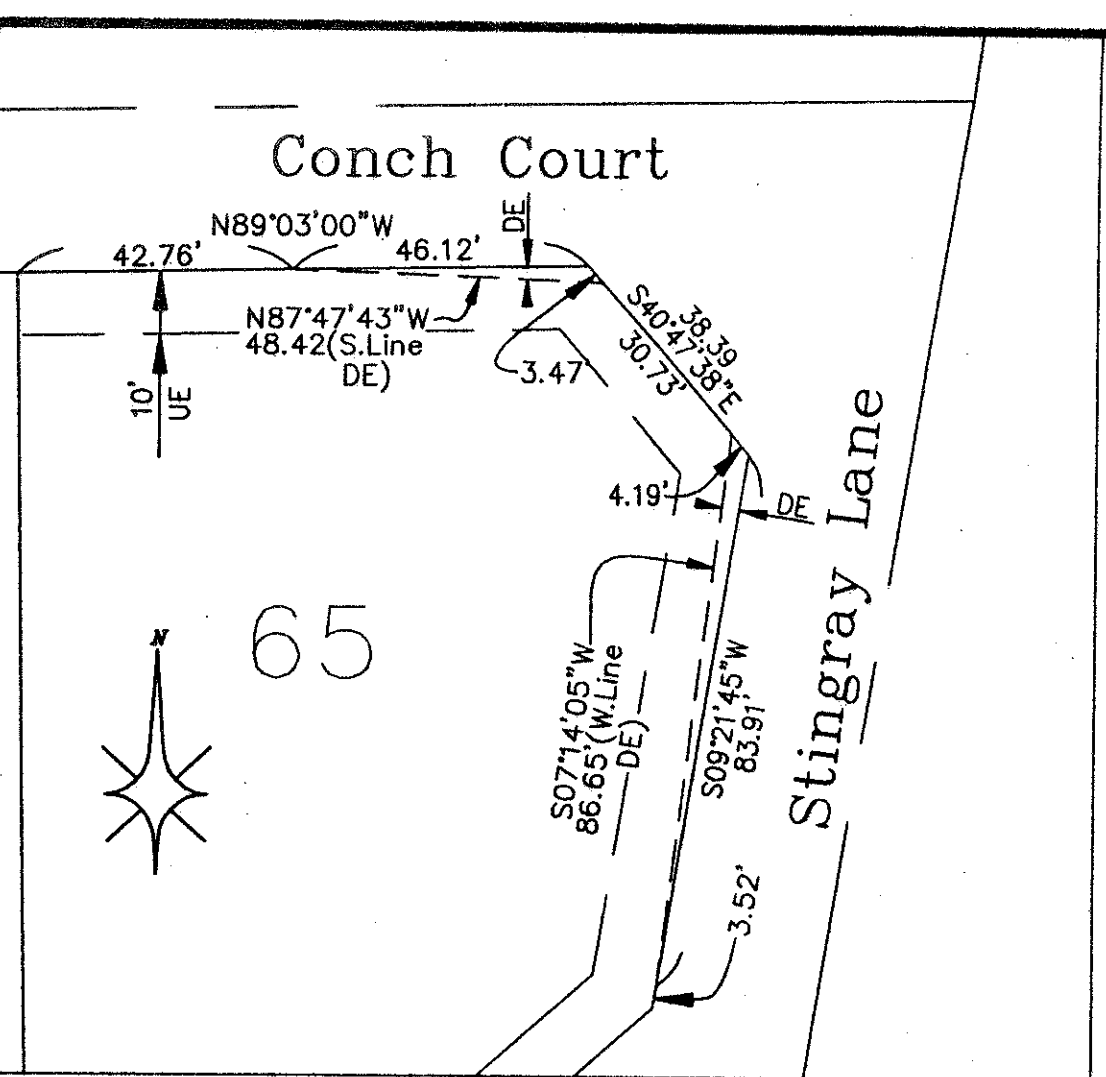
Situate in Sections 21 and 22, Township 45 South, Range 42 East  
 Being a replat of all of Tracts 24, 25, 26, 27, 30, and a portion of Tracts 16  
 through 23, 28 and 29, 31 through 33, and 36 through 39, Block 48, and the  
 adjacent abandoned roadways, Palm Beach Farms Company Plat No. 3 as recorded  
 in Plat Book 2, Page 45 through 54, inclusive, Public Records of Palm Beach County, Florida  
 July, 1996

391-009

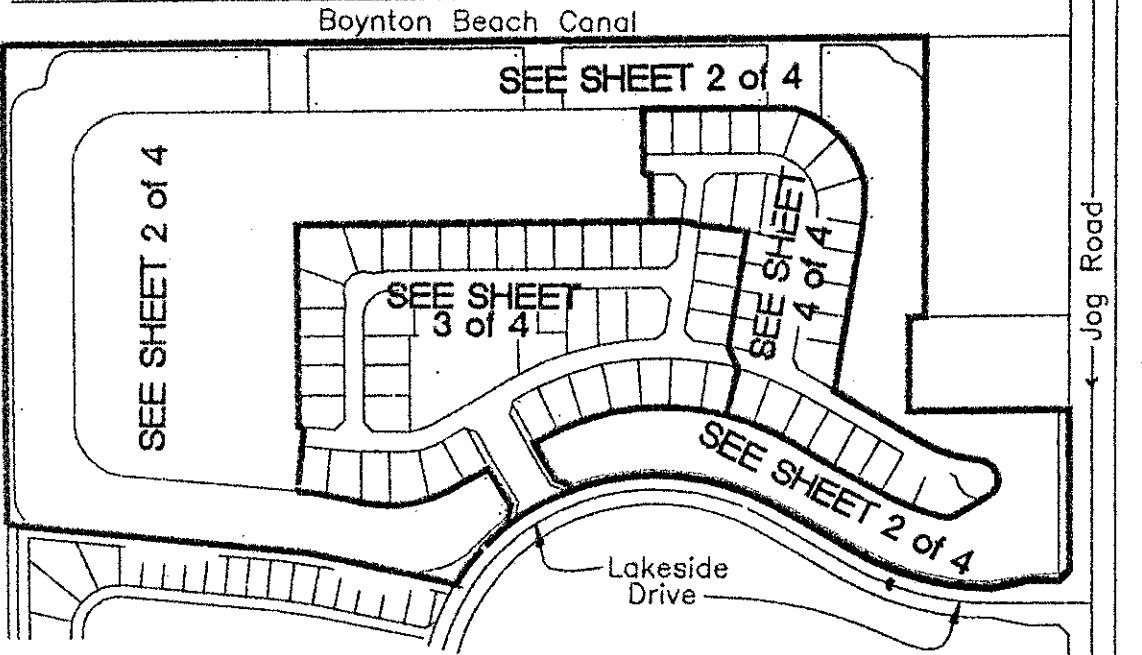
**Pet  
83-58**

**69**

STATE OF FLORIDA SS  
 COUNTY OF PALM BEACH  
 This plat filed for record at \_\_\_\_\_  
 this \_\_\_\_\_ day of \_\_\_\_\_  
 19\_\_\_\_ and duly recorded in Plat  
 Book \_\_\_\_\_ on page \_\_\_\_\_  
 DOROTHY H. WILKEN, CLERK of the  
 Circuit Court.  
 By: \_\_\_\_\_ D.C.



- Map Legend :
- = Permanent Control Point
  - ⊕ = Permanent Reference Monument
  - ⊙ = Centerline
  - Δ = Central Angle (Delta)
  - DE = Drainage Easement
  - Ft. = Feet
  - L = Arc Length
  - LAE = Limited Access Easement
  - LSB = Landscape Buffer (TRACT)
  - NR = Non-Radial
  - NTS = Not To Scale
  - RB = Radial Bearing
  - RP = Radius Point
  - PCC = Plat Book
  - PCP = Point of Compound Curvature
  - PCP = Permanent Control Point
  - Pg = Page
  - R = Radius Length
  - Typ = Typical
  - UE = Utility Easement



Sheet Index Map  
N.T.S.

**ATLANTIC - CARIBBEAN MAPPING, INC.**  
 3062 JOE ROAD GREENACRES, FLORIDA 33467  
 (561) 964-7884; FAX (561) 964-1969

Project No. 94-023    Dwg No. 023\_p003    Plat of Boynton Waters West I

SUBDIVISION Boynton Waters West I  
 BOOK 78    PAGE 69  
 FLOOD MAP # 185A  
 ZONING RT5/RS  
 QUAD # 35  
 SE 83-58  
 PUD NAME LAKES OF BOYNTON BEACH  
 TAZ - 443

Recorded  
10/30/96

**0391-009**