

BRIDGEVIEW ESTATES ON THE INTRACOASTAL

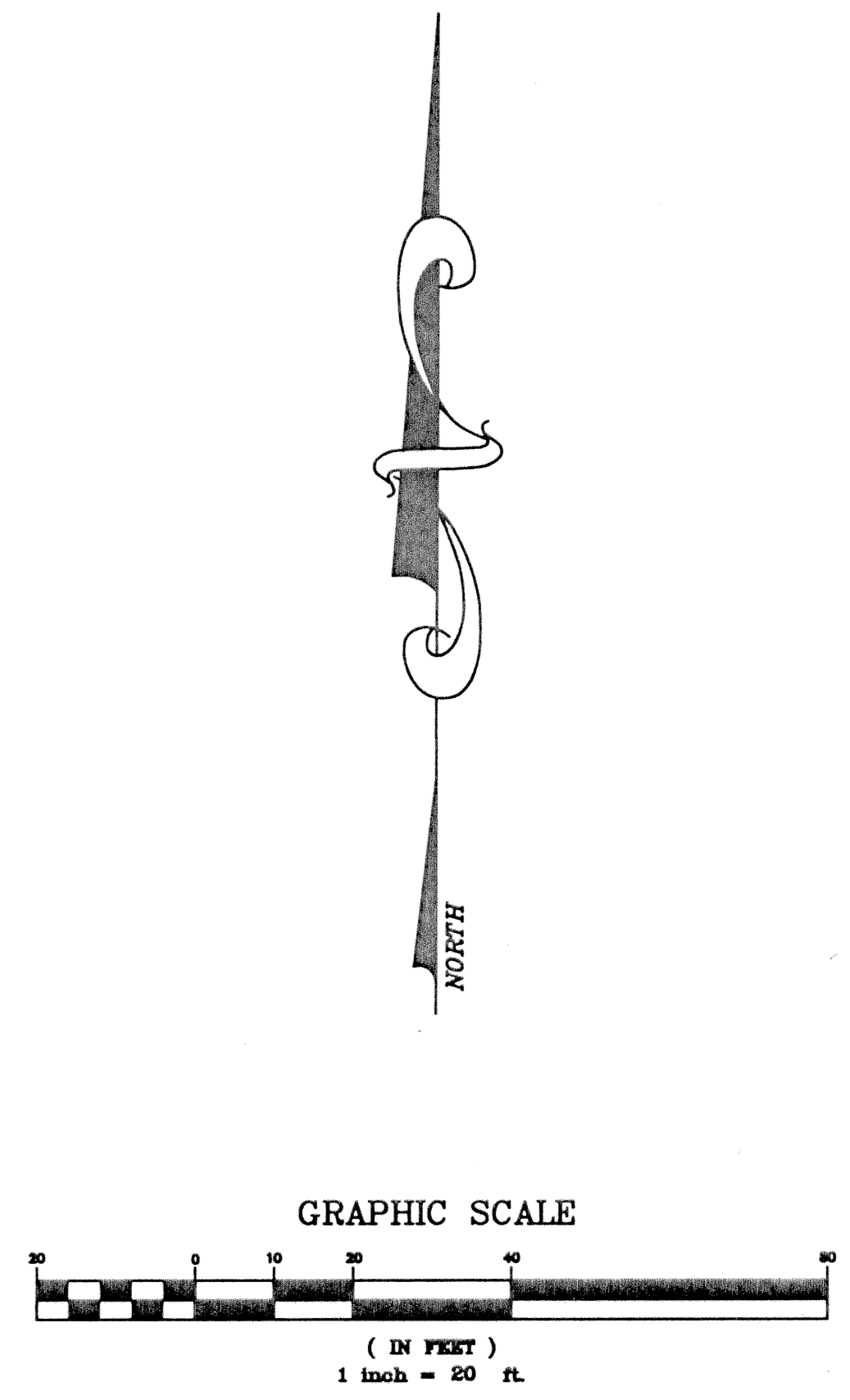
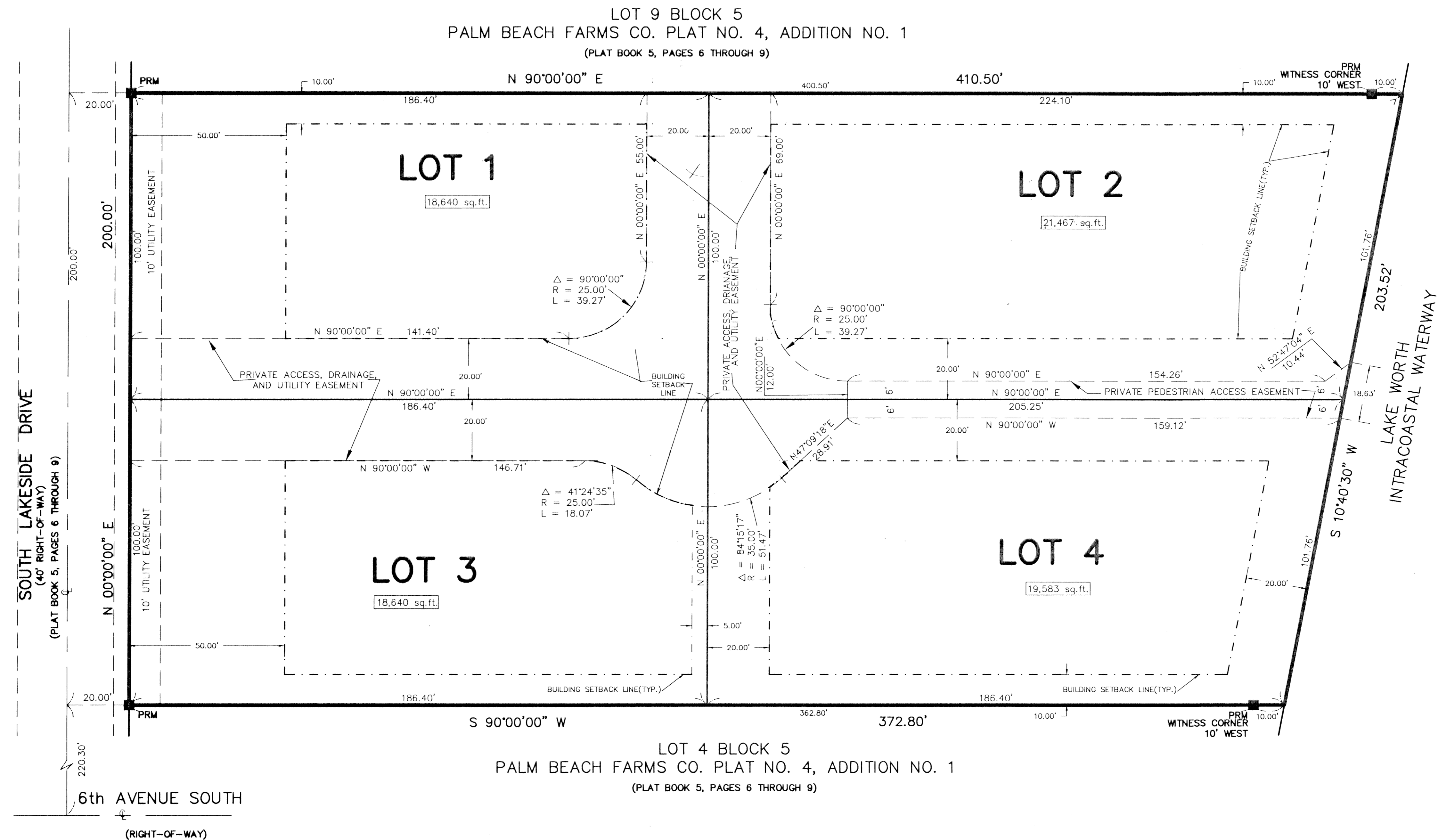
25

A REPLAT OF LOTS 5 THROUGH 8, BLOCK 5, PALM BEACH FARMS
 PLAT NO. 4, ADDITION NO. 1, AS RECORDED IN PLAT BOOK 5,
 PAGES 6 THROUGH 9 OF THE PUBLIC RECORDS OF PALM BEACH COUNTY,
 FLORIDA, LYING IN SECTION 27, TOWNSHIP 44 SOUTH,
 RANGE 43 EAST, CITY OF LAKE WORTH, PALM BEACH
 COUNTY, FLORIDA.

PREPARED BY
 DAVID P. LINDLEY
 OF
CAULFIELD and WHEELER, INC.
 PLANNERS - ENGINEERS - SURVEYORS
 7301-A WEST PALMETTO PARK ROAD, SUITE 100A
 BOCA RATON, FLORIDA 33433 - (407)392-1991
 AUGUST - 1995

STATE OF FLORIDA
 COUNTY OF PALM BEACH
 THIS PLAT WAS FILED FOR
 RECORD AT _____ M.
 THOS _____ DAY OF _____
 A.D. 1996 AND DULY RECORDED
 IN PLAT BOOK _____ ON
 PAGES _____ AND _____
 DOROTHY H. WILKEN
 CLERK CIRCUIT COURT
 BY: _____
 DEPUTY CLERK

SHEET 2 OF 2



METRIC CONVERSION
 3.2808333333 FEET EQUALS 1 METER

SUBDIVISION # _____
 BOOK 76 _____
 PAGE 85 _____
 FLOOD MAP # _____
 ZONING _____
 QUAD # _____
 ZIP CODE _____
 CITY NAME _____
 TAZ - 383