

A PORTION OF
THE SHORES AT BOCA RATON PHASES II, III AND IV PUD
 A REPLAT OF LOTS 83 thru 101 AND TRACT T OF THE SHORES AT BOCA RATON PHASE II
 PUD AS RECORDED IN PLAT BOOK 73, PAGES 119 thru 123 OF THE PUBLIC RECORDS OF PALM BEACH COUNTY,
 FLORIDA AND A REPLAT OF LOTS 33 thru 71, LOTS 116 thru 143, TRACTS C-1 AND D-1 AND
 A PORTION OF TRACTS B-1 AND X OF THE SHORES AT BOCA RATON PHASES III AND IV PUD AS RECORDED
 IN PLAT BOOK 74, PAGES 40 thru 45 OF THE PUBLIC RECORDS OF PALM BEACH COUNTY, FLORIDA

JOHN A. GRANT, JR., INC.

CONSULTING ENGINEERS AND LAND SURVEYORS

BOCA RATON, FLORIDA

DEDICATION

OCTOBER 1995

SHEET 1 OF 6

INDEX OF SHEETS

SHEET NO. 1 - 3 TITLE SHEET AND CERTIFICATES
 SHEET NO. 4 - 6 DETAIL SHEET

KNOW ALL MEN BY THESE PRESENTS THAT KENCO COMMUNITIES AT LAKES OF BOCA, INC., A FLORIDA CORPORATION AND THE SHORES AT BOCA RATON HOMEOWNERS' ASSOCIATION, INC., A FLORIDA CORPORATION NOT-FOR-PROFIT, OWNERS OF THE LAND SHOWN HEREON, BEING IN THE SOUTHEAST ONE-QUARTER OF SECTION 2, TOWNSHIP 47 SOUTH, RANGE 41 EAST, PALM BEACH COUNTY, FLORIDA, AS SHOWN HERE ON AS A PORTION OF THE SHORES AT BOCA RATON PHASES II, III AND IV PUD, A REPLAT OF LOTS 83 THRU 101 AND TRACT T OF THE SHORES AT BOCA RATON PHASE II PUD AS RECORDED IN PLAT BOOK 73, PAGES 119 THRU 123 OF THE PUBLIC RECORDS OF PALM BEACH COUNTY, FLORIDA AND A REPLAT OF LOTS 33 THRU 71, LOTS 116 THRU 143, TRACTS C-1 AND D-1 AND A PORTION OF TRACTS B-1 AND X OF THE SHORES AT BOCA RATON PHASES III AND IV PUD AS RECORDED IN PLAT BOOK 74, PAGES 40 THRU 45 OF THE PUBLIC RECORDS OF PALM BEACH COUNTY, FLORIDA, BEING MORE PARTICULARLY DESCRIBED AS FOLLOWS:

ALL OF LOTS 83, 84, 85, 86, 87, 88, 89, 90, 91, 92, 93, 94, 95, 96, 97, 98, 99, 100 AND 101 AND ALL OF TRACT T OF THE SHORES AT BOCA RATON PHASE II PUD AS RECORDED IN PLAT BOOK 73, PAGES 119-123 OF THE PUBLIC RECORDS OF PALM BEACH COUNTY, FLORIDA.

TOGETHER WITH:

ALL OF LOTS 33, 34, 35, 36, 37, 38, 39, 40, 41, 42, 43, 44, 45, 46, 47, 48, 49, 50, 51, 52, 53, 54, 55, 56, 57, 58, 59, 60, 61, 62, 63, 64, 65, 66, 67, 68, 69, 70, 71, 116, 117, 118, 119, 120, 121, 122, 123, 124, 125, 126, 127, 128, 129, 130, 131, 132, 133, 134, 135, 136, 137, 138, 139, 140, 141, 142 AND 143 AND ALL OF TRACTS C-1 AND D-1 OF THE SHORES AT BOCA RATON PHASES III AND IV PUD AS RECORDED IN PLAT BOOK 74, PAGES 40-45 OF THE PUBLIC RECORDS OF PALM BEACH COUNTY, FLORIDA.

TOGETHER WITH:

A PORTION OF TRACT B-1 OF THE SHORES AT BOCA RATON PHASES III AND IV PUD AS RECORDED IN PLAT BOOK 74, PAGES 40-45 OF THE PUBLIC RECORDS OF PALM BEACH COUNTY, FLORIDA, BEING MORE PARTICULARLY DESCRIBED AS FOLLOWS:

COMMENCING AT THE SOUTHEAST CORNER OF SECTION 2, TOWNSHIP 47 SOUTH, RANGE 41 EAST;

THENCE WITH A BEARING OF S. 89° 51' 16" W., ALONG THE SOUTH SECTION LINE OF SAID SECTION 2, A DISTANCE OF 2470.65 FEET TO A POINT;

THENCE WITH A BEARING OF N. 05° 45' 57" W., ALONG THE EAST LINE OF TRACT X OF SAID THE SHORES AT BOCA RATON PHASES III AND IV PUD, A DISTANCE OF 65.31 FEET TO THE POINT OF BEGINNING;

THENCE CONTINUE WITH A BEARING OF N. 05° 45' 57" W., ALONG THE WEST LINE OF SAID TRACT B-1, A DISTANCE OF 1345.24 FEET TO A POINT;

THENCE WITH A BEARING OF N. 89° 45' 15" E., A DISTANCE OF 20.09 FEET TO A POINT;

THENCE WITH A BEARING OF S. 05° 45' 57" E., ALONG THE EAST LINE OF SAID TRACT B-1, A DISTANCE OF 1345.28 FEET TO A POINT;

THENCE WITH A BEARING OF S. 89° 51' 16" W., A DISTANCE OF 20.10 FEET, MORE OR LESS, TO THE POINT OF BEGINNING;

ALSO TOGETHER WITH:

A PORTION OF TRACT X OF THE SHORES AT BOCA RATON PHASES III AND IV PUD AS RECORDED IN PLAT BOOK 74, PAGES 40 THRU 45 OF THE PUBLIC RECORDS OF PALM BEACH COUNTY, FLORIDA, BEING MORE PARTICULARLY DESCRIBED AS FOLLOWS:

COMMENCING AT THE SOUTHEAST CORNER OF SECTION 2, TOWNSHIP 47 SOUTH, RANGE 41 EAST;

THENCE WITH A BEARING OF S. 89° 51' 16" W., ALONG THE SOUTH SECTION LINE OF SAID SECTION 2, A DISTANCE OF 2470.65 FEET TO A POINT;

THENCE WITH A BEARING OF N. 05° 45' 57" W., ALONG THE EAST LINE OF SAID TRACT X, A DISTANCE OF 40.19 FEET TO THE POINT OF BEGINNING;

THENCE WITH A BEARING OF S. 89° 51' 16" W., A DISTANCE OF 163.62 FEET TO A POINT;

THENCE WITH A BEARING OF N. 01° 26' 48" W., ALONG THE WEST LINE OF SAID TRACT X, A DISTANCE OF 1364.03 FEET TO A POINT;

THENCE WITH A BEARING OF N. 89° 45' 15" E., A DISTANCE OF 60.39 FEET TO A POINT;

THENCE WITH A BEARING OF S. 05° 45' 57" E., ALONG THE EAST LINE OF TRACT X, A DISTANCE OF 1370.36 FEET, MORE OR LESS, TO THE POINT OF BEGINNING;

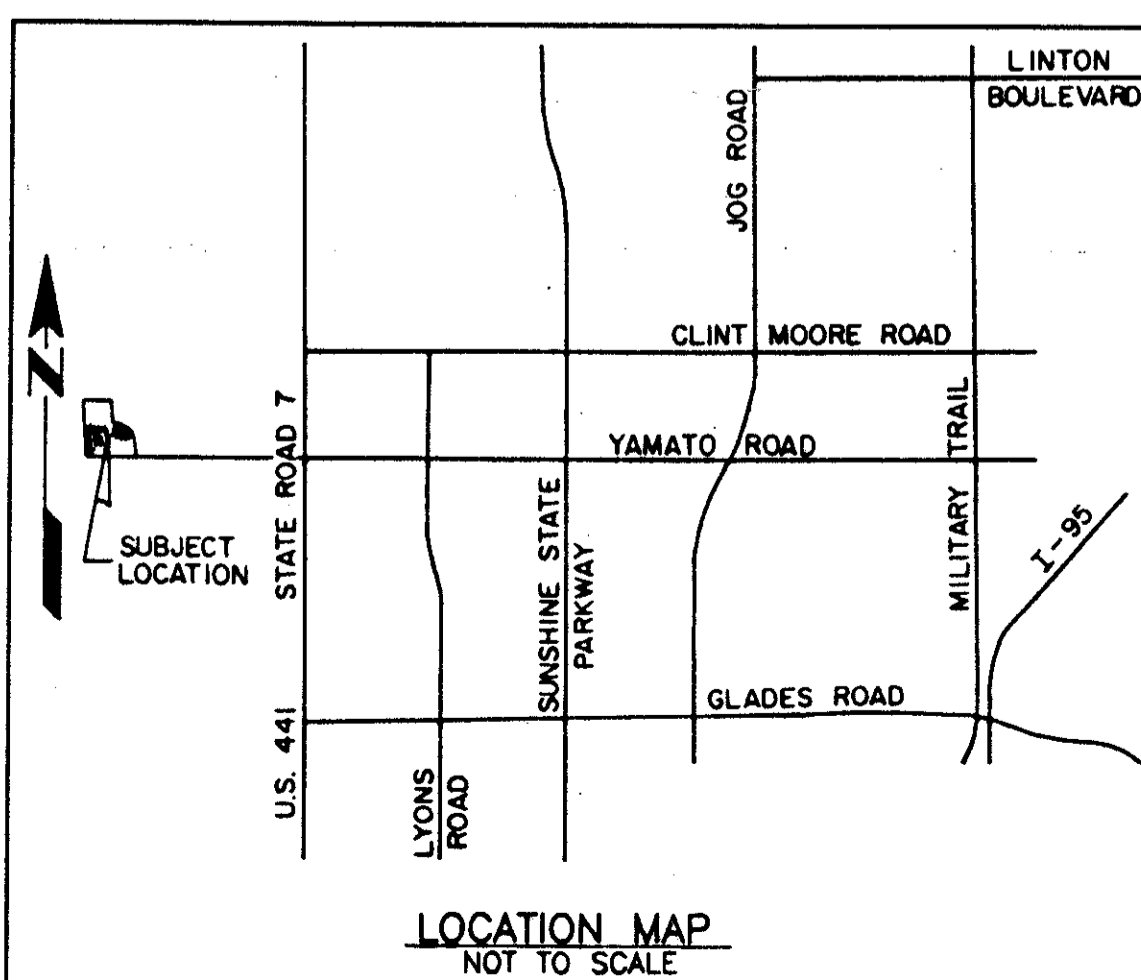
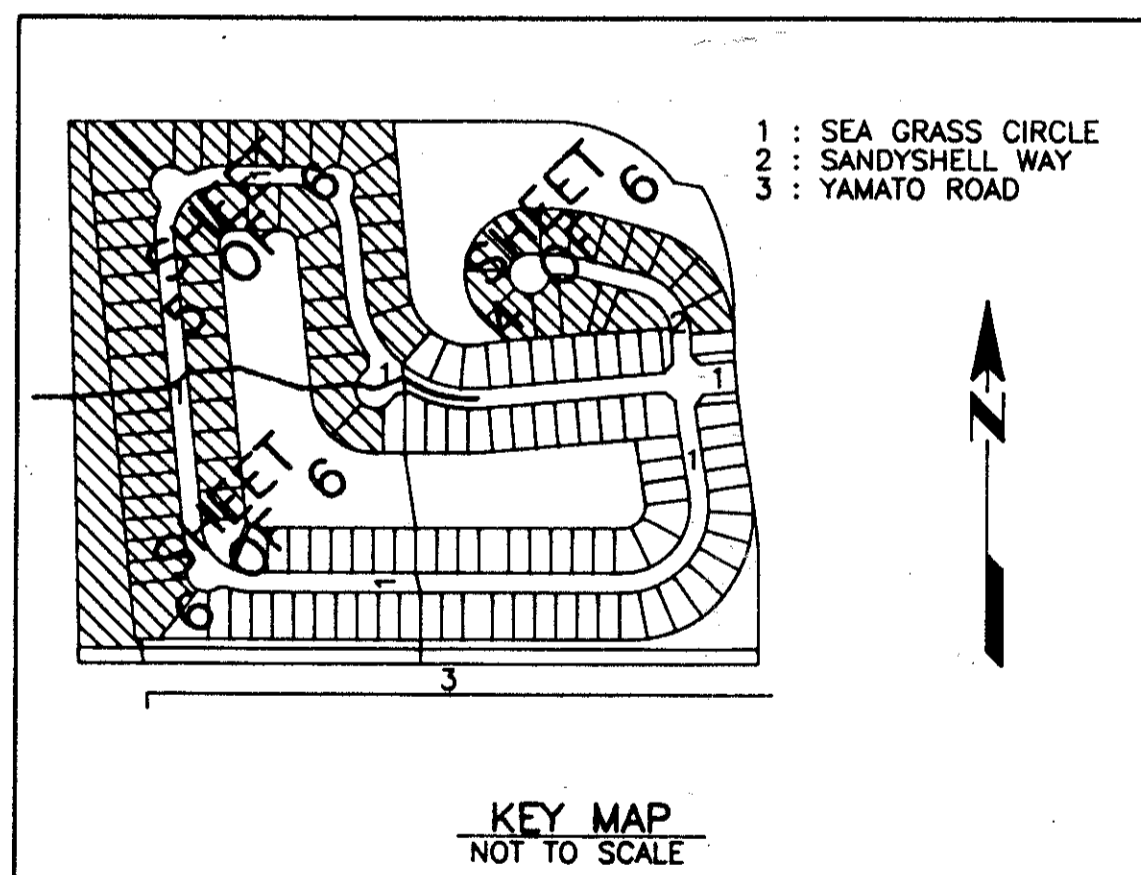
DEDICATION TO BE CONTINUED ON SHEET 2 OF 6

THIS INSTRUMENT WAS PREPARED BY:
 JOHN A. GRANT, JR.
 JOHN A. GRANT, JR., INC.
 CONSULTING ENGINEERS AND LAND SURVEYORS
 3333 NORTH FEDERAL HIGHWAY
 BOCA RATON, FLORIDA 33431
 PHONE NUMBER: (407) 395-3333

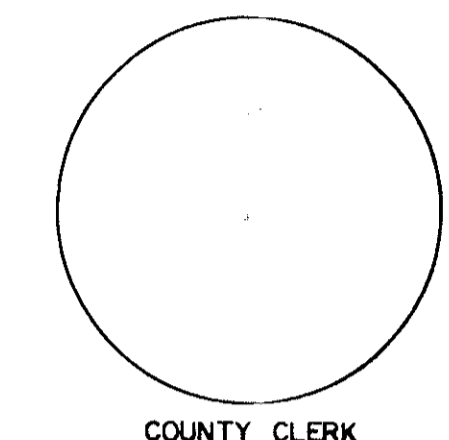
THERE MAY BE ADDITIONAL RESTRICTIONS THAT ARE NOT RECORDED ON THIS PLAT THAT MAY BE FOUND IN THE PUBLIC RECORDS OF THIS COUNTY.

STATISTICAL DATA

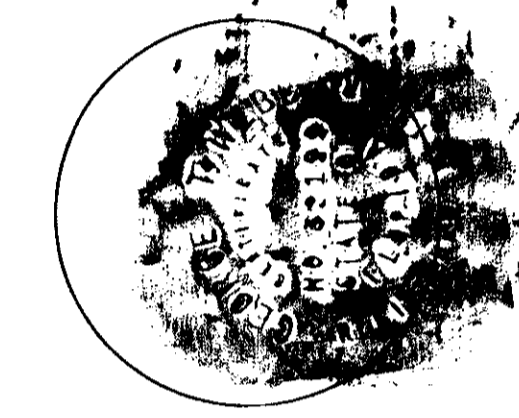
TOTAL AREA THIS PLAT	18.943 AC.
TOTAL AREA OF LOTS	15.803 AC.
AREA OF OPEN TRACT (TRACTS F-R, G-R, H-R AND X-R)	3.140 AC.
TOTAL NUMBER UNITS PROPOSED	66 UNITS
DENSITY PROPOSED	3.48 UNITS/AC.
LAND USE : SINGLE FAMILY AND ZERO LOT	



COUNTY OF PALM BEACH)
 STATE OF FLORIDA)
 This Plat was filed for record at 1:43 P.M.
 this 27 day of AUGUST 1995
 and duly recorded in Plat Book No. 77
 on page 183-188
 DOROTHY H. WILSON, Clerk of Circuit Court
 by *[Signature]*



COUNTY CLERK



COUNTY ENGINEER

COUNTY ENGINEER

THIS PLAT IS HEREBY APPROVED FOR RECORD PURSUANT TO PALM BEACH COUNTY ORDINANCE 95-33, AND IN ACCORDANCE WITH SEC. 177.071(2), F.S., THIS 27 DAY OF Aug, 1995.

BY: *[Signature]*
 GEORGE A. WEBB, P.E., COUNTY ENGINEER

SUBDIVISION - The Shores At Boca Raton
 BOOK 77 B
 FLOOD ZONE
 FLOOD MAP # 100 B
 QUAD # 68
 ZONING PUD
 SE 72-56
 PUD NAME THE SHORES AT BOCA RATON
 ZIP CODE 33499
 TAZ - 881

5/20/96