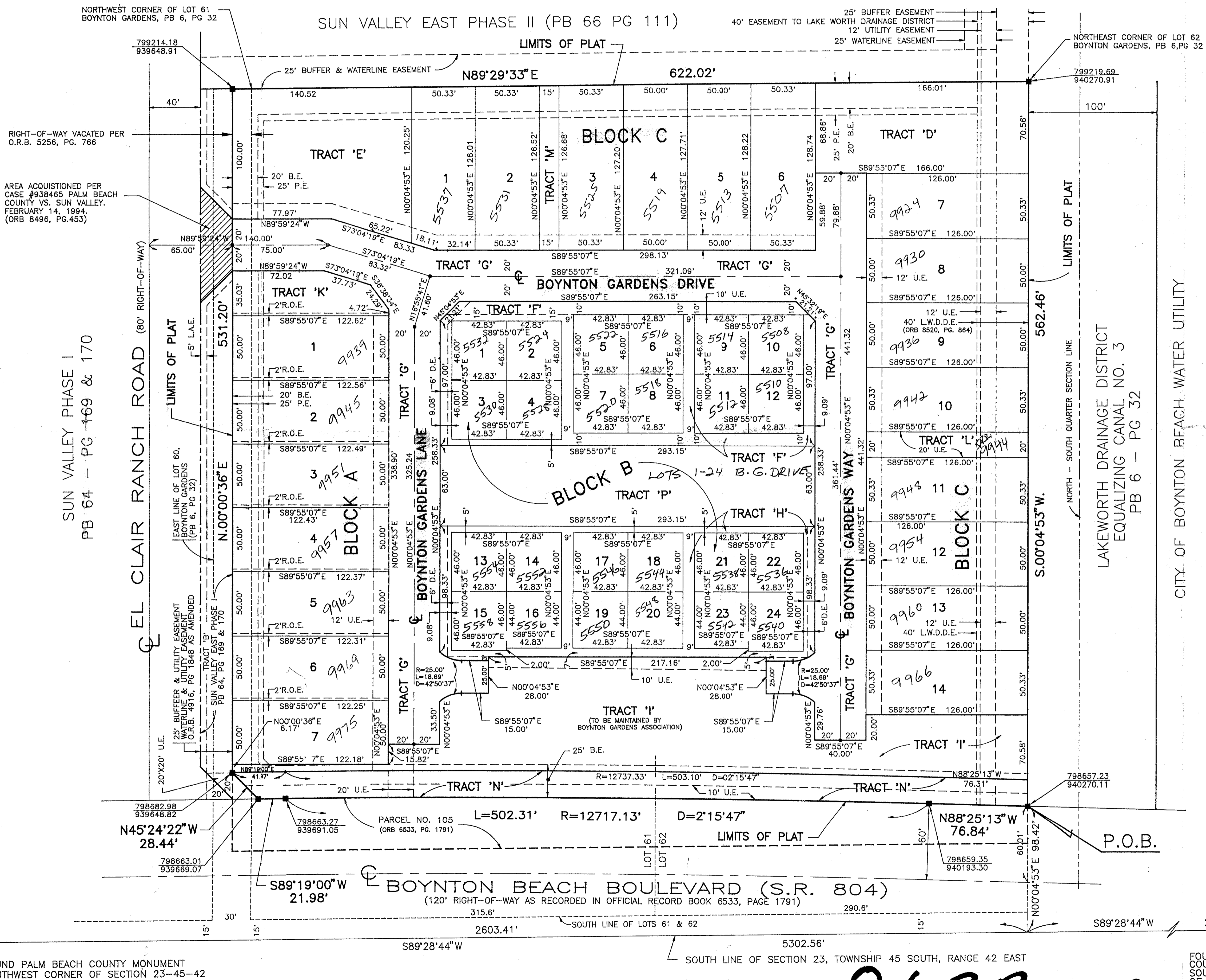


# BOYNTON GARDENS REPLAT - P.U.D.

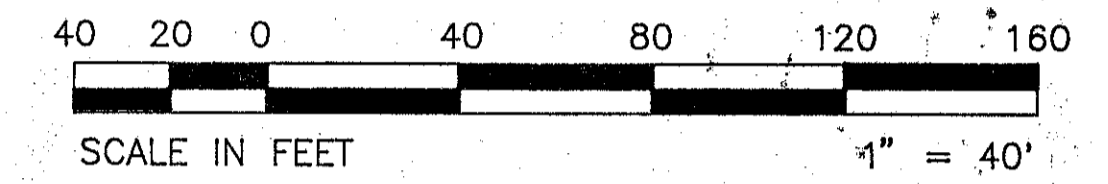
BEING A REPLAT OF A PORTION OF LOTS 61 & 62 ACCORDING TO THE PLAT OF BOYNTON GARDENS AS RECORDED IN PLAT BOOK 6, PAGE 32, PUBLIC RECORDS OF PALM BEACH COUNTY, FLORIDA.  
 LYING IN SECTION 23, TOWNSHIP 45 SOUTH, RANGE 42 EAST, PALM BEACH COUNTY, FLORIDA  
 SHEET 2 OF 2

0637-001

182



PET. 92-11  
 CURRENT  
 5/2/2/I



- ### LEGEND
- Δ = DELTA
  - R = RADIUS
  - L = LENGTH OF CURVE
  - = PERMANENT CONTROL POINT
  - = SET PERMANENT REFERENCE MONUMENT LB# 4873
  - D.E. = DRAINAGE EASEMENT
  - B.E. = BUFFER EASEMENT
  - P.E. = PRESERVE EASEMENT
  - R.O.E. = ROOF OVERHANG EASEMENT
  - P.O.C. = POINT OF COMMENCEMENT
  - P.O.B. = POINT OF BEGINNING
  - L.W.D.D.E. = LAKE WORTH DRAINAGE DISTRICT EASEMENT
  - L.A.E. = LIMITED ACCESS EASEMENT
  - EASE. = EASEMENT
  - O.R.B. = OFFICIAL RECORD BOOK
  - PB = PLAT BOOK
  - PG = PAGE

- ### SURVEYOR'S NOTES:
1. NO BUILDING OR ANY KIND OF CONSTRUCTION OR TREES SHALL BE PLACE ON ANY EASEMENT WITHOUT PRIOR APPROVAL OF ALL EASEMENT BENEFICIARIES AND ALL APPLICABLE COUNTY APPROVALS OR PERMITS AS REQUIRED FOR SUCH ENCROACHMENTS.
  2. IN THOSE CASES WHERE UTILITY, WATER, SEWER AND DRAINAGE EASEMENTS CROSS, DRAINAGE EASEMENTS SHALL HAVE PRIORITY.
  3. BUILDING SETBACK LINES SHALL BE AS REQUIRED BY PALM BEACH COUNTY ZONING REGULATIONS.
  4. BEARINGS ARE BASED ON A GRID (NAD 83, 1990 ADJUSTMENT) BEARING OF S89°28'44"W, ALONG THE SOUTH LINE OF SECTION 32, TOWNSHIP 45 SOUTH, RANGE 42 EAST. ALL DISTANCES ARE GROUND.

PET. 92-11  
 GOLDSTEIN PUD

0637-001

77/182

SUBDIVISION - Boynton Gardens  
 BOOK 77 PAGE 181  
 FLOOD ZONE B  
 QUAD # 35  
 ZONING RM  
 ZIP CODE 33437  
 PUD NAME Boynton Gardens

FOUND PALM BEACH COUNTY MONUMENT  
 SOUTHWEST CORNER OF SECTION 23-45-42

FOUND PALM BEACH COUNTY MONUMENT  
 SOUTHEAST CORNER OF SECTION 23-45-42