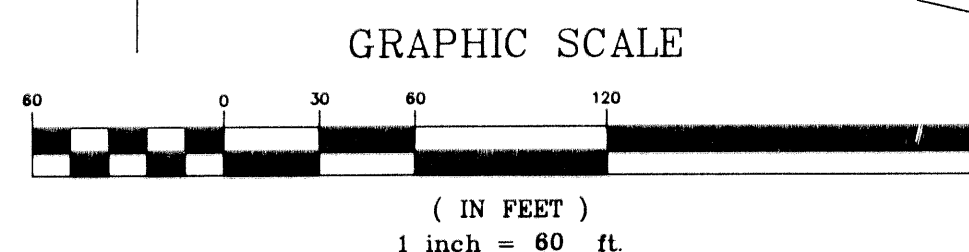
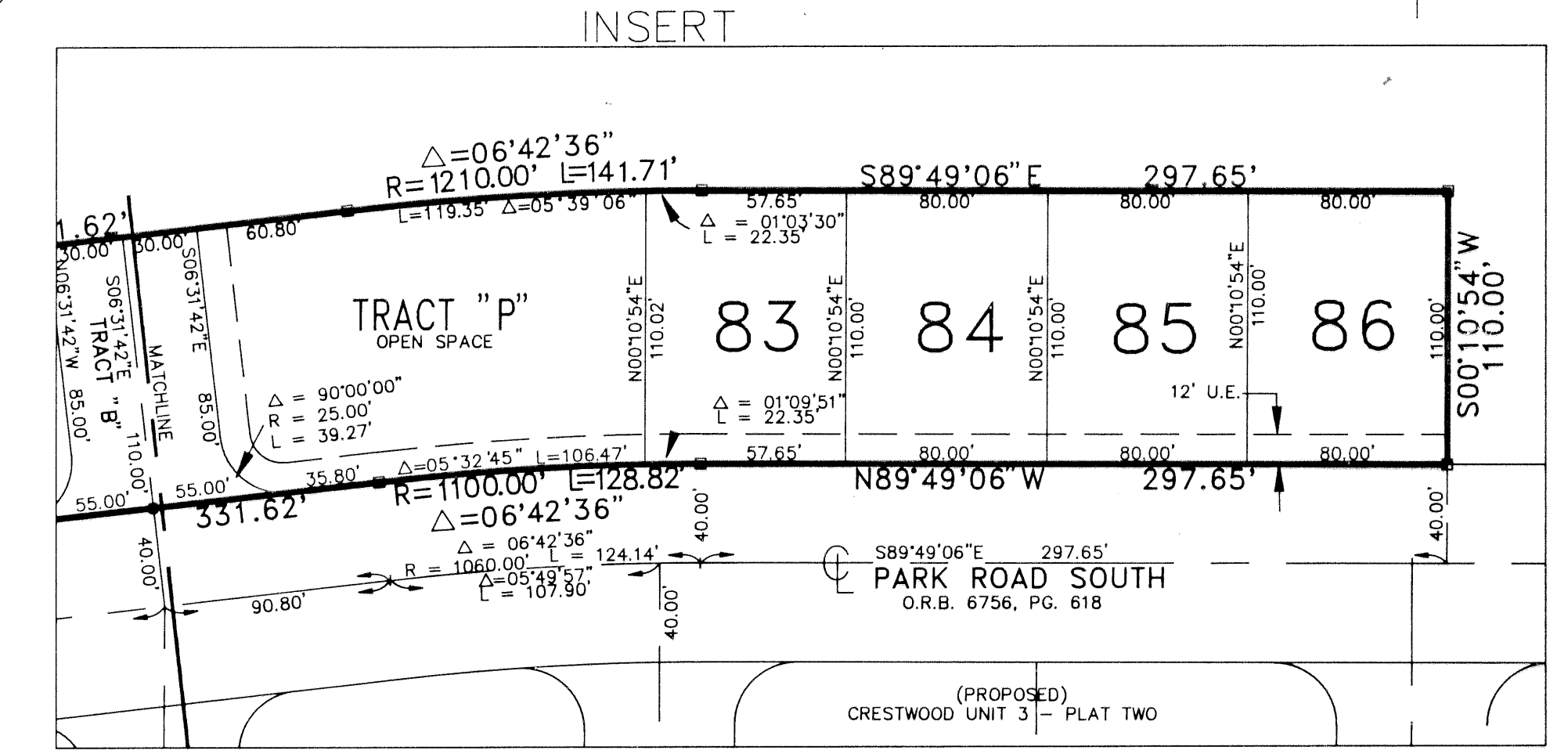
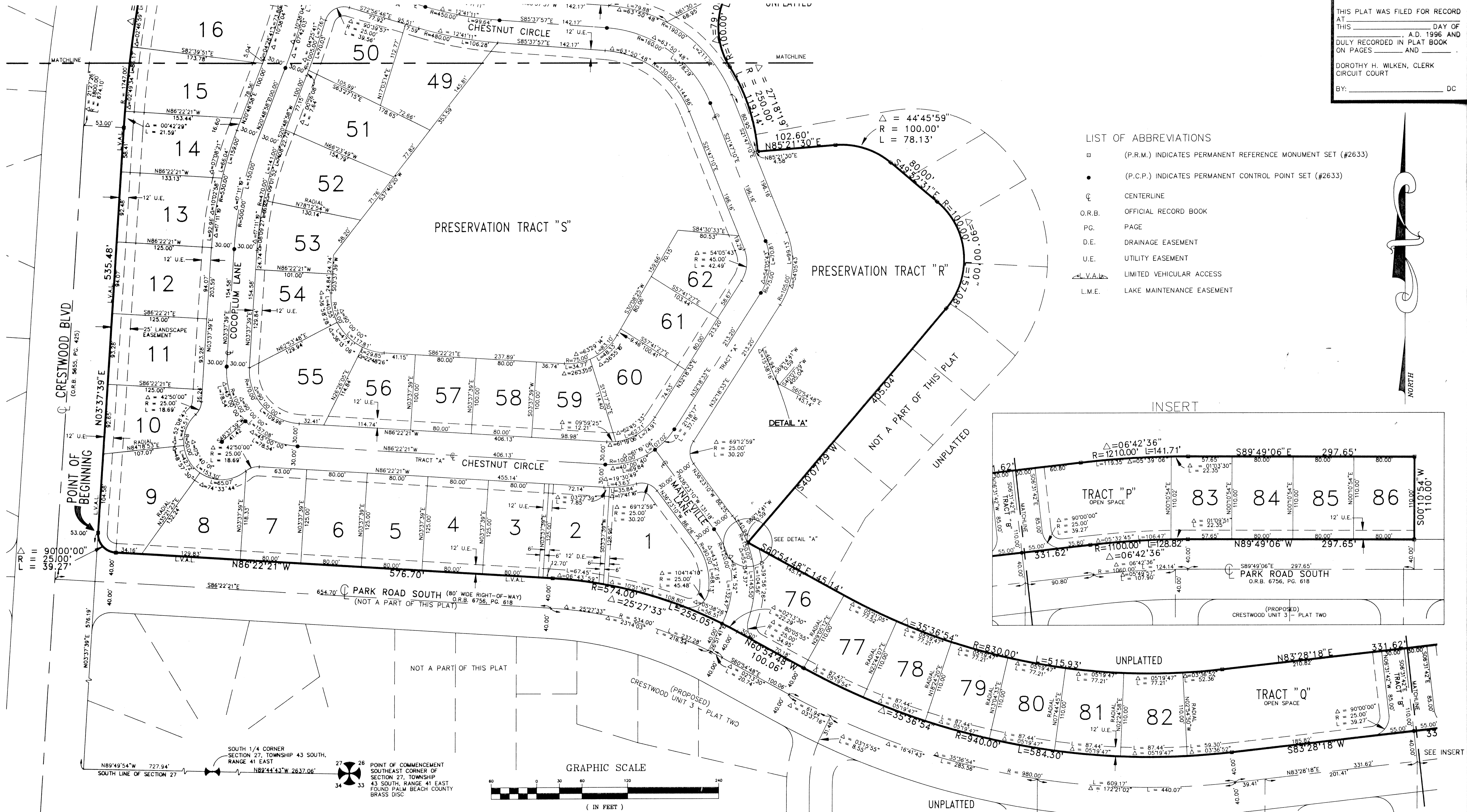


CRESTWOOD UNIT 3 - PLAT THREE
SITUATE IN SECTION 27, TOWNSHIP 43 SOUTH, RANGE 41 EAST
VILLAGE OF ROYAL PALM BEACH, PALM BEACH COUNTY, FLORIDA
NOVEMBER 1995

STATE OF FLORIDA } SS
COUNTY OF PALM BEACH }
THIS PLAT WAS FILED FOR RECORD
AT _____ DAY OF _____
A.D. 1995 AND
DULY RECORDED IN PLAT BOOK
ON PAGES _____ AND _____
DOROTHY H. WILKEN, CLERK
CIRCUIT COURT
BY: _____ DC

LIST OF ABBREVIATIONS

- (P.R.M.) INDICATES PERMANENT REFERENCE MONUMENT SET (#2633)
- (P.C.P.) INDICATES PERMANENT CONTROL POINT SET (#2633)
- ⊙ CENTERLINE
- O.R.B. OFFICIAL RECORD BOOK
- PG. PAGE
- D.E. DRAINAGE EASEMENT
- U.E. UTILITY EASEMENT
- L.V.A. LIMITED VEHICULAR ACCESS
- L.M.E. LAKE MAINTENANCE EASEMENT



SUBDIVISION # CRESTWOOD
 BOOK 77 PAGE 173
 FLOOD MAP *
 ZONING
 SE
 PUD NAME VILLAGE OF ROYAL PALM BEACH
 TAZ - 884

Shalloway, Foy,
Rayman & Newell, Inc.
ENGINEERS - PLANNERS - SURVEYORS
1201 BELVEDERE ROAD, WEST PALM BEACH, FLORIDA 33405, (407) 655-1151

Date 06/27/1995
Designed _____
Drawn C.A.R.
Checked G. RAYMAN
Project Manager _____
SHEET 3/3
JOB NO. 91084C.02