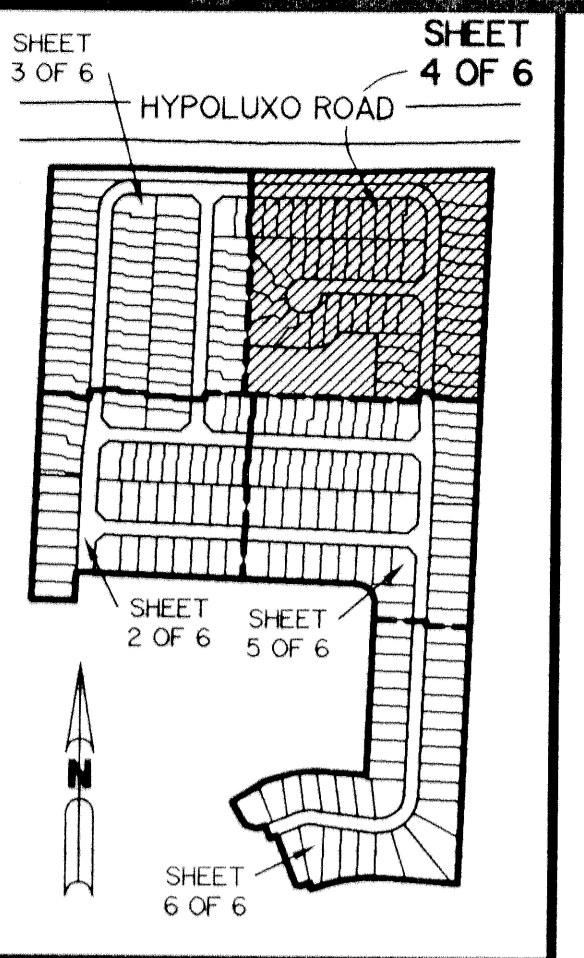


A PLANNED UNIT DEVELOPMENT

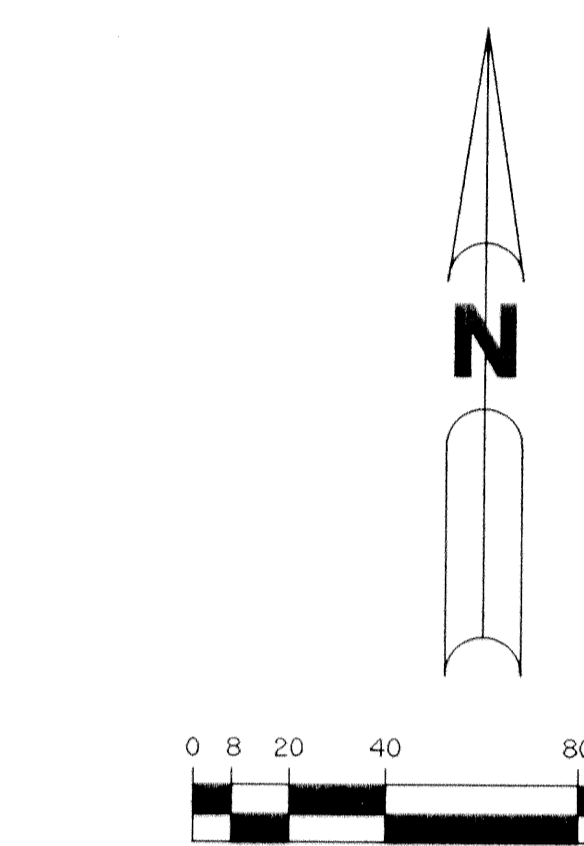
NAUTICA SOUND P.U.D. - PLAT TWO

A PARCEL OF LAND LYING IN SECTION 7,
TOWNSHIP 45 SOUTH, RANGE 43 EAST, CITY OF BOYNTON BEACH,
PALM BEACH COUNTY, FLORIDA.

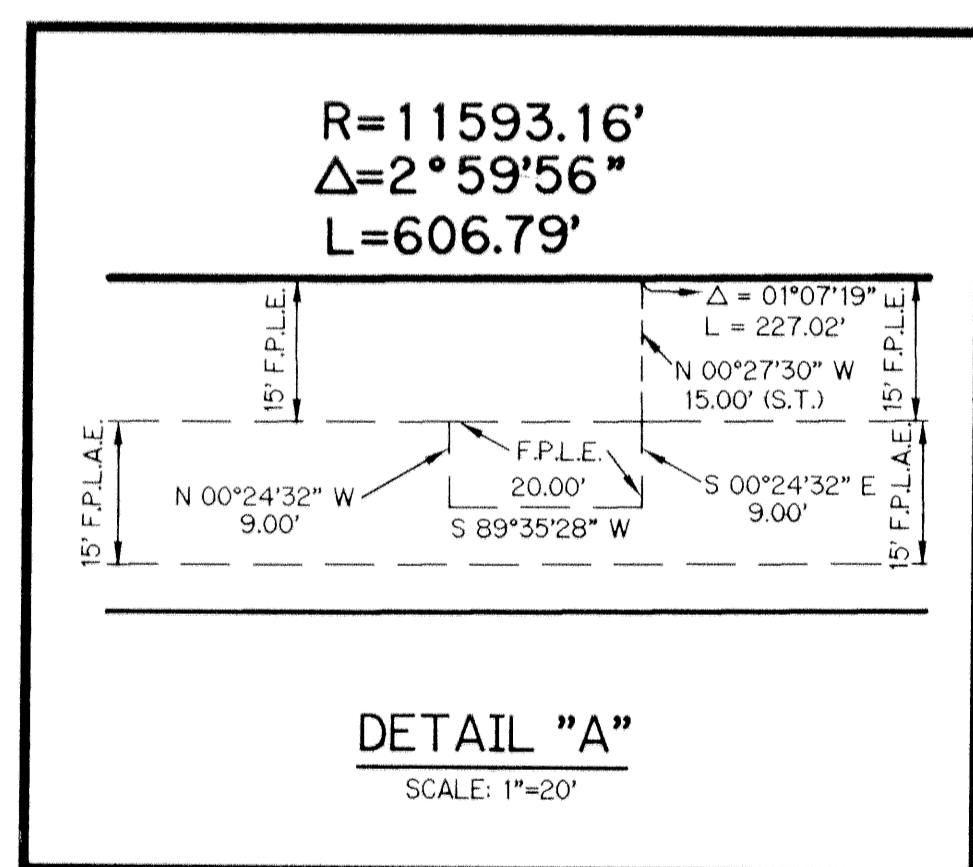
SHEET 4 OF 6 JANUARY, 1996



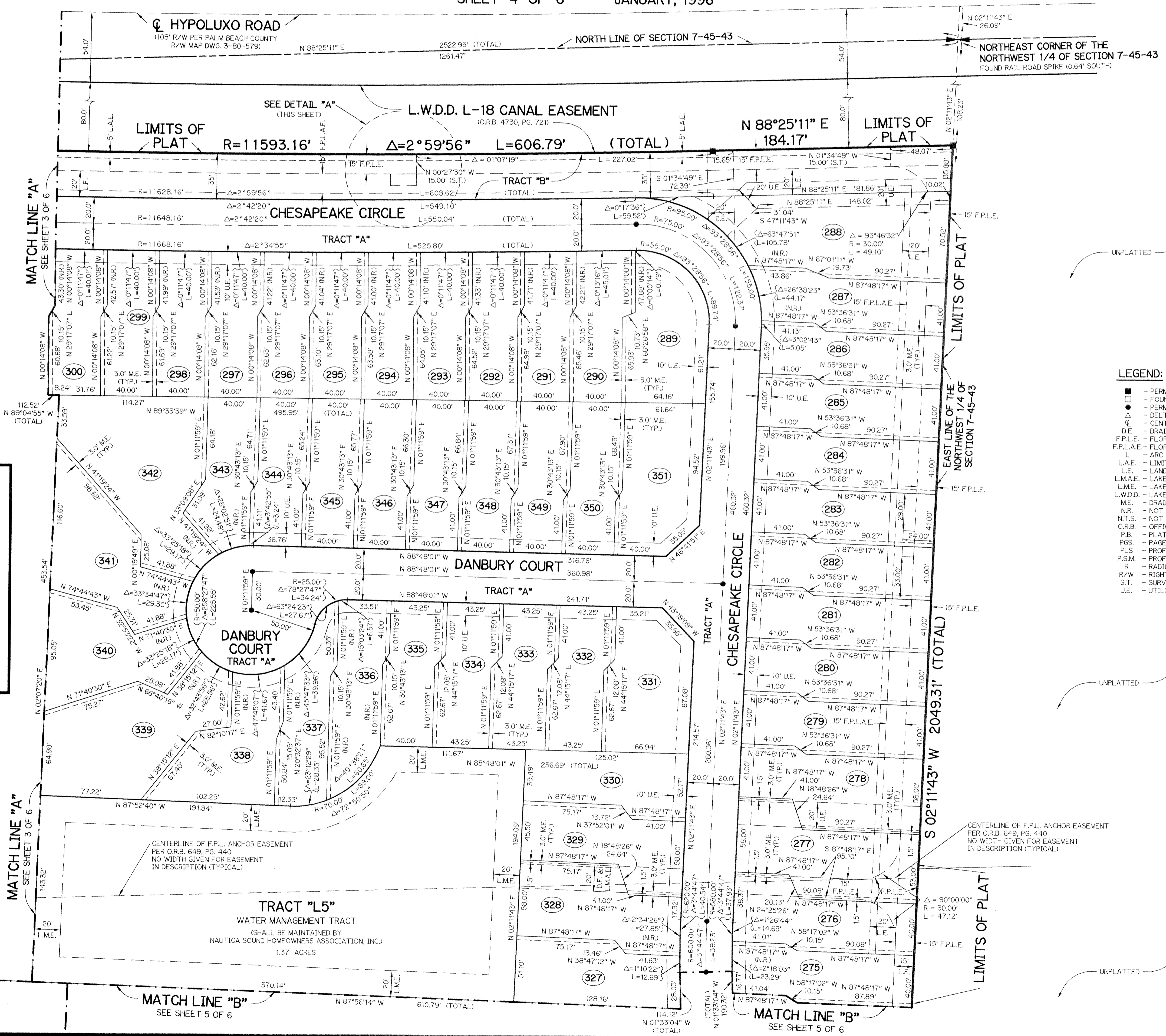
KEY MAP
N.T.S.



SCALE: 1" = 40'



DETAIL "A"
SCALE: 1"=20'



LEGEND:

- - PERMANENT REFERENCE MONUMENT, PLS #4190
- - FOUND PERMANENT REFERENCE MONUMENT, PLS #4190
- - PERMANENT CONTROL POINT, PLS #4190
- △ - DELTA ANGLE
- ⊙ - CENTERLINE
- D.E. - DRAINAGE EASEMENT
- F.P.L.E. - FLORIDA POWER & LIGHT EASEMENT
- F.P.L.A.E. - FLORIDA POWER & LIGHT AERIAL EASEMENT
- L - ARC LENGTH
- L.A.E. - LIMITED ACCESS EASEMENT
- L.E. - LANDSCAPE EASEMENT
- L.M.A.E. - LAKE MAINTENANCE ACCESS EASEMENT
- L.M.E. - LAKE MAINTENANCE EASEMENT
- L.W.D.D. - LAKE WORTH DRAINAGE DISTRICT
- M.E. - DRAINAGE, MAINTENANCE AND OVERHANG EASEMENT
- N.R. - NOT RADIAL
- N.T.S. - NOT TO SCALE
- O.R.B. - OFFICIAL RECORD BOOK
- P.B. - PLAT BOOK
- P.S. - PAGES
- P.L.S. - PROFESSIONAL LAND SURVEYOR
- P.S.M. - PROFESSIONAL SURVEYOR AND MAPPER
- R - RADIUS
- R/W - RIGHT-OF-WAY
- S.T. - SURVEY TIE
- U.E. - UTILITY EASEMENT

THIS INSTRUMENT PREPARED BY
WILBUR F. DIVINE, P.S.M. 4190, STATE OF FLORIDA
LAWSON, NOBLE AND WEBB, INC.
ENGINEERS PLANNERS SURVEYORS
WEST PALM BEACH, FLORIDA